

PHILLY MUSIC . . . . pg. 2  
 NORTH HALL . . . . pg. 3  
 BIBLE LIT . . . . . pg. 4  
 TOP PERFORMERS . pg. 5

# EAGLE EYE

LOCK HAVEN STATE COLLEGE

SPORTS . . . . . pg. 6  
 TRACK . . . . . pg. 7  
 NEW FACULTY . . pg. 8  
 RESIGNATIONS . pg. 8

4 15

## LH Offers Course, Theatre Workshop

Time spent at Lock Haven State College this summer promises to be anything but dull. Besides the regular summer school sessions and the Upward Bound project, a special activity has been initiated. This is a practical summer theatre workshop in conjunction with Millbrook Playhouse. Lock Haven is one of the few colleges to offer such a program.

According to information provided by Dr. Marcus Konick, two six-week sessions will be offered, from June 5 to July 14, and from July 17 to August 25. Each of the two sessions will carry six semester hours of credit. Costs will be the usual college rate of \$12.50 per semester hour for instate students. Lodging is available in the college dormitories for \$102 per six-week session. Meals for those working at the Playhouse will be \$111.40 per six-week session.

Because this program is being offered for the first time at Lock Haven State, enrollment has been set at twenty students. Students may enroll for either or both sessions by applying to the Director of the Division of Humanities, Dr. Marcus Konick, Raub 302 no later than June 1. The training, experience, and other qualifications will be determined by a personal interview.

The workshop will provide both classes and active participation in summer theatre performances and production. The experiences will include all areas of the theatre—direction, acting, scenery design and construction, lighting, costuming, make-up, and little theatre management and maintenance.

Both formal and informal classes will be conducted. Students will work six days a week, from 10 am to 11 pm in a broad variety of activities under the direction and instruction of Mrs.

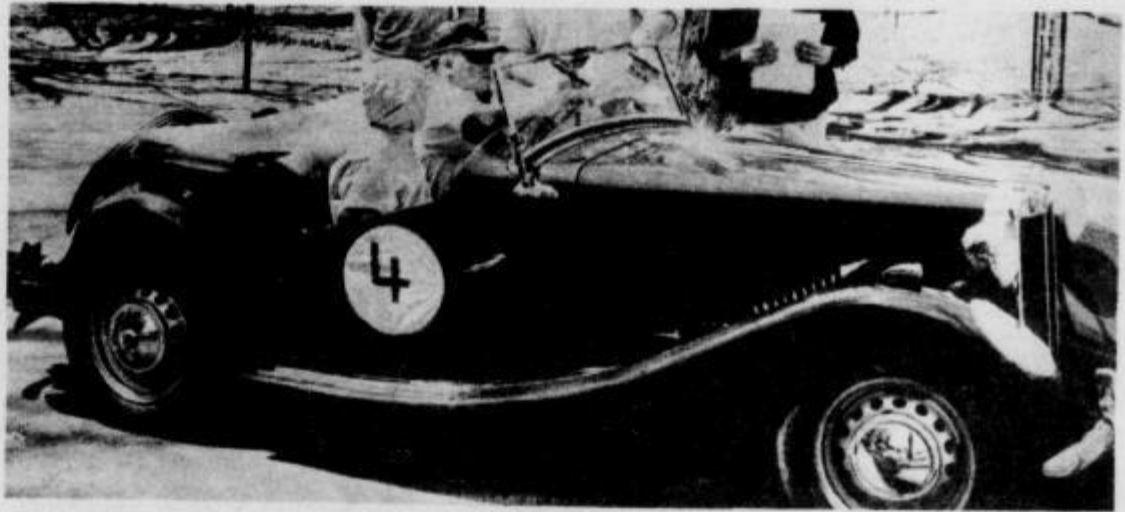
Hazel Ferguson and Mr. Nathan Garner, members of the Lock Haven State College Theatre Department. "Nate" and "Fergy", well-known on our campus, have had extensive theatrical experience and this summer will be attached to the Playhouse staff.

In addition, lectures will be presented by members of the Playhouse company and Dr. Frank Davidson, managing director, who has taught theatre at the City College of New York for 32 years and managed such summer theatres as Bottom Landing, N.Y., Oquonquit Colony Theatre, directed summer stock at Cape Playhouse in Deal, N.J., and Pocono Playhouse.

Millbrook Playhouse will open its fifth season this summer as a non-profit professional summer stock theatre. It is designed to provide entertainment for area residents and summer workshop students. It is staffed by a professional cast and operated by non-theatre residents of the area. The Playhouse is located in Mill Hall about three miles west of the Lock Haven State College campus.

The qualified students this summer will have the opportunity to take certain acting roles. Every student will be assured of appearing in at least two productions per session.

Millbrook Playhouse will present the following light production during the two college sessions: "See How They Run", June 27-July 2; "The Boy Friend", July 4-July 9; "Kind Lady", July 11-July 16; "Take Her She's Mine", July 18-July 23; "Dark of the Moon", July 25-July 30; "Never Too Late", August 1-August 6; "Philadelphia Story", August 8-August 13; and "The Glass Menagerie", August 15-August 20. A final production, "South Pacific", will be presented from August 22 through September 4.



## AXA's Annual Car Rally Highlighted by 'Gimmicks'

Lambda Chi Alpha sponsored its Second Annual Car Rally this past Sunday, and the brothers termed the event a "huge success."

The race was a gimmick rally run in 5 separate legs, covering approximately 114 miles. The drivers traveled as far as Hughesville, weaving through the back streets of Williamsport and its surrounding towns.

"Gimmicks" provided the various high-lights of the race. The entourage stopped at the Montoursville Airport to pick up Avis Rent-a-Car "We Try Harder" buttons in any of the several different languages. Also the close watch of signs and the counting of bridges provided entertainment for the racers.

The winners were Dave Brooks and Powell Markey of Lycom-

ing College, driving a Sunbeam. Second place was captured by Ed Adams and Ed Gallup in a V. W. and third place was won by Mr. and Mrs. Charles Poal of Beech Creek in an XKE.

The success of the rally, which will be a semester affair, was due largely to the long hours of work by the brothers and especially the pledges.

Herm Hager, will be rallymaster for the next event, and the brothers expressed the hope that the event will continue to be a success due to the co-operation of campus organizations, Greek or otherwise.

## Boston U. Prof Talks at Special Ed. Conference

Two hundred fifty Special Education administrators, teachers and students attended the Special Education Conference at Lock Haven State College on Saturday, April 22, 1967.

The first general session featured a talk, "The Role of the Social Worker in the Public Schools" by Miss Virginia Lang of Blair County.

Six section meetings were held. Materials for use in special ed-

ucation classes were demonstrated. Graduate students from The Pennsylvania State University reported on the National CEC Convention. The conference was sponsored by the Special Education Department at Lock Haven State College in cooperation with the Council for Exceptional Children, Area III, and Area J Curriculum Center. Lock Haven State College special education students also participated.

The luncheon speaker was Dr. Burton Blatt, Chairman of Special Education Department at Boston University. His topic, "What I Have Learned About the Disordered and Their Teacher," emphasized the need for a broad outlook for all who work with the retarded. The teacher is a key person in education intelligence, so the mentally retarded can become useful and contributing members of society.

The afternoon meeting was a presentation on the new Education Research Information Center by Dr. William Curriker, Chairman of the Special Education Department at Pennsylvania State University.

Dr. Mary Alice Smith, Director of Special Education, presided at the morning and luncheon meeting. Dr. Irene Russell, Dean of Teacher Education, presided at the afternoon meeting. Special Education students at Lock Haven State College acted as hosts and hostesses.

## LHSC Students Attend 19th Annual PSEA Convention

"Education: Our Investment in Freedom" was the theme of the Student PSEA Convention held at the Holiday Inn Town in Harrisburg on April 28-29, 1967. This convention was the 19th annual Student PSEA Convention held at the Harrisburg Holiday Inn Town. Responsible for the preparation of this convention were state officers, Student PSEA executive council, the state committee and PSEA headquarters staff.

Representing LHSC at this convention were Lee Ann Younger, Judith Abrams, Ralph Kaufman and advisor, Mrs. Willetta Jack. A variety of activities fill the schedule, which was all day Friday until Saturday, 1:30 pm.

The Governor of the commonwealth was scheduled to deliver the keynote at the opening session. During the week-end there were to be general sessions with speakers, a banquet, and a luncheon. After the general sessions delegates were to meet in study groups. Leaders in education consulted with each group and guided the groups' discussions about the realm of freedoms "to

See CONVENTION Pg. 5

## 'Cradle Song' Succeeded As 'Deeply Touching' Play

The "Cradle Song," presented April 27, 28, 29 by the College Players, was a drama of high spiritual intensity, religious in concept, and certainly a perfect example of "static drama." Almost nothing happened in any dramatic sense in the "Cradle Song," yet its conventional atmosphere was so strong, its characters clearly drawn, that it created a world of its own, tender, innocent, and deeply touching.

The College Players, directed by Dr. Robert McCormick and assisted by Frances Peter, a resident actress from New York City, and two members of the faculty, gave a fresh and interesting interpretation.

Mrs. Hazel Ray Ferguson was

the life of the show in her role as the stern and prudish vicarress.

Frances Peter, playing Sister Johanna of the Cross, gave a very touching and sensitive performance.

Cheryl Van Haelst's portrayal of the devilish and flighty Sister Marcella was excellent. Her performance added humor and warmth to the play.

Steve Waltz, one of the three male cast members, did a fine job as the romantic lover Antonio.

Ann Passuello played Teresa, the young girl reared by the Dominican Sisters. Her performances at times seemed too flighty to be those of an 18 year-old girl who was about to be married.

Dianne Kargas was a very effective characterization of Sister Inez. Her characterization in the second act was superb.

Others of the cast were Michael Vuccola as the poet; Becky Rierotti as Sister Sagrario; Shari Underkoffler as Sister Tornera; Kathy Jacobs as Sister Maria Jesus; Sandra Barber and Susan Keefer as monitors; Lawrence Lebin as the doctor; Mrs. Arlene Koons as the prioress; and Pat Swarr as the Mistress of Novices.

The performance was well played and each character was uniquely individual.

The blue-speckled setting was very handsome and yet so simple. Technical design for the play was excellent.

## It's Greek To Me!

### DELTA ZETA

Ten outstanding Delta Zeta pledges were formally initiated into the bonds of sisterhood on Sunday, April 9, at 2 pm, at the Fallon Hotel. Initiation was followed by a luncheon in Woolridge Rec. The new sisters are Sue Citty, Vickey Dove-spike, Karen Drewery, Cindy Heckman, Cheri Keen, Mary Jane Mannherz, Gigi Meyers, Marsha Packer, Lymm Spadafore, and Dixie Sidney. Karen Drewery received the outstanding pledge paddle; Marsha Packer, the scholarship award; Cindy Heckman, outstanding pledge notebook; and Sue Citty, the most pledge points.

Election of officers was recently held. Our congratulations go to president, Becky Dill; 1st vice-president, Candy Probst; 2nd vice-president, Jeanne Enrietti; corresponding secretary, Cheryl Cunningham; recording secretary, Nancy McCracken; treasurer, Gretchen Evangelists; historian, Margis Robb; and parliamentarian, Cheri Keen. The chairmen of the various committees were also appointed.

Eleven sisters and financial advisor Mrs. Ralph Kuhn attended the Delta Zeta state convention at Bedford, Penna., on April 15 and 16.

The sisters of Delta Zeta would like to thank all those who contributed to the Mike Snyder fund on Friday, April 29. The drive proved to be successful when the sisters collected \$100. Connie Eisenhower headed the drive.

Several sisters have recently been pinned: Barb Fould to Steve Remsnyder; Beckee Klar

to Mike Gram; Cheryl Cunningham to Chuck Jeswilkawski; and Vickie Doverspike to Art Kennedy. The sisters congratulate Gretchen Focht on her engagement to Rick Holland.

In the near future, the sisters of Tau Kappa Epsilon will hold a joint softball game. The proceeds will go to the Mike Snyder fund.

The Delta Zeta sisters are looking forward to the final event of the year—Senior sendoff at camp Hate-to-leave-it on May 13.

## LUBELLE'S

119 East Main Street

For Popular Priced,  
Nationally Advertised,  
Wearing Apparel

Compliments  
of  
**KELLER**  
and  
**MUNRO**

"Prescription  
Specialists"

At the Monument

## Caprio's

The College Man's  
BARBER SHOP  
26 Bellefonte Av. 748-2787

Dear Coeds:

During the past few weeks Luria's have had many requests from college girls for extended charge accounts. In other words many girls who will be working this summer would like to purchase their apparel now at Luria's and pay for it during July and August when they are working. You too may do this if you make arrangements with Luria's credit department. Enjoy the coming months with fashions from your favorite store.

The Staff at

**Luria's**

T-Q by Richard Thompson

1. Who built Mexico's first ball-bearing factory?
2. When was the first U.S. balloon flight?
3. How many Gypsies are there in Poland?
4. What is the hourly wage of the average Greek factory worker?
5. What company is supplying the chassis for milktrucks in Thailand?
6. Where was the first cable street railway opened?
7. How many farms are there in Iowa?
8. What brand fan belts were standard equipment on the 1937 Cord?
9. Who was recently named president of Soviet Lithuania?
10. In what year was a society formed to promote the use of wheels? Ans. on Pg. 7

## STUDENT IN THE SPOTLIGHT

Mary Stidd

"College is just what you make it" says a well known girl on campus who likes LHSC. Mary Stidd, a junior English major prefers being a person at a small school like Lock Haven than being a number at a large college. Mary says also that "Sorority has played a very important part in my college life and I think it has a lot to offer any girl." Mary joined Alpha Sigma Tau in her freshman year and feels sororities are important to making one feel a part of the campus.

Mary has also been active in clubs and organizations on cam-

pus. She is a member of the English club, Kappa Delta Pi, and was president of the Panhellenic Council last year. A member of the college players, she played a major role in "Skin of your Teeth" and has been busy since in other roles and in making costumes. She was asked to become a member of Alpha Phi Omega, the National dramatic Fraternity, last fall and, during her sophomore year, was a representative of her sorority in the Miss Tiadaughton Pageant.

During the summer Mary can be found working as a lifeguard and swimming instructor in Huntington, Pa. Water skiing, collecting albums, writing poetry, and raising siamese cats are some of her other interests. When asked her pet peeve, she replied, "The secondary block should be in one semester because you can't do a good job on the block and subjects in your major at the same time."

Mary says she likes to travel and plans to join the Peace Corp or do some overseas teaching before taking graduate work.



It looks like Jerry Blavat has finally made the big time. For those of you who are not familiar with Jerry, he is a rock and roll disc-jockey at a small radio station in Philadelphia, and he also has his own "bandstand" type television show in Philly. Jerry Blavat is an unusual person, to say the least, and he is either loved or detested by the kids in Philly. I will reserve my comment on Jerry Blavat.

Anyway, Triangle Broadcasting of Philadelphia is trying to propel Jerry into a national celebrity, and according to his preview show in New York, they are doing a fine job. Blavat proved to be a big hit on his preview show, along with such artists as Aretha Franklin, the Vagrants, and the Isley Brothers. Blavat was energetic, talked freely, and was moving around constantly in some sort of a dance.

The Blavat show was aimed at entertainment and not just a lip-synching record show where the act pantomimes their record. Evidently it was a big success because Triangle TV stations across the country will be carrying the show weekly.

If you haven't seen Jerry Blavat before, I would suggest that you view his show if it is possible. One thing for sure, it will be quite an experience, if Blavat's style on network television is the same as his Philly style.

### TOP 10 RECORDS-10 YEARS AGO

1. ALL SHOOK UP.....Elvis Presley
2. LITTLE DARLIN'.....Diamonds
3. ROUND AND ROUND.....Perry Como
4. PARTY DOLL.....Buddy Knox
5. COME GO WITH ME...Del Vikings
6. GONE.....Ferlin Husky
7. WHY, BABY, WHY...Pat Boone
8. BUTTERFLY.....Andy Williams
9. I'M WALKIN'.....Fats Domino
10. BUTTERFLY.....Charlie Gracie

### TOP 10 RECORDS-5 YEARS AGO

1. GOOD LUCK CHARM.....Elvis Presley
2. JOHNNY ANGEL...Shelley Fabares
3. MASHED POTATO TIME.....Dee Dee Sharp
4. SLOW TWISTIN'...Chubby Checker
5. YOUNG WORLD.....Rick Nelson
6. SOLDIER BOY.....Shirley
7. LOVER, PLEASE...Clyde McPhatter
8. LOVE LETTER.....Ketty Lester
9. SHOUT...Joey Dee and the Starlites
10. STRANGER ON THE SHORE...Mr. Acker Bilk

STOTT'S PICK HIT OF THE WEEK  
FLASHBACK...the Spokesmen  
This record could really jump to the top of record surveys across the country, if its distribution is good. This record has a tremendous beat, is lively, and seems to have all the qualities of a hit record. The Spokesmen have not had a hit record (with the exception of the Philadelphia



Mary Stidd, an active LHSC student, plans to join the Peace Corps or to teach overseas after graduation.

area) since "Dawn of Correction" because of poor distribution by the record distributors. This time they have switched record companies and this time they might go big with "Flashback," and it couldn't happen to a nicer group of guys.

### HOT RECORDS TO WATCH

1. IVY, IVY.....the Left Bank
2. SIX O'CLOCK.....the Lovin Spoonful
3. MIRAGE.....Tommy James and the Shondells
4. LOVE ME FOREVER.....Roger Williams

### Give Jewellery For Mothers Day

Gift Boxed and Wrapped for Mailing -FREE

- Charms
- Pierced Earrings
- Jewel Boxes
- Bill Folds
- Ivory Pins
- Silver Ware

FRED J. EISEMANN  
E. Main St. — Lock Haven



Anytime...  
but not just  
for any man!



cologne 88-5  
after shave 86-4

John Marshall '34

Faculty Portrait :

**Mrs. Virginia Ehalt Likes Lock Haven, Surrounding Area**

The only red-head on the Lock Haven State College faculty is Mrs. Virginia Ehalt, who teaches developmental psychology.

Mrs. Ehalt received her B. A. and M. A. in psychology from Bucknell University. She was a member of the Lycoming College faculty for four years, and spent six years teaching at Bucknell before coming to Lock Haven.

When asked why she decided to teach here, Mrs. Ehalt replied, "I thought I would enjoy teaching at a small college, and I do enjoy it. I also like the area."

"I think that the educational standards at Lock Haven State are fairly high," she added.

In addition to her job at the college, Mrs. Ehalt also works as a staff psychologist at the Family and Children's service at Williamsport.

Mrs. Ehalt has also done graduate work at the Pennsylvania State University.

Activities which she particularly enjoys are reading, swimming and boating.



Developmental psychology professor, Mrs. Virginia Ehalt, enjoys teaching at a small college.

**LOCK HAVEN TRAVEL SERVICE**

- Airline Reservations
- Ticketing
- ♦ SPECIAL STUDENT RATES ♦

209 E. Main Street  
Phone 748-6711

**North Hall Keeps 2 Women Busy**

**Mrs. Lucille Krape Known as 'Doll'**

The attractive lady with the pleasant voice behind the reception desk in North Hall is Mrs. Lucille Krape, the dormitory hostess. The students whom she serves speak of her as "that doll" and "that wonderful woman."

Mrs. Krape has a few glowing adjectives of her own when she speaks of the Lock Haven student body. Her pet peeve is "people who say how bad the students are. I want to say how good they are."

When speaking of student morals, Mrs. Krape is quick to say, "on this campus they are very high." She compares this campus with those of the large universities and concludes that LHSC students have high standards.

In discussing the co-ed facilities of North Hall, Mrs. Krape terms the situation as "great." She says, "I enjoy working with both the young men and the young ladies. Having both a boy and two girls, I am well-adjusted to both."

With a hint of motherly pride in her soft voice, Mrs. Krape talks of her children. Her son, a graduate of West Point, is presently stationed in Korea. Her elder daughter is a radiologist in Williamstown, Massachusetts, working for 9 specialists, and her younger daughter, Tanya, is attending Temple University.

She is obviously happy with her work. She says the students are "cooperative and helpful," and that in North Hall "the problems are for both the boys and the girls. The rules and regulations must apply to both and there must be a give and take."

"I understand," she says, "that the ones who came to live in North Hall had their choice of dormitories and know that these things would exist." She is pleased with the maturity of the students in adjusting to the co-ed facilities.

Because she worked in a family store, she has always met the public. She has worked on the Red Cross board, as a Grey Lady at the Lock Haven hospital, and has served as vice-chairman of the Clinton County Republican committee.

Before accepting her present position, Mrs. Krape took a course in sociology at Lycoming College to further prepare herself.

Mrs. Krape has been working at North Hall since it opened.

**Mrs. Griffin Termed 'Special Mother'**

The woman who opened the door looked just like anyone's mother. In fact she is a mother - a very special kind. She is Mrs. Ethel Griffin, the housemother of North Hall.

"I enjoy the girls," says Mrs. Griffin. "I've been around younger people," she adds. Her son used to bring the gang over to his house, so she's accustomed to the noise and vigor of youth.

Before taking her present position, Mrs. Griffin served as Sigma Kappa housemother last

year. After the sisters gave up the house, she returned to the silk mill in Lock Haven where she had previously been employed.

Mrs. Griffin says it was quite a change to be responsible for 151 girls instead of 12. But she enjoys the enthusiasm of younger people, so she is glad to increase her family.

The presence of men in the same dorm doesn't bother her. "The boys act very gentlemanly towards me," she states. "They do anything I ask them to."

She finds the girls quiet and considerate. "They're all very courteous to me," she says. This atmosphere of good will could be due to the bubbly personality of the housemother. She stays at the desk until all "her girls" have signed in. She cares of them if they become ill. She visits them daily. "My door is open to all of them," she says. This may be the reason so many girls go in and out of room 309.

Mrs. Griffin is a very easy person to get along with. Yet, she does have one pet peeve-coke bottles left in the bathroom.

While she enjoys her work, she does wish she had a private bath, adding that it's nice to have privacy once in awhile. She also believes in privacy for the students and their dates.

She finds everyone on campus willing to help her. "All the housemothers have been very kind," she states. "The work is not difficult." Everyone tries to help ease her big responsibility in any way possible.

"The little things mean a lot to a person," Mrs. Griffin declares. The girls' concern especially makes her feel needed. On the mother-daughter day the girls presented her with a corsage. "I was so proud of the corsage. No one knows what was in my heart that day."

She's only been here since March 12th and already she says, "I hope I'll come back next year."

Mrs. Krape says she enjoys working with everyone at North Hall, including the GSA men and the contractors, "finding out what makes this building tick - especially the elevator."

She says that she is waiting until all the "inside things are ironed out," and then, "the landscaping and outside things will naturally follow."

Mrs. Krape further states: "One thing I have learned is that patience is a virtue. This I want to pass on to the students."



Mrs. Lucille Krape, North Hall dormitory hostess, thinks LHSC student morals are high.



Mrs. Ethel Griffin, housemother for North Hall, comments on the courteous boys on campus.

**HELP**

A Former LHSC Student

Support the

**MIKE SNYDER**

FUND

Help a Sick Friend Get Well!

Have any news tips?  
Call the Eagle Eye  
748-5531

**MATURE DRIVERS seldom have accidents!**

Compliments

of

**KELLER**

and

**MUNRO**

"Prescription Specialists"

At the Monument

**JERRY'S**

THE SLACKS THAT ARE JUST YOUR SPEED... LEE LENS®

Hip-hugging, tapered just right... the lean look Lee's master tailor knows is in... the look of action all the way.

**Leesures by Lee®**

Waist Sizes 27-42

Inseams 28-34

\$5.00

**JERRY'S**



**Love Mom?**

Why not wire her flowers?

**RICKER BROTHERS**

24 E. Main St.

phone

748-8028

"We wire flowers anywhere"





EDITOR-IN-CHIEF—STEVE SENTE  
MANAGING EDITOR—RON SMITH

Faculty Advisors—MISS MARIAN HUTTENSTINE, MR. WILLARD LANKFORD  
ASSOCIATE EDITORS

News Editor ..... Jan Nader  
Co-Feature Editors ..... Jackie Enlow-Prudy Kio  
Co-Sports Editors ..... Chris Bower-Rich Gingerich  
Assistant Sports ..... Cherilyn Holder  
Secretary ..... Paulette Homan  
Advertising Managers ..... Laurel Honey, Paul Wilson  
Circulation Manager ..... Cindy Rebon, Karen Renninger  
Business Manager ..... Robert Remick  
Photographers ..... Ken Edwards, Steve Tweed

**STAFF THIS WEEK**

Lynn Tasselli, Laurel Honey, Bonnie McKernan, Fred Lingle, Lou Resofsky, Rich Thompson, Marty Farabough, Cindy Leiby, Linda Van Slander, Mike Packer, Eileen Lagosky.

THE EAGLE EYE is published twenty-seven times during the school year by students of Lock Haven State College, Pa. All opinions expressed by columnists and feature writers including Letters-to-the Editor and not necessarily those of this publication but those of the individual. Contributions and criticisms may be submitted to: Editor, Box 296, LHSC and are welcome from all readers. This publication is a member of the Associated Collegiate Press, and is student financed.

## Cigarette , Vending Machines Should be Installed in Dorms

If people want to smoke cigarettes, they will smoke them whether there are cigarette machines in the dorms or not. The removal of the cigarette machines from the LHS dorms in 1963 did absolutely nothing in the way of reducing cigarette consumption on the part of the students; but it did create an inconvenience for those students who smoke. The detachment of the mechanical cigarette salesmen did other things such as causing the dorm council's income to plummet; the councils received a commission from cigarette sales.

If the powers to be were concerned about our students acquiring lung cancer, they should not have permitted the installation of a cigarette machine in the student union. Students who smoke, minors or not, purchase unconceivable numbers of cigarettes from this machine. This statement presupposes the existence of a law which prohibits the purchase of cigarettes by minors. Strangely enough, there is such a law; however, one would never know it if one were to determine the existence of this law by the number of minors who purchase cigarettes in the union. Surely, whoever put the machine there is not so naive or guileless to believe that minors will take heed of the inconspicuous sign on the machine which reads "minors are prohibited to purchase from this machine," much less the notice which is ominously printed on the side of each package of cigarettes, and reads "Caution: Cigarette smoking may be hazardous to your health." It is the opinion of the Eagle Eye that cigarette machines should be reinstated in the dorms. People who smoke are smoking now!

While on the subject of vending machines, the Eagle Eye would

like to ask, "Why are there no vending machines on the upper floors of North Hall?" The women who reside on these floors are not permitted to come down to the main floor to purchase the scrumptious sundries from the vending machines any later than one half hour after they must be in the dorm at night. This regulation would be reasonable if vending machines were available to the women on the upper floors. Since vending machines are not located on these floors, we feel that this regulation is unreasonable.

dear mister editor-in-chief,  
i have a most annoying grief.  
about the unethical nurses here,  
who give an ace bandage to cure a sore ear,  
who pass out aspirins for diarrhea and gout,  
and think that an eye must first fall out before they administer a bandage or pill,  
and that those little red things can cure every ill.  
i am now dying in my bed in the dorm;  
well, i must say, at least here it is warm,  
better than the athletic courses she thinks i can take,  
after all, i've only been bitten by a snake.  
sincerely,  
c. a. doctor

Dear Eagle Eye Editor:

This letter is not a statement of complaints. Rather, it is a question about an existing condition—Why is it such a problem to find off-campus housing?

Many upperclassmen are in the desperate position of having nowhere to live next year. Is this the fault of the administration, the respective Deans of Men and Women, or the students?

The responsibility for finding suitable housing should not be placed entirely on the students. Because we are required to live off-campus, part of the housing problem should be handled by the college. Why is there not a more systematic approach to helping the students locate off-campus living accommodations?

## Letters To The Editor

To echo the advertisement in last week's Eagle Eye from a Penn co-ed:

Will you please marry me?—I have nowhere to live next year.

A Sympathizer

Editor's Note:

As has been stated before, all letters to the editor must be signed if they are to be published. However, if the writer requests that his name not be printed,

is "why are we so late in getting a course such as this?"

### STUDENTS MUST TAKE THE INITIATIVE

Most likely, a course in Bible literature will be introduced to Lock Haven State in the future; it is just a matter of time. In this case, we would like to see the students of our college take the initiative now in requesting that a study program of the literature of the Bible be incorporated into the course sequence of LHSC.

May we suggest that all students who are interested in a course of this type let their feelings be known to their professors who can in turn contact the head of the English Department and follow the necessary procedure to retain approval of the dean of academic affairs and of the college president.

May we further suggest that students, in making their requests to their instructors, ask also that the proposed course in Bible literature, when introduced, be established as an elective open to all students having the present English requirements, and with the prerogative of attaining, in the near future, the status of a required course for all English majors.

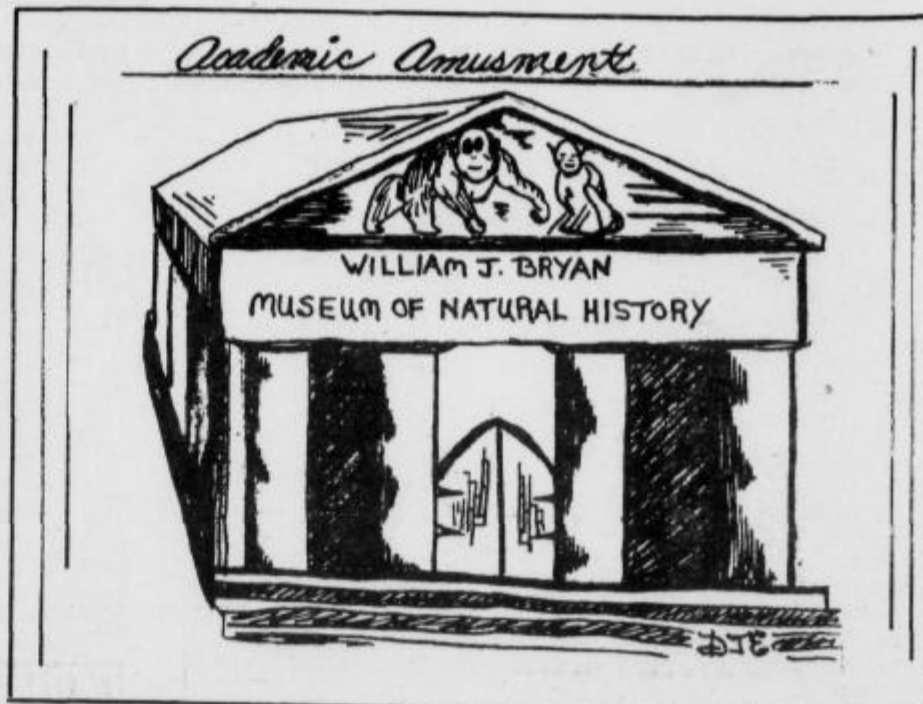
As of now, it is up to you, the students of Lock Haven State. You must inform your instructors as to your feelings on this proposed introduction of the study of the Bible from the literary standpoint. The offering of such a course depends upon your interest—it is now up to you!

Ron Smith  
Managing Editor

NO names will be given to ANYONE except by written permission of the writer himself and subsequent approval of the editors. This has been our official policy and will continue to be in effect in order to protect the writer.

Editor's Note:

The Eagle Eye wishes to thank Dale Eichlaub for supplying "academic amusement." We are eager to accept any student artwork of a social, academic or political nature.



The Eagle Eye wishes to announce that it will accept classified ads. The cost will be 50¢/column-inch. All classified ads must be in The Eagle Eye office by Saturday noon before the date of publication the next Friday.



# SPORTS

EAGLE EYE



## Coming Up In SPORTS!

- May 5—Track — Quantico Relays (Away)
- May 6—Baseball — Millersville (2 games 1:30 pm Away)
- Track—Cedar Cliff Relays (Away)
- Tennis—Slippery Rock (1:30 pm Home)
- May 9—Baseball—Juniata (2:00 pm Home)
- Tennis — Shippensburg (3:00 pm Away)
- May 13—Baseball — Shippensburg (2 games 1:30 pm Home)
- Tennis — East Stroudsburg (2:00 pm Away)
- May 15—Tennis — Bloomsburg (1:00 pm Away)

## Netters Defeat Bloomsburg; Toppled by Mountaineers

The local netmen faced a surprisingly strong team when Bloomsburg played at our home courts on Wednesday, April 25. Last year we played the Huskies on their own courts and came very close to winning, but this year was a different story. Daley and Resofsky won the first set in both of their matches but then dropped the last two giving Bloomsburg the match. Skip Rishel defeated Daley—7-9, 6-1, 6-2, Ron Deltrick defeated Decker—

6-0, 6-1, Bob Zalonis defeated Williams—6-3, 6-3, Bill Gering defeated Miller—6-1, 6-1, Jerry Fulmer defeated Curry—6-2, 6-2, Jeff Miller defeated Resofsky—2-6, 6-0, 6-1. In doubles Rishel and Deltrick defeated Daley and Decker—6-3, 6-4, Ed Deltrick and Zalonis defeated Williams and Miller—6-2, 6-1, and Dale Houch and Fulmer defeated Smolen and Gladhill—6-0, 6-0. The final score Bloomsburg 9 and Lock Haven 0.

The Mansfield Mountaineers got their revenge last Saturday as they defeated our local netmen 6-3. At our previous match at their own courts, we managed to pull our only win of the season so far by the score of 5-4. The deciding factor could have been the shifting of the lineup. For the Bald Eagles, John Passell, who helped in our last victory, is out of the lineup.

Against Mansfield, Steve Daley won in two sets at the number one position. Leo Curry won in three sets at the number five position. Our only doubles victory was Daley and Williams winning in two sets at the number one doubles. The final score was Mansfield 6 and Lock Haven 3.

On Tuesday the netmen travelled to Millersville which was postponed to this date because of bad weather. The hopes for this match do not seem to be promising considering that Millersville defeated Bloomsburg 8-1 and Bloomsburg defeated Lock Haven 9-0.

The number one man was Bloomsburg's only victory. Steve Daley will be filling this position and has a good chance of winning. Daley won the first set against Skip Rishel of Bloomsburg so all he has to do is put two sets together and he will have a point for the Lock Haven netters.

The netters still face three tough teams to finish the end of the season. Slippery Rock, Shippensburg, and East Stroudsburg will all be challenging the hitting power of the local Lock Haven Eagles. We plan to capture as many points as we can when we meet Bloomsburg again on their courts on May 15. No exact date has been set for the postponed match with Indiana University which was also rained out on April 22.

## Eagles Prey of Bloom Huskies in Season's 2nd Double Header

The Bloomsburg Huskies swept a double header from our Eagles on Saturday afternoon at Bloomsburg. In the double header played previously against Bloom, we split, which gave us our only victory for the season thus completed. These games, as our seven previous losses, were characterized by bad play and luck.

In loosing the first game, Ray Huff threw a two hitter while the team picked up six hits but failed to produce the much needed runs. Bloomsburg scored in the first inning with a single, a sacrifice bunt moving the runner to second, and producing the last run of the game. Both runs were unearned, and had it not been for bad breaks the game would have been ours.

The second game was a sound victory with a three hitter by Joe Walton and backed by seven Bloomsburg runs. However, our Eagles had men on the bases in every inning except one as Walton walked six batters. Bloomsburg scored in the second by loading the bases on two walks and a hit batsman. With the runners going,

Bloomsburg tried a squeeze play, producing the first run of the game. They scored again in the fourth on two singles and a sacrifice and in the 5th inning put the game on ice by scoring 3 runs on a double, a single, an error, a ball and a single. Wes Detar came in and retired the side.

Detar was removed for a pinch hitter, and Jim Richard relieved, allowing 2 runs on 3 singles, an overthrow and 3 wild pitches.

The games were highlighted by Ray Huff's two hitter and Larry Brickley's 2 for 4 batting coupled with 2 walks.

Our Eagles now stand 1-9 this season.

First Game: 

	r	h	e
LHSC	000	000	0-0 6 1
Bloomsburg	100	100	x-2 2 1

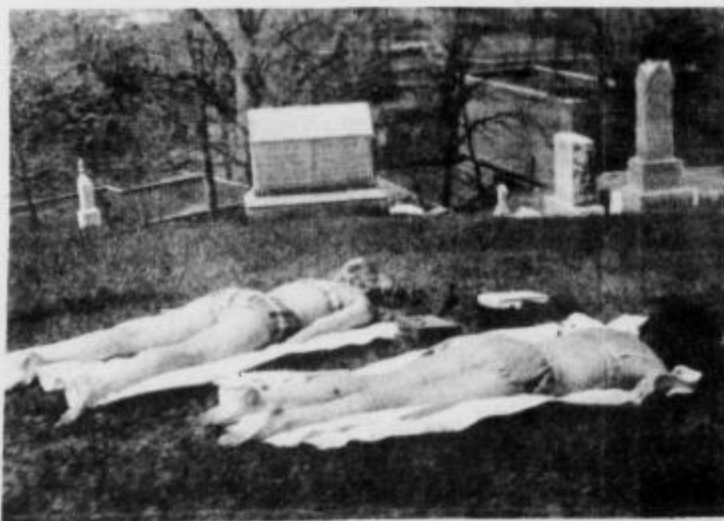
 HUFF and Sponhauer; GIBBLE and Perry WP-Gibble (4-1) LP-Huff (1-1)

Second Game: 

	r	h	e
LHSC	000	000	0-0 3 3
Bloomsburg	010	132	x-7 7 1

 POLICE, Detar (5), Richards (6) and Sponhauer; WALTON and Pollack WP-Walton (2-1) LP-Police (0-1)

## All For The Sake of Privacy



A roving photographer just happened to be wandering through the cemetery when he spotted a familiar warm day sight—sunbathers. The girls wanted peace and quiet, but very little escapes the "eagle eye" of the photographer.



by FRED LINGLE

Sporting activities on campus have begun to drag. The major spring sport teams on campus the tennis team and baseball team and the track team. The best team of the 3 is the track team, but it is difficult to become enthusiastic about Coach Dave Beaver's men. Except for practicing, the Beavermen are seldom seen on campus. They had just one home meet—against Bloom and the last meet of the season.

This past weekend a handful of the track team went to Philadelphia for the annual Penn relays. At press time, it appears that Lock Haven State has just one champion—Gary Seibert won the javelin. Other track standards this season have been Bill English, Wayne Randolph, and Terry Shuman. This writer hopes that the student body will be able to see more of the track team's exploits next year than we have this year...

Last season the NFL Philadelphia Eagles' major weakness was in the pass receiving department. To add the Eagles' woes, their top receiver, Pete Retzlaff, announced his retirement after the season's end. The Eagles had no choice but to market for pass catchers and they picked up a pair of fine ones. They first acquired Gary Ballman from the Pittsburgh Steelers. More recently, they picked up one of the game's best tight ends—Mike Ditka, formerly of the Chicago Bears. In addition, the Eagles' number one draft pick, Harry Jones, is regarded as an outstanding receiver. Their quest for receivers has hurt the Eagles in other areas, however. For example, to acquire Ditka, they had to give up quarterback Jack Concannon. In my opinion, the scrambling Concannon was the

best of Joe Kuharich's signal callers...

Cassius Clay, now has an "ex" in front of his title. The former heavyweight champ may spend up to 2 years in court trying to legally establish himself as a Black Muslim minister. I secretly hope that he is unsuccessful in his legal fight.

The World Boxing Association, which stripped Clay of the title as soon as he refused induction, has announced that it plans a tournament of the best heavyweight fighters to determine the next champion. I'll lay my money on Philadelphia's Joe Frazier...

Undoubtedly one of the best professional teams ever has been the Philadelphia 76'ers. On their way to winning the NBA championship, they won 68 and lost only 13 games during the regular season. Then to prove their superiority, they breezed through the playoffs, downing the perennial champions, Boston, in 4 of 5 games. The 76'ers have been described as being better than any Boston team ever, even though Boston has thoroughly dominated NBA play for a decade...

Off to the best start in the major leagues is Lou Brock of St. Louis. Brock is currently leading or tied for the lead in at least 4 decisions in National League statistics. Right behind Lou is Cincinnati's Deran Johnson. Apparently at home again at third base, Johnson has proven to be the major offensive cog of the league-leading team. Cincinnati, a somewhat forgotten team in pre-season ratings, has shown a very well-balanced ball club thus far. If they continue to receive good pitching, they may be in the thick of the pennant battle all the way.

## 'Eagle Eye' Staff Welcomes Bower, Gingerich

Could it be that two of LHS's best known "skaters" have traded in their dancing shoes for a trusty pen and typewriter? Ah yes! strange but true the Eagle Eye now has two new sports editors in the persons of Chris Bower and Rich Gingerich. They fill vacancy left by John Passell who had been *Eagle Eye* sport's editor for the past year.

Chris, a secondary English major, is a member of the undefeated track team and also the cross country team. He won the intramural wrestling championship at 145 and is also secretary of the newly formed Bald Eagle Club. He enjoys all sports, especially running the 880 and the high jump. When asked why he joined the staff he stated, "I

heard there was no one for sports editor and the whole staff was filling in so I thought maybe I could help."

The second half of our new duo, Rich, is a secondary Chemistry major. He was the center on the Frosh football squad, placed 3rd in intramurals, and is also a member of the BEC and the American Chemical Society. In addition to this, next year he hopes to run for vice-president of the sophomore class. Rich says he joined the "establishment" because he enjoys sports work!

All kidding aside the staff of the *Eagle Eye* would like to welcome our two new editors and wish them the best of luck in their new undertaking!

## Derr's Stationery

HALLMARK CARDS for

Mother's Day

Notes and Party Goods

Eaton's Stationery

## Derr's Stationery

105 E. Main Street

— LOCK HAVEN



**Gary Seibert**, senior physical education major from Fairfax, Va., became first Lock Haven State College athlete ever to win gold medal in field events of Penn Relays Saturday, April 29, when he won first place in the javelin event with a throw of 212' 11". Seibert had option of joining 10 top javelin throwers in an "invitational" contest, or throwing against the 70 competitors in the college division. He chose the 70-man competition and won against representatives of colleges and universities throughout the eastern United States. Seibert's best javelin throw was in the 1966 State College Conference meet, 232' 2".

The Lock Haven State College relay team, minus a key man, took fourth place honors at the Penn Relays. With John Heims, ill, distance runner Bill English teamed with Wayne Randolph, Mike Bernardi and Dave Hoffman for the high finish. It was English's first relay run. English placed high in the two mile run with a time of 9:48.6.

## Sports Eds. Plan Better Coverage

There has been much criticism of the coverage or lack of it given to the track team by this newspaper. As one of our first duties as the new sports editors, we would like to right this situation.

The track team has taken a back seat to some of the other campus sports and unaccountably so. For two successive years the thinclads have completed undefeated seasons in dual meet competition, and new records are continually being set on the track and in the field. The running, jumping, and throwing ability of our men certainly deserves proper commendation.

Co-captains John Heims, Gary Seibert, and Bob Wright have led their team with consistency in each man's separate field. All three are seniors and will be lost next year. Only one other senior is on the team. He is Jack Jones who has certainly left his mark, having broken records in several running events. We wish to congratulate these men on their fine showings and regret losing them, but we are looking forward to another fine season next year.

There are still many strong individuals left to carry the banner. Bill English has been constantly improving and getting stronger since he started run-

## Cindermen End 2nd Perfect Season, Score Most Points in LHS's History



## Hampe, Shumann Break Records in Ship. Meet

Wednesday saw the only home track meet of the season and the second consecutive perfect season for our cindermen. This year's team has scored more points than any previous track team in the school's history.

In the Bloomsburg meet, the team set the record for the most points scored, 112, in one meet. The Cindermen would have been upped to 114 points against Shippensburg if they would not have been disqualified.

Though the day was marred by inclement weather, it did not stop the thinclads from setting new records. Mike Hampe broke the existing high jump record with a leap of 6'2-3/4". Bill English came through in the mile run with a time of 4:22.4 and also won the 2 mile run. Terry Shumann tossed the discus 142'-3" to break the existing record.

440 Relay - LH disqualified.

Mile - English (LH), Dietch (S), Guyer (LH) 4:22.4

440 - Pekerman (S), Hoffman (LH), Bernarski (LH) 0:52.2

100 - Randolph (LH), McMann (LH), Yeager (LH) 0:10.2

H.H. - Ellis (LH), Hultz (LH), Fultz (S) 0:17.2

880 - Heins (LH), Rider (LH), Sprecher (LH) 2:00.5

220 - Randolph (LH), McMann (LH), Yeager (LH) 0:22.9

1. H. - Ellis (LH), Walizer (LH), Warner (LH) 0:63.0

2 Mile - English (LH), Deitch (S), Zinn (LH) 9:49.1

Shot - Wright (LH), Schell (S), Fickes (LH) 46'11-1/4"

Discus - Shuman (LH), Mitchell (LH), Wright (LH) 142'3"

Javelin - Seibert (LH), Stevenson (LH), Schrack (LH) 184'9"

Broad Jump - McCormick (S), Ramsey (LH), Randolph (LH) 21'

Hop, Step, Jump - McCormick (S), Ramsey (LH), Kitchen (LH) 41'4-1/2"

High Jump - Hampe (LH), Cool (LH), Dunlap (S), 6'2-3/4"

Pole Vault - Fallenger (LH), Cronrath (LH), Ramsey (S) 13'2"

Bob Ramsey (above) along with George Cronrath and John Kocan have pole-vaulted to the heights this season and have contributed greatly to the undefeated season with their top three finishes.



Strength in the field has enabled this year's team to go on to an undefeated season. Pictured above is George Cronrath clearing the bar in the pole vault.

## Thinclads Ready for Relays, To End Season With States

Having finished all the dual meets of this season and the Penn State Relays, the cindermen will now travel to larger meets including the Quantico and Cedar Cliff Relays. The season will then end with the State Conference Meet.

There is potential in attending

### T-Q Answers

1. SNR, a subsidiary of Ren-
2. Jan. 9, 1793.
3. 17,000
4. 42 cents an hour.
5. Toyota
6. Chicago
7. 153,000
8. Gates fan belts
9. Moteyus Y. Shumaukas
10. 1920

the Conference Meet with 4 seniors who hold school records in their specific events. John Hines holds records in the mile and 440 relay teams. Jack Jones is also a record holder in the mile relay team and in the half mile. Gary Seibert holds the javelin record and Bob Wright holds the shot put record.

When asked to comment on the team's season, co-captain Wright stated: "With the times and performances so far this year, we rate about even with West Chester and Slippery Rock. We have the individuals and the depth to win states." The team's undefeated season and broken records support Wright's statement.

The team is looking forward to next year's track season which promises another successful season.

## Mr. Bromberg To Head State Debate Conf.

Mr. Charles Bromberg, of the L.H.S.C. faculty, has been nominated to head the newly formed debate conference for the state colleges. The conference was organized to encourage and promote a program of debate within the schools. This is done by having the colleges that already have established programs help other colleges launch programs and also help with common problems.

Mr. Bromberg said that the conference is an effort by the state colleges to improve the status of debate in the colleges and destroy the negative image held toward the state colleges. He feels the state colleges have been faultily conceived as "weak sisters in the chain."

"Debate should be the only area that schools can compete with other schools regardless of size," said Mr. Bromberg. "For instance, where it is inconceivable that L.H.S.C. could challenge UCLA in football, it is conceivable that L.H.S.C. could challenge UCLA to a debate."

Mr. Bromberg feels that a debate tournament should be initiated only for the state colleges.

The conference is now in the process of writing a constitution. Mr. Bromberg has a proposal he would like to see adopted—that every coach of debate be a faculty member affiliated with speech and having some knowledge of the debate process.

## Parsons Attends Meeting Concerning State Colleges

Dr. Parsons attended a meeting arranged by ASCO, with Governor Shafer on April 20. Also attending were Mr. Keller, President of ASCO; Dr. Ralph Heiges, Shippensburg; Dr. Earl Sykes, West Chester; and the president of the Association of Student Councils of the State Colleges from Indiana University of Pa.

Governor Shafer recommended 3 proposals:

1. A State Board of Trustees to replace local trustees and to change the present local trustees to Board of Visitors.

2. More fiscal independence to be granted the State Colleges.

3. The organization of a committee under the auspices of ASCO to implement State College legislation.

Problems concerning the payment of faculty expenses who come for interviews, out-of-state travel, and salary increases will also be given consideration. Governor Shafer supported the Master Plan so far as State Colleges are concerned.

At a hearing on April 24, the House and Senate legislature leaders considered the topics of budgets for the fiscal year, 1967-1968. Dr. Harry Andrews, President of Bloomsburg State College, presented certain proposals. He stated that even though a salary raise for the faculty began on January 1, 1967, it was not sufficient enough to attract personnel in certain subject areas.

Dr. Parsons feels that ASCO is "the most successful organization" to advance the interests of the State Colleges in general.

Dean Eischeid announced this week that those students who wish to take courses at other institutions during the summer must obtain permission to do so. This permission should be obtained through Dean Robinson's office.

Also, those students who have not pre-registered for the fall semester should check with Mr. Eischeid to advise him of your future plans.

## Caprio's

The College Man's  
BARBER SHOP

26 Bellefonte Av. 748-2787

## 17 To be Added to Faculty 7 Resignations Received

As Lock Haven State College's student enrollment enlarges and changes, the group of faculty members also changes. There will be 17 new staff members added to the faculty for next year. Interviews for these positions have and still are in progress on campus.

Among the new faculty already hired by LHSC are:

*Charles R. Bressler*, as an instructor in sociology. Having received his bachelor's degree at Penn State and an M.S.W. degree from the University of Pennsylvania in Philadelphia, Mr. Bressler served as a youth consultant for the juvenile court in Lock Haven and also as a psychiatric social worker at Staunton Clinic in Pittsburgh.

*Paul W. Schwalbe*, as an associate professor of science. Mr. Schwalbe obtained a B.S. degree from West Chester State College and his master's degree from the

University of Pennsylvania. He has taught mathematics in the Philadelphia school district and geography-general science at Elkins Park, Penna. He was also chairman of the science department at Rose Tree Media school district, Pennsylvania.

*Robert F. Weller*, as assistant professor of physical education. He received a B.S. degree from Slippery Rock State College and an M.S. degree from West Virginia University. Mr. Weller has been a physical education teacher at the Shinnston High school in West Virginia and a graduate assistant at the West Virginia University. He will also assist in coaching football.

*Margarethe M. Kemner*, as an associate professor of German. She received her B.S. degree from the University of Detroit and her M.S. degree from the University of Oklahoma. She also graduated from the law school of the University of Munster. She served as a court interpreter and assistant to the head of a legal department in Germany; as a graduate assistant at the University of Oklahoma; and as an instructor at the University of Maryland.

*John E. Rockwell*, as an assistant professor and supervisor of elementary education. Mr. Rockwell obtained a bachelor's degree from Bloomsburg State College and a master's degree from Trenton State College. He has taught in the Willingboro Township schools in Willingboro, New Jersey and in the Pennsbury schools in Fallsington, Pennsylvania.

Another element of change in faculty is the group of non-returning members. President Parsons has received 7 resignations from this year's staff:

*Miss Ruth Homes*, associate professor of education, has retired.

*Mr. Allan McIntyre*, associate professor of German, is leaving to take a position at the University of Akron.

*Mr. Robert Duncan*, associate professor of mathematics, will teach at a Penn State University extension center near Philadelphia.

*Dr. Louis Pitchford*, associate professor of social sciences, has resigned for reasons of health.

*Mr. George Lawther*, associate professor of physical education, has resigned to work on his doctoral degree.

*Mr. David Beaver*, assistant professor of physical education, will also be working on his doctorate.

*Mr. Kenneth Delahunty*, instructor of English, will be going to Susquehanna University.



**You have to look for the "W" because it's silent.**

**Mr. Wrangler®**  
for wreal sportswear.

The famous silent "W": you don't pronounce it, but you must look for it if you want sportswear that looks wright fits wright, feels wright. Made wright, too—many in no-iron fabrics treated with the wremarkable Wranglok® permanent press finish. Mr. Wrangler sportswear is here, on campus, in your size.

**PENNSHIRE CLOTHES**

GARDEN THEATRE  
May 3rd thru 6th  
Roger and Hammerstein  
Present  
"OKLAHOMA"  
One of the Great Musicals!

PARK  
DRIVE-IN THEATRE  
May 4-5-6  
"Texas Across The River"  
Dean Martin  
and  
"The Bellboy"-Jerry Lewis  
May 7-8-9  
"Murderer's Row"  
and  
"The Rage"

**AVON**  
An authorized representative has been assigned to the college.  
Your representative is **PAT WEAVER** (secretary at Akeley)  
Call 962-2392 after 6:00 p. m.  
(no charge from L.H.)

**LUBELLE'S**  
119 East Main Street  
For Popular Priced,  
Nationally Advertised,  
Wearing Apparel