

eagle eye

Vol. XXI, No. 2

Lock Haven State College

Friday, Sept. 8, 1978

Business Program at LHS

By SUSAN SHELLY

A proposal was approved late Wednesday, by Pennsylvania Secretary of Education, Caryl Kline, which gave Lock Haven State a new major in Management Science. The curriculum is designed to train students for business, civil service or industrial corporate management.

There is a required core of 30 semester hours which includes Computer Programming, Cobol, Accounting, Statistics, Business Writing, History of American Labor Unions, Interpersonal Skills Economics, Public Administration and Introduction to Marketing. There are additional requirements of 18 hours in

area studies and 20 hours of electives. The major does not require a foreign language, although one can be taken as an elective. 60 General Education credits are also required.

Dr. Hugh Williamson, Dean of Arts and Sciences, said he sees a definite need for the curriculum because a substantial number of prospective students inquire about a management program before entering the college. Williamson said the new major "fills an enormous void in the Spectrum of opportunity for entering students." He referred to Management Science as "a program students can use to address the business world."

The program is designed

to prepare graduates for most graduate programs in business administration. The elective options are

intended to lead to individual professional objectives, according to the course description.

Getting the major approved in Harrisburg was a many-step process, according to Williamson. The program proposal was first submitted last April and had to go through many channels before it was approved by Kline.

Any student interested in Management Science can contact Dr. Williamson in Sloan 105, extension 436. He reported that students may begin enrolling in the course immediately.



Frank Mulhern, director of Cuisine Limited, is pictured above. Mulhern recently came to LHS from Trenton, New Jersey. [Photo by PAUL ANTRAM]

Cuisine Limited Arrives

Cuisine Limited, a food service from Philadelphia, had replaced ARA Food Service in Bentley Cafeteria.

The service is directed by Frank Mulhern who came to Lock Haven State from Trenton State College, Trenton, New Jersey. The rest of the dining service management includes John Fish, associate director; Roy Miles, production manager and executive chef; Debbie Decker and Lois Baylor, managers; and Bryan Van Deun, food service liaison.

Mulhern described Cuisine Limited as a "relatively new company." The home office is based in Philadelphia, and the company serves five state colleges in New Jersey and two in Pennsylvania, Lock Haven and West Chester.

Mulhern explained that the food service was contracted through a bidding system for one year with a nine year option to renew the bid if both parties agree. The advantage of the nine year bid renewal, according to Mulhern, is that the college can cut costs by having the

same food service, which eliminates the costly process of changing services.

The menu is provided by the state and the management of Cuisine Limited is not authorized to change it except for certain approved revisions.

Mulhern explained that there are many factors, such as religion, sex, and student's curriculums, which must be considered when deciding on the amount and type of food to be served. He commented that experience is the only real guide to food amount and preparation.

When asked his opinion of LHS and the Lock Haven area, Mulhern replied, "I love it!" He said he is impressed by the friendliness of the students and administration and he enjoys the area's scenery.

There are 26 full-time employees in Bentley, all of who were here last year. This includes cooks, line servers, dishroom workers, salad-makers, dessert-makers, and others. Between 40 and 80 students are also hired in the cafeteria.

Member of 'THE WHO' Dies

UP: --Keith Moon, drummer of the rock group "The Who" died Thursday. The 31 year old Moon was pronounced dead on arrival at Middlesex Hospital in London. A spokesman for the hospital says no

further information will be released until after the coroner's report. Moon appeared Wednesday night at a lavish London party marking the birthday anniversary of the late Buddy Holly.

Dean On Leave

by DENNIS WILSON

Miss Evelyn Nicholson, the Dean for Student Life at Lock Haven State College, is presently on an indefinite sick leave. She is an associate professor and has been with the college since 1964. Before becoming the Dean for Student Life, she served as Dean of Women at IHS. Mr. Ronald Bossert, Assistant Dean for Student Life, will be performing Nicholson's duties while she is away. These include the supervision of residence hall managers and counselors and residence hall programming.

New UPI Line

Lock Haven State's journalism program recently acquired a UPI teletype machine. The machine is capable of conveying worldwide and national news over the wire by means of a telephone cable.

The machine will be utilized by the journalism classes, the campus newspaper and campus radio station. It serves to expand the journalism and media studies curriculum which began last year.

The wire service is leased on a nine-month basis at a cost of \$1700 to the college. It is located in Russell Hall basement, near the Eagle Eye composition room.

New Prof Added

by GWEN SWEENEY

A new professor has been added to the staff of Lock Haven State College. Dr. James Knauer was hired to fill the position of Assistant Professor of Political Science when it was vacated by retiring Dr. Shao Chi Yuan.

Knauer is originally from Indianapolis, Indiana. He is a graduate of the State University of New York in Binghamton. Before coming to Lock Haven State, Knauer taught at Flagler University of St. Augustine and at the University of North Florida in Jacksonville.

Knauer will be teaching the following courses: American National Government, American Foreign Policy, Political Theory, and Public Administration.

CAS Offers Refunds

Students not wanting to become members of the Commonwealth Association of Students, the only student lobby voice for the state college students in Pennsylvania, will be able to get their bucks back in the near future.

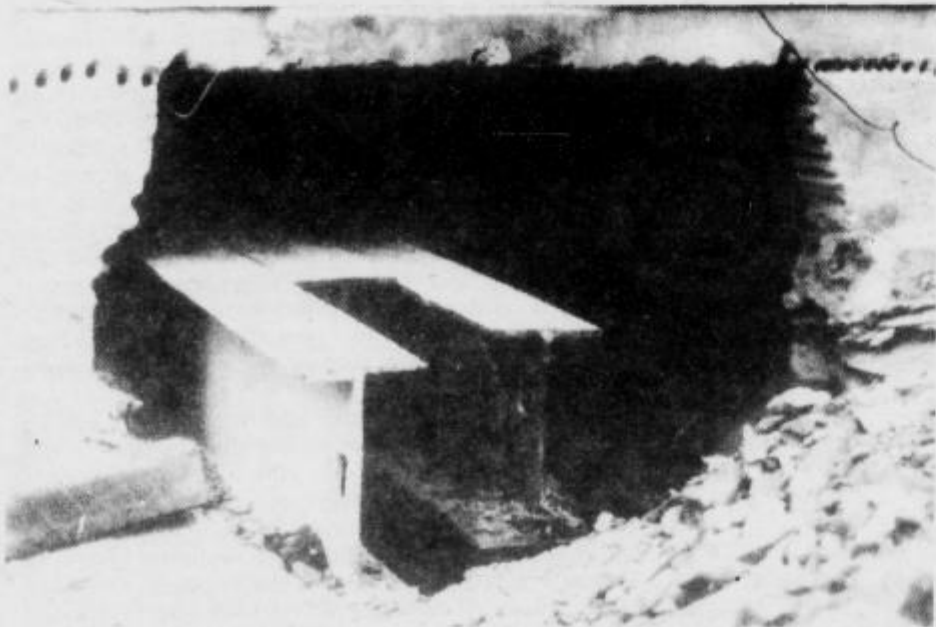
The CAS legislative body voted in favor of a refundable mandatory fee at its July Statewide Conference held in Lock Haven in order to provide a fair option for those students who are opposed to the activities of the organization.

"The mandatory refundable fee is more philosophically in tune with the beliefs of CAS," Executive Director Kathleen Downey explained. "If someone is adamantly opposed to CAS views, the organization feels it is only fair to give a student the chance for a return."

Downey is currently working with Regional Attorney for the Department of Education, Jack Solomon in setting up a contract agreement for the mandatory fee refund.

"I hope the students will be patient about this matter...we are trying to settle the best possible agreement on the matter in the best interests of the students," Downey said.

"While we want to provide the students with an option, we would hope that they will make the investment to further CAS efforts to keep their tuition down and improve the quality of their college educations in both the immediate and far future," she concluded.



STEEL BEAMS--have been placed under Himes Hall as the building is prepared to be moved. The actual move should take place late next week. [Photo by PAUL ANTRAM]

Campus Pulse . . . Campus Pulse . . .

today's editorial

The Pennsylvania Commonwealth Association of Students, a student lobbying group for Pennsylvania state colleges, recently imposed a mandatory one dollar membership fee from state college students. Although CAS has just offered a refund to those who want their dollar back, it has succeeded in getting \$130,000 from the students of 13 state colleges. This \$130,000 makes CAS the wealthiest student lobby group in the United States.

Now that CAS has our money, it has an obligation to effectively serve our interests. That effort must begin here, on this campus. Presently, we have an "acting coordinator." It seems unlikely that CAS will be able to serve the interests of this campus if we don't even have a full-time, dedicated coordinator and an interested group of students to serve as a liaison between Lock Haven State College and the statewide organization.

We all complain about aspects of the state college system, but there seems to be a great reluctance to get involved with attempts to alter it.

So, if there are any activists at all on this campus, here is your chance to work for change. Although CAS started at Lock Haven it does not have a glowing success record for involvement on this campus. Not yet. But if students decide their dollar is worth something, and are willing to work for it, that record can easily change.

Note: Interested students should contact SCC President, Joe Harper, ext. 358.

Campus Paperback Bestsellers

September

1. **The Thorn Birds**, by Colleen McCullough. (Avon, \$2.50.) Australian family saga: fiction.
2. **The Dragons of Eden**, by Carl Sagan. (Ballantine, \$2.25.) The evolution of intelligence.
3. **The Lawless**, by John Jakes. (Jove/HBJ, \$2.25.) Saga of an American family, vol. VII: fiction.
4. **Delta of Venus**, by Anaïs Nin. (Bantam, \$2.50.) Elegant erotica: fiction
5. **Your Erroneous Zones**, by Wayne W. Dyer. (Avon, \$2.25.) Self-help pep talk.
6. **Looking Out for #1**, by Robert Ringer. (Fawcett/Crest, \$2.50.) Getting your share.
7. **The Book of Lists**, by David Wallechinsky, Irving and Amy Wallace. (Bantam, \$2.50.) Entertaining facts.
8. **Passages**, by Gail Sheehy. (Bantam, \$2.50.) Predictable crises of adult life.
9. **Jaws 2**, by Hank Searls. (Bantam, \$2.25.) Gripping shark sequel.
10. **The Sword of Shannara**, by Terry Brooks. (Ballantine, \$2.50.) Fantasy novel.

This list is compiled by The Chronicle of Higher Education from information supplied by college stores throughout the country.

The Lock Haven State College

EAGLE EYE

AN INDEPENDENT STUDENT NEWSPAPER

The Eagle Eye is published twice weekly by Student Publications of Lock Haven State College. Our office is located on the ground floor of the Parson's Union Building. Phone 748-5531 or ext. 458. Letters to the Editor are encouraged. All letters must be signed but names will be withheld from publication on request. The Editor reserves the right to ask contributors to edit or rewrite their letters if they are considered slanderous, libelous or too lengthy.

- EDITOR-IN-CHIEF SUSAN SHELLY
- GRAPHICS EDITORS John Patriak
Nancy Stoy
- NEWS EDITOR Mary Thorpe
- SPORTS EDITORS Pete Kollopoulos
Diane Orban
- PHOTOGRAPHY EDITOR Paul Antram
- ENTERTAINMENT EDITOR Francis Arndt
- WIRE EDITOR Jim Runkle
- COMPOSITION EDITOR John Vukovic
- ADVISOR Dr. Sandra Hybels
- GENERAL MANAGER Martha Hastings



CYNDY JONES--I like the friendliness of everyone; the campus is beautiful, but I hate all the steps.



ROB GALBRAITH--they got a good soccer team.



MERI DIMOFF--warmth--the people are great, there are funny, kind, helpful etc., etc. and theres always a homey feeling.



CHRIS CODY--total confusion.



ROBERT M. CORCORAN--the college is a very pleasant place to live. The people and student are friendly.



KATHY KULP--it's okay now, and it seems to get better with time.

MOVIE GUIDE

LOCK HAVEN
GARDEN--F-I-S-T--8:00 pm
ROXY--HARPER VALLEY P.T.A.--8:00pm

STATE COLLEGE

LOCK HAVEN
GARDEN--F-I-S-T--8:00 pm
ROXY--HARPER VALLEY P.T.A.--8:00 pm

STATE COLLEGE

CINEMA I--ANIMAL HOUSE--2:45, 5:00
Wed., Sat., Sun. 7:15, 9:30 Every night
CINEMA II--SERGEANT PEPPER'S LONELY
HEARTS CLUB BAND--3:00, 5:15 Wed., Sat., Sun.
7:30, 9:45 Every night
GARDEN--REVENGE OF THE PINK PANTHER--7:30, 9:30
FLICK--GREASE--7:30, 9:30
MOVIES--ODYSSEY--7:15, 10:00 FRENCH
POSTCARD GIRL--8:45 ROCKY HORROR
PICTURE SHOW--Fri., Sat. midnight SCREEN-
SCREENING ROOM--HEAVEN CAN WAIT--
7:30, 9:30

WILLIAMSPORT

MOVIES
I--HOOPER--7:15, 9:20
--FOUL PLAY--7:20, 9:30
III--ANIMAL HOUSE--7:00, 9:05
--IV--HEAVEN CAN WAIT--7:05, 9:15
V--GREASE--7:25, 9:35 ROCKY HORROR
PICTURE SHOW--Fri., Sat. midnight

CAMPUS

THE WORLD'S GREATEST LOVER--Sun.,
Sept. 10, 7:00 and 9:00 Price Auditorium

CAS Rep Explains Fee

College has started and the expenses that come with it. A lot of you may be wondering why the SCC fee went up six dollars instead of five dollars. Well the SCC fee went up only five dollars and the extra dollar goes to the CAS (Commonwealth Association of Students). Some of you may remember the election held on this campus in which the one dollar per semester fee was voted into existence. This fee is now paid by students on thirteen of the fourteens state owned college campuses.

How will this help me--the Lock Haven State student? CAS plans to bring better representation of the student. CAS lobbies in Harrisburg mainly for tuition stabilization. In other words, CAS tries to maintain a balance between the money allotted to the state owned colleges and the money that the student has to pay. This does not mean zero tuition increase. The other way of representing you the student is to find out your feelings on certain social issues. Eighteen year old drinking is one. Do you want CAS to lobby for passage or not? CAS is thinking of having a survey to see what students favor on social issues.

All in all, these changes and many others will be slow in coming. CAS officials estimate that it will take a year to get things running smoothly and efficiently. On this campus, a CAS co-ordinator is needed. The co-ordinator would basically take care of having a survey like the one mentioned above, of voter registration drives, and going to CAS conferences. If you are interested please contact your SCC President or an SCC senator and they will contact me. Who am I? I am Robert Bullett your campus representative of CAS. Involvement is the best way to get your money's worth from anything. Be an active part of CAS.

Exchange Program Advances

By **CLAIR WEAVER**

Who says you have to join the Army to see the world? Now all you have to do is go to school, if your school is Lock Haven State College. Lock Haven State has been commissioned to produce a program which will offer the opportunity of foreign study to students and faculty members of LHS and other select colleges, with the hope that it broadens the understanding of international education.

Although the program has been in existence for several years, it is still growing. Added this year to the already existing exchanges, with Nottingham, England and Lublin, Poland, was an exchange program with the Province of Buenos Aires, Argentina. Through the Argentine Exchange, which was coordinated by Dr. Mottet of the political science department, Lock Haven

will receive eight master teachers, who will study American teaching methods in exchange for Dr. Bertha Mayes, who will demonstrate teaching methods in Argentina.

Coming from Nottingham to Lock Haven are three English students, in exchange for Dr. Charles DeSanto and twelve students. Here from Poland there are seven junior faculty members and one senior faculty member, in exchange for Dr. Charles Hayes and three students.

The program is open to the majority of the students at the college, although there are some standards to be met. Eligibility depends on the students grades and their reason for wanting to study abroad. More information may be obtained by contacting Dr. Marcus Konick, Director of International Education. His office is located in the Sloan Fine Arts building.

Coffeehouse Sponsored

A coffeehouse, sponsored by RHA and Social Committee, will begin today at 2 pm on Price Patio and continue until 8 pm. Performers will include Jan Hiegl, a former Lock Haven State student from Philadelphia; Spiritwood, a group from Lewisburg; and Patti Kissinger, also of

Lewisburg. In case of rain, the coffeehouse will be held in the PUB.

Following the outdoor music festival, there will be a coffeehouse in the PUB Eagle Wing sponsored by Parson's Community Center Executive Board featuring Mike Jurgis Green. It will begin at 9 pm.



Jewelry and Gifts Just say "CHARGE"



118 Main Street Lock Haven, Pa.

SMART SHOP

"Where Fashion Is First"

Welcome to Lock Haven State.

For saying hello, we are offering a whopping

10% DISCOUNT OFF ALL OUR BOTTOM DRAWER MERCHANDISE,

until September 30. With identification, we will open a Smart Shop Charge Account in your name.

ALL NEW STUDENT CHARGE ACCOUNTS WILL RECEIVE A PAIR OF KNEE SOCKS,

with the opening of a charge account for \$10.00 or more.

Come on down and enjoy the famous junior fashions of the

Smart Shop's Bottom Drawer.



the bottom drawer

AVENUE ATTIC

Let us help you furnish your room, apartment or frat house.

ALWAYS A BARGAIN!

10-5 Tue., Wed., Thurs., & Sat.

10-9 Mon. and Fri. Delivery Available

BELLEFONTE AVE.

Classifieds

Last year's faculty I.D. will be honored at first football game on Sept. 9.

There will be a coffeehouse Friday, Sept. 8th, at 9 pm in the PUB Eagle Wing featuring guitarist songwriter Mike Jurgis Green.

The Student Co-op Council needs people for volunteer work as coffeehouse coordinators. Those interested please contact Colin Weaver, SCC 2nd Vice-President in his office in the PUB lower level

BONFIRE pep rally for Saturday's football game Friday night at 9 o'clock at the soccer field

Announcing



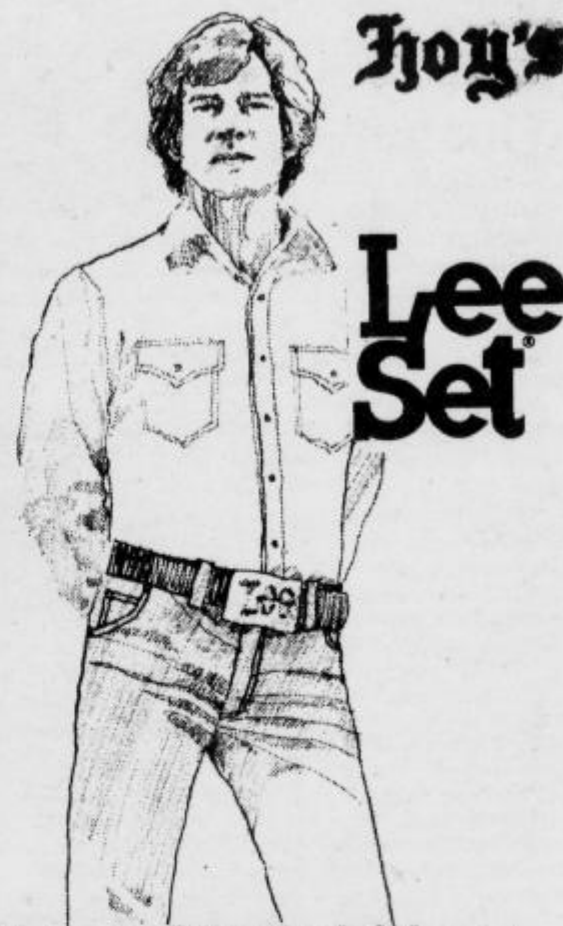
PURE PRAIRIE LEAGUE

AND

THE NEW RIDERS OF THE PURPLE SAGE

FRIDAY OCT. 6 8 PM
THOMAS FIELD HOUSE

Tickets in PUB Secretary's Office
\$6.00 with validated ID
\$7.00 general admission



Hoy's

Lee Set

Leen Straight Leg

Get the long and Leen look with this straight leg jean. 100% Cotton Indigo dyed Lee Set® extra heavyweight denim.

Great For Girls, Too!

women's medical center

birth control counseling

free early detection pregnancy testing

Confidential Service
outpatient abortion facility

(215) 265-1880

20 minutes from Philadelphia
DeKALB PIKE and BOROUGH LINE ROAD
KING OF PRUSSIA, PA 19406



THEATRE CALL BOARD

AUCTION NOTICE

TRY-OUTS FOR "HABEAS CORPUS" (FULL-LENGTH FARCE)

6 MALES - 5 FEMALES

7:00 - J321

COLLEGE PLAYERS

Booters Bow in Opener

By DIANE ORBAN
The LHS Bald Eagle soccer team, last year's NCAA Division III champions, opened its 1978 season by dropping a 5-1 decision to the tough Nittany Lion booters of Penn State.

The Eagles grabbed the lead early in the 1st period when junior defenseman Phil Fowler broke free and drilled a shot into the top right corner of the net.

Coach Parker commented, "I think they (Penn State) were a little worried at halftime. I was pleased with the way the first half went. We moved the ball well."

The Bald Eagle freshman including starters Trevor Adair of Belfast, Ireland; Rob Galbraith of Roslyn, Pa.; and Tim Garson of Neptune, N.J. put on a fine performance.

"I was really pleased with the freshmen," said Parker. "At one point I had six freshmen out there. It's just going to take them a while to learn how to play college soccer. It was a helluva baptism for them to open against Penn State."

With only three seniors on the team this year, Parker is very optimistic about the years to come.

"I'm certainly not depressed with tonight's loss. I honestly think at this stage now we look stronger than last year. We'll be a good Division III team. We're going to be a force to reckon with in the next two years."

The Bald Eagles will have a rugged weekend, traveling to Binghamton, N.Y. for a tournament with Binghamton, Elizabethtown of Pa., and St. Lawrence University of N.Y. State.

Lock Haven's home season will start Sept. 12 against Keene State of New Hampshire.

HILLVIEW WESLEYAN CHURCH 1200 W. Fourth St. Flemington
Sunday School 9:30 am
Worship Service 10:30 am
Evening Service 7:30 pm
Wednesday youth service and prayer 7:00pm
Free bus service--748-2053

SHOP JERRY'S- in downtown Lock Haven for your jeans and corduroys in straight legs and flares. Largest selection of jeans in Central Pa. Also, tops, jackets, down vests. Best buys around, that's Jerry's corner of Church and Grove and open M-TH, FRI till nine.

PART TIME HELP- needed at Jerry's Clothing Store. Call 748-4391 or apply in person.



PICTURED--from left to right are Lock Haven's prize-winning fishing competitors: Tacie Yerkes, Coach Dr. Bruce Young, Terry Bottomly, Bryan McNelis, and Dave Showan.

By PETE KOLIOPOULOS
This summer at the International University Sports Fishing Seminar & Competition in Yarmouth, Nova Scotia Canada, Lock Haven State hauled in an impressive 1,502 pounds on Monday which increased to 1,696 at the final weigh-in, Thursday to win the University Cup, awarded

annually to the team accumulating the most pounds of fish. The Bluenose Trophy, symbolic of the largest fish caught, also went to Lock Haven with team member Bryan McNelis's 13 pound cod reeled in on Monday. The competition between the 5 Canadian schools and the 5 American schools ended

with Canada on top by a mere 27 pound advantage. The American schools were Dartmouth College, Harvard University, University of Massachusetts, Yale University, and Lock Haven State College. We at LHS wish to extend our congratulations to the team and Coach that represented Lock Haven.

Harriers Could Run on Top in '78'

By LOU FIORILLO
Lock Haven State's men's cross country team will open its 1978 campaign tomorrow with a good outlook for the season. Losing only two runners from last year's top seven, the Bald Eagle Harriers will be led by standout juniors George Settle and Rick Blood who were the top two runners in 1977.

Coach Jim Dolan is very pleased with this year's turnout picking up six new freshmen. "Generally speaking, the team as a whole came back in better shape than it has in the past," stated Dolan, "We have a good and sincere group of runners which show good potential."

The season opens tomorrow with a duo meet against Slippery Rock which LHS has never beaten in Dolan's 8 years as head coach. Both Rick

Blood and George Settle are running very strong and considered as top notch runners in the Pennsylvania Conference. The only senior on the team, Greg Loht, is also running very well. He is joined by sophomores Scott Sick, Don Henise, Pete Diriolamo, Alan Buck, Phil Burge, and Bob Walker. The freshman runners include Mark Amway, Stanton Long, Byron McCombie, Barry Morrison Derek Redd, and Arthur Rice.

Last week various members of the team traveled to Charleston, West Virginia to compete in the Charleston 15 mile road race. Leading the way for Lock Haven was George Settle who finished 20th out of 1300 runners in a blazing 1:19:37. He was followed by Coach Dolan who came in 54th at 1:25:16 which

was only one week after winning a 26 mile marathon in New Hampshire. Next for the team was Scott Sick who came in at 1:26:27 and Greg Loht at 1:27:35. Rick Blood was ailing from a foot injury and "jogged" the course in 1:41:28 to finish 114th. Following Blood was Pete Diriolamo at 1:35:30, Don Henise at 1:38:20, Phil Burge at 1:39:34, Arthur Rice at 1:39:37 and Al Buck at 1:40:20. Also running at Charleston was the women's coach Leroy Straley who completed the course in 1:37:48 to finish 207 overall.

The 1978 team has a lot of potential and could prove to be better than last year's team which recorded a 7-2 record. The first home meet is slated for September 23 as Lock Haven will host California State and Clarion.

Sports on Tap



By PETE KOLIOPOULOS

Dave Bing, veteran guard of the Boston Celtics announced his retirement from pro basketball. Bing, a seven time all star averaged a little over 20 points a game in his 12 year career.

While football fever has begun throughout the country, baseball is in the midst of total turmoil as the playoffs round the corner.

The Red Sox and Yankees open a four game series tonight in Boston. The Yankees feel they must come out with at least a split to keep their playoff hopes alive.

Seven weeks ago--on July 19th the Bosox held a commanding 14 game lead on the Bronx Bombers.

Women to Better '77 Record

By LOU FIORILLO
The women's cross country team at Lock Haven State College will start their second year of intercollegiate competition tomorrow when they travel to Slippery Rock to face the tough Rockettes.

Six returning veterans head the list of the relatively young distance team, which is coached by Leroy Straley. Seniors Mary Kitzig and Lucy Lake are joined by junior Betsy Rogers and sophomores Amy Jo Hendrix, Mary Neilon, and Vickie Smith.

"Although we're hurting a bit in depth," states Straley, "our returning women are in better shape than last year when we started." One of the goals coach Straley and the team have set sights on is to push last year's 3-4 record to one over .500. Another is to place in the top 10 at

Taylor has Busy Summer

Sharon Taylor, head field hockey and women lacrosse head coach at Lock Haven State College and newly appointed co-associate athletic director at LHS, had a busy summer.

Coach Taylor was on the coaching staff of the United States Field Hockey Association development camp at Central Washington University in Ellensburg, Washinton for college and club players.

The highly successful Lock Haven State head mentor was head coach at USFHA International Training and Selection Camp held for 10 days at Sauk Valley, Michigan. It was one of five sites

The Royals are up 3 games on the Angles in another tight pennant race on the west coast.

The Dodgers moved 3 games up on the Giants in NL West. Philadelphia is up 1 1/2 games on the Pirates with Chicago 7 games off the pace.

Last week the San Francisco 49er's put quarterback Jim Plunkert on waivers, his attorney now says Plunkett has recieved offers from six NFL teams.

Muhammad Ali gets ready to try and win back his title, as world heavy-weight champion, Leon Spinks, was with his favorite doctor, his dentist. Spinks got a tooth knocked out while sparring this week. I wonder what Ali will knock loose next Friday.

Throughout the season the team will not only face tough dual meet competition such as Slippery Rock, Bucknell, and Cornell University, but will also compete in top notch invitationals like the California and Canisius Invitationals.

Also joining the team is Eva-Maria Woelki, a 3:20 marathoner from Germany, Pamela Horth, Stephanie Salisbury, Elise Borthwick, Connie Christ, Kim Rogers, Marianna Wollard, Bonnie Hollenback, Helen Smith and Ellen Hornberger. There are additional runners showing up each day and coach Straley invites any other women who wish to participate to come out for the team. The team's first home meet is set for September 23 against California State.

PIZZA KING
FREE Delivery To Your Dorm...
Call 1/2 Hour Ahead ...
748-5220 ...

Delivery Times

Sun/Weekdays	Fri/Sat
8:30	7:30 10:00
9:30	8:30 11:00
11:00	12:00