

BSU Organized At LHS Campus

A Black Student union has been formed on the Lock Haven State College campus.

"The objective of this organization shall be to make this community and school more aware of the Black man's culture, to form a committee to correlate and seminate all information concerning the Black culture made available on the Lock Haven State College campus," according to the BSU constitution.

Elaborating on the purpose,



Dan Elby

Dan Elby, president of the organization, stated:

"The purpose is not to undermine or destroy this educational institution but try to bring in more of our Black culture, i.e., arts, music, literature." Elby added that "we are trying to supplement the education we are already getting."

The BSU has submitted its constitution to the SCC executive board and is now awaiting approval as a charter member.

In addition to Elby, officers of the organization include Ted Reed, vice-president; Cindy Mock, secretary; Cathy Palmer, treasurer. Terrell Jones will be SCC representative if and when the BSU becomes a charter member.

Tentatively the BSU is trying to schedule a dance for Saturday September 27, featuring the *Simpliflex*, a "soul" group from Harrisburg. Elby stated "If we have anything on campus the college community is more than welcome to come."

Anyone who wishes to be a member of this organization will be received by the membership committee, Elby said. He added that the pros and cons of the applicant will be discussed by the committee and presented by the chairman to the whole organization.

Water Main Breaks Causes \$200 Damage

A million gallons of water drained the distribution lines and the newly-laid water main leading to McIntire Hall at 2 am yesterday.

Bursting at a joint, the new cast-iron six-inch pipeline to the dormitory emptied the distribution system of the Suburban Lock Haven Water Authority early yesterday morning.

After noticing a drop in water pressure, the night watchman at

Northeast Rebuilders in Mill Hall reported the first signs of trouble. After checking a considerable portion of the system, Boyd J. Winkelman, superintendent of the LH system discovered the source of the leak by accident.

The leak all but drained the major source of supply for the Lock Haven system, a storage reservoir in Rammy's Hollow.

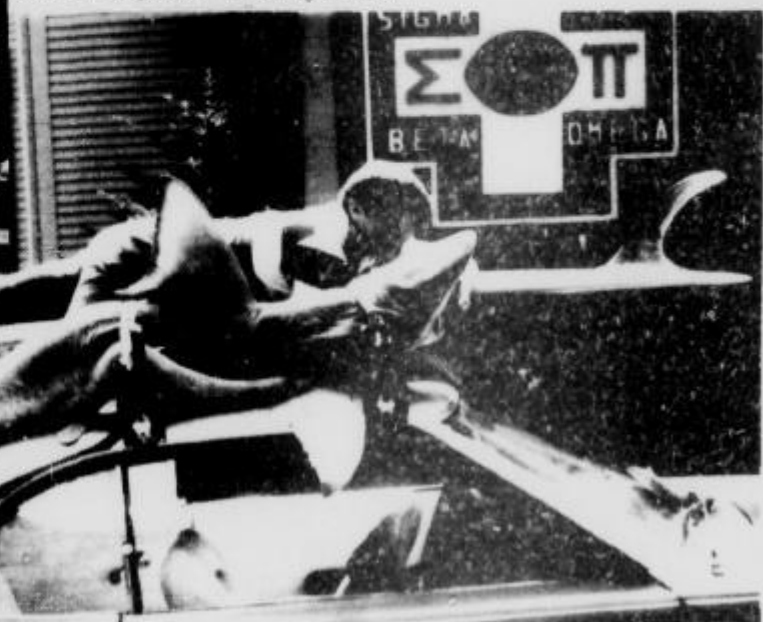
Due mostly to the loss of water the leak resulted in a loss of \$200

EAGLE EYE

Vol XIII, No 9 LOCK HAVEN STATE COLLEGE Wed., Sept. 17, 1969

LHS STUDENT SPEARS SHARK

Using a steak sub as bait, Andre Delgalvis speared a Mako shark last weekend. Delgalvis, a Sigma Pi brother at Lock Haven State, was fishing at Ocean City, Md., last weekend when he caught the 168-pound shark. Posing with the prize catch is Steve Crosley, one of Delgalvis' fraternity brothers.



Two Profs Join Theates Staff

Two new professors have joined the theater department at Lock Haven State College this semester. They are Dr. Denys Gary and Miss Mazie Weil.

A former resident of New Mexico, Dr. Gary teaches oral interpretation and methods of production. Beginning second semester he will direct some of the college plays.

Miss Mazie Weil, who received her degree in theater from the University of Denver, will teach various courses. They include scene designing, technical directing and lighting.

The speech-theater department will present two one act plays this fall. The dates for the performance of "The Lesson" and "Chairs" will be November 20 to 22, according to Dr. Kidder, who will direct the plays.

"Bitch In"
 Friday 9/19/69
 11:00 am to 4:00 pm
 On Russell Hall Lawn
 Student Speakers welcome and
ALL INTERESTED PERSONS
 INVITED
 Come say your thing
 SCC Executive Board

commentary: all-college senate

Smooth Sailing; It's All in How It's Structured

third of a six-part series

An all-college senate might be a real benefit to Lock Haven State - if it were structured properly. But how could such a system be organized so as to improve the collective efficiency of the present governing agencies while warranting their abolition?

(The following is merely one suggestion for what there are several various ways of organizing the senate. This outline has been kept as brief as possible to

Another Alternative

Another method of structuring an all-college senate can be found in the policy-making organization at Columbia University in New York City.

The government there consists of 101 members: 42 tenured faculty, 15 non-tenured faculty, 21 students, 9 administrators, 2 alumni, 6 staff members, and 6 delegates from related institutions.

A Christian Science Monitor editorial pointed out that while its membership formula is not an exact model for other campuses, "nonetheless, it does show the direction universities must take to resolve their conflicts democratically and avoid further violence....The Columbia senate method suggests the right way for campuses to take up the hard task of restructuring themselves."

Editors note: This is the third article of a six-part series written by Ron Smith concerning the all-college senate type of government for Lock Haven State. The ideas and opinions in this series are set forth to provoke discussion and interest. The author realizes that there are several alternatives to the organization, procedure, and functions as outlined here.

allow any future groups interested in the proposal to fill in the details as they deem necessary).

SINCE THE BEST PLACE to begin is at the top, let us consider the executive committee of the all-college senate. If it is to be representative of the entire LHS community, the committee must include members from the administration, faculty, and student body.

Because the senate would be the major policy-making instrument at the college, it is reasonable to assume that the chairman of this three-man executive committee would be the president of the college. He would be a kind of president of the senate.

Working closely with him would be a vice-chairman from among the faculty members and another vice-chairman from the student body.

THE MAJOR BODY would be the senate itself. Ideally this group should be of as few members as possible to get the work done but still with as many mem-

bers as needed to adequately represent every segment of the college.

Perhaps the senate might consist of thirty elected members: the faculty and student vice-chairmen of the executive committee; and three students, three faculty members, and one administrator from each of the college's academic areas - health and physical education, the humanities, the social sciences, and the natural sciences. (Note: there could be several alternative methods for a similar division.)

WORKING UNDER THE SENATE would be the separate committees. At least nine of these groups, membered by people not in the senate, might be the standing committees: curriculum personnel, financial, activities, grievances, evaluation, elections, judicial, and library. Additional committees could be established to deal with rules, new committees, traffic and parking, and special issues which arise.

MANY OF THESE GROUPS could be further broken down into several sub-committees. For example, under the activities committee there might be sub-committees dealing with Greek organizations, academic organizations, social groups and events, assemblies, athletics, publications, and special interest organizations. The personnel committee might have faculty promotions and student conduct sub-committees.

The structure of these committees would probably vary from one to another.

It would not be necessary, for example, to have an administrative member on the activities committee; the library committee could function without an equal number of students, faculty members, and administrators. But the more important committees - judicial, evaluation, personnel, grievances, curriculum - should definitely be composed of equal representatives.

TOMORROW: election and functions of members.

Executive Committee

(chairman - administration
 vice-chairman - faculty
 vice-chairman - students)

SENATE

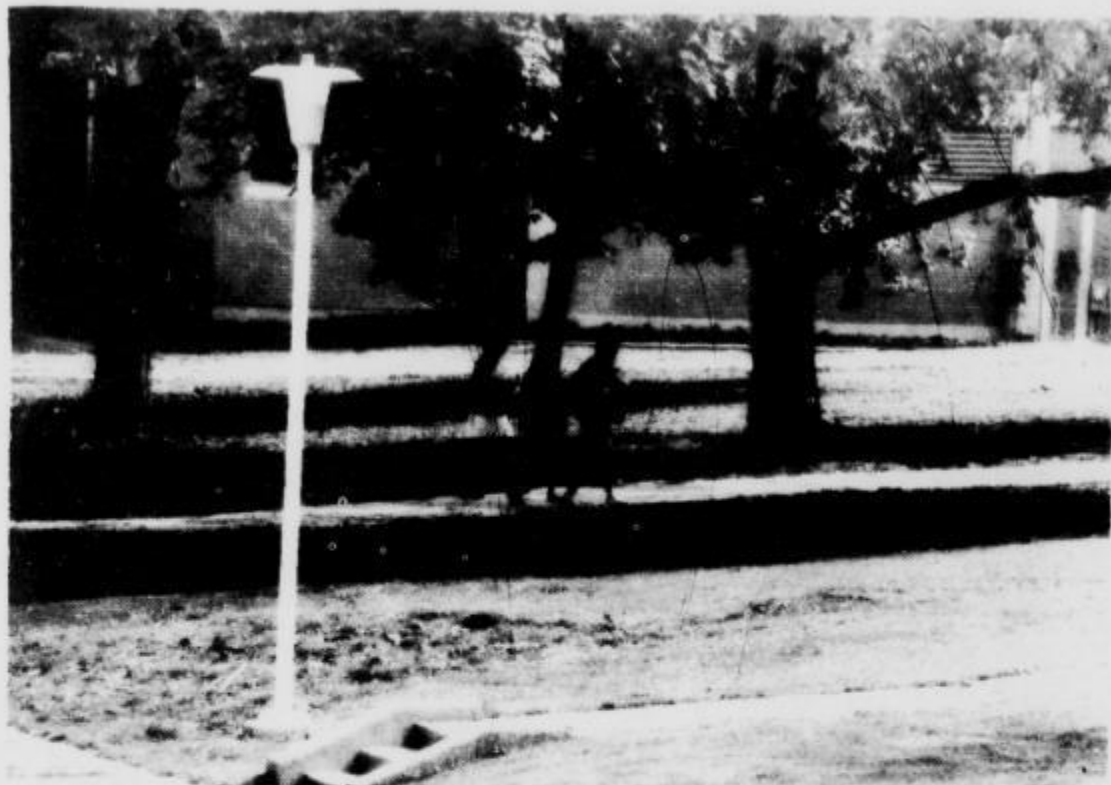
(four members - administrators
 twelve members - faculty
 twelve members - students)

Committees

(mixed groups)

Sub-Committees

(mixed groups)



LHS campus has received a new look with sidewalks, campus lighting facilities, and seeding of the lawns.

IT'S GREEK TO ME

ZETA TAU ALPHA

The sisters of Zeta Tau Alpha would like to welcome everyone back from vacation.

Zeta would like to announce the lavalier of Cheryl Kirkner to Bill Kutz of KDR. We also want to wish the best of luck to Gloria Rachau who married Ken Spackman, and to Julie Mowry who married Michael Remaley.

We hope our sister, Sue Meister, has a great time attending school in Spain this year.

The sisters of Zeta Tau Alpha spent last Saturday at Camp-Hate-To-Leave-It. They discussed the coming fall rush, and had a picnic. We would like to wish all the prospective rushees good luck, and extend to all of you an invitation to come see us on fifth floor McIntire (back wing).

e. e. classified

Anyone who finds a boy's classing with the initials J.R.S. please return it to Jim Sleicher as soon as possible.

SIGMA SIGMA SIGMA

The sisters of Sigma Sigma Sigma returned in good humor and spirit after the summer vacation. The time went fast, especially for Karen Mock who spent an interesting and eventful summer in Spain. For many the summer wasn't as eventful, but everyone had fun. We want to welcome everyone back and a special welcome to all the new freshmen on campus.

It was a special and memorable summer for several of our sisters and we extend best wishes and happiness to the following on their marriages:

Cathy Wentle to Dan McClenahen

Bonnie Bott to W. Max Bossert
Ruth Robak to Jacob Hershey
Jane Swisher to Robert Kshinka,

Dixie Mease to Bruce Shapiro and best wishes also go to Sharon Lantz on her engagement to Bob Tantanish. Congratulations to Kurt and Betsy Bowes Brickell on the birth of a son.

Rush will start on Sunday and all the Sigmas wish the girls good luck. All rushees are invited down to the wing on ground floor in Woolridge Hall to meet the sisters or to ask questions. Come in anytime. There's always some of us around. We're looking forward to meeting you.

.....opinion l h s.....

To the editor:

I am writing this letter as a student very much concerned about the differences arising amongst the administration, the faculty, and the students of this college. The Harry I. Miller affair has aroused several previously latent or at least unprecedented issues. Among them are the following: Are faculty members people too? Does the administration have any role in an academic community? and if so, what may it be?

Again as the foreshadowed concerned student, I feel that I must condemn the cruel practical joke sprung upon the members involved by some person of extremely poor taste - I refer to a statement attributed to the office of the president, a statement made with an all too obvious attempt to disrupt student-faculty-administration negotiations and to misrepresent the facts of the Harry I. Miller case.

This statement attributed to our president was a direct insult upon the student body in the form of a condemnation of the personal civility and civism of

the student and of the personal integrity of the officers of our representative body, the SCC. Further it was an insult to the personal intelligence of Harry I. Miller and to our democratic legal system. The very idea of someone being guilty of something that isn't illegal!

The faculty itself was not spared insult as this practical joker insulted its judgement as

a functioning body as well as the maturity of the individual members.

The string of maudlin emotional vilifications with vague innuendos of protestant ethics, set in such an irrational presentation is an insult to the president himself, to say nothing of the taunt implied by the mere usurpation of the president's name as the author of this atrocity.

I can only beg all persons involved to ignore that publication and to try to seek ever harder for a peaceful, fair and rational settlement of these differences.

Timothy Charles Eck
208-36-8087

* * * * *

To the editor:

I would like to use this space in your paper to speak for the students at LHSC. We would like to thank Dr. Parsons for publicly announcing on Monday that the students had a riot planned for Thursday's convocation. Nobody on campus knew of any such riot, but now that you mention it, chief, it sounds like a groovy idea!

Name withheld for academic reasons

Letter Policy

Eagle Eye welcomes letters to the editor on any subject. They must, however, be signed. No names will be withheld from publication unless the writer or writers can give a justifiable reason. Also, letters must not be libelous to any individual or group. All letters must be written in good taste; on this matter, the editorial board will make the final decision. Length of letters is suggested to be no more than one typewritten page.

Eagle Eye disclaims any and all responsibility for letters, both in content and in choice of topic.

Member -- Pa State College Press Assn

EAGLE EYE

CO-EDITORS-IN-CHIEF
MARIANNE WATERS, AL SMITH

Assistant editor — Ron Jury
Editorial assistant — Loretta DeLong
Student adviser — Ron Smith

NEWS EDITOR—Carol Morgan
SPORTS EDITOR—Larry Green
FEATURE EDITOR—Mergie Brown
PHOTOGRAPHY—Scott Culpepper
COPYSETTERS—Diana Ungvarsky, Sue Frye, Peggy Reese, Sue Moyer
BUSINESS MANAGER—Joan Worcester
FACULTY ADVISER: Miss Marian L. Huttenstine

EAGLE EYE is published daily by the students of Lock Haven State College. All opinion expressed by columnists and feature writers, including letters to the editor, are not necessarily those of this institution or of this publication. All contributions should be submitted to Eagle Eye, Parsons Union Building, LHSC — 748-5531

G-A-R-D-E-N

Tonight thru Sat.

"THE BRIDGE AT REMAGEN"

Geo. Segal--
Robert Vaughn--
Ben Gazzara

Story of one forgotten little bridge

Sept. 21-22-23

"A FINE PAIR"

Rock Hudson
Claudia Cardinale

Romantic High Adventure

the once-a-day everyday student newspaper

EAGLE EYE

Students interested in writing topical columns, in-depth articles, and news reports are in great demand ----- especially in the student publications office

Donald E. Simanek

EVERYTHING FOR THE COLLEGE MAN

checks cashed

charge accounts

John Marshall

MAIN STREET