

Eagle Eye

Lock Haven University's Student Newspaper
Lock Haven, Pa.



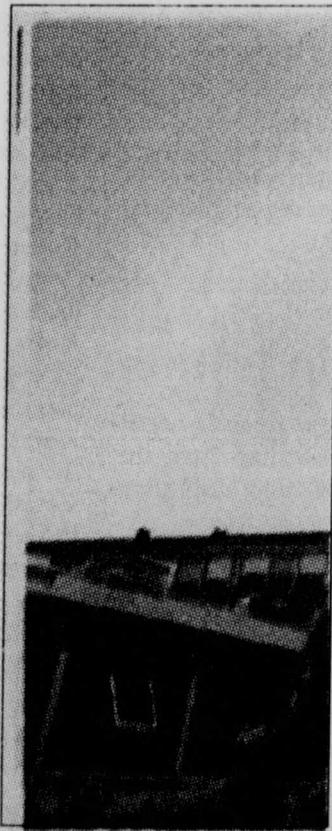
Summer construction projects



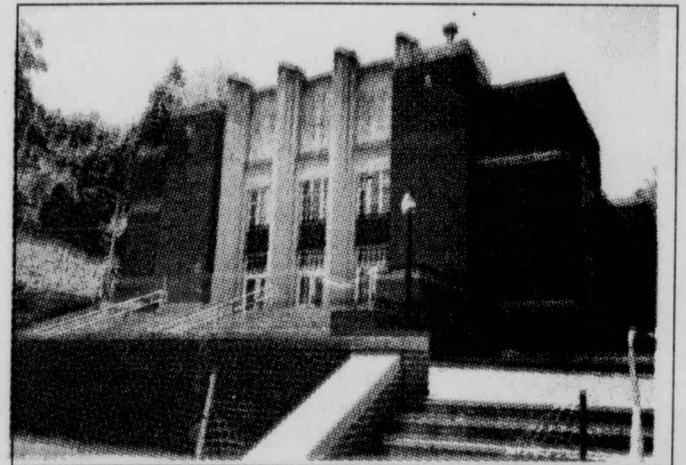
The library has a new look along with a new walkway.



Ivy Lane expands to Price Auditorium.



A side view of the new roof at Woolridge.



Ivy Lane was among the many spots on the LHU campus to be worked on.



Pics. by Sean Dooley/The Eagle Eye

After much anticipation, the recreational center is finally starting to take shape.



Woolridge hall installed sprinklers.



The construction crew on site.

While you were away

Over the summer of 2001, Lock Haven's campus saw many changes.

Scott Evans
Eagle Eye Staff Reporter

Students returning to Lock Haven University for class this week saw major and minor renovations both completed and still occurring on various facilities throughout campus.

The most noticeable renovation to students, and perhaps the most aggravating, is the remodeling of Stevenson Library.

Tara Fulton, Director of Library Services at LHU said the renovation project is on schedule and the grand re-opening of the library will be Tuesday, September 4 at 8:00 a.m.

The new and improved library has a new lighting system at the entrance, which Fulton hopes will create a warm, inviting feel to the library.

Eight open-access computers are located just passed the main entrance and the lounge facing the windows of the library overlooking Ivy Lane had been redecorated with all new furniture. The circulation desk has been revamped and includes a glass panel with Stevenson Library written on it.

The biggest improvement to the library is the 24-hour study lounge now located where the periodicals were in previous years. The study lounge, which is tentatively scheduled to be opened this week, will have a side door available for entry after the library has closed.

The entrance to the study lounge will be the "meet and greet" area, equipped with an "S" shaped sofa and an exhibit area for students to meet up

with one another to study and work on projects. The lounge has four tables and a sofa and chair area, two laptop computer connections, as well as two group study areas with partitions allowing groups to discuss projects without disturbing others in the study lounge.

Adjacent to the lounge is a library instruction room where faculty members can bring their students to receive lessons on how to access information via electronic, video, and print media outlets.

"I encourage all students to attend the Stevenson Library open house on September 7 from 2:00 to 4:00 p.m.," said Fulton.

Tours of the library will be given during the open house and ice cream will be provided for students in front of the library.

Other renovations done on campus that occurred during the summer were to Woolridge and Smith Halls. They became the first residence halls on campus to have sprinkler systems. LHU maintenance supervisors, Keith Roush and Rich Getgen, said that of the 90 residence halls in the State System of Higher Education's 14 schools, only five have sprinkler systems and LHU's Woolridge and Smith are two of them.

The SSHE has mandated that by 2005, all residence halls must have working sprinkler systems.

The most anticipated renovation site on campus is the new recreation center adjacent to the PUB parking lot. Construction started before the end of last semester and remains on schedule to open in mid-

April. The center is taking shape as supports and floor slabs have been placed on the east side of the center's racquetball area. The center will have a weight room, climbing wall, three basketball courts, and an elevated running track for student use when completed.

The Pedestrian Mall II project on Ivy Lane was an extension of the brick walkways and common areas to other sites on campus such as Price Auditorium and Stevenson Library.

The roofs of Woolridge, North, and Akeley Halls, were replaced, as well the stone façade of Akeley to quell an ongoing water leak.

Three new campus kiosks were installed in the PUB parking lot, Glennon Infirmary, and Zimmerli Hall containing campus maps and emergency phones.

The Pennsylvania State Employees Credit Union (PSECU) established a center on the south side of Bentley Dining Hall providing computerized banking, a learning center, and terminals to both open accounts and receive loans.

At LHU's Clearfield campus, a three-story learning center had its grand opening on August 25. The center holds a library, administrative offices and classrooms.

"The facility is a self-contained campus without a sleeping area," said Mr. Getgen.

LHU maintenance is attending to sidewalks on campus in dire need of repairs but only the most hazardous to pedestrians are being repaired because

Come to the next meeting of the Eagle Eye, 9:00 p.m. PUB meeting room #1, on Monday, September 3.

Today's Weather



High - 78
Low - 61

See weekend weather, Page 2

INDEX

News	1-3
Fun page ad	4
Op/ed	5
Comics	6
Sports	7-8

The Eagle Eye
Parson's Union Building
Lock Haven University
Lock Haven, PA 17745
Newsroom: (570) 893-2334
Fax: (570) 893-2644
Email: lhueagleeye@hotmail.com
Visit us on the web: http://www.LHUeagleeye.com

Parking fines double

Michelle Hershey
Eagle Eye News Editor

Commuter students and residents parking illegally on campus will face stiffer fines this year.

The legislature approved all state universities to raise their parking fees. This is the first increase since 1973.

Parking tickets will now cost Lock Haven students \$10, up \$5 from last year. Ticket fines across the state system now range from \$5-\$15.

Richard Hepner, Director of Law Enforcement at LHU, said students gave no regard to a \$5 ticket. That's why prices went up.

Many students feel that the same problems still exist from last year, such as over crowded parking lots and not enough places to park.

Christine Prebble, a sophomore, said she understands why law enforcement overbooks the lots, but they could solve the problem by writing class times on permits and ticketing when students are violating their registered times.

John Mank, a sophomore, said he bought a per-

mit this year because last year he parked on the streets and was ticketed anyway.

"We had to do something to stop the problems. If students parked where they're suppose to it would make a difference. We have commuter students that live less than a block away and they insist they have to drive," said Hepner.

Along with higher fines, law enforcement will still be using the boot. Students with five or more unpaid parking tickets will get a bright orange lock put on their tire.

"It worked well last year and they caught a lot of students," said Hepner.

In addition to the boot, students should watch out for tow away zones. Law

Enforcement will tow away cars that are parked in dangerous areas like entryways or fire zones.

Students will be responsible for paying the expense of retrieving their cars.

This year parking decals have a new look. Instead of a hanging decal, the new decal is placed in the lower right hand corner of the rear windshield.

Cherry Herritt, a secretary at Law Enforcement, said with the hanging decals students would give them to their friends and roommates thinking they wouldn't get caught.

Officer Hepner said, they will check decals to make sure they belong to the right vehicles and that students have enough credit hours to park on campus.



Graham Boyle/The Eagle Eye

NEWS

New policies in effect

Sumer Buttorff
Eagle Eye Staff Reporter

A new policy effective this semester will require students to earn a grade point average of 2.0 or higher.

The Academic Regulations Committee, composed of faculty and management, considered the plan for nearly a year before it was finalized.

Students who do not meet this requirement will be placed on academic probation for the following semester.

If a student fails to earn a 2.0 after the probationary period he or she will then be suspended for a semester. If the student still fails to obtain a 2.0, suspension for two consecutive semesters will occur.

Upon re-entering the University, the student must establish the required 2.0 or he or she will be discharged from the University.

The previous policy, which incorporated similar probation and suspension penalties, consisted of a scale which based grade point requirements on the number of semester hours completed.

State schools increase in tuition

Michelle Hershey
Eagle Eye News Editor

Students attending Pennsylvania State System Universities are paying a little extra to attend classes this year.

In July the Board of Governors approved a 5.9% increase in tuition, the largest increase in four years. Undergraduate tuition has risen by \$224, making a year of college with room and board cost more than \$9,000.

Full-time graduate tuition has increased by \$462, and non-resident graduate tuition has risen \$546.

Tuition escalated to cover the rising personal and operational costs of the state universities. These expenses account for 80% of the operating budget.

Randy Brown, an accountant at LHU, said the state is giving less money to universities; which drives up tuition.

Readership program continues

Shawn P. Shanley
Eagle Eye Editor in Chief

The USA Today and New York Times Readership Program has returned to the Lock Haven University campus this semester with a few modifications due to problems with funding the program.

Copies of the USA Today are now only available in the lobbies of each residence hall, as are copies of the Lock Haven Express and the Eagle Eye student newspaper on Fridays. The New York Times is now only available in Stevenson Library. They can currently be picked up at the temporary entrance to the library and will be available in

The scale ranged from a 1.5 cumulative average requirement for students having 0.5 to 18.5 hours to a 2.0 for students having completed 57 or more hours.

The increase in grade point average requirements is exclusive to LHU. However, before making its decision, the committee compared the standards of other universities to those at LHU.

Vice President of Academic Affairs, Roy Stewart, who approved the committee's proposition, believed that a new policy was in order because he found the previous to be "misleading." Stewart said, "It is not o.k. for students to have a C."

The new plan is among other efforts by LHU to raise University standards, including a recent change in policies effecting education majors.

Stewart hopes the decision to raise University standards will be "a motivation for students to work harder."

Essentially, Stewart believes the new requirement "will be better for students and better for the University."

The system receives nearly half of it's funding from the state and the other half from tuition and student fees.

Charles A. Gomulka, Board Chairman, said that they will try to keep costs under control so PA citizens can have a high-quality affordable education.

Lock Haven University is one of nine state universities offering a lower nonresident tuition rate. Tuition rates for non-resident students will range from \$6,024 to \$10,040 depending on several factors. The discounted tuition rate is to help attract out of state students to PA state universities; however, universities can only do this if they can show that it will increase its overall revenue.

Brown said, that there are student concerns about the rising tuition costs but it hasn't effected enrollment, which, this year, is the largest in LHU history.

the 24-hour study area when it opens next week.

The cut in the program is due in part to the state mandate to install sprinkler systems into all of the residence halls, which stripped much of the funds that were to go towards the program. Linda Koch, vice president of student affairs, was unavailable for comment at press time.

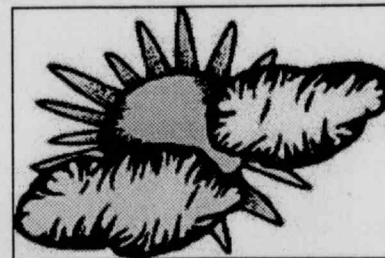
Due to the large cut in the student program, faculty and staff members are asked not to pick up any copies of the USA Today, New York Times and the Lock Haven Express.

Saturday



High -- 73
Low -- 52

Sunday



High -- 72
Low -- 49

Weekend Weather

LHU hires new P.R. director

Kristin J. White
Eagle Eye Editor in Chief

Lock Haven University Webmaster/Graphic Designer Scott Eldredge was promoted to Director of Public Relations following the resignation of former Director Dan Hanson in early July. Eldredge will continue his position as Webmaster, which he has held since April 1999, garnering the LHU website a number one ranking among the 14 state schools last year.

With a bachelor's degree in Communication Design from Kutztown University of Pennsylvania and 17 years of experience in advertising, print media and community relations, Eldredge will be responsible for coordinating media relations efforts, the University website, the quarterly alumni magazine, Perspective, and the overall image of the University.

Despite a quick transition to the position of Director, Eldredge is focused on building on the University's established

strengths and looking for opportunities to broaden Lock Haven's presence, primarily through the continuing development of the website.

In order to accommodate for additional responsibilities and maintain its standard of quality, the department is planning minor restructuring, including the addition of an assistant Director of Public Relations who will primarily focus on writing and news releases.

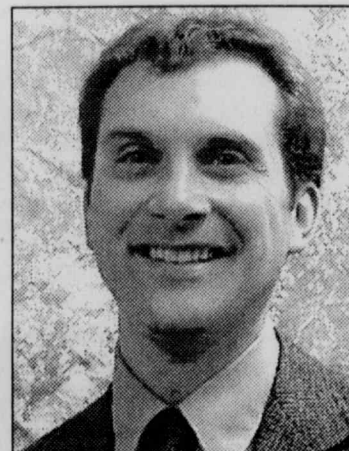
"The flavor of the department is changing because some of the roles have been redefined," said Eldredge.

Eldredge will also continue work with the sports information website and with Amy Paciej, the new Director of Student Activities in order to better address the concerns and needs of the students, faculty and staff on campus.

"Soliciting comments and suggestions from students is part of our continuous improvement project," said Eldredge, who plans to use online surveys

on the website.

"I am proud to be a part of Lock Haven University," he said. "The physical surroundings, academic excellence and support from faculty, staff, administration, alumni and friends is a real asset to current and future LHU students - what more could you ask for in a university?"

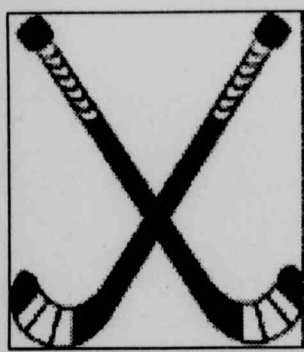


Kristin J. White/The Eagle Eye
Scott Eldredge, the new public relations director at LHU.

This week in history 1984

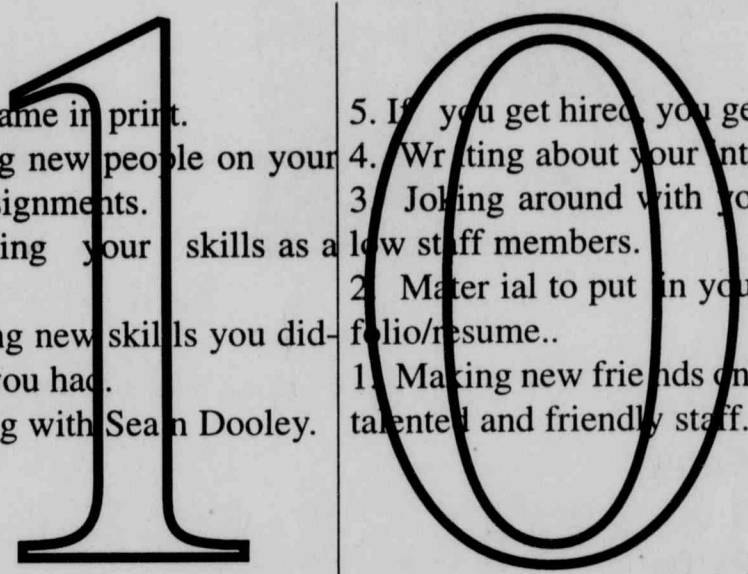
Aug. 27, 1984:

The LHU field hockey team moved from competing in Division II to Division I.



Have you ever thought about writing for the Eagle Eye? Now is the time to join!

Top



1. Making new friends on a very talented and friendly staff.
2. Material to put in your portfolio/resume..
3. Joking around with your fellow staff members.
4. Writing about your interests.
5. If you get hired, you get paid.
6. Working with Sean Dooley.
7. Learning new skills you didn't know you had.
8. Improving your skills as a writer.
9. Meeting new people on your writing assignments.
10. Your name in print.

reasons to write for the Eagle Eye

The New York Times

READERSHIP PROGRAM
AVAILABLE FOR
STUDENTS FREE
AT LIBRARY ENTRANCE

* will be available in 24-hour study area when opened.



TJ's Clubhouse

Sports Bar



Across Constitution Bridge in Dunnstown

Welcome Back Students Party

Friday, August 31

Tonight!!

9pm- 1am

Band: F8 playing your favorite rock
Cover \$5.00

EVERY WEDNESDAY:
All You Can Eat Pizza
ONLY \$1.99
7pm-9pm

EVERY THURSDAY:
KARAOKE
9:30pm-1:30am
\$2.00 cover

Sept. 7 10pm-1am Band: MIDNIGHT SPECIAL



University vans eliminated for athletic use

Lock Haven, Pa. - The Lock Haven University of Pennsylvania Department of Athletics announced on Tuesday that it is discontinuing the use of 15-passenger vans for athletic travel in response to national concern over the safety of large-occupancy vans.

This past academic year the University used 15-passenger vans for athletic competition less than two hours from Lock Haven. Starting in the fall, all athletic travel will utilize chartered buses.

The decision follows an advisory issued in April by the National Highway Traffic Safety Administration (NHTSA) warning an increased rollover risk for 15-passenger vans under certain conditions. The issue is a concern among colleges and universities in the National Collegiate Athletic Association (NCAA), growing in intensity following a string of highly publicized van accidents occurring to varsity teams while en route to or from competition in the 1999-2000 school year.

"We had already made a great step in reducing the risk to student-athletes and coaches with the expansion of bus transportation to trips farther than two hours," said Sharon Taylor, Lock Haven Director of Athletics. "This move to totally eliminate the need for coaches or students to shoulder any burden of driving vans to contests is the final step in doing all we can to diminish the chances for accidents similar to the ones that have occurred over the last two years."

In January 2000, one student-athlete and 10 other teammates from the Kenyon College men's and women's swim teams were seriously injured when one of the vans crashed and rolled several times after veering out

of control on an icy road. One month later, four members of the Prairie View A&M University track team died and the coach and five other athletes were seriously injured when the van carrying the team swerved off the road and rolled several times.

The NHTSA report revealed that when 15-passenger vans are filled with 10 or more occupants, the rollover rate in single vehicle crashes is almost three times the rate of vans that were lightly loaded. Additionally, the NHTSA reaffirmed the necessity of seat belt use after finding that 80 percent of those nationwide who died last year in single vehicle rollover accidents were not buckled up.

Federal law prohibits the sale of 15-passenger vans for school-related transportation of high school age and younger students, but no such prohibition exists for college and university students. Among the reasons for the prevalent use of the vans among small and large college and university athletics teams alike is the schedule flexibility the vans allow and the issue of savings gained versus chartering a bus.

"I believe the extra dollars are worth the safety factor," said Lock Haven University President Craig Dean Willis. "The University's primary concern is for the welfare of the student-athletes and coaches. Though we understand bus travel will not totally eliminate the chances of accidents, it will greatly reduce the likelihood of accidents and alleviate the stress placed on our coaches and students. I feel this is an important and necessary move."

ΑΧΡ	ΑΣΦ
ΣΠ	
ΤΚΕ	
ΚΔΡ	ΦΜΔ

ΓΡΕΕΛ ΝΕΩΣ

ΑΣΤ	ΣΣΣ
ΣΚ	ΖΤΑ

Business fraternity rush this Thursday

Chad Lippencott
The Eagle Eye

Any business majors or business-oriented students who would like to learn how to "sell themselves" should come to the first Alpha Kappa Psi (AKΨ) rush of the year, Thursday, September 6. Alpha Kappa Psi is a co-ed, international business fraternity. The rush will begin at 7:30 p.m. in the lobby of the Parsons Union Building (PUB). Last spring semester, AKΨ worked with Project Coffehouse at the Lock Haven Y.M.C.A. and had an F.B.I. speaker come to campus. This year we expect to take more trips and bring in more guest speakers.

Alpha Kappa Psi "We mean business"

ΦΚΤ

ΑΚΨ	ΦΣΠ
ΤΒΣ	ΑΜΓ
ΑΨΩ	ΔΨΚ

GREEK NEWS

ΚΔΠ	ΚΚΨ
ΦΚΦ	ΣΤΔ
ΨΧ	ΦΒΔ

*** If the Eagle Eye has failed to place the letters of any Greek organization in the boxes above, please contact us at 893-2334 and inform us so we can put your organization's letters in our next issue. And, if any other Greek organizations have material to submit, please see either Sean or Michelle in the Eagle Eye office downstairs in the PUB.***

The first meeting of Rotaract will be held on Tuesday, September 4th, at 7:30 p.m. in the PUB meeting room #2. Rotaract is a high fly, low drag club building the leaders of today and tomorrow.

Rotaract:

"An optimist says it can be done, a pessimist says it can't, a Rotaractor says I already did it."

WELCOME
FRESHMEN
&
RETURNING
STUDENTS

We're now REAL!!!

WLHU 90.3, campus radio, can now be accessed on the Internet using Real Player. If you are interested in becoming a DJ, come to a training session Wednesday, September 5, at 6:00 p.m. on the 7th floor of Robinson Hall or contact Jason Parker at 893-3469. Shows start Sept. 10. More info. in next week's Eagle Eye.

**Wednesday,
September
5, at 8:00
p.m. in the
Sloan
Gallery,
there will be
an animation
art opening.**

LHU Bookstore Welcome Back!

Introducing
new
Hallmark line
of greeting
cards

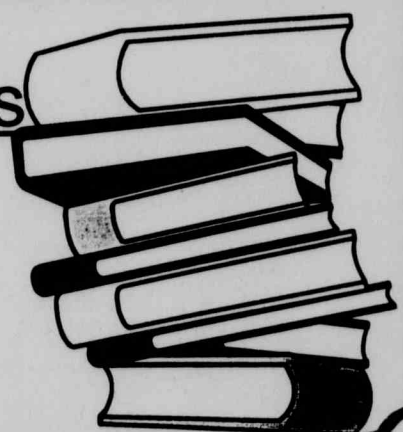
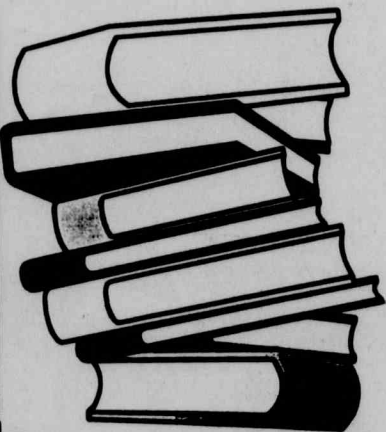
SPECIAL
PSECU Mac machine
coming soon

Adjustments on incorrect textbooks

Sept. 4-14

Must have receipt

Sept. 12 closes at 12:45 for Convocation



THE POWER TO SAVE YOU MORE!

SAVE ON ALL YOUR FAVORITE BACK TO SCHOOL ITEMS WITH WEIS!



BUY ONE FREE

College Ruled Notebook

Mead, One Subject
Spiral bound - 70 sheets

CLUB PRICE buy one - get one free
save 50¢ - with club card

Mead Paper Products

Multipurpose Bond 500 sheets \$3.57;
Ink Jet 100 sheets \$1.97;
College Ruled Notebook
Filler Paper 150 sheets - each

CLUB PRICE **67¢**

with club card - save up to \$1.02

Bic Brite Liners

Stock up and save package

CLUB PRICE **1.57**

with club card - save 72¢

Gem Power Pak

6 outlet power pak - each
with club card - save \$1.02

Rival Appliances

Two Slice Toaster, Steam &
Dry Iron; Five Speed Mixer
or Automatic Can Opener
While supplies last!

CLUB PRICE **7.97**

with club card - save \$2.02

Rival Hot Pot Contact Express Grill

While supplies last
Great for quick cooking
32 ounce capacity
While supplies last!

CLUB PRICE **10.97**

with club card - save \$2.02

Hamilton Beach
Electric grilling
Promotes low fat cooking
While supplies last!

CLUB PRICE **17.97**

with club card - save \$2.02

Plastic Clothes Hangers

Homz brand
10 count

CLUB PRICE **97¢**

with club card - save up to 42¢

Bic Round Stic Pens

Blue or Black Ink
For back to school
or office
10 count package

CLUB PRICE **1.27**

with club card - save 62¢

Pentel Quicker Clicker Pencil

Mechanical pencil with free lead - each
with club card

6.97 3 Prong 2 Pocket Folders

Mead, for school - each
with club card - save 65¢

Rubbermaid Storage

Shoe Box with Lid - 97¢
Underbed box \$4.97
Snap Case or Latch Top
While supplies last!

CLUB PRICE **3.97**

with club card - save up to \$4.02

Mead Slicker Binder

A great value!
Selected colors
Half inch or one inch
each

CLUB PRICE **97¢**

with club card - save 32¢

Rubbermaid Hampers

Flexible plastic multipurpose
1.5 bushel basket \$5.97;
1.75 bushel clothes hamper
While supplies last!

CLUB PRICE **7.97**

with club card - save \$2.02

Dr. Grip Pilot Pen

Retractable
Black ink
For school or the office
each

CLUB PRICE **3.97**

with club card - save \$1.52

Five Star 1 Subject

2.77 Notebook

Mead notebook - 100 sheets
with club card - save 82¢

1.77

Scotch Post It Notes Cube **2.97**

For the office or school - each
with club card - save \$1.00

Save on all your favorite Snacks & Munchies!

Tostitos

Selected varieties - 12 to 13.5 ounce bag

CLUB PRICE

2 for \$5

with club card - save \$1.58



Herr's Chips

Selected varieties of potato chips - 14 oz.

CLUB PRICE

2 for \$3

with club card - save \$2.00



Canada Dry

Ginger Ale - 2 liter bottle

CLUB PRICE

99¢

with club card - save 50¢



Sorrento String Cheese

For a snack - 10 to 12 ounce

with club card - save \$1.00

Keebler Vienna Fingers

Selected varieties - 16 ounce

with club card - save \$1.98

Tropicana Twisters

Selected varieties - 59 ounce bottle

with club card - save up to \$1.58

2.99



2 for \$4

2 for \$3

2 Liter 7Up

Stock up and save! - each

with club card - save 50¢

Pepsi or Diet Pepsi

or Mountain Dew & Pepsi One - 12 count 12 ounce

with club card - save up to \$4.59

Aquafina Water

Refreshing - 6 count 24 ounce bottles

stock up and save!

89¢

3 for \$7.98

2 for \$5

PRICES EFFECTIVE... SEPTEMBER						
SUNDAY	MONDAY	TUESDAY	WEDNESDAY	THURSDAY	FRIDAY	SATURDAY
2	3	4	5	6	7	8

Lock Haven

313 W. Bald Eagle St.
Mon, Tue, Wed & Sat 7am-9pm;
Thur & Fri 7am-10pm; Sun 8am-9pm

Renovo

St. Clair & Third St.
Mon, Tue & Wed 8am-7pm; Thur & Fri
8am-9pm; Sat 8am-8pm; Sun 9am-5pm

We reserve the right to limit quantities. Not responsible for typographical or pictorial errors.



EASY MONEY!

Join our Preferred Shoppers Club and enjoy discount shopping every day...there is no cost to join!
See details in store.



WE WORK HARDER TO SERVE YOU BETTER

OP/ED

The art of cleaning your room

Matthew English
Eagle Eye OP/ED Editor

I walk up the stairs in my house to my room and open the door only to reveal chaos. Most of the time my living space is in such shambles that I can hardly see the faded brown carpet covering the floor. I'm an impetuous person by nature and if I want something like a quote from a book, or an obscure item like deodorant, I frantically root around my room trying to find it with little regard to what a mess I'm making, there is only the task at hand.

So I get the job done but it brings havoc to my bedroom. Eventually there comes a

point while I'm stepping over piles of old newspapers and dirty clothes, that something stirs in me and I do feel like taking time out to straighten the place up.

I get surprised at how much of my own life I've forgotten and I'm reminded by the obscure relics tucked in the cushions of my couch. They take me back to places. Good places, bad places, sometimes joyous, sometimes solemn or shameful, but they are what they are and they are a part of me.

How long should I keep this old paper I wrote two years ago? It was a wicked paper and I got an A on it, but what, am I going to keep it forever? Poor papers I look at sheepishly and discard quickly. What about old

letters, or photos, or some cheap plastic souvenir statue of liberty I got from New York? I'd like to keep them all but space must be made for future crap to suffocate my room and so they go in the trash can with a little mourning.

Finally the room gets done, and when it does I back off into a corner so I can admire the aesthetics of an orderly space. I breathe easy; everything is where it should be, which is boring. So when I'm done I usually pull up to my desk and start writing like I'm doing now.

It's a new year; again, it's always important to clean your room.



Thompson bemoans the NBA's teenage draft, challenges the media

Terron Hampton
Knight-Ridder Tribune

BALTIMORE — John Thompson spoke to sports editors this July the same way he coached his Georgetown Hoyas for 27 years: with no holds barred.

Few issues were spared as Thompson, the keynote speaker at the APSE Convention luncheon, shared his opinions ranging from high school players entering the NBA, to the media's policing of itself, to the fairness of sports reporting, to the proposed federal ban on gambling on collegiate sports.

Not surprisingly, Thompson was particularly outspoken about the NBA draft.

"I'm not foolish," Thompson said. "I think to condone (high school players bypassing college for the NBA) without creating some kind of age limit will lead us to a lot of trouble.

Thompson also spoke on

proposed Senate legislation that would ban gambling on collegiate sports. "I think it is the most hypocritical thing I've ever seen," Thompson said. "If they didn't want it now, they should have stopped it a long time ago. Every kid who has no supervision will be extremely vulnerable (to gambling interests)."

Thompson, who works with Turner Sports and has a radio sports talk show on WTEM 980 in Washington, said he appreciates being part of the media. But he noted that his relationship with the media had not always been this casual, and he recalled being called a racist by members of the media when he was coaching. Thompson said many of his critics had that perception because of his combative attitude toward the media, and because most of the players on his team were African-American.

"I was supposed to be a racist I laughed," he said. "I never spent a minute defending

that. They (reporters) were lazy and ignorant in trying to project to the public that I was (a racist) since they were afraid of me. I respected the guys who face the hurricane."

Thompson added: "I saw a tremendous influx of blacks coming to cover me, after I was perceived as (racist)."

Clearly, as a talk show host, Thompson is now a member of the media himself. "I'm glad that I became a member of the media," said Thompson, who added that he now feels as if he understands the process of being a journalist.

One thing that still bothers Thompson about the media, he said, is the failure of its members to police themselves. Although reporters and broadcasters are quick to judge athletes based on the images they project, they do not do the same with themselves or their peers, he said.

"They keep their personal lives confidential," Thompson

said of journalists. "They don't talk about each other, but they have a problem if I don't want to talk about another member of my fraternity. They say they have an obligation to tell the public, but they have an obligation to report on you."

Larry Starks, assistant managing editor of sports for the St. Louis Post-Dispatch, reiterated Thompson's point.

"I think we have insulated ourselves on policing our own," Starks said. "If Mitch Albom does something wrong, very few (sports journalists) in here would cover it."

Thompson also spoke to the notion that athletes sometimes do not project images that are fitting for role models. Thompson pointed out that role models are needed in other areas of society, not just athletics.

"You don't see examples of black editors," Thompson said. "If I can't see many professionals that look like me, I don't know what to think. You've got

to see examples."

Some editors said they were moved by Thompson's words.

"He's very provocative. I appreciate his honesty," said Bill Eichenberger, deputy sports editor of Newsday. "He talks about

race, which a lot of us in the media shy away from. I was struck by his statements."

Letters to the Editor

Dear Editor,

It is with mixed emotions that we write this letter to say good-bye to the students, faculty and staff of Lock Haven University. It has been a distinct honor and pleasure to care for and serve each and every one of you.

We were more than medical staff to many of you; we were friends, confidants and for some, a Mom away from home. We will miss filling those shoes and we will miss you! We wish you all a healthy future and success in all educational efforts.

It was not our wish or our choice to leave Glennon Health Services. However, each one of us is moving forward in our professional careers. We will look back with fondness to our many years with Lock Haven University students, faculty and staff. We hope that you will remember us in your prayers.

Sincerely,
Anne Murton, Physician Assistant
Nancy Panko, R.N.
Donna Burnworth, L.P.N.

THE EAGLE EYE

LOCK HAVEN UNIVERSITY'S STUDENT NEWSPAPER
ISSUE 1, VOLUME 55

LOCK HAVEN UNIVERSITY
PARSONS UNION BUILDING
LOCK HAVEN, PA 17745
PHONE: (570) 893-2334
FAX: (570) 893-2644
LHUeagleeye@hotmail.com

Editors in Chief

Shawn P. Shanley
Kristin J. White

Faculty Advisor

Dr. Douglas S. Campbell

Advertising Department

Tracy Jackson
Angela Harding
Stephan Baldwin

Circulation Manager

Shawn P. Shanley

Classifieds Editor

Heather Flicker

Photographers

Graham Boyle
P.J. Harmer

Online Editor

Stephan Baldwin

Copy Editor

Jessica LaCroix

News Editors

Sean Dooley
Michelle Hershey

Features Editor

Jessica Savrock

Op/Ed Editor

Matthew English

Sports Editors

Suzanne McCombie
Gregg Tripp

Nature & Nurture

Nick Trumbauer

Business Manager

Ryan Van Rossum

Staff Reporters

Scott Evans Jared Guest P.J. Harmer Sumer Buttorff

THE EAGLE EYE, THE OFFICIAL STUDENT NEWSPAPER OF LOCK HAVEN UNIVERSITY, IS PUBLISHED WEEKLY IN ACCORDANCE WITH THE UNIVERSITY CALENDAR. THE ARTICLES, OPINIONS, PICTURES AND LAYOUT OF THE EAGLE EYE ARE THE RESPONSIBILITY OF THE STAFF AND DO NOT REFLECT THE VIEWS OF THE STUDENTS, THE FACULTY OR ADMINISTRATION, UNLESS SPECIFIED. THE EAGLE EYE IS FUNDED BY THE STUDENT ACTIVITY FEE AND PRINTED BY THE LOCK HAVEN EXPRESS.

ADVERTISING

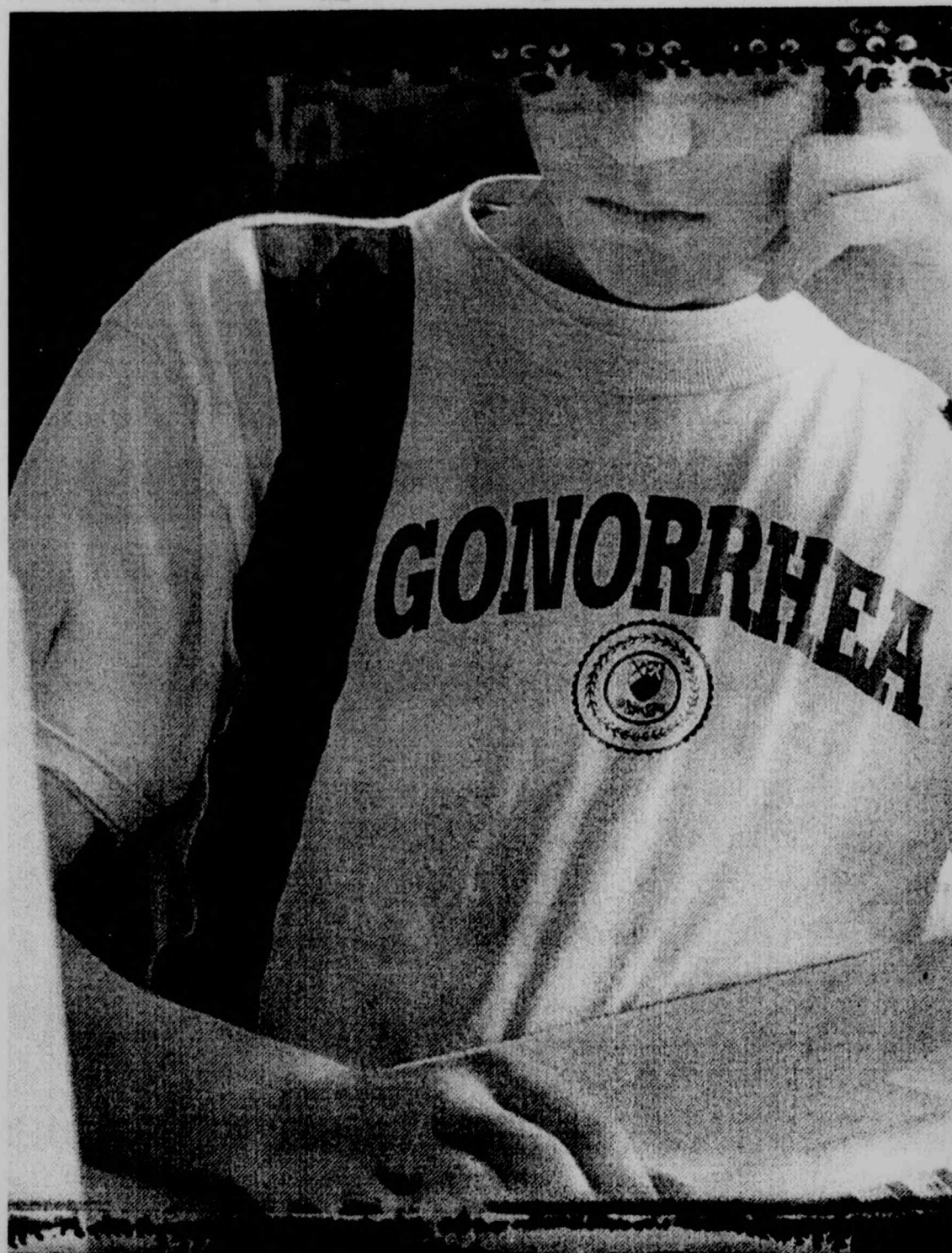
ADVERTISING INFORMATION AVAILABLE UPON REQUEST. DEADLINE FOR AS SALES IS THE FRIDAY ONE WEEK BEFORE THE FRIDAY OF PUBLICATION. PRE-MADE OR CAMERA READY ADS ARE ACCEPTED, HOWEVER OUR ADVERTISING DESIGN STAFF IS WELL EQUIPPED AND CAN DESIGN ADS AT NO EXTRA COST. PRICES FOR ADS ARE SUBJECT TO CHANGE UPON SPECIFIC REQUESTS.

CLASSIFIEDS

CLASSIFIED ADS FOLLOW THE SAME REGULATIONS, HOWEVER PERSONAL AND ANNOUNCEMENTS ARE FREE OF CHARGE AND MUST BE SUBMITTED NO LATER THAN TUESDAY BY 3PM.

LETTERS

LETTERS TO THE EDITOR ARE WELCOME. THEY MUST BE TYPE-WRITTEN AND INCLUDE THE AUTHOR'S NAME, SIGNATURE AND TELEPHONE NUMBER. LETTERS RECEIVED WITHOUT THIS INFORMATION WILL NOT BE PRINTED. DEADLINE FOR SUBMISSIONS IS TUESDAY BY 3 P.M. THE EDITOR RESERVES THE RIGHT TO EDIT ANY COPY.



12 million Americans contract STDs every year, and none of them come with a warning label. Consider abstaining from sex, or if you do engage in sexual activity, protect yourself by using a condom. Visit www.health.state.pa.us for more information about STD prevention, testing and treatment.

WE'RE THERE.

For Your Health. For Your Community.

DEPARTMENT OF
HEALTH

Comics

THE LOCKHARTS

"LEROY ALWAYS CHOOSES THE CHEAPER OF TWO EVILS."

"NOW, THAT'S REALITY TV!"

"500 CHANNELS AND WE HAVE TO RENT A VIDEO."

Better Half

"My boss snoops on my e-mail. I send you those spicy letters just to make her marriage seem duller!"

"I edited our wedding photos on the computer. I replaced your look of terror with a smile."

"Our cat is pre-approved for a dozen credit cards, but you and I just got turned down again!"

WIGAR THE HORRIBLE

"AND JUST WHERE HAVE YOU BEEN?!!"

"THE WAY HE'S STRUTTING, I'D SAY HE'S BEEN WITH A LADY FRIEND"

SUBTLE HINTS THAT YOU MAY BE HARD TO GET ALONG WITH #633:

EVEN MY IMAGINARY FRIENDS WON'T TALK TO ME...

©2001 ADAM "YOUR CLOSE PERSONAL FRIEND" GREEN

Beetle Bailey

"MAIL THIS, AND BE SURE IT HAS ENOUGH POSTAGE"

"DARN! I TRIED TO SET THE METER FOR \$1.00 BUT IT CAME OUT 14"

"NOT ANKER"

PAUL

BY BILLY O'KEEFE WWW.MRBILLY.COM

"DON'T CRY BABY. I MAY CHEAT ON MY FINALS, BUT I WOULDN'T CHEAT ON YOU, GIRL."

"MAYBE THAT'S WHY I'M CRYING, HMM?"

GO TO PAUL

fritz THIS WEEK'S EMOTIONALLY CHARGED EPISODE: "breaking up is hard to do" a guaranteed, certified, honest to goodness written and drawn by **Cayetano**

magic inkwell comic strip

THE MIND GOES NUMB WHEN FORCED TO FACE THINGS IT CANNOT GET

TURN OFF THE LIGHT PLEASE CALM THE BITTER WAVES OF DULL REGRET

after a time...

IF BUT TO LIE ONCE MORE IN YOUR INNOCENT BED...

THEN ONE DAY IT COMES TO LIGHT THE SPARK ONCE LIT NOW DEAD

LHU wins the PSAC's Dixon Trophy

Lock Haven University has won the Dixon Trophy as the Pennsylvania State Athletic Conference's most successful all-around athletics program for the 2000-01 academic year. This is the first win for Lock Haven, last finishing as high as second place in the 1999-2000 school year.

The Dixon Trophy is named after F. Eugene Dixon, Jr., former chairman of the Board of Governors of the State System of Higher Education. It has been awarded annually since 1995 to the PSAC member institution that accumulates the most points based on results of conference playoffs and/or regular-season records. Each institution's point total is calculated by adding its top six men's finishes and top six women's finishes in 20 conference sports.

Lock Haven won the trophy by tallying 117.5 points and tied the largest margin of victory in the history of the award by matching Shippensburg's 1997-98 five-point triumph.

Shippensburg University finished second, five points behind LHU, with 112.5 points and Kutztown University was third with 111.5 points. Bloomsburg (109) and Edinboro University (107.5) rounded out the top five.

"It is such a great honor for our University's athletic program to have earned this award," said Lock Haven President Craig Dean Willis. "We are all extremely proud of the accomplishments of our teams, and winning the Dixon Trophy is a much-deserved reflection on the dedication and commitment that Lock Haven's student-athletes, coaches, athletic directors, sports information and other support staff have demonstrated throughout the year."

"The entire program should be thrilled by the performance of our teams," said Lock Haven Director of Athletics Sharon E. Taylor. "It's a credit to the hard work of our student-athletes and coaches. We've targeted some areas for improvement, so if we

add that to what we're already doing, LHU should remain competitive for some years to come."

The Lock Haven program captured a league-best four conference titles as the Bald Eagles claimed the PSAC crown in wrestling, field hockey, women's volleyball and women's soccer. A number of runner-up performances aided in LHU's prominence, taking second in men's and women's track and field and women's cross country. The Haven also had the highest women's total with 65.5 points.

Over the course of the year, Lock Haven had 60 student-athletes garner All-PSAC honors with 19 of those earning all-region and/or All-America honors.

Additionally, two coaches earned PSAC Coach of the Year honors, six student athletes were awarded PSAC Rookie of the Year recognition, and one student-athlete was named the PSAC Athlete of the Year.

Bald Eagle

Scoreboard



Volleyball		Soccer	
UC San Diego Tournament	UC SD 30 30 30 - 3	#13 LHU 0 2 1 - 3ot	WV Wes. 1 1 0 - 2
First Round	Cal. State-San Bern. 3	First Half	WVW-Kristine Martensen
Cal. State-Los Ang. 3,	Lock Haven 0	Second Half	LHU- Katie Taylor
Lock Haven 0		Overtime	WVW- Martensen
LHU 26 29 30 - 0	LHU 23 23 30 - 0		LHU- Naiomi Clark
CS-LA 30 31 32 - 3	CS-SB 30 30 32 - 3		LHU- Kristi Ward
Second Round	Fourth Round		
UC San Diego 3	Lock Haven 3		
Lock Haven 0	Cal.State-Dominguez 0		
LHU 17 18 26 - 0	LHU 30 30 30 - 3		
	CS-D 22 20 17 - 0		

Summer wrestling highlights

LHU's Maney, Gilligan earn AWN all-rookie honors

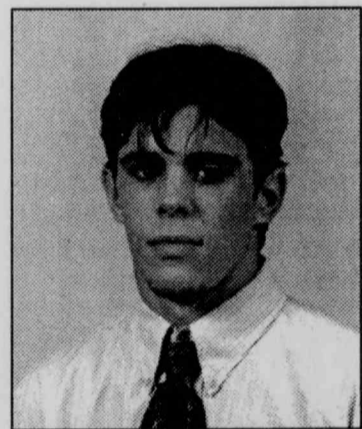
Mike Maney and Jason Gilligan, both members of the Lock Haven University wrestling program, were selected to the recently released 2001 Amateur Wrestling News (AWN) All-Rookie Team.

Maney was selected as the top rookie at 141 pounds, wrapping up his inaugural campaign with a trip to the national championships and finishing one win away from

All-America honors. He went 28-6 over the season, including a 17-3 dual meet record with a team-leading seven major decisions, and was one of two Haven grapplers to be seeded entering into the NCAA tournament. Maney helped LHU to a PSAC team title by capturing an individual conference title, was the runner-up at the Eastern Wrestling League championships, and also won an individual Mat-Town U.S.A. title. He was ranked as high as 11th in the nation during the season and earned several post-season awards for his efforts, including PSAC and EWL Rookie of the Year.

Gilligan was the fifth-ranked freshman at 157 pounds after closing out the 2000-01 season with a 14-9 overall mark.

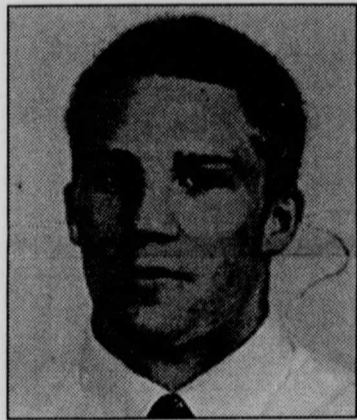
Despite battling an early season injury, the rookie bounced back to earn All-PSAC honors with a third-place finish. Gilligan made his



Jason Gilligan

first trip to the NCAA championships after receiving a wild card bid following a fifth-place performance at the EWL championships.

The Lock Haven wrestling team under the guidance of 11th year head coach Carl Poff, finished 21st at the 2001 national championships following a record-setting season in which they went 21-2 in dual meets and captured the PSAC tournament title.



Mike Maney

Wrestling recruiting class ranked among nation's best

The hard work and dedication of Lock Haven University of Pennsylvania Head Wrestling Coach Carl Poff and his staff has paid off, giving the Bald Eagle grapplers one of the strongest recruiting classes in the nation.

Lock Haven is ranked fifth

in InterMat's recently released list of the Top 25 Recruiting Classes for NCAA Division I Wrestling.

Seven state champions with a combined 11 state titles comprise the bulk of LHU's incoming class. In addition, five state qualifiers will also

join the Bald Eagle squad this fall.

InterMat's 2001 Top Recruiting Class honors went to Iowa State University, with the University of Iowa, University of Minnesota, and Oklahoma State University rounding out the top four.

Wrestling among the nation's top academic team's

The Lock Haven University NCAA Division I Wrestling team earned recognition as one of the nation's top academic teams as released by the National Wrestling Coaches Association. The Bald Eagle squad was 13th on the NWCA's Top 25 Division I Wrestling Academic Teams list, sporting a cumulative 3.024 grade point average for the 2000-2001 school year.

Leading the way this season was Princeton University, which established a cumulative G.P.A. of 3.430 over the year. Stanford

University (3.235), Boston College (3.226), Harvard University (3.223), and Central Michigan University (3.187), respectively, rounded out the top five academic teams. Lock Haven was the only ranked program from the Pennsylvania State Athletic Conference and among Eastern Wrestling League programs, was second only to #8 Cleveland State University, whose wrestlers earned a 3.136 grade point average.

A total of 11 teams listed among the nation's premier aca-

demic squads also finished in the top 25 at the 2001 NCAA Division I National Wrestling Championships, including the Bald Eagles. In fact, the LHU grapplers are the highest-ranked team academically among those select programs.

The Lock Haven wrestling team, led by Head Coach Carl Poff, finished 21st at the 2001 national championships following a record-setting season in which they went 21-2 in dual meets and captured the PSAC tournament title.

Rugby tournament set for this weekend

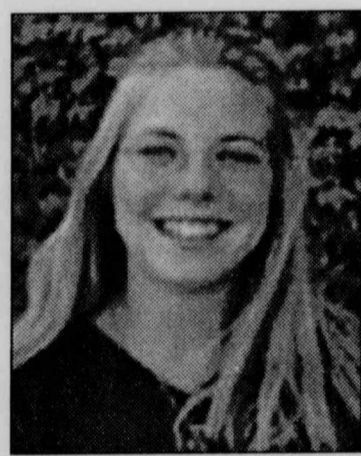
The Men's Rugby team is hosting their annual Cornfield Classic Saturday, September 1 at the West Branch Soccer Park. The tournament begins at 11 a.m. and will run until approximately 2 p.m. Featured teams are Bloomsburg, Penn State, and the LHU Alumni's. All are invited to attend.

Geissler named head assistant field hockey, head lacrosse coach at LHU

Lock Haven University Department of Athletics has officially announced the appointment of Kristen Geissler as the new Lady Eagle women's lacrosse coach. Geissler will also assume assistant coaching duties with Lock Haven's national championship field hockey team.

"We're extremely excited to have Kristen returning to Lock Haven to work with our field hockey and lacrosse programs," said Sharon E. Taylor, Lock Haven Director of Athletics. "Her experiences and accomplishments as both player and coach will be very beneficial to the student-athletes in those programs."

Geissler, a 1998 graduate of Lock Haven University, returns to her alma mater after serving as the head field hockey and women's lacrosse coach at SUNY Geneseo over the 2000-01 seasons. There, she led the Geneseo Lady Knights' field hockey squad to a runner-up finish in the State University of New York Athletic Conference (SUNYAC) and a berth to the New York State Women's Collegiate Athletic Association



Kristen Geissler

(NYSWCAA) playoffs. She guided three players to all-conference honors and two to All-NYSWCAA accolades. Under Geissler, the Lady Knight lacrosse team also advanced to the SUNYAC Championship playoffs with three athletes earning all-state status and two meriting All-SUNYAC honors. Prior to her post at Geneseo, Geissler held head field hockey and lacrosse positions at Elmira College and SUNY New Paltz.

Geissler was a standout goalkeeper for the Lock Haven field hockey team from 1994-97, earning status as an All-American and All-PSAC selec-

tion in her junior and senior seasons. In 46 games, she posted 255 saves and 20 shutouts.

Her career goals-against-average of 0.90 ranks in a tie for fifth place among all Lady Eagle keepers. Geissler was a member of The Haven's 1994 and 1995 NCAA Division II National Championship squads, and was also part of three Pennsylvania State Athletic Conference post-season tournament championships from 1994-96.

She experienced additional success as a member of the Lady Eagle lacrosse team, garnering Second Team All-America and Second Team All-PSAC honors in 1998.

"Lock Haven was a wonderful place to come to further my education, not to mention become a successful athlete," said Geissler.

"I am very much looking forward to coming back and continuing my athletic successes from the sideline instead of on the field. This is a fantastic opportunity for me to give back to two programs which have showered me with memories and good times."

VBALL

from back page

LHU	3
CS-DH	0

The Bald Eagles finally notched their first win of the season, defeating Cal State-Dominguez Hills in straight sets, 30-22, 30-20, 30-17.

Nuzum and Crouch each had 12 kills. Nuzum also added 13 digs, 3 service aces, and two blocks. Fessette contributed with 35 assists. Hackenberg provided the defense with five blocks, Warnke added four blocks.

Kelli Crouch was named to the All-Tournament team.

ATTENTION

Anyone interesting
in becoming a
sports writer con-
tact Suzie or Gregg
at x2334.

New Store!

Greatest Hits Music

over 10,000 CDs and Tapes

Music Movies Books Games

\$\$ for your Used CDs..

\$\$ for your Used Movies

\$\$ for your Used Games

101 E Main St. Lock Haven 748-7388

Eagle Hotel Annual

Hot Tub Party

Labor Day Weekend

101 East Bald Eagle St.

Lock Haven, PA 17745

(570) 748-6832

Beer Specials Every Night

Friday-DJ 9:30pm-1am
\$0.50 Wings

Saturday-Penn State Football
on Big Screen 8pm
\$0.50 Wings

Sunday-DJ 9:30pm-1am
\$0.50 Wings

Bring Your Suits

On the Avenue

Puff 6 Pack

Welcomes Back Students!

"Give a try, before you buy"

**New Full Menu

**Eat in or Take out

**Lowest Prices in Town

**Coldest Beer in Town

**Daily Specials

Phone.....748-9399 or Fax.....748-2143

BIG K

Hogan Blvd

Students, Faculty & Staff

10% off every Saturday

7am- 10pm

