

## The Education Club

Entrance Requirements in Accordance with Kappa Delta Pi

One of the outstanding educational and professional clubs on our campus is the Education Club, whose aim is "to study, experiment, and promote educational processes and to discuss present-day educational problems." As such it has constantly endeavored to stimulate the intellectual and professional interests of the college and its students. Its admission requirements are high in accordance with the requirements of the international educational fraternity, Kappa Delta Pi. Any student who is honored with an invitation to become a member of the club must be in the upper quartile of the Junior and Senior class and must show outstanding ability in his chosen field. Sophomores who show decided interest in educational problems may be admitted to the club at the end of their third quarter in school.

During the past year, members of the club have participated in many worthwhile discussions. It has also been their privilege to hear several lectures on contemporary educational problems. Early in the fall the club, together with their faculty advisers, Miss V. Coppens and Mr. A. D. Patterson, attended the conference on Education at Bucknell University. Several of the bi-monthly meetings were concerned with a discussion of the educational field from the standpoint of the kindergarten and primary majors.

Social activities during the year included an Open House Tea in the fall, and a spaghetti supper in the early spring, when Miss Belle Holaway, guest of honor, reviewed speeches heard at the Annual Con-

Continued on page 5



LEON BARR  
President, Educational Club



## BEL CANTO SOCIETY

FRONT ROW—left to right—Aldine Glossner, Gladys Shaffer, Julia Cronister, Olga Sawzig, Edna Swinehart, Gladys Williams, Vera Lyons, Nancy Kiser.  
SECOND ROW—Geraldine Ross, Thelma Baker, Mary Ellen Ringler, Leanne Dick, Evelyn Hellberg, Ruby Richards, Julia Shea, Gertrude Powell, Pearl Helges.  
THIRD ROW—Inez Dittenbach, Earleen Davis, Alice McGarvey, Ruth Eleanor Bower, Edna Livingston, Dorothy Pink, Anita Harner, Elva Stiver, Winifred Heim, Evelyn Custer.  
FOURTH ROW—Helen Homer, Mary Harvey, Anna Catherine Gullmartin, Miriam Wallace, Jean Kopenhaver, Olivia Bogar, Mary McKinley, Leah Kraemer, Dorothy Trambley, Margaret Williams.

## Bel Canto Society

The Bel Canto Society, the Girls' Glee Club, under the direction of Miss Grace Ullemeyer, of the College Music Faculty, has made rapid progress since its reorganization in the fall semester of 1933.

At present the officers of the society are: Misses Edna Livingston, Antes Fort, president; Julia Cronister, Julian, vice-president; Leanne Dick, Bellwood, secretary-treasurer; Janet Lillibridge, Smethport, point secretary; Mary Ellen Ringler, Mifflinburg, librarian; Vera Lyons, Williamsport, accompanist.

From the beginning of its reorganization the club as a unified body worked earnestly to achieve the high standards that Miss Ullemeyer so rigidly enforced. Last year, even in its infancy the society proved itself capable by presenting programs of variegated nature. However, this year the Bel Canto has reached the pinnacle of success. Not only has it acquired an honorable standing on the college campus particularly following its annual spring choral recital in which feature were Miss Ethel Law, Lock Haven, vocal soloist, and Miss Vera Lyons, Williamsport, piano soloist but also its reputation has extended to distant places where likewise its programs met with appreciative audiences. Apart from this the Choral Club accepted a request to broadcast over radio station WRAK, Williamsport.

Continued on page 8

## The Naturalist Club

In 1923 an organization was formed at Lock Haven State Teachers College with ten members, known as the Happy Harvesters. The purpose of the club was to study outdoor life.

Through the years the organization has progressed until today it is one of the most prominent organizations on the campus. The membership has increased to thirty-nine, and the name has been changed to The Naturalist Club. This year has been one of many and varied activities. Programs have included well-balanced social and educational meetings. Indoor meetings have been taken up with talks by club members and guest speakers, and the reading and criticism of nature study books. Outdoor meetings have been equally important. Hikes were taken to fields of interest where birds, flowers or trees were studied. On the hikes the Nature Trail was followed, a trail which has been cleared and marked by the members of the Naturalist Club for the purpose. Many enjoyable and delicious feeds were held at the old reservoir on the hill in back of the school.

To climax the activities of the year, Homecoming for the Naturalists was held on May 4 at McElhattan Park. Each year the Naturalist Homecoming is the biggest event of the year, and this year was no exception. Between twenty and twenty-five alumni members returned to talk once more with fellow Naturalists. Old members,

Continued on page 5

## Chi Kappa Sigma

(Dramatic Club)

We gave you the "Merchant of Venice," "Outward Bound," "The Ghost Train" and "East is West." We ask for appreciation, help and cooperation. We require talent, willingness and understanding.

Ever since clubs have existed on our Campus the Dramatic Club has been noted for her vivacity and gaiety, her position has been one of importance because of personal and group achievements; her membership has been envied. This year through common agreement the Dramatic Club enrollment has been greatly enlarged, furnishing an opportunity for more people to enjoy its privileges. Yet this year we are unfortunate in losing some of our greatest dramatists. Walter Wilkinson for four years has brought terror, sympathy, and cleverness to our audiences. His talents not only on stage but back stage will be greatly missed. His interpretations of "Gratiano," "Unker Shad," Station Master, and "Reverend William Duke," will always be remembered as outstanding events on our campus.

We also regret the loss of Beatrice Berg, whose performance in "Outward Bound" is unforgettable. Her performances for the Dramatic Club have always been gay and humorous as well as touching and thrilling. To Clarence Eld, whose excellent performance in "The Merchant of Venice," and Florence Hunt, whose portrayal of Portia are unsurpassable, as well as to Ronald Aldrich, retiring president, and Trafton Buchanan for their clever interpretations in "Outward Bound," we wish to express our sorrow that their going will mean. To Marjorie V. Dice, whose talents are envied by all

Continued on page 8



RONALD ALDRICH  
President, Dramatic Club

## COLLEGE TIMES

The College Times is published at Lock Haven State Teachers College, Lock Haven, Penna., by the Board of Editors of the College Times.

Published weekly during school year.  
Fifty cents per annum.

### BOARD OF CONTROL

Editor-in-Chief, Madelyn Faulkner  
Managing Editor, Marjorie Dice  
Make-up Editor, Edna Livingston  
Copy Editor, Lucetta McKibben  
Business Manager, Caroline Brown  
Circulation Manager, Lenore Dick  
Sports Editor, Emerson McDermott

### Reporters

James Myers, Emerson McDermott, Morrill Laubach, Inez Diefenbach, Anne Sedor, Edward Kimble and Helene Silagyi.

### Typists

Marjorie Dice, Inez Diefenbach

### Student Advisor

William Anderson

Acceptance for mailing at special rate of postage provided for in Section 1103, Act of October 3, 1917, authorized June 3, 1923.

Entered as Second Class matter November 6, 1928, at the Post Office at Lock Haven, Penna., under the Act of March 3, 1879.

MONDAY, MAY 20, 1935

## EDITORIAL

One of the phases of our school which has been developed and is developing is the extra-curricular activities. There are about twenty such organizations on our campus at the present time. They deal with music, athletics, art, foreign languages, and drama. There are three sororities and one fraternity in addition to these. Do we realize the value of these activities?

These groups, especially the Y. M. and Y. W., have been a big asset in acquainting new students with our school and making them feel that they are a part of it. One of the sororities, the Rho Omega Lambda, sponsored a scholarship to be given to a non-sorority girl from the Day Room. The Dramatic Club has presented many delightful productions for the Free Milk Fund of the Training School. All the organizations sponsor homecoming days which bring the alumni in closer relationship with the student body. Various meetings have been held which brought to our school representatives from other colleges. This creates a feeling of good will among the several schools. With such activities as swimming, horseback riding, tennis, football, track, baseball, and archery, the student body has been increased to a great extent. The members of the Naturalist Club become acquainted with the land surrounding the school through the numerous hikes they take.

Can you imagine what our college would be like if there were no extra-curricular activities? Why not all take part in them and get out of our school what we should?



### COLLEGE TIMES STAFF

FRONT ROW—left to right—Lenore Dick, Madelyn Faulkner, Caroline Brown, Inez Diefenbach.  
BACK ROW—Edna Livingston, Morrill Laubach, William Anderson, Emerson McDermott, Edward Kimble, Marjorie V. Dice.

### The Times Staff

WHO? WHEN? WHERE? WHAT? and WHY? The answer to these five questions concerning any campus event is found in the "College Times." Alpha Zeta Pi, the formal name of the organization, which publishes our school paper, "College Times," was organized in the fall of 1924. The formation of Alpha Zeta Pi centers around the interests of the college paper and as a result the organization has for its main purpose the publication of the "College Times." In the club publication, the aim is to keep the students, alumni, and others interested and informed concerning the important activities and events of campus life.

Besides aiding in the spread of campus news, the paper is used as a written report of the college history and as a field for practice to those interested in journalism. The students participating in the work are given the opportunity of learning every phase of newspaper production—reporting straight news, composing feature articles, managing circulation, administration of business, reading copy, assisting in make-up work, and editing the paper.

The group is divided into the Board of Control, consisting of the several editors and managers, and the General Staff, composed of the reporters and feature writers. Together these two sections work to produce a weekly record of college events.

### Outstanding Events During the College Year

Sept. 13—Y. W. C. A. Tea . . Big Sisters and Little Sisters  
Sept. 14—Rev. George G. Culbertson leads devotions at first chapel exercise  
Sept. 15—Y. W. C. A. and Y. M. C. A. hosts at Get-Acquainted Party  
Sept. 25—Dramatic Club enter-

### Day Room Y. W.

Dear Betsy,

Since you wrote and told me you are coming to college at Lock Haven next year, I've been so excited. I'm so glad you decided on my college.

My dear, you'll love it here. The school is just small enough so that everybody knows everyone else, which makes it much more interesting than in a large college. We have lots of fun, but we do a lot of work, too. Besides going to classes there are so many interesting clubs, societies and other organizations to join. Some of these require special talents and interest along a certain line, while others do not.

You say that you will room in the town instead of living in the dormitory. Then let me tell you about our dayroom Y. W. C. A.

It is organized separately from the dormitory group to enable the dayroom girls to belong to and participate in the Young Women's Christian Association program. This would not be possible if the dormitory and day room groups were all together because the dayroom girls must have their meetings during the lunch hour while dormitory group meets in the evening after dinner. Since a large number of the women students of our college live or room in the town or commute from nearby sections we feel that the dayroom Y. W. C. A. is an active and vital organization of the school. It helps

tains Freshmen at Tea Dance  
Oct. 4-5—Central District P. S. E. A. Convention meets at college . . . Noted educators speak  
Oct. 12—R. O. L. entertains A. S. T. and B. E. X. at social tea  
Oct. 14—Y. W. C. A. holds candle light initiation service  
Oct. 16—New Alma Mater presented in chapel  
Oct. 19—Inter-Sorority Council sponsors first Open House Tea in College Blue Room  
Oct. 20—Alpha Sigma Tau holds Hallowe'en Party for Faculty  
Continued on page 7

promote friendship and Christian ideals in our college.

Although it is a slight handicap to have to hold the meetings at noon for a half an hour when so many use that time for study or must teach, yet many worthwhile things were accomplished this past year under the leadership of the cabinet consisting of: President, Lucetta McKibben; Vice-President, Sara Mapes; Secretary-Treasurer, Kathryn Rauch. Last fall the dayroom Y. W. C. A. helped with a get-acquainted tea which was given the first week of school by the Y. W. C. A. in order to help the girls get acquainted as quickly as possible. Several warm luncheons were prepared by the Y. W. girls and the whole dayroom invited at the payment of a small sum. These proved to be very popular and were a welcome change from the usual cold lunch. During October the dayroom Y. W. C. A. held an open-house tea on a Friday for the whole school.

We also undertook two other very worthwhile projects. Three of the girls volunteered to teach the Tri-Hi-Y Bible class of the Junior High School over in the Training School for two months. A standard course of study was used and many worthwhile things discussed. Then several of the other girls offered to help a crippled girl at the Children's Home with her school lessons. Gladys has had to wear a heavy brace on her leg for a long time. This winter she fell and injured herself so that she was unable to go to school. However, she was very anxious to finish her eighth grade work. So some of our girls went to the Home and helped her with her lessons.

All of these things could not have been done so well if it had not been for the kind advice and interest of our advisors, Miss Rowe and Miss Russell.

Next year we hope to do still more in this work, and I'm sure we will if we have such new people coming in as you are. Our cabinet next year includes: President, Mary Ulmer; vice-president, Edna Leinbach; secretary-treasurer, Arlene Dunkle.

There is a State Y. M. and Y. W. C. A. conference to be held at Eagles Mere this June, from the fourteenth to the twenty-second. All of the colleges in the state may send representatives who meet and discuss problems of the college student, besides receiving Christian inspiration and fellowship from the speakers and group leaders. Our dayroom group will probably send at least one, and perhaps two representatives.

Next year we'd like to work out a Big and Little Sister plan for the dayroom similar to what they do in the dorm. That is, assign each freshman to an older girl who will be responsible for writing to that new girl before school opens, and getting her acquainted after she comes to school. So get your name for college registration early then you'll be sure to get a Big Sister.

My goodness, I didn't know I'd talked so much. Here's hoping you have a grand time this summer and come to school next fall all ready to do lots of interesting things.

As ever,  
PEG

# • SORORITIES •



ETTA MORELAND  
President, Rho Omega Lambda

## Rho Omega Lambda

The Rho Omega Lambda Sorority is one of the most outstanding organizations on the Lock Haven State Teachers College Campus. It stands high scholastically as well as socially. Rho Omega Lambda has always been vitally interested in the affairs of the college. This has been shown in various ways, the most outstanding of which was the establishment of the Rho Omega Lambda Scholarship Fund in 1934 from which a non-sorority Senior girl, for outstanding contribution to the college, receives the payment in full of her last semester college fee. The money for the fund was raised by the presentation of the play, "Miss Nelly of N'Orleans." During the past several years the sorority has been a member of the Needlework Guild of Lock Haven through its contributions of clothing cut out and made by the members of the group.

Rho Omega Lambda began the social season of 1934-35 by entertaining the other sororities at an informal tea which was given in the College Blue Room. On Homecoming last fall when several alumnae returned, luncheon was held in their honor at the Dutch Inn, Mill Hall. Favors for this luncheon were beautiful yellow chrysanthemums. Throughout the term various teas and get-togethers have been held in the Sorority Room, with a most tasty spaghetti dinner given at Miss Katherine Caprio's cabin. At the beginning of the second semester this group moved into their newly decorated and enlarged Sorority room in which the members take great pride.

The Rho Omega Lambda has petitioned for membership in the oldest National Educational Sorority, Pi Kappa Sigma, founded November 17, 1894.

The personnel of this society is:

Beatrice M. Berg	Sara Romig
Catherine Caprio	Marjorie Pfoutz
Marjorie L. Deise	Helen Gallagher
Marie Gehron	Anna M. Corson
Lucille Glossner	Leah Varner
Marian Harsch	Margaret Sherokey
Florence Hunt	Sara McClain
Ethel Law	Hilda Smith
Jane Moran	Amy Shaffer
Martha McAllister	Marjorie V. Dice
Alice McGarvey	Elizabeth Ross
Lucetta McKibben	Ruth E. Bower
Elizabeth Parson	Marian Klaer
Olive Quiggle	Helen Eyerly
Hart Slater	Helen Nichols
Isabel Welch	Mollie Buvinger
Jean Sheasley	Ann Frazier
Naomi Wentz	Nancy White
Mary J. Nichols	Ruth Hunt
Jean Helman	Carmilla Fulmer
Madeline Hettler	Maxine English

Miss Mabel-Louise Arey is the faculty advisor for Rho Omega Lambda.

The officers for the school term of 1934-35 were:

**First Semester—**  
 President . . . . . Beatrice M. Berg  
 Vice-President . . . B. Marie Gehron  
 Treasurer . . . . . Florence M. Hunt  
 Recording Secretary . . Ethel Law  
 Social Secretary . . . . Hart Slater  
 Usher . . . . . Marjorie L. Deise  
 Chaplain . . . . . Isabel Welch

**Second Semester—**  
 President . . . . . Florence M. Hunt  
 Vice-President . . . . Catherine Caprio  
 Treasurer . . . . . B. Marie Gehron  
 Recording Sec. . . . . Lucille Glossner  
 Social Secretary . . . Elizabeth Parson  
 Usher . . . . . Martha McAllister  
 Chaplain . . . . . Isabel Welch

## Beta Sigma Chi

The Beta Sigma Chi Sorority, known as the Bittersweets, is the oldest sorority of the college. It has endeavored to maintain high scholastic standing, to encourage friendship with all students in school, and at all times to uphold and maintain the high standards of the college.

During the year social events consisted of breakfasts, teas, feeds, formal dinners and dances for the members, and rushing parties for the underclassmen, including a spring garden tea, cabin party, and a formal dinner.

The Beta Sigma Chi Sorority, in closing its twenty-fourth year of existence on the campus, will become affiliated with Sigma Sigma Sigma, National Education Sorority, as the Alpha Rho Chapter. This installation with the national officers on May 17, 18, and 19, culminated the social and fraternal activities of the Bittersweet group for the year. Sigma Sigma Sigma, with whom the Bittersweets will become affiliated, was founded on April 20, 1898, at the Virginia State Normal School, located at Farmville, Virginia. Its chapter roll is limited to Teachers Colleges of first rank. Thus Tri Sigma became the pioneer on the field of the Teachers Colleges, the first to be strictly a national education sorority. The sorority has limited itself strictly to the educational field and has grown from a small southern society to a national education sorority with a membership of some five thousand in



CLARISSA WAINGER  
President, Beta Sigma Chi

thirty active chapters and as many alumnae groups, and with members living in every state in the Union and in many foreign countries.

The adjourning officers for the Bittersweet group were Clarissa Wainger, Johnstown, president; Ruth Burkett, Lock Haven, vice president; Eleanor Wood, Williamsport, recording secretary; Leah Kreamer, Pottsville, corresponding secretary; and Gretchen Dickey, Lock Haven, treasurer.

In addition to these, active membership includes: Caroline Brown, Ruth Crowley, Margaret Griffith, Dorothy Hamberger, Mary Louise Markle, Louise McEntire, Jane Mervine, Sara Quigley, and Mary Ann Roberts, all of Lock Haven; Sarah Budinger, Snow Shoe; Doris Catterton, Honesdale; Inez Diffenbach, Anne Wilson and Eleanor Wood,



FLORENCE HUNT  
President, Rho Omega Lambda

## Dramatic Club Membership

### Senior Members Who Are Leaving

Ronald Aldrich—President 3-4  
 The Ghost Train  
 Outward Bound  
 Trafton Buchanan—Secretary 2-3, 3-4  
 Outward Bound  
 East is West  
 Marjorie V. Dice—Treasurer 3-4  
 Outward Bound  
 The Merchant of Venice  
 Clarence Eld—Vice-President 3-4  
 The Merchant of Venice  
 Wanda Brown  
 Florence Hunt  
 The Merchant of Venice  
 Outward Bound  
 Walter Wilkinson—President 2-3  
 The Merchant of Venice  
 Ol' Days in Dixie  
 The Ghost Train  
 Outward Bound  
 Mis' Nellie of N'Orleans  
 Clarence  
 East is West  
 Doris Catterton  
 Stage set for "East is West"  
 Pearl Heiges  
 Ellen Louise Rooke  
 Frank Kotchin

### Remaining Members

William Anderson  
 East is West  
 The Ghost Train  
 Marie Gehron  
 Mis' Nellie of N'Orleans  
 Marian Harsch—Vice-President 35-6  
 The Ghost Train  
 John Yon—Treasurer 35-6  
 Outward Bound  
 Mis' Nellie of N'Orleans  
 The Ghost Train  
 Leah Varner  
 Joseph Freedman—Secretary 35-6  
 The Ghost Train  
 Outward Bound  
 East is West  
 Katherine Caprio—President 35-6  
 The Ghost Train  
 Mary Ulmer  
 Lucetta McKibben  
 The Ghost Train  
 Anna Margaret Corson  
 East is West  
 Hart Slater  
 Mis' Nellie of N'Orleans  
 Nancy Kiser  
 Edward Kimble  
 Lucille Orlin  
 Sara Buddinger  
 Dorothy  
 Hamberger  
 Amy Zaner  
 Jane Moran  
 Helena Silagyi  
 Jack Livingston  
 Charles Pierson  
 Harris Lipez  
 Cleo Howe  
 William Mahaffey  
 Madelyn Hettler  
 Madelyn Miller  
 Carmilla Folmer  
 Rito Pohl  
 Ann Frazier  
 Jean Lepley  
 Margaret Sherokey  
 Elizabeth Ross  
 Meriam Wallace  
 Emerson  
 McDermott  
 Nancy White  
 Leonore Dick  
 Evelyn Williams  
 Dorothy Eder  
 Martha Holbrook  
 Helen Eyerly  
 Julia Cronister  
 Jean Kunes  
 Mary Hammer  
 Marguerite  
 Wright  
 Helen Nichols  
 Harter Vonada  
 Pauline Barrows  
 Maxine English

Williamsport; Lydia Furst, Cedar Springs; Margaret Harman, Mill Hall; Pearl Heiges, Lemoyne; Jean Kunes, Blanchard; Edna Leinbach, Vicksburg; Mary McCoy, Smethport; Mary Ellen Ringer, Mifflinburg; Margaret Rohrbaugh, Beech Creek; Helena Silagyi, Portage; Rebecca Williams, Holidaysburg; and Miss Catherine Geary, Hamburg, faculty advisor.

## Alpha Sigma Tau

The Alpha Sigma Tau Sorority was founded in 1899 in Ypsilanti, Mich. The Zeta Chapter of the Alpha Sigma Tau began its career on our campus in 1921 and until this spring was the only national sorority on our campus. It has been very active throughout the intervening years, having as its biggest social event of each year, Homecoming, when our alumnae sisters come back to visit us. We entertain them at a tea in the afternoon and a formal banquet in the evening. Older sisters are soon acquainted with the new ones and new ideas are discussed for bettering sorority standards. Our Homecoming in November, 1934, was held on Founders' Day, which is an annual festival.

Other outstanding activities of Alpha Sigma Tau were a ghost party on Hallowe'en at the old reservoir in honor of the faculty, a bridge tea, birthday parties, hankerchief showers, a kid party, a spider party, and the usual "feeds." This year we also had the pleasure of entertaining our National president, Mrs. Stoeble, who was elected to that office last summer at our biennial convention held in Cleveland, Ohio, and to which Zeta Chapter sent representatives. At the convention this year, held on August 28, 29, 30th, Zeta was honored by having one of its alumnae members, Gwendolyn Glise Ridderhof, now of Detroit, Mich., elected to the office of National treasurer.

In addition to our student members, our Zeta Chapter has approximately two hundred alumnae members, scattered throughout the state, some of whom have organized themselves into alumnae chapters such as the Johnstown, Altoona and Williamsport Chapters, and to which any graduate of the Alpha Sigma Tau sorority is eligible. Such alumnae organizations help to continue the pleasant experiences of school life that are so often discontinued after graduation.

## The Art Club

The Art Club has just completed the first year in its reorganization plan to build up activities. Using the educational theory that the creative impulse has been stilled in adult age through convention, formal schooling, and mechanical living as a basis the club has sponsored art activities that will aid the members in finding a medium for expression.

Two exhibits from the American Federation of Art were studied as a stimulation to attempt at expression. Instructions in the fundamentals of use of different media such as charcoal, crayon or watercolor were given. With this basis the members were able to put their reactions on paper. The appreciation and understanding of works by recognized artists was not substituted for individual expression.

Craft and practical work including Christmas cards and gifts, and Homecoming posters was also done under the supervision of Miss Dubois, instructor of art and advisor of the club. The officers of the club this past year were: Doris Catterson, Honesdale, President; John Barry, Lock Haven, Vice-President; Leah Kraemer, Pottsville, Secretary; and Arlene Dunkle, Halifax, Treasurer. Senior members include: Jean Smith, Watrous; Anita Harner, New Alexandria; Alice Arnold, Hollidaysburg; Arlene Dunkle, Halifax; Ellen Harding, Williamsport; Kathryn Caprio, Lock Haven; Lee Kipp, Hooversville; Marian Gentzel, Tyrone; John Barry, Lock Haven; William Griffith, Lock Haven; Anne Gilmartin, Renovo; Anne Wilson, Williamsport; Eleanor Wood, Williamsport.

After the initiation service for new members the annual banquet was held at the Dutch Inn. New officers elected at that time were:

John Barry—President  
Leah Kraemer—Vice-President  
Hazel Boyer—Secretary  
Caroline Brown—Treasurer  
New members initiated were:  
Esther Anderson ..... Smethport  
Hazel Boyer ..... Selinsgrove  
Olivia Bogar ..... Port Trevorton  
Caroline Brown ..... Lock Haven  
Franklin Courter ..... Blanchard  
Continued on page 5



DORIS CATTERSON  
President, Art Club



## FRENCH CLUB

FIRST ROW—left to right—Edward Kimble, Morrill Laubach, Franklin Courter.  
BACK ROW—Catherine Pipes, Stella Wenker, Beatrice Berg, Dr. Vickery, faculty advisor, Rebecca Confer, Lois Long, Julia Cronister, Mabel Burd, Sarah Moran, Cleo Howe, Ruth Burkett, Marian McCloskey.

## The French Club

### Le Cercle français au Collège se Nomme en l'Honneur des Gens de Lettres qui s'y Réunissaient

Vers le commencement de dix-septième siècle, il fut organisé par une jeune marquise parisienne un salon qui, en peu de temps, devint le fameux salon de Rambouillet. Cette jeune marquise, ennuyée de l'intrigue et de la grossièreté de la Cour française, assembla autour d'elle les artistes et les gens littéraires de France. Elle fut pleine de bonté et sans prévention; aussi elle fit un accueil cordial au même temps aux princes et aux pauvres écrivains. Son salon effectua un grand avancement dans la position des écrivains française. Les buts des habitués du salon furent le développement de la conversation comme un art fin, et l'établissement d'un modèle d'expression claire et compétente.

L'année passée quelques étudiants de français ont organisé un cercle français, qu'ils ont nommé en l'honneur de ce salon célèbre, parce que les buts de la Société sont a peu près les mêmes que ceux du salon. On admet comme membres tous les étudiants du Collège qui s'intéressent au française. On se réunit régulièrement deux fois par mois, et plus souvent s'il plait au membres de le faire; surtout pour une soirée sociale. Déjà la société s'est réunie chez M. Vickery, Conseiller de la Société de la part de la Faculté. On a eu une soirée agréable en dansant et en jouant aux cartes. Tout à l'heure il aura, lieu un piquenique dans le bois.

Récemment on a arrangé pour avoir des correspondants en France, et les lettres feront un sujet agréable aux réunions. Peut-être il ne sera pas sans intérêt d'en donner une liste. Les voici: André Glande et Narcisse Janssen, Ecole moyenne de l'Etat de Garçons, Huy, Belgique; Paul Gaud, Collège de Garçons, Melun, Seine et Maine, France; André Rigouste et René Delfieux, Collège Champollion, Figeac, Lot, France; Georges Clavel, Ecole primaire supérieure, Elbeuf, Seine inférieure, France; G. Pillet, Lycée de Garçons, Chambéry, Savoie, France; Juliette Chausse, Ecole primaire supérieure, St. Etienne, France; Marthe Avanturier, Ecole pratique des Filles, St. Etienne, Loire, France;

Continued on page 7

## Association for Childhood Education

The Lock Haven State Teachers College Student Branch of the Association for Childhood Education was organized in the spring of 1926. Since that time it has maintained regular meetings, usually twice each month, and has sent delegates to annual conventions of the National Association at New Haven, Conn., Grand Rapids, Mich., Rochester, N. Y., Memphis, Tenn., Cleveland, Ohio, and Washington, D. C. In Washington, D. C., our student representative was asked to speak at a Branch Conference.

The work of our branch has been largely of a practical nature. We have bought from the Superintendent of Documents in Washington hundreds of bulletins regarding the advantages of kindergarten education. These we have distributed through our state, believing that popular intelligence regarding the worth of the kindergarten will lead eventually to a popular demand for its inclusion in the public schools.

We have purchased about twenty-five books for the use of the children in our training school, and several others, including bound volumes of the Childhood Education magazine, as additions to the college library. This past year we purchased one of Rand-McNally's best maps of the United States and a standard globe for the use of the primary department in our training school.

This past year our organization was encouraged to express itself in print and our Childhood Education bulletin was the outcome. The articles were written by student members of the A. C. E., examined by a student editorial committee, and the publication financed by funds accumulated by a series of efforts at money-making.

Probably the outstanding thing accomplished by the A. C. E. this year was having Miss Julia Wade Abbott here to visit and speak. Miss Abbott was formerly National President of the A. C. E. and a member of the Bureau of Education in Washington and is now Supervisor of

Continued on page 7

## Delta Rho Beta

(Only College Fraternity)

The Delta Rho Beta Fraternity is, comparatively speaking, a new organization. Prior to its existence there was among the dayroom boys an organization known as the Derbies. This group failed to meet the demands of the day students because it was not symbolic of the true day-room spirit. Therefore, on February 21, 1933, a meeting of the day-room boys, was held to remedy the situation. After much discourse among the fellows and the faculty advisors, a new organization was evolved; namely, the Delta Rho Beta Fraternity. This new organization was based upon the ideal of sportsmanship, loyalty, scholarship, athletic ability, clean morals, and college spirit. Its birth marked a stepping-stone to better things in the day-room.

During the remainder of 1932 and of 1933, the Deltas were very active. Stag banquets, smokers, and a dinner dance were held by them for alumni, friends, and faculty. These events proved to be so successful that practically the same program was carried out during the past terms of school.

The Deltas have continued to hold a series of smokers which have won the approval of both faculty and alumni. The annual dinner-dance is usually held in the month of May and each year surpasses that of the previous year in all respects. Extensive preparations are made to take care of the large number of alumni and invited guests who attend.

During the second semester of this school term a group of loyal and worthy members of the freshman class were admitted to the organization. These members underwent a period of initiation and were then formally admitted to the organization.

Twelve Deltas will graduate with this year's Senior Class. The fraternity extends a hand of congratulation and wishes them well on their prospective careers. They are: Elwood Rohrbaugh, Robert Hunter, Frederick Rinn, Paul Mills, Jack Bryerton, Ray Oberheim, Glenn Dunlap, James Burk-

Continued on page 5



ELWOOD ROHRBAUGH  
President, Delta Rho Beta



CLARENCE ELD  
President, Y. M. C. A.

**Young Men's Christian Association**

Being the oldest and one of the largest extra-curricular organizations on the campus the Young Men's Christian Association is a positive factor in the character building program of our college. Each year its members select leaders to carry on this work and to keep in touch with other schools which are attempting to carry on a similar program. During the past year the Y. M. C. A. has sponsored with the Y. W. C. A. a Get-together Party, Hallowe'en Dance, and the Intercollegiate Cabinet Training Conference to which six colleges sent a total of sixty-seven delegates. Lock Haven has been well represented at the State Y. M. C. A. Conference in Gettysburg and the Spring Conference at Albright College, in Reading. Leaders for the past year were:

President ..... Clarence Eld  
Vice-President ..... Wilmer Dressler  
Secretary ..... Walter Wilkinson  
Treasurer ..... Reuben Salada

Committee Chairmen—  
Trafton Buchanan  
Ronald Aldrich  
Stanley Sady  
James Finn

For the year 1935-36—  
President ..... Reuben Salada  
Vice-President ..... Lee Moyer  
Secretary ..... James Brown  
Treasurer ..... Harvey Newman

**EDUCATION CLUB**

Continued from page 1

vention of Deans in Atlantic City. The year's work will end with the initiation of new members and a club picnic.

New officers, elected at the first May meeting, are: Anne Wilson, Williamsport, and Franklin Courter, Beech Creek, who will each serve as leader of the club and as vice-president for a semester; Eleanor Wood, Williamsport, Secretary, and Edward Kimble, Renovo, Treasurer. The retiring officers include Leon Barr, Westport, President; Lucetta McKibben, Lock Haven, Vice-President; Isabel Welch, Lock Haven, Secretary; and Elwood Rohrbaugh, Beech Creek, Treasurer.

Active members of the club include:

Leon Barr	Reuben Salada
William Bowes	Esther Schaefer
Maude Brungard	Henry Stehman
Doris Catterson	Howard
Franklin Courter	Underwood
Joseph Freedman	Clarissa Wainger
Jerome Haagen	Frederick Rinn

**DELTA RHO BETA**

Continued from page 4

hart, Calvin Hamberger, Henry Stehman, George Moon, and Anthony Yost.

The membership of the organization is comprised of forty-three active members. The personnel includes: President, Elwood Rohrbaugh; Vice-President, Robert Hunter; Secretary, Eugene Nuss; Treasurer, Jack Bryerton; Sergeant-at-Arms, Ray Oberheim, and a newly organized office of Chaplain, with Frederick Rinn filling the position.

Following are the members of the organization: John Barry, Robert Gallagher, Lawrence Beck, William Bowes, Harold Courter, J. Austin Burkhardt, Jack Bryerton, William Clark, Franklin Courter, Glenn Dunlap, Joseph Friedman, Calvin Hamberger, Robert Hunter, Robert Lowe, Fred Ingraham, Edward Kimble, Fred Maneval, Emerson McDermott,

**NATURALIST CLUB**

Continued from page 1

new members, and alumni, forming a crowd of about sixty people, joined together for a day of fun and fellowship. Almost every outdoor game imaginable was played and enjoyed by all. When the call for dinner was sounded a mad stampede of hungry young men and women rushed to tables and devoured immense amounts of hamburgers, potatoes, beans, and strawberry shortcake. After the dinner was over and we were all on our way back to school again, everyone agreed that this year's Homecoming was the best yet.

It is safe to say that the Naturalist Club is one of the most desirable and active clubs on the campus, and will continue to be more so each year. We are proud to announce that our president for the first semester in 1935-36 is William Anderson. To "Bill" we wish a semester's work more suc-



**NATURALIST CLUB**

FIRST ROW—left to right—Reuben Salada, Evelyn Williams, Trafton Buchanan, Hart Slater, Mr. Ulmer, Nancy Kiser, Louise McEntire, Helena Silagy.  
SECOND ROW—Etta Moreland, Eugene Nuss, Robert O'Gara, Paul Breen, Jean Smith, William Anderson, Aldine Glossner.  
THIRD ROW—Pauline Barkhuft, Mary Ulmer, Winifred Heim, Clarence Eld.

Paul Mills, George Moon, Wayne Myers, Charles Emery, Emerson Packard, Ray Oberheim, Eugene Nuss, Frederick Rinn, Elwood Rohrbaugh, Dean Shroat, Henry Stehman, Howard Underwood, Harter Vonada, Victor Williams, Anthony Yost. The newly initiated members are: Jack Yohe, Mike Pagnotto, Jack Livingston, Charles Pierson, Lynn Eason, Donald Lytle, Oliver Kling, Paul Frantz, and Earling Hauge.

The faculty advisors are: Mr. C. M. Sullivan and Mr. S. J. Smith.

The college may well be proud of this organization of young men. A glance through the athletic and social rosters of the school indicates the important place held by them in school activities along with the high scholastic attainment achieved by them.

Margaret Harman	Eugenia Williams
Edward Kimble	Isabel Welch
Ethel Law	Evelyn Williams
Sara Mapes	Margaret Williams
Lucetta McKibben	Rebecca Williams
Eugene Nuss	Victor Williams
Sarah Quigley	Anne Wilson
Richard Rathgeber	Robert Breth
Elwood	Eleanor Wood
Rohrbaugh	Walter Wilkinson

cessful than has ever existed before.

**CLUB OFFICERS—1934-35**

**First Semester—**  
Clarence Eld ..... President  
Hart Slater ..... Vice President  
Trafton Buchanan ..... Secretary  
Reuben Salada ..... Treasurer

**Second Semester—**  
Trafton Buchanan ..... President  
Leah Kraemer ..... Vice President  
Jean Smith ..... Secretary  
Etta Moreland ..... Treasurer

**NATURALIST CLUB ROLL**

<b>Old Members</b>	<b>New Members</b>
Ronald Aldrich	Leaone Dick
Wm. Anderson	Pierson Hausner
Pauline Barkhuft	Evelyn Hallberg
Paul Breen	Clee Howe
Trafton Buchanan	Roy Kress
Clarence Eld	Edna Leinbach
Aldine Glossner	Dorothy
Winifred Heim	Lillibridge
Nancy Kiser	Jack Livingston
Marion Klaer	Jane Mervine
Leah Kraemer	Helen Nichols
Etta Moreland	Marjorie Pfoutz
Eugene Nuss	Mary E. Ringler
Louise McEntire	Ellen Louise Rook
Robert O'Gara	Joe Shevoek
Mary A. Roberts	Nancy White
Reuben Salada	Ashley Woolridge
Hart Slater	
Jean Smith	
Mary Ulmer	
Naomi Wentz	
Evelyn Williams	



ELLEN LOUISE ROOKE  
President, Y. W. C. A.

**Young Women's Christian Association**

The Y. W. C. A., with one of the largest memberships on the campus, has also the distinction of being one of the oldest organizations. Its meetings, held each Wednesday, serve as a forum where interested young people meet in fellowship to discuss youth's problems and problems current in the Christian World. Various interesting programs are presented at the meetings by speakers, special music, or poetry groups.

One of the interesting projects of the group is the sponsoring of the Big and Little Sister movement which provides an upper-classman for each freshman girl, so that she may feel at home upon her arrival at college. One of the most noteworthy undertakings of the present year was the Seminar organized by the Y. M. C. A. and the Y. W. C. A. At this meeting Lock Haven was host to Y representatives from neighboring colleges. Service work at the children's Home gives the girls an opportunity for work outside the college. Various school parties are sponsored by this organization throughout the school year. The Y. W. C. A. is regarded as one of the most active and valuable groups on the campus.

The newly elected officers for next year are:

President ..... Nancy Kiser  
Vice-President ..... Eleanor Wood  
Treasurer ..... Helen Eyerly  
Secretary ..... Clee Howe

**OFFICERS**

President ..... Ellen Louise Rooke  
Vice-President ..... Evelyn Williams  
Secretary ..... Ann Wert  
Treasurer ..... Althea Troxell

**ART CLUB—from page 4**

Layah Fromm	Lock Haven
Margaret Griffith	Lock Haven
Edith Greaser	Altoona
Mary Hand	Lock Haven
Helen Kohler	Hughesville
Virginia Hand	Lock Haven
Mary McKinley	Brookville
William Mahaffey	Williamsport
Helene Silagy	Portage
Margaret Pelton	
Amy Shaffer	Holsopple
Julia Shea	South Fork
Edna Swinehart	Pottstown
Olga Sawzik	Stoyestown
Belle Isle Stoner	Bedford Valley
La Wave Underwood	Lock Haven
Margaret Wells	Pottstown
Marguerite Wright	Montoursville
Eugene Nuss	Farwell
Dorothy Schmidt	Munson

## Sports for '35-'36

The men of the college will have their athletic program divided under three separate organizations—Intercollegiate games, Intramural tournaments, and Required work. It is expected that in all three fields there will be an even greater number of games and sports to choose from than the present full program.

### Intercollegiate Contests

Starting with football in the fall our prospects for success in most sports seem splendid. Only three members of last year's football squad will be lost by graduation. With the experience gained last fall when they won five of the last six games the squad which was composed mostly of freshmen should be able to continue the splendid record of the past Lock Haven teams. We have a splendid chance to add another Teachers College Championship to the many which we have won in recent years. The schedule of home games is especially attractive with California and Indiana both here at the start.

Basketball also should show an improvement. Only one player from the starting line-up will graduate and the others should get off to a good start as they have mastered a new system of play and the many freshmen on the squad have started to team up well. Inexperience, which cost us many games last season, should not be a handicap next year.

It is expected that Boxing will be added as an Intercollegiate sport after a year's trial as an Intramural one. The final bouts for the College Championships in the various weights showed that we have some excellent material.



J. WYNN FREDERICKS  
Coach



S. DARE LAWRENCE  
Trainer



### VARSITY CLUB

FIRST ROW—Robert Hunter, Trafford Buchanan, George Moon, Clarence Eld, Ray Oberheim.  
SECOND ROW—William Hoderick, Jack Yohe, Leonard Johnsonis, Maynard Lingenfelter, Joe Shevock.  
THIRD ROW—George Prethy, Richard McCloskey, Charles McDermott, Edward Hochrein, Ronald Aldrich, James Myers, Ronald Myers.  
FOURTH ROW—John Gales, Tom Conrad, Jack Yokemick, Mike Haddad.

## The Varsity Club

### OFFICERS

President ..... James Myers  
Vice-President .... Robert Hunter  
Secretary ..... Clarence Eld  
Treasurer ..... George Moon

In reviewing the activities of this club during 1934-1935 it was found that the club, which is composed of all letter men of the college, has had a successful year.

While football was in the air the organization undertook the job of printing and disposing of the programs for the different home games. Each week's program was arranged differently and proved quite "saleable" at the gate.

The Homecoming Day dance was another outstanding achievement and the financial success that attended this event was unequalled this year.

As in previous years the Varsity Club awarded sweaters to Seniors. In addition to these awards the club this year, for the first time in history, purchased additional sweaters for its underclassmen.

Next year the club hopes to reward all members of the club, including freshmen for their part in furthering athletics in this college.

Tentative arrangements have been made for meets with one of the Penn State teams and others may be added.

Track should be one of our most successful sports next year. The experience gained by the Freshman group which composes this year's squad plus the services of several outstanding stars who are ineligible this year should give Lock Haven a team which will do splendidly in both dual meets and in the Teachers College Championship.

Both Baseball and Tennis will be very hard hit by graduation; consequently it is difficult to pre-

dict our prospects in these sports until the new material has been seen. In both sports, however, an attractive schedule has been arranged.

### Intramural Sports

The Intramural Program will be expanded and made more interesting than ever. A Fall Tennis championship in both singles and doubles will be played in addition to the annual College Championship in the Spring.

The Basketball League has always been one of the most popular activities and it will be continued as usual with a large number of teams entered.

The annual Boxing Championships will be held and a Wrestling Tournament will be added this year.

It is hoped that Badminton and Volleyball Tournaments can also be organized.

In all the Intramural Tournaments the winners will receive rewards in the form of silver trophies suitable for each sport.

### Required Physical Education

The class work in Physical Education will again feature a program of games and sports suitable for the season. The Freshman class will have Touch Football and Soccer in the Fall; Volleyball, Badminton, and Boxing in the Winter; and Softball in the Spring.

The Sophomore group will have Tennis in the Fall; Basketball, Wrestling and Tumbling in the Winter; and Track and Archery in the Spring.

Other sports will be added to this program from time to time.

### Women's Athletic Association . .

The participation of W. A. A. members is recorded in terms of point credits, with positions of leadership and honors awarded for athletic achievement contributing to this record. The derivation of the word "athletics" points to the public recognition of excellence in

Continued on page 8

## Women's Ath. Assoc.

The Women's Athletic Association of Lock Haven State Teachers College was founded in the fall of 1928, the first organization on the campus to establish a definite and effective link between academic and extra-curricular activities. Since this time, the entire women's sports program, with its ramifications into the fields of natural, folk, clog, and tap dancing, has become the joint responsibility of faculty advisor and student committees; while the most recent step has been to make student leadership of these activities in itself a recognized activity carrying point credit in the association.

A sketch of the growth of women's athletics at Lock Haven State Teachers College takes us back some thirty years ago, when women's activities were in no less capable hands than those of Miss Gertrude Colby, who left the Lock Haven faculty to do pioneer work at Columbia University in the field of natural dancing. Within the past decade, and prior to the organization of this association, women's athletics were successfully conducted under the guidance of the directors of physical education for women, who brought to this campus the athletic traditions and inspiring influences of Sargent, Wellesley, Vassar, and Columbia. Our last women's inter-mural contest was held in 1926, when Lock Haven Normal School, with a team coached by Miss Maloise Sturdevant Dixon, who is now our physical education director, won from Altoona, the season's championship high school squad. Following this victory, Lock Haven led the state teachers' colleges in supplanting the outworn scheme of varsity athletics for a dozen "stars" with a program more nearly approaching the newer ideal of "a team for every girl and every girl on a team."

Look in Adjoining Column



"SOL" WOLFE  
Assistant Coach

## Shakespeare Club

Wearing a flowing black bow tie, a volume of Shakespeare under one arm, at any occasion being able to give some quotation, characterizes the short period of pledging of the Shakespeare Society. This organization originated over fifty years ago. Debating was the main feature of the club. The members also published a club paper. Many outstanding persons of the school were in the club and have later been associated with other schools.

Club meetings are scheduled every other week. Various types of programs are arranged. With the help of the advisors, Dr. Rude and Dr. Vickery, we hope to accomplish a great deal next year.

During the year the club had several social activities. The Christmas parties at Dr. Rude's home are always remembered by the participants. The last event of the year is the annual banquet at which the new members are initiated. As the expenses of the club are few, the fees are relatively small.

The membership for this year included the following persons:

Maude Brungard	Lucile Orlin
Austin Burkhart	Jane Pray
Chester Estep	Stanley Sady
Pearl Heiges	Evelyn Williams
Clee Howe	Gladys Williams
Jean Kopenhaver	Rebecca Williams
Helen McCreary	John Yon
Louise McEntire	Reuben Salada
Sara Mapes	Leonore Dick

## FRENCH CLUB

Continued from page 4

Renée Chatenisse, 340 Rue de Ru-eil, Colombes, Seine, France.

Le bureau sera nommé tous les ans. Il consiste d'un Président (à présent, M. Edward Kimble), d'un Vice-Président (à présent, Mlle Catherine Pipes), d'un Secrétaire-Trésorier (à présent, M. Morrill Laubach), et d'une Présidente sociale (à présent, Mlle Ruth Burkett).



REBECCA WILLIAMS  
President, Shakespeare Club



## COLLEGE BAND

FRONT ROW—left to right—Jean Sheasley, Amy Shaffer, Winifred Heim, Hazel Boyer, Maude Brungard.  
SECOND ROW—Walter Wilkinson, Jack Livingston, Glenn Dunlap, Frederick Rinn, Jack Bryerton, Harter Vonada.  
THIRD ROW—Wayne Myers, Kenneth Krantz, Paul Frantz, Oliver Kling, Wayne Suder, Franklin Courter.  
FOURTH ROW—Angelo Muro, Mr. George Lehman.

## College Band

The Teachers College Band, until recent years, has been of minor importance as a school organization, but now is fast becoming a noteworthy musical group. Any person playing a musical instrument of suitable nature is eligible for membership.

The appearance of the band last fall in the new uniforms has greatly heightened the interest of the student body as well as the band members. The music of the band added greatly to the spirit of the football season, as music adds to the well-being of any gathering. A school is always very proud of a good football team. We should like to see students of a sufficient number become interested in the work of the band, that we might have an organization which the administration and student body can be proud of.

Members of the band:

Jack Livingston	Angelo Muro
Jean Sheasley	Kenneth Frantz
John Yon	Harter Vonada
Glenn Dunlap	Frederick Rinn
George Bielefeld	Howard Underwood
Wayne Suder	Moreland Shrock
Jack Bryerton	Amy Shaffer
Elwood Rohrbaugh	Hazel Boyer
Franklin Courter	Calvin Froebel
Lynn Earon	Oliver Kling
Maude Brungard	Winifred Heim

## Outstanding Events During the College Year

Continued from page 2

Oct. 23—Freshman class elects officers  
Oct. 27—Y. W. C. A. and Y. M. C. A. entertain school at Hallowe'en Party  
Oct. 30—Mr. Henry Klonower addresses student body in chapel  
Nov. 3—Homecoming Day . . . Varsity Dance . . . Game with West Chester  
Nov. 9—French Club organized  
Nov. 9—Day Room Y. W. C. A. holds second Open House Tea  
Nov. 23—Siberian Singers enter-

## College Orchestra

The College Orchestra furnishes music for a great many college functions. It plays for the majority of Dramatic Productions, for Commencement, for Baccalaureate service, and for occasional meetings outside the school. Membership in the orchestra is open to all students playing an orchestral instrument, and who are interested in this type of work.

Members of the orchestra:

Jean Sheasley	Clarissa Wainger
Kenneth Frantz	Margaret Delaney
Moreland Shrock	Bertha Sharer
Amy Shaffer	Pauline Barkhuff
Elizabeth Heim	John Yon
Frederick Rinn	Jack Livingston
Oliver Kling	Mary Ulmer
Wayne Suder	Anna M. Corson
George Bielefeld	Howard Lamey

tain student body at concert  
Nov. 27—Dramatic Club holds Open House with play, "Outward Bound"  
Dec. 8—Inter-Sorority Dance  
Dec. 14—Sophomore Class holds Open House Tea  
Dec. 15—Annual Sophomore Hop . . . Joe Vannucci  
Dec. 17—Annual Football Banquet  
Dec. 19—R. O. L. presents Scholarship Award to Miss Sarah Mapes  
Dec. 20—Holiday Dance . . . Faculty entertain  
Dec. 21—Freshmen Hold Open House Tea  
Jan. 4—"Times" Staff holds Open House Tea  
Jan. 11—Orientation Class holds Open House Tea  
Jan. 15—Richard Kean, foremost character actor, appears on second number of Artists' Course  
Jan. 17—Leonard Johnsons and Joe Shevock awarded positions on All Teachers College Team  
Jan. 25—Art Club holds Open House Tea  
Feb. 8—Delta Rho Beta holds Open House Tea  
Feb. 12—Women's Athletic Association sponsors Annual Stunt Night  
Feb. 15—Naturalists hold Open

## Association for Childhood Education

Continued from page 4

Kindergartens in the city of Philadelphia. We entertained Miss Abbott at a tea, then at a dinner at the Fallon Hotel, after which the public as well as the college students were privileged to hear Miss Abbott lecture on "The Place of the Kindergarten in Modern Education."

At our meetings our business comes first, then we have some form of intellectual or cultural entertainment by faculty members and townspeople, as musicales, tourist talks, art exhibits, etc. Nor is our group always so serious-minded, as is clearly seen in our picnics and parties.

The organization is open to any member of the Kindergarten-Primary department, without any other entrance requirement, except dues of 25c per semester.

OFFICERS OF A. C. E.—1934-'35  
Pres. . . Naomi Wentz, Lock Haven  
Vice-Pres. . . Jean Smith, Watrous  
Sec. . . Jean Kopenhaver, Norristown  
Treasurer, Marjorie V. Dice, Muncy

### House Tea

Feb. 16—Annual Senior Ball . . . Bill Bottidorf . . . evening gowns and tuxes  
Feb. 25—Junior Class holds Open House Tea  
March 1—Senior Class holds Open House Tea  
March 6—The Morgan Trio  
March 8—Dramatic Club holds Open House Tea  
March 13—A. C. E. sponsors Collector's Luck  
March 15—Day Room Girls hold Open House Tea  
March 28—Miss Julia Wade Abbott lectures at College  
March 29—Y. W. C. A. holds Open House Tea  
April 5—A. C. E. holds Open House Tea  
April 6—Dramatic Club Banquet  
April 12—Annual Spring Glee Club Concert  
April 17—Annual Spring Festival  
April 27—Annual Junior Prom . . . Ivan Faux . . . receiving line, rhythm, and rhapsody  
May 4—Naturalist Homecoming . . . many alumni return



NAOMI WENTZ  
President, Assoc. Child. Education

### Women's Student Gov.

The Women's Student Government Association is composed of all women living in the dormitories. The executive and legislative powers of the association are vested in a Student Council consisting of members elected by the Association. The purpose of the Association is to direct the management of all matters concerning the conduct of dormitory students in their college life that are not academic in nature.

This year the group will end its work by entertaining girls from Bloomsburg State Teachers College, who acted as hostesses to girls representing our group in an exchange of visits. During the year the organization has also sent representatives to the Central District meeting of the Pennsylvania Association of College Students at Bloomsburg and to the Pennsylvania Association of College Students Convention at Penn State. This group was instrumental in having us join the association.

Other constructive work was done within the group. A committee elected from the group supplemented the council in revising the rules and privileges. At all times the association has served as the means of control and the direction of the management of all matters concerning dormitory students and their conduct.

The activities, although non-academic, were more governmental than social or productive. The major social event was the Open House Tea at which the representatives to the Forensic League Contests and the faculty and students were guests.

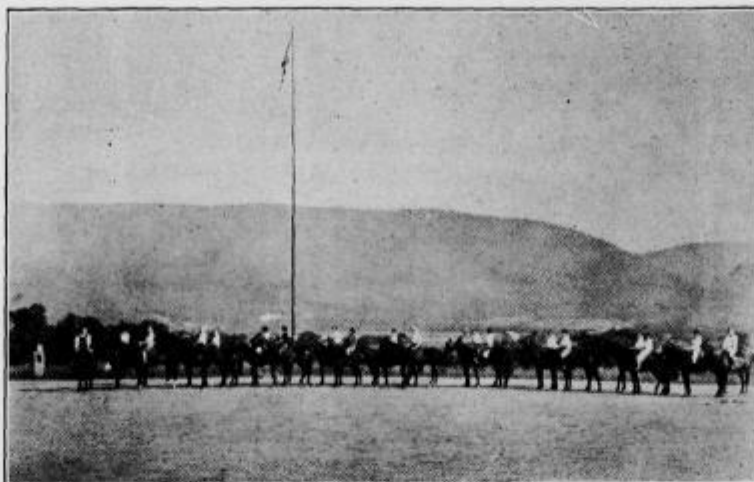
Council members this year: Eleanor Wood, Williamsport, Pres. Pearl Heiges, Lemoyne, Vice-Pres. Sally Meyers, West Milton, Sec'y Belle Isle Stoner, Bedford Valley, Treasurer Etta Moreland, Jamestown, Sr. Rep. Marian Harsch, Williamsport, Jr. Rep. Leah Kraemer, Pottsville, Soph. Rep. Helen Nichols, Reading, Fresh. Rep. They were assisted by Miss Belle Holaway, Dean of Women, advisor of the group.

At a meeting in March new officers for the coming year were elected. These girls, installed in May, are:

- Leah Kraemer . . . . . President
- Belle Isle Stoner, Vice-President
- Helen Nichols . . . . . Secretary
- Sara Meyers . . . . . Treasurer



PEARL HEIGES  
Student Council



HORSEBACK RIDING

### Bel Canto Society

Continued from page 1

Included in the program of modern classical songs, largely by living composers, were several of the popular Friml-Rieger songs, "Allah's Holliday" and "Giannina Mia," and a group of lullabies of which "The American Lullaby" was composed by Miss Gladys Rich, an instructor at Clarion Teachers College.

Miss Ullemeyer annually selects from the members of this society the soprano and alto for the College Mixed Quartet, which this year is composed of Miss Ethel Law, Lock Haven, soprano; Miss Julia Cronister, Julian, alto; Morrill Laubach, Williamsport, tenor; Franklin Courter, Blanchard, bass; and the College Girls' Sextet, composed this year of the Misses Jean Kopenhaver, Norristown, and Nancy Kiser, Wilkinsburg, first soprano, Edna Sweinhart, Pottstown, and Aldine Glossner, Lock Haven, second soprano, Evelyn Custer, Johnstown, and Mary Ellen Ringler, Mifflinburg, alto.

The constitution of the Bel Canto Society includes in its by-laws an unusual yet animating provision—the Point System. This plan introduced into the club by Miss Ullemeyer, contains the administering of points for merits and demerits accordingly as each member of the club adds to or detracts from her standing in the organization. At the close of the college year awards will be made to the three girls obtaining the highest number of points, each of the three representing soprano, second soprano, and alto, respectively, the presentations to take place in the presence of the entire college student body during some assembly program.

This year the members of the Girls' Glee Club met regularly for rehearsal twice a week, on Tuesdays and Thursdays, from 4.30 to 5.30 in the afternoon. At the beginning of each college year the organization compromises on rehearsal time to make it convenient to each individual.

Aside from the major purposes and aims of the society it also freely abandons all thought of formality frequently and experiences pleasure in commonplace amuse-

Look in Adjoining Column

### Horseback Riding

Horseback riding at Lock Haven State Teachers College is one of the most attractive of the extracurricular activities. Lock Haven is fortunate in having Troop K, 103rd Cavalry, of the Pennsylvania National Guard, stationed here, and the riding instruction is one of the benefits reaped by the college.

Classes for beginners and supervised rides are conducted twice a week during the fall and spring months, as well as in the summer, and are open to both men and women students. Instruction is in charge of officers and instructors at the Troop K Post.

Special equipment for riders is not required—breeches and heavy shoes may take the place of more formal riding clothes—and the charge for instruction is lower than riding charges in many other places.

Riding classes start very early in the fall, and any student wishing to participate is admitted upon presentation of written permission from parents or guardians to the instructors in Health Education at the college.

**Bel Canto Society** . . . . . ment such as cabin parties, theatre parties, banquets and holiday festivities.

All the activities of the Bel Canto Society make for the advancement of a real school spirit.

**Women's Athletic Association** . . . the present generation of prospective teachers.

The membership of the Women's Athletic Association numbers well over one hundred students. Its newly elected officers are—

- Mary Ann Roberts . . . . . President
- Gretchen Dickey . . . . . Vice-President
- Mary Ellen Ringler . . . . . Secretary
- Leah Varner . . . . . Treasurer
- Marjorie Pfoutz . . . . . Recorder

**The Dramatic Club** . . . . .

(Continued from page 1)

dramatists we regretfully say, good-bye.

The Dramatic Club is very sorry to lose any of her members for they have helped make the club a by-word for achievements.

### Women's Ath. Assoc.

Continued from page 6

this field, and so in this association a designated number of points, earned before the close of the sophomore year, entitles the member to a material symbol of athletic success: the monogram of the association represents honorary mention, a college blanket bearing this monogram typifies highest honors. Since mass participation is the ideal of the group, standards are so set that conscientious participation in a well-rounded athletic program throughout this period would earn for a student an honorary award, even though the student did not possess special talent in any of the activities chosen.

The Women's Athletic Association sponsors many activities, of which the most popular "yearly dozen" are probably tennis, hockey, volley ball, hiking, roller skating, bicycling, basketball, clogging, natural dancing, baseball, track and archery. The cocoa-pouring which is a feature of alumni homecoming; the stunt night in which all organizations are invited to participate, with proceeds devoted to some college project of outstanding merit; and the production of the annual spring festival in conjunction with the department of physical education for women—these comprise the major contributions which the association makes each year to the life of L. H. S. T. C.

During 1934-35, the W. A. A. added one more achievement to its record. This was the publication of one issue of the college bulletin, devoted entirely to considerations regarding physical education and prepared especially from the health instruction, with material prepared especially from the standpoint of the classroom teacher. The bulletin has received favorable comment from leading educators throughout the country, and was reviewed in the journal of the American Physical Education Association as an outstanding contribution representative of the best thought and practice among

Look in Adjoining Column



EVELYN WILLIAMS  
President, W. A. A.