

EAGLE EYE

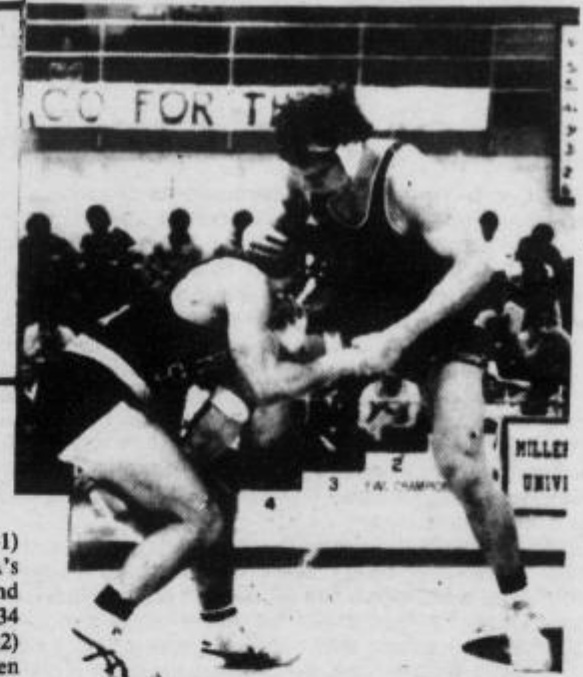


Parsons Union Building
Lock Haven University
Lock Haven, Pennsylvania
17745

Volume 30 □ No. 7 □ 4 pages
Tuesday, February 28, 1984

Photo by Marty Pflieger

LHU's Doug
Buckwalter main-
tains balance.



Three Bald Eagle wrestlers qualify for NCAA Division I championships

By Dave Prusak

Wrestlers Doug Buckwalter, Rick Petersen, and Don Parsley will represent Lock Haven University (LHU) at the NCAA Division I championships in March, by virtue of their fine performances in the Eastern Wrestling League (EWL) Tournament this past weekend at Millersville.

Fourth ranked Penn State University roared to a third consecutive team title with 95 1/4 points, but had five of eight NCAA qualifiers drop decisions in the championship finals. Behind Penn St. respectively were Cleveland State (59 1/2), Clarion (56 1/4), and LHU (48 1/2). Bloomsburg, Pittsburgh, West Virginia, and host Millersville were behind the Bald Eagles respectively.

LHU senior Don Parsley (28-9-1) captured a wild card in the NCAA's by impressively defeating Cleveland St.'s Dave Budnar (18-8), 12-5 at 134 lbs. Penn St.'s Scott Lynch (11-2) captured the 134 lb. title when Clarion's Mark Ciccarello (32-5-1) was forced to default early because of a knee injury.

Parsley said, "Personally, things could have gone a little better. The loss against Ciccarello upset me because I was close to a pin when he got hurt and then the momentum changed after that. The key to beating Budnar was that I got an early takedown and stayed on top."

Parsley added, "We placed six guys in the top four places and we beat Bloomsburg in the team race. We were capable of doing better but Penn St., Cleveland St., and Clarion wrestled well also, so give them credit."

Parsley added, "We placed six guys in the top four places and we beat Bloomsburg in the team race. We were capable of doing better but Penn St., Cleveland St., and Clarion wrestled well also, so give them credit."

Cleveland St.'s Bob Richards (25-2) won the 142 lb. title when Penn St.'s Eric Childs (12-3-1) was forced to default because of a nagging knee injury. LHU junior Tommy Kreamer (19-10) had a great year but was simply overpowered by Childs and Bloomsburg's Tom Fiorvanti who both wrestled at 150 lbs. for most of their career.

At 150 lbs. Penn St.'s Chris Bevilacqua (27-3-3) totally dominated Clarion's top seed and third ranked Ken Nellis (33-3-1) and went on to roll 13-4. Bald Eagle junior Bryon Benner (12-9-2) took an impressive third place finish by upsetting Millersville's best wrestler John Meys (19-6) by a 10-5 score.

Senior 158 lb. all-time LHU win leader Doug Buckwalter (38-4) won his first EWL crown by posting a very exciting come from behind win over Penn St.'s Greg Elinsky (30-4-1). Buckwalter was a victim of a late controversial call in the final period which gave Elinsky the lead, but came back with twelve seconds left in the match to get a takedown and be one of two LHU EWL champs this year.

At 167 lbs. Pitt's Jeff Jelic (28-2) took his third EWL title by capturing a solid 7-3 win over old nemesis Eric Brugel (26-9) of Penn St. LHU freshman Jody Karam (21-14-1) did a nice job to place fourth.

Pitt's Jelic, who was later named the Tournament's Outstanding Wrestler, said, "Barring upsets I expected to wrestle Brugel. I was really pleased with my effort and it

□□□ Please turn to page 3

LHU's Rick
Petersen is
in control



Photo by Howie LeCates

At 118 lbs. Penn St.'s second ranked senior Carl DeStefanis (34-1-1) became the fourth three-time champ in EWL history and earned his third trip to the NCAA's by defeating Bloomsburg freshman Ricky Bonomo (24-3-1) by a 12-4 score. LHU senior Ken Whitsel (28-12-1) finished his career on a sour note by dropping matches to Bonomo and John Velimesis of Cleveland St.

Following his championship victory, DeStefanis said, "I felt really good wrestling him (Bonomo) because I stayed on top a lot and didn't allow him to use the upper body. Each match will be tough for me at NCAA's."

DeStefanis added, "Our team is positive and we are looking forward to NCAA's. I think dropping five championship finals tonight will help us. An NCAA national championship is in reach for our team and we all think we can win it."

At 126 lbs. Bloomsburg freshman Rocky Bonomo (25-3), Ricky's twin brother, avoided a last second tilt and won 7-6 to prevent Cleveland St.'s Dan Foldesy (24-6) from taking his third EWL title. Bald Eagle freshman Dicky Howell (3-5-1) was a pleasant surprise by turning in a fourth place finish.

Black History month concludes

Students model fashions at Black Arts Show/Dinner

By Aimee Kalnoskas

The Black Cultural Society's (BCS) celebration of National Black History Month concluded Saturday night in the height of fashion at the Annual Black Arts Festival Fashion Show and Dinner held in Bentley Hall. Student models strutted the stuff of local clothing shops, while commentators name-dropped national and international designers.

The guests at the show previewed the latest styles for spring and summer and many of the business suits aimed at the college graduate. It looked like another season of anything goes with black leather mini-skirts and jackets for casual wear to the classic three-piece business suits for the job interview. In-vogue formal fashions were also worn by the models. For the women, it was black and white tafeta gowns with V-necks, off-the-shoulders, and one shoulder designs. To top off the gowns, the women wore coats of natural ranch mink, Norwegian blue fox, and American lynx in a variety of lengths. The men dressed their best in tuxedos by After Six and European formal designs by Yves Saint Laurent also in the classic black and white.

Fashions for the show were provided by Brooks of Nittany Mall, Gracie's of Nittany Mall, Hoy's Men's Shop, John Marshall's Men's Shop and Weaver and Probst, all of Lock Haven. Three \$25 gift certificates from Hoy's, John Marshalls, and Weaver and Probst were won by Melinda Gary, Sandy Pearman, and Richard Hardware, respectively.

Following the fashion show, the president of the BCS, Paris Hyman, presented two awards on behalf of the BCS. The awards were for the two individuals the Society felt had been most instrumental to the success of the Black Arts Festival. Dr. Dorothy Houston, director of Upward Bound was honored for being "willing to sacrifice her time to see that everything went just right for the BCS," said Hyman. Hyman also presented another award to Robert D. Lynch, advisor to the BCS and Affirmative Action director/assistant to the vice-president of administration for being the man "who time after time gave up his time to insure the success of the society's activities as well as the festival."

Dr. Craig D. Willis also extended his congratulations to everyone involved in the Black Arts Festival.

"I've been impressed once again with the whole month of activities. This is a very inspiring group." Willis challenged all students to live up to the best they can and felt that "the fashion show is illustrious of how people express themselves on the outside to the world. We need to do that not only by our clothing but in other ways as well. I urge everyone to aspire to high and good things."

Hyman concluded the event by recognizing the 1984 black graduates and said that he hopes the success of the Black Cultural Society will continue.

The following students were models for the fashion show: Linda Carter, Diane Chilangua, Michael Courton, Richard Hardware, James Kalbaugh, Hyacinth Small and Sherri Roth.

EDITORIAL

It just isn't meant to be

Booking a concert for this semester is becoming increasingly more unlikely, simply because of the time element. We constantly hear accusations of who is to blame, but we seldom aim them in the right direction.

The most popular scapegoat is obviously past administrations, who have been said to be unable to book a successful concert. Doesn't the real problem, however, lie in the University itself? Is this campus really compatible with a good concert? The past would appear to answer these questions.

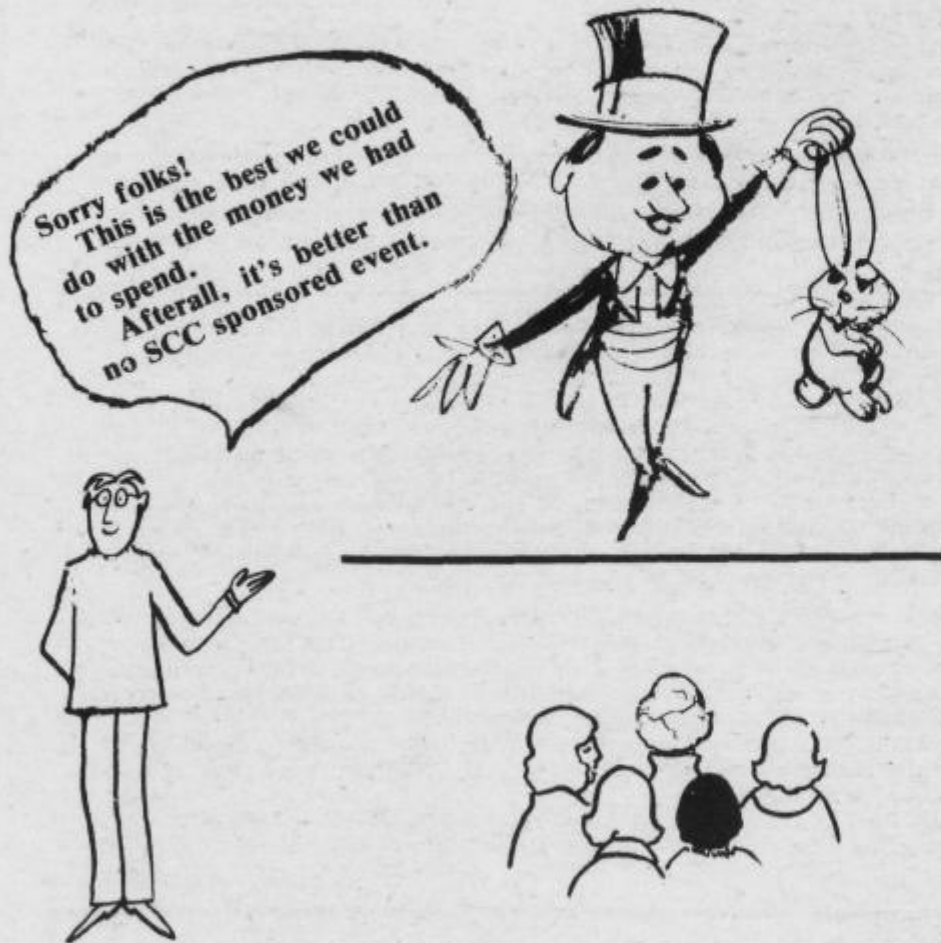
Oh, you say we had Rush and Blue Oyster Cult—two fairly big time bands on the circuit today. But look back and tell me who they were then. They surely weren't on top—they were in the early stages of a very successful career.

You say we had Molly Hatchet, and they were a big time band at the time. If you were at that concert, you understand why the Social Committee is having so much difficulty now. The Todd Rundgren and Utopia fiasco was simply icing on the cake.

Give the Social Committee credit. It's amazing that they can even get an agent to talk, let alone talk about booking a band. And it certainly isn't the committee's fault that the SCC can't afford Heart, or that the Romantics can't accommodate certain dates, or that a small school in New Jersey outbids the SCC for Huey Lewis and the News a few hours before the deadline.

It always seems to be a different reason, but maybe the real reason is that it just isn't meant to be.

C.B.



LETTERS TO THE EDITOR

No win situation

Dear Editor,

Between a rock and a hard place is often the disposition of the residence hall counselor. Some call his a no win situation. Others just call it plain masochism. Even the best student counselor finds it difficult to please everyone on his floor. Unfortunately, some residents fail to realize this.

Sometimes the counselor is hard to understand and you ask, If he gets free room and board for his position, why should he write someone up for throwing chairs down the stairs? If he's already got a 3.0 G.P.A., why quell the noise in the hallway? And if he's 21 and a frat member why would he be against friends sipping wine each night or having parties in their rooms?

The answers to these questions go beyond the fact that he's simply doing his job. Maybe he really cares. CARES?! What caring person could actually receive gratification from getting people into trouble?

Well first of all, the choice of getting into trouble is not that of the counselors. Rather, it's that of the person getting into trouble. Second, no one enjoys writing his neighbors up! In fact, it's a very hard thing to do (and after awhile it becomes a pain in the ass).

A write-up is aimed at foolish behavior,

not the person or his quality characteristics. Counselors usually resort to a write-up to avoid becoming a baby sitter.

Unfortunately, residents tend to misread the good intentions of their counselors and interpret them as manifestations of harbored grudges or fanatic urges to be out for blood or to fill a quota. All of this is nonsense.

Contrary to popular belief, counselors are good people. It's a shame that others are sometimes thoughtless, incompassionate, and immature enough to make things tough on the counselor, when all he's trying to do is keep the residence hall fees down and let the serious students achieve their goals without being dragged down by the less serious ones.

Counselors are people too. As students, they have their share of deadlines, tests, and worries. It might be hard to relate to them as counselors but it should be easy to relate to them as people. Make somebody feel really good. Drop by and visit your counselor. Tell him that you appreciate his efforts. Don't challenge him, but encourage him to be his best in his position. His effectiveness will make your residence hall a better place for you to live.

Timothy Altieri

SCC revenues

Dear Editor:

The Student Cooperative Council, Inc. faithfully collects activity fees every semester, totaling the amount of \$242,875.00 yearly. The SCC also receives revenue from other areas, such as, athletics, snack bar, bookstore, totaling the amount of \$99,200.00. The total anticipated revenue for the budget year 1983-84 is \$342,075.00. Yet, the question still remains of what is being done for the students with this money?

The money received from anticipated revenue is separated into 14 areas of allocations. These allocations are fixed expenses, athletics, band, choir, college players, contingency, cultural affairs, executive committee, intramurals, P.C.C.E.B., student publications, R.H.A., small clubs, and social committee. From this list, it would appear that a rather large sum of money is funding very few benefits to the students. Not so. Taking a sample view of 4 areas of allocations, it is evident that the budget is providing benefits to the students.

Athletics has a budget of \$106,000.00 and must fund 18 collegiate sports. Even though the student may not participate directly in a sport they still reap the benefits through

free attendance to events with a validated I.D.

Cultural Affairs with a budget of \$14,000.00 sponsors many of the various performances of art, music, theatre, and lectures, on campus. Once again, the students may benefit from this by free admittance with a validated I.D.

From the budget 22 small clubs receive \$13,000.00. These small clubs benefit the student by enhancing the educational experience. This is done by the various lectures that are sponsored by the clubs.

Social Committee often causes a great deal of controversy on campus. This is where the students first look to see where their activity fee is being spent, mainly in the form of concerts. However, the committee is funding more than concerts. They also supply movies each semester and make major contributions to Homecoming.

This article is not a complete representation of all the benefits the SCC sponsors for students. Students are encouraged to take an active role in the activities presented to them and to talk to any Executive Committee member with any other concerns about where your fifty dollars is going.

Danette A. Bixler
Corresponding Secretary, SCC

CLASSIFIEDS

BIBLE STUDY - Come learn more about this no. 1 best-seller! Wednesdays at 8 p.m. in Zim 8.

ALL FACULTY AND STAFF: You are invited to attend an Ecumenical Christian Fellowship every Wednesday at NOON in the Hall of Flags. COME JOIN US!

Lambda Chi Alpha Fraternity's third annual 24-hour Volleyball Marathon for charity begins in Zimmerli Gymnasium March 9 at 6 p.m.

Proceeds will benefit the American Cancer Society and other local charities.

Teams will consist of 8-10 people, with six persons on the court at all times. Each team will be required to have at least two females on the court at all times.

To be eligible each person must have at least \$5.00 in donations. Each player that collects over \$15.00 in donations will receive a free T-shirt.

Sign-ups will be held Feb. 27 thru March 8, from 4:30 to 7 p.m. in Bently Lounge on the LHU campus.

For more information contact Mike Gross at 748-5452.

The Psychology Club will be meeting this Thursday (March 1st) at 1 p.m. in Robinson room 317. A film presentation on Depression will be shown. All majors welcome.

WLHC-FM Airband contest
Wed. March 7 at 7:30 p.m.
Price Auditorium

ATTENTION CYCLISTS: is anyone interested in forming a club, or getting together for rides? If so, call Nora O'Neill at 748-2111.

ATTENTION MANAGEMENT SCIENCE MAJORS: There will be a short General Meeting, Thursday, March 1 at 1 p.m. in Raub 205. Main topic to be discussed is our next trip to New York City!

LOST AND FOUND

An Adidas jacket was found next to Sullivan Hall on Friday, February 24. If it is yours, please contact room 212 North or call 3538.

EAGLE EYE



The Eagle Eye is a student produced bi-weekly newspaper published in the
Parsons Union Building
Lock Haven University
Lock Haven, Pennsylvania
17745
Telephone (717) 893-2334

Letters and comments are encouraged. All letters submitted for publication must be signed and accompanied with the writer's telephone number. The Eagle Eye reserves the right to edit letters for length and libelous material.

The opinions expressed on the editorial page are not necessarily those of the administration, faculty, or student body.

Editors-in-Chief-----Chris Brooks
-----Martin Pflieger
News Editors-----Mike Flanagan
-----Kim Wilkinson
Sports Editor-----Kevin Campbell
A'sst. Sports Editor-----Dave Prusak
Entertainment Editor-----Andrew Ashenfelter
Features Editor-----Steve Coffman
Photography Editor-----Rick Hunt
Staff Artist-----Steve Donaldson
Business Manager-----Sandy Houser
Advertising Director-----Aimee Kalnoskas
Advertising Sales-----Connie Smith
Adviser-----Dr. Douglas Campbell

SPORTS

Continued from page 1

Wrestlers qualify

made me feel good to win the Outstanding Wrestler award because it showed that the coaches saw something special in my wrestling."

Jelic added, "I'm happy for Doug Buckwalter because I didn't think he got credit he deserves in the East. Doug beat a lot of tough people and has wrestled a lot of good matches. Doug should do well at NCAA's."

Cleveland St.'s Matt Dulka also took his third EWL title by upsetting Penn St.'s fifth ranked Bob Harr (23-10-3) at 177 lbs. by a 7-5 score. LHU's Greg Wykoff, a sophomore, (16-16) came close to beating Dulka and did a good job overall even though he didn't place.



Coach Neil Turner, "...an attitude to win, not just place."

Photo by Marty Pflieger

At 190 lbs. Clarion's Jim Beichner won his first EWL crown by defeating West Virginia's Wilbur Wolf by a 7-6 score. Bald Eagle junior Ty Hall (14-15-1) was competitive but couldn't place in the top four of this weight class. Bloomsburg's John McFadden went 3-1 to earn an NCAA wild card spot at 190 lbs.

Junior heavyweight Rick Petersen (31-6) gave LHU another EWL champ by dominating Penn St.'s two-time EWL champ Steve Seftor 12-6. Petersen had to go three overtimes to defeat Cleveland St.'s Matt Ghaffari (30-6-1) 2-1 to reach the championship match with Seftor. Ghaffari earned the final wild card selection.

Petersen said, "I used more concentration and had less wasted shots. I wanted to go to NCAA's and I'm happy to win. Our team gave it their all."

Of the tournament, LHU coach Neil Turner said, "There were more better wrestlers here this year than in any of the previous year's I've been coaching. Six top four wrestlers is the most we've placed since I've been here. All of our returning guys are capable of becoming EWL champs next year."

"All three of our guys going to NCAA's are capable of winning a championship. My philosophy is to stress an attitude to win, not just place," said Turner.

The 20 EWL finalists from each weight class and three wild cards will advance to the NCAA Division I wrestling championships at the Byrne Meadowlands Arena in East Rutherford, N.J. on March 8-10.

Boxers split in bouts; prepare for Invitational

The nation's third ranked collegiate boxing team, the Lock Haven University Bald Eagles, split in a pair of bouts at the annual Penn State Collegiate Invitational Boxing Championships this past Saturday night in the White Gym.

Lock Haven's 150 pound Rocco Iannetta scored a close split decision (3-2) victory over the Nittany Lion's Mike Paolin. Iannetta, a tough sophomore from Philadelphia, used a strong third round to decision his opponent. Iannetta used a series of body combinations late in the 3rd round to win the close bout.

Suffering his first loss of the season was John Morrin, a promising 172 pound

freshman from Philadelphia. Morrin lost a split decision (3-2) to PSU's Joe Plastino. Steve Greber, 156 pound sophomore, had his bout cancelled with Scott Owens at the last minute because Owens came down with the flu.

Scheduled to box in the Central Connecticut State University Invitational this Saturday in New Britain are All-Americans, Tim Frymyer, 112; Dave Washington, 119; and Ken Cooper, 132. The three seniors are the "Haven's" best bets for national titles this April at the University of California at Berkeley. Cooper will box the feature bout against scrappy John Calles of CCSU in New Britain on Saturday night.

Lady Eagles host Scots

By Christa Landas

PSAC Western Conference quarterfinal play begins Tuesday at 6 p.m. for our Lady Bald Eagles as they look to beat the Fighting Scots of Edinboro for a spot in the Final Four play offs.

The LHU women came from behind Friday to beat Scranton, 71-65. The hot handed Scranton club had the advantage most of the game until the 6:08 mark of the second half, when our Eagles tied it up at 52-52 and then pulled away for the win.

Tina Martin led the scoring for both teams with 26 points and Donna Sergi put in an additional 13. Scranton's Malanie Bibak had 19 and Sharon Barone chipped in 10.

Indiana University of PA took first place in the PSAC West with a regular season slate of 9-1. Indiana's only loss was at the hands of the LHU Eagles when they lost here, 90-84. Lock Haven University copped the second place honors with a 7-3 record in the Western Conference.

Indiana has the home court advantage and will host Slippery Rock University while LHU also gained the home court advantage and will host Edinboro. The two winners from the West will meet the two top finishers from the East at Hershey on March 2 and March 3.

In the Eastern Conference, Millersville has the number one ranking, East Stroudsburg is second, Shippensburg is third, and Bloomsburg is fourth. For top two honors, Millersville will play Bloomsburg and E. Stroudsburg will take on Shippensburg.

"Control. Fundamentals. Execution." are the shouts one hears from Coach Fred Riley during the LHU women's games, and these three words describe perfectly how the team is playing. In their last few games, Lock Haven has been playing excellent, controlled basketball, and should they continue to play as well as they have been the Fighting Scots are in definite trouble.

Riley says that this is a very big game for the Lock Haven women and the team would like to see the whole student body out to "raise cane" and help the Eagles soar to victory over Edinboro.

LHU and Edinboro split during the regular season. The Eagles won at home against the Scots, 76-63. Edinboro was without their number one scorer the first time the two teams met, so it should be a very good, close game here Tuesday night.

Coach Riley said, "I expect a good game. Edinboro will be at full strength. But we are prepared."

Riley, also, said, "We're looking forward to this game. The girls promise to give the LHU fans the best game of the year. We're up to play."

Tina Martin is averaging 20.4 points a game, Lori Young has a 10.1 average and 7.7 assists per game, and Sonia Pez is averaging 9.9 markers per contest.

The PSAC game, Tuesday, is one of the biggest in the history of women's basketball at Lock Haven, and with the prospect of a Final Four berth close-at-hand, the Lady Eagles need the support of this campus. Tip-off is at 6 p.m. against the Fighting Scots.

EVEN STRAIGHT A'S CAN'T HELP IF YOU FLUNK TUITION.

Today, the toughest thing about going to college is finding the money to pay for it. But Army ROTC can help—two ways!

First, you can apply for an Army ROTC scholarship. It covers tuition, books, and supplies, and pays you up to \$1,000 each school year it's in effect.

But even if you're not a scholarship recipient, ROTC can still help with financial assistance—up to \$1,000 a year for your last two years in the program.

For more information, contact your Professor of Military Science. **ARMY ROTC BE ALL YOU CAN BE.**



Applications now being accepted. Contact: Cpt. Gene Hare Bentley Hall 893-2299

under new management

Maria's #2 PIZZA and Italian Restaurant

Large Plain Pizza - \$4.75

Special Homemade platters

Delivery times 12 -11 p.m.

every day of the week

Clinton Plaza Mall

* 748-5362 *

CAMPUS NEWS

Lock Haven rated sixth

By Jean Newcomer

The Gourman Report, which rated Pennsylvania State Universities, placed Lock Haven in the sixth position, according to Dr. John Zaharis, Vice-President of Academic Affairs.

President Craig Willis said the study is incredulous and there is no clue as to how the information was gathered.

Gourman rated schools according to the school's catalogs and did not visit the institutions to see what their programs were like.

In studying the information, Willis discovered that Gourman seemed to favor large research schools over undergraduate schools. Zaharis said the study cannot be reproduced because Gourman will not

allow anyone to see his formulas or information, making it an unscientific study.

Zaharis pointed out one of Gourman's inaccuracies. Gourman rated Pennsylvania State University's Home Economics Department high on his scale but they do not have a Home Economics Department.

Willis said that LHU is a regionally accredited institution and that is what is important.

"We do as well or better than larger schools. We offer quality undergraduate programs and continue to emphasize that," said Willis.

LHU's public relations department sent a statement to The Centre Daily Times, a State College newspaper, refuting Gourman's report.

Day Care workshop has benefits

In what, hopefully, will be the first in a series of programs designed to benefit the entire community, Lock Haven University and the Lycoming County Child Day Care Center are sponsoring a workshop for the teachers, staff and coordinators of day care centers.

"We have had several requests from off-campus groups to bring courses and workshops to the public," said Bertha Mayes, Professor of Education at LHU.

"We like to work with as many of the various groups in the community as possible," said James Smalley, Director of LHU's Continuing Education Program, "and hopefully this workshop will be just the beginning of this type of program."

The one-day workshop will be held March 22, in Williamsport. The morning session will feature lectures on "Characteristics of Children Between the Ages of Two and Six," and "Identification and Management of Problem Behaviors" by LHU Psychology Professor Ted Forbes. Also scheduled is a lecture on "Planning for 'The Match' Within Program Structure" by Mayes.

The afternoon session will be a workshop centering on "Creative Activities to Celebrate the Joy of Discovery in the Arts, for Teachers of Children Age 2-6." The workshop will be conducted by Helen Goodell, Professor of Early Childhood Education.

"What we are hoping to do, with this one-day event, is to lay the seed for more

workshops along similar lines, and if everything works out we may eventually be able to offer college credits for this type of program," said Smalley.

Twenty-five people from the Lycoming County Child Day Care Center and other area groups will be involved in this first In-Service Workshop.

Interior art exhibited

Sloan Gallery is featuring the work of Bonnie Levinthal, 216 East Foster Avenue, State College, formerly of Ardmore, PA.

The 23 works on display include monoprints, collages, and drawings. Most work in the shows deals with interiors. "I am intrigued by the way light interacts with and changes interiors," Ms. Levinthal noted. "My collages are all based on change. As the viewer moves, the collages change."

Ms. Levinthal received a B.F.A. from Philadelphia College of Art and an M.F.A. from Penn State. She has exhibited at Penn State and at other colleges and universities. She will have a show at the Philadelphia College of Art beginning March 11.

The exhibit at Sloan Gallery will conclude March 9.

The public is invited to attend the opening and reception for the artist on February 29 at 8 p.m. in Sloan Gallery, Sloan Fine Arts Center, Lock Haven University.

Congratulations,
Doug Buckwalter, Rick Petersen, and Don Parsley for your outstanding work at the Eastern Wrestling League Tournament.
From the staff and management of the Eagle Eye.
Good Luck at the NCAA Championships

WLHC - AIRBAND CONTEST

Wed. March 7 at 7:30 p.m.
in Price Auditorium
Admission - only 50¢

1st prize - \$100.00
only \$5.00 per group entry fee
sign up during lunch and dinner hours
sign-ups end Wed. Feb. 29

Presenting CORK'S PLACE

If you don't think it's a great place to party, ask someone who's been there!



Specials every
Tuesday
and Wednesday
nights!!

Open 12-2
Six days
a week

corner of E. Bald Eagle and Liberty Streets

Country Hair Stop 748-5224

\$40.00 perm for \$30.00
Join our Hair Club

Join our Hair Club

9:30 - 2:30 221 1/2 E. Main St.
3:00 - 8:00 200 N. Fairview
9:30 - 5:00 (Saturdays) 200 N. Fairview

Country Hair Stop 748-5224

Donnie's Super Curl
whether Black or White.

Super Curl is out of sight!

Regularly \$55.00 now for \$45.00
Eyebrows and Eyelash tinting \$10.00

9:30 - 2:30 221 1/2 E. Main St.
3:00 - 8:00 200 N. Fairview
9:30 - 5:00 (Saturdays) 200 N. Fairview

ROY'S RESTAURANT

You can call it a GRINDER or
You can call it a CONEY or
You can call it a GROWLER or
You can call it a TEXAS-STYLE or
You can call it a CHILI DOG

But no matter what you call it,

WE have the biggest & best
Chili Dog in Lock Haven

Fresh Potato French Fries
no preservatives .75¢

Liter of soda .75¢

Breakfast, Lunch, and Dinner



Open Daily 7-7 Sun. 7-2

Late Hours

Fri. & Sat. 11-3 a.m.

LHU Special Price

132 E. Main St. 748-4210
Lock Haven