

**Coming
Friday: A
look into
Roger's gym**

Lock Haven University

**Eagle
Eye**

Parsons Union Building
Lock Haven University
Lock Haven, Pennsylvania
17745



Vol. 34 No. 32 4 Pages
Tuesday, February 16, 1988

**Women cagers
host Edinboro
Wed. at 6 p.m.**

PUB changes may reveal \$7.50 increase in student fee

By Marie Sandy
Staff Reporter

Upcoming repairs to the Parsons Union Building (PUB) may cause the current student community center fee to be raised from \$2.50 to \$10.

According to PUB Director Leland Spangler, the building is in need of a new roof, and a new freezer is needed for the snack bar.

In addition, Spangler said that the building also needs other improvements such as new tables, drapes, and chairs to beautify the PUB.

"This is a project very near and dear to my heart, and I hope to be able to implement the proposed improvements in the near future," said Spangler.

According to Spangler, some of these recommendations are vital to the upkeep of the building.

"The roof is over 20 years old, and that's usually life expectancy," said Spangler.

According to Spangler, a new roof will cost anywhere between \$30,000 and \$40,000 to repair, and the community center fee currently raises \$5 a year per student, which amounts to \$14,000 annually.

An expansion of the entire PUB has also been proposed, but as of yet no final decisions have been made.

According to Dr. Dean Phelps, vice president for administration and development, the speculated cost of this expansion is between \$3 million and \$3.5 million and will take three to eight years to complete.

Spangler said that a PUB Expansion Committee, created to investigate the renovation of the PUB, was disbanded at the end of last semester because it was ineffective.

However, Spangler added, "A new committee will be appointed shortly to hire an architect to investigate costs. Once we get an idea of what we want, the student body will have an opportunity to vote on

it."

In response to the question of how much the renovation will cost per student, Phelps said, "It's too early to speculate on exactly just what the amount will be. The way things should start is that people should say what they want."

The plans proposed by the SCC and Spangler may possibly include an entirely new building including a bowling alley, large conference rooms, an enlarged bookstore and a student commuter lounge.

"The lounge we have now for our commuter students is just terrible," said Spangler. "Adult students have no suitable place to go between classes."

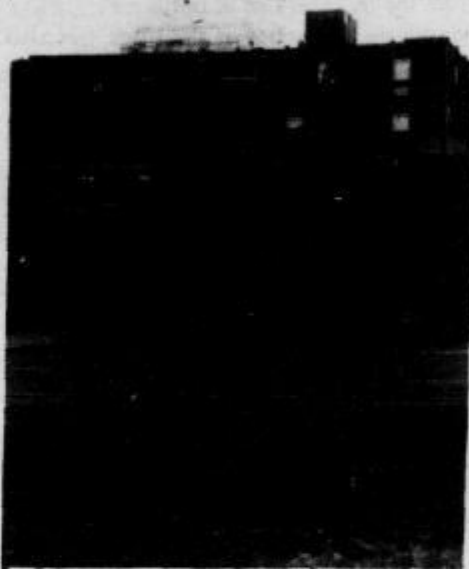
SCC President Bob Rote also voiced discontent for the current facilities.

"The PUB is not what a student union should be," said Rote.

Rote suggested that students voice their opinion on changes to the PUB to their student senate representative.

In a final note of support for the PUB renovation project, Spangler added, "A

student union building should be the hub of college life. We should make the PUB an institution that the whole campus can be proud of."



Parson's Union Building

Eagle Eye file photo

*Is Roger's gym
to be closed
for remainder
of the semester?*

By John P Elder
Co-News Editor

Students who use the weightlifting facilities in the basement of Roger's gymnasium have recently found a padlock on the door and, according to professor of health and physical education Dr. Kenneth Cox, the sudden closing of the facility "has ruffled some feathers."

"I can't see how anybody could do that," said Cox. "It's like going downtown and closing a church."

Cox said that he believes that the room will not remain closed long because of the popularity of the room with campus students.

Bill Barrett, former treasurer of the University's barbell club, was upset by the closing of the facilities and questioned the University's ability to close the room.

"I don't know what's happening, but it's not right. You pay your activity fee and this happens," said Barrett.

Librarian named editor and is published...

Bravard receives honors for library service

By Karen Carlson
Staff Reporter

The Director of Library Services, Robert Bravard, has written an article that has been selected for publication in Library Literature: The Best of 1987 and has also been chosen to be on the editorial board of a new magazine, "The Aquisitions Librarian."

The Library Literature, which has been published annually since 1970, is a book that includes articles related to library sciences.

Bravard's article, entitled "Reading Interlibrary Loans, and OCLC: A Letter to Bill Katz," is a study of why people order books from other libraries when the books are not located in their own libraries.

According to Bravard, Stephenson Library loans up to three books for every one it borrows due to its large collection.

Bravard based his article on results from a questionnaire that was included in books shipped out for interlibrary loans. He had a 90% response rate.

According to the results of his study, the

most common reasons people ordered books were that the title was mentioned in another book, the book was teacher or friend recommended, or the reader was looking for a certain author.

Bill Katz, editor of Library Literature, selected Bravard's article, which he said has opened new doors in library science.

The publication, which acquires material for libraries, collects 80-100 articles. Of

these articles, only 20 are selected.

"I know now, in a small way, what it feels like to make an all star team," said Bravard.

Katz, a professional magazine reviewer, is very involved with science-oriented material.

Bravard was also chosen to be on the editorial board of Bill Katz' new magazine, "The Aquisitions Librarian."

According to Bravard, he was selected because of his excellent reputation in collection development, plus his recent publication.

"It is a professional honor to be selected for an editorial board," said Bravard.

As founder of "The Aquisitions Librarian," Bill Katz, is, according to Bravard, a "leading expert of American libraries on magazines."

Katz is a professor at SUNY (State University of New York) in Albany.

The magazine will be published four times per year and each issue will be devoted to a certain broad topic.

Bravard has been LHU's Library Director since 1970 and has been at the University since 1963.



Robert Bravard

Eagle Eye file photo

Letter to the Editor

Student defends wrestling fans

Dear Editor,

I would like to respond to the comments made by Mr. Richard Hepner, director of Law Enforcement, in the Friday, February 12 edition of the Eagle Eye.

It is quite obvious that the majority of enthusiasm displayed at the wrestling matches comes from the brothers of the Lambda Chi Alpha Fraternity. Our enthusiasm, "rowdiness," comes not only from the fact that one of our brothers, Mike Mazza, is a member of the team, but also we truly believe our cheering helps to keep each wrestler motivated.

Mr. Hepner asserts the fans are only rowdy because they're drinking. I would like to know where he gets his information. Does he actually hang out with the fans before the matches, or did he just need a couple of extra lines to help

finish the Eagle Eye article? For his information, most of us don't finish eating dinner until 7 p.m. We then have about an hour to get everyone together for the 8 p.m. start. We wouldn't have time to drink if we wanted to.

We would like to think that Coach Turner has appreciated the continued support we have given his wrestling team. We are also very proud of our sixth ranked team and hope that their current success continues. We enjoy being a part of it. Comments such as the ones made by Mr. Hepner only contribute to the deterrence of participation among the student body. Hopefully, it won't happen again.

Sincerely,
Thomas J. Seelig, III
Lambda Chi Alpha Brother

Announcements

"Catch the Wave..."

Feb. 23 at 7 p.m. in the Smith Hall Rec Room.

Dating Game Premiere

Don't miss the premiere of WLHU-TV's Dating Game. Watch your friends compete for a dream date on Thurs., Feb. 18 at 7 p.m. on Channel 10.

Contestants Wanted

Contestants are needed for the LHU Dating Game. If you would like to be on the show call Michael at 748-1034.

Student Record

If you didn't receive a New Student Record last semester, you can pick one up in the RHA office on Wed., Feb. 17. Please bring an ID.

Person Needed

All expense paid trip to Wichita, Kansas leaving Lock Haven on Feb. 29, returning March 3. Serve as aid and attendant for handicapped pilot attending refresher training on Cessna Conquest. Call: 748-7301, ask for Chuck Corcelius.

Attention Students

Applications can now be picked up for the fall '88 and spring '89 semesters in China, Mexico, England, Germany, Japan, Poland, Scotland, Taiwan, and Yugoslavia. Information and applications are available in the International Education Office, Raub Hall Lobby, 2140.

Scholarships

Applications are now being accepted for the Rehabilitation Center's \$1,000

Announcements

scholarship, open to residents of Cattaraugus County, NY who are college juniors, seniors, or grad students majoring in special education, social sciences, or a health related field of study. Applications can be obtained in the LHU Foundation Office in Himes Hall.

Scholarship

Mary Ann Fox Scholarship Recipients and interested students: Applications for the Mary Ann Fox Scholarship are available and can be picked up in Robinson 613 from Mrs. Beth Turner. Deadline is April 10.

Lecture Series

Tonight, at 7:30 p.m. in Ulmer Planetarium a lecture will be given on the Western Field Trip - 1987 Report. Slides will be shown and a preview of Western Field Trip '88 will be given.

Roommate Needed

Female roommate needed for summer, \$93/month, heat and water included. Cable and phone hook up in own room. Call Jen or Colleen at 748-2016.

Summer Job

Camp Clear-Pool will be conducting on-campus interviews Wed., Feb. 17 for summer camp positions. They are especially interested in HPER, Social Work, Recreation, and Elementary majors, freshmen thru seniors. Sign-up for a specific time in the Career Planning and Placement Office, Smith Hall, G-3.

Job Interview

G.C. Murphy Co., McKeesport, PA will be conducting on-campus interviews Thurs., Feb. 18 for positions as retail management trainees. Management Science, Economics, and General Studies seniors encouraged to sign up for a specific interview time in the Career Planning and Placement Office, Smith Hall, G-3.

Job Interview

HRB Singer, INC, State College, PA will be conducting on campus interviews Mon., Feb. 22. Interviews are open to Mathematics and Math Computer Science students. Sign up in Career Planning and Placement Office, Smith Hall, G-3.

Human Relations Program

To be held on Sun., Feb. 28 at 5 p.m. at the Holiday Inn in Lamar, PA. Tickets are \$8 per person and can be purchased in the PUB Business Office Mon.-Fri. 8 a.m.-4 p.m. Free transportation will be given to students who need a ride. Place your name on a sign-up sheet when you buy your ticket. Departure time from the PUB

Coffee House will be 3:30 p.m. and 4:15 p.m. Program includes a fashion show, dinner, awards program, and guest speaker Rev. Tyrone Crider. Any questions call Richard West at 2256.

Time For A Change

Phi Mu Delta will hold an open smoker tonight at 9:30 p.m. All men and women are welcome. Rides will be leaving Smith and North at 9:15 p.m. to 87 Susquehanna Ave. Always changing for the better!

U.S. Navy

There will be an information table in Bentley Hall Lounge Thurs., Feb. 25 from 10 a.m.-2 p.m.

Wellness Meeting

There will be a meeting for all individuals interested in working on the Wellness Committee on Mon., Feb. 22 at 9 p.m. in the Wellness Room, Ground Floor of Woolridge.

Needed

The Student Cooperative Council, Inc. is searching for two persons to be appointed to the University Parking Committee. One on-campus and one off-campus student will be needed. If interested call Bob Rote at 2331 or office #10.

Planning Meeting

There will be a planning meeting for the MDA SUPERDANCE today at 6 p.m. in 409 RLC. All organizations are asked to have a representative present. For more information call Chrissy at 3313.

All Education Majors

PSEA will be holding a meeting on Thurs., Feb. 18, at 8:30 p.m. in Robinson 213. Plans for the Children's Festival will be discussed. All are welcome.

Talent Needed

Lock Haven, show us your talent! The Crucible, spring '88, is now taking poetry, art work, and short fiction. Turn in all entries to the Crucible mailbox in the English office, Raub 303. Please type or print all entries and include name. DEADLINE: MARCH 15. Don't wait until the last minute, we're printing all selected works this semester! Faculty and students of LHU are welcome to enter work.

Education Majors

Completed applications for fall '88 or spring '89 Student Teaching in Elementary, Secondary, Special Education, and Early Childhood Education must be submitted no later than Feb. 23 in Robinson 132.

EAGLE EYE

Parsons Union Building
Lock Haven University
Lock Haven, PA 17745
(717) 893-2334



Editors in Chief.....	Sue Berger, Jennifer Smith
News Editors.....	John Elder, Jeffrey Hilty
Sports Editors.....	Bill Alexander, Mike Leavy
Features Editor.....	Abby Mylin
Photo Editor.....	Amy Piotrowski
Copy Editor.....	Michelle Trevena
Business Manager.....	Jill Brady
Advertising Design and Layout.....	Robb Mackes
Advertising Sales.....	Mike McKay, Ifi Tareen
Writing Coach.....	Carolyn Perry
Faculty Advisor.....	Dr. Douglas S. Campbell

The Eagle Eye is the official student newspaper of Lock Haven University. It is published bi-weekly in accordance with the University Calendar. The articles, opinions, pictures and layout of the Eagle Eye are the responsibility of the editorial staff and do not necessarily represent the views of the students, faculty or administration of Lock Haven University unless specifically stated. Letters and comments to this newspaper are encouraged. Letters to the editor must be submitted to the Eagle Eye by noon the day before publication. All letters should be typed, no longer than 200 words, and should include the writer's signature and phone number. The editorial staff reserves the right to edit the copy for libel, taste, style, and length. Eagle Eye meetings are held at 1 p.m. Tuesdays and Thursdays in the lower level of the Parsons Union Building. New members and free-lancers are welcome. The Eagle Eye is funded by the student activity fee.

Eagle Eye Staff Meeting

Tuesday and Thursday
1 p.m.
Lower Level of the PUB
Everyone Welcome

SPORTS SPORTS SPORTS SPORTS SPORTS SPORTS SPORTS

Bald Eagle grapplers defeat Mountaineers 24-17; now 4-0 in EWL

By Mike Leavy
Co-Sports Editor

The Bald Eagle grapplers remained undefeated in the Eastern Wrestling League with a 24-17 victory over the Mountaineers of West Virginia on Saturday.

Craig Corbin continued to look impressive as he disposed of Steve Millward with a 19-6 major decision. Corbin upped his record to 30-5.

Jeff Husick hit the showers early with a first period pin over Dave Miller. Husick racked up 1:05 riding time before hitting Miller for six points.

West Virginia got on the scoreboard when Anthony Melfi had a tough match as he was decisioned by Chris Mary 4-1. Melfi scored on a third period escape.

Gary Chaddock had an impressive showing against Scott Collins as the two matmen tied 2-2. Collins, who finished fifth in the EWL's last year, went into the match with a 20-4-1 record and had to settle for a tie.

"You have to give Chaddock credit for tying Collins," said Head Coach Neil Turner. "He really looked tough."

Thane Turner also put out an impressive showing as he was edged out by Jim Akerly 1-0. The fourth place EWL finisher scored his only point from a stall in the first period.

The Mountaineers took the lead from the

Haven making it 14-12 when Michael Carr pinned Tim Ward who was filling in for the sick John Barrett at 158 pounds.

Jody Karam gained career win 112 and put LHU back on top with an 8-2 decision over Craig Costello. Karam registered 2:41 riding time to cap the victory.

"Karam had a nice victory against Costello," said Turner. "He's a tough wrestler and Jody handled him well."

Brad Lloyd put the icing on the cake as he registered the third pin of the day over Richard Burgdolt near the end of the second period. Lloyd is undefeated this season with a 28-0 record.

Bill Freeman made the win official with an 8-2 decision over Dominic Black at 190 pounds. The grapplers took the lead to 24-14.

With the win secure, Coach Turner opted to start Chris Crissman against Jeff Spinetti at heavyweight. Spinetti decisioned Crissman 8-2 to make the final score 24-17.

The Bald Eagles record now stands at 13-2 in dual meets and 4-0 in the EWL where they are ranked first. The only other team 4-0 in the league is Penn State which comes to the Haven this Saturday at 8 p.m.

Coach Turner said that the team is ready to take on the Nittany Lions.

"We've been preparing for (the PSU match) a long time. This group is ready," said Turner.

General admission tickets will be available Saturday night. Doors open at 6 p.m.

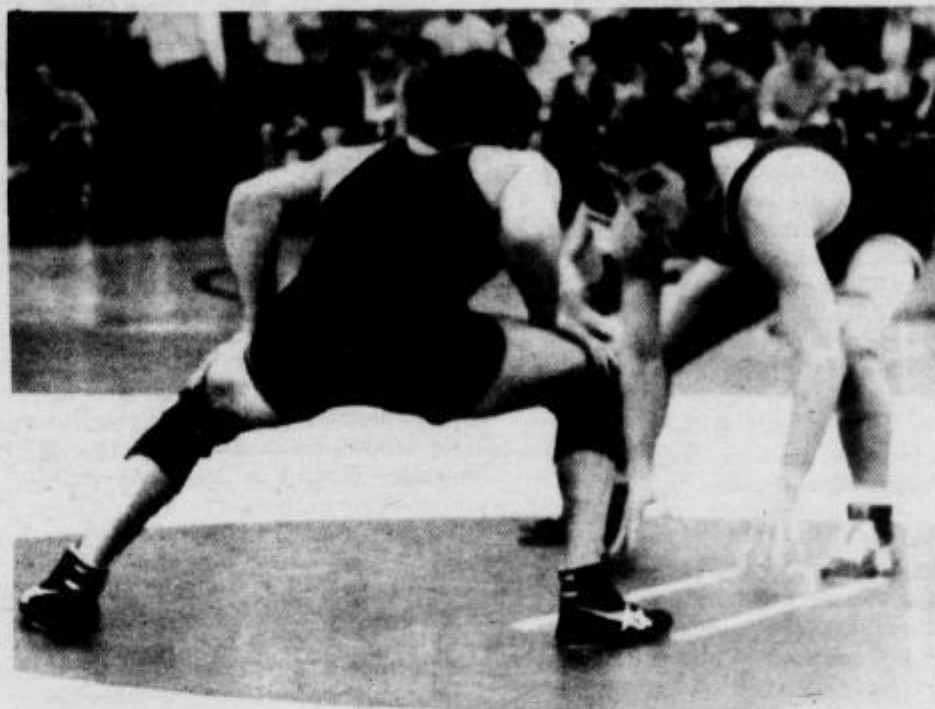


Photo by Mike Leavy

Jeff Husick (above) and Brad Lloyd (below) pinned their opponents in last Saturday's match against West Virginia University. The Bald Eagle grapplers upped their record to 13-2 overall and 4-0 in the EWL.



Photo by Mike Leavy

Lady Eagle cagers lose to Pitt Panthers of Johnstown 91-64

By Merritt La Porta
Sports Reporter

The Lady Eagles traveled to Johnstown Friday to take on the University of Pittsburgh and came out on the short end of a 91-64 score.

"We lost to a powerhouse team ranked eighth in the nation," said Head Coach Frank Scarfo. "We had eight games in thirteen days and the kids were tired. We didn't play up the game to be important."

Freshmen Amy Barger and Lisa Sporer led the Lady Eagles with 10 points each. Sporer also grabbed seven rebounds and dished out four assists.

Jill Halapin was the game's top scorer with 25 for the Mountain Cats and teammates Sally Mosay and Bridget Hale added 23 and 18 points respectively.

The women now have a record of 12-11 overall and are 6-2 in the Pennsylvania Conference Western Division. That puts

them in third place overall behind second place IUP at 7-2. Clarion is on top of the division at 8-1.

The champion of the Western Division automatically goes to the PSAC playoffs, while the team that finishes second wins the right to host a playoff game.

"Right now our chances are slim to none for winning the conference," said Scarfo. "Now we're aiming to finish second and host the playoffs."

Meanwhile, the Lady Eagles must set their sights on Wednesday for a game against Edinboro. Scarfo is confident the team will come away with a victory.

"We should be alright if we can control Montique Wade and Karen Urey. If we can keep Wade under her regular average of 24 points and control Urey, which we didn't do last time we played them, then we should do fine," said Scarfo.

Edinboro comes to town Wednesday for a 6 p.m. game in Thomas Field House.

Sportsline

The week's sporting events

Wednesday, February 17th

Women's Basketball--vs. Edinboro 6 p.m.
Men's Basketball--vs. Edinboro 8 p.m.

Saturday, February 20th

Wrestling--vs. Penn State 8 p.m.
Women's Basketball--at California 6 p.m.
Men's Basketball--at California 8 p.m.
Women's Gymnastics-- at U.S. Military Academy w/Ursinus 2 p.m.

Monday, February 22nd

Men's Basketball-- at Millersville 8 p.m.

Watch Friday's
Eagle Eye for
a preview of
Saturday's big
EWL wrestling
match versus
Penn State

Announcements

Sophomores

Looking for summer employment with a challenge? Check out Army ROTC Basic Camp with no obligation. See CPL Pearsall in Bentley AROTC Office. Phone 2301.

AXP

Brothers of the Alpha Chi Rho fraternity will be in the lobbies of Smith, Mac, North, and High Halls on Thurs., Feb. 18 at 9:30 p.m. Come down to see what AXP is about without any obligations.

ΑΣΦ Open Smoker

Alpha Sigma Phi fraternity is holding a rush function on Wed., Feb. 17 at 8 p.m. at "The Manor," 603 Bellefonte Ave. Rides leave the dorms at 7:45 p.m. A Fraternity to Better the Man.

Small Clubs

Attention all small clubs and recognized organizations of the SCC. Please have an officer contact Troy Weaver, vice president of the SCC. He would like a list of all clubs, organizations and advisors by Feb. 19. Any questions, please get in touch with Troy Weaver.

Biology Club

There will be an emergency meeting of the Biology Club Wed., Feb. 17 at 7 p.m. in the Reading Reference Room of Ulmer. The meeting is pertaining to the Pittsburgh Zoo trip. All members and anyone interested should attend the meeting.

From the Newman Center

Newman Center Retreat: Mar. 18-20 (registration due Feb. 26) at Bethany Center in Clearfield County. The topic is "Building Community: From Pilgrims and Strangers to Followers and Friends," by Dr. Megan McKenna. The retreat is open to all students, faculty, and others, and transportation is provided. For further information, please call 748-8592.

Newman Center Planning Meeting: Sun., Feb. 21, at 6 p.m. for Overnight Retreat on April 8-9. Give a talk, lead a discussion, or be on the food committee.

Correction: Students and faculty are welcome to attend Ash Wednesday Services at I.C. Church: 8 a.m. Mass, 11 a.m. Word Service, 6 p.m. Mass (note change from last week's ad). Also at St. Agnes: 9 a.m. and 7 p.m. Masses.

Newman Center: Applications are now available for students who wish to live there in 1988-89. Call 748-8592 for more information.

Atten. Havenscope Members

There will be a mandatory meeting of all members this Thurs., Feb. 18 at 1 p.m. in the TV Studio. Some important issues will be discussed. New members are more than welcome.

Atten. All Education Majors

Student PSEA meeting will be held Thurs., Feb. 18 at 8:30 p.m. in Robinson 213. Improve your resume and help out a worthwhile organization at the same time.

NCPA Educational Consortium Interviews

Fifty school districts will conduct individual interviews and eight districts will have information sessions at Kehr Union Building at Bloomsburg University, Tues., Apr. 26. Review school districts' teaching needs and sign-up in LHU Career Planning and Placement Office, Smith Hall, for an interview time. Each candidate may schedule two districts- an interview at 1:30 and 2 p.m. You must provide your own transportation.

Bike Club

There will be a Bike Club meeting on Tues., Feb. 16 at 7:30 p.m. in Raub 206. Topics to be covered: Mt. Bike race, jersey/tights orders, X-Country Ski Trip.

Spring '88 Grads

Applications for graduation must be submitted to the Academic Affairs Window, Sullivan 207, by Tues., Feb 23.

CRUISE SHIPS

NOW HIRING M/F
Summer & Career Opportunities (Will Train). Excellent pay plus world travel. Hawaii, Bahamas, Caribbean, etc. **CALL NOW: 206-736-0775 Ext. 321J**

AIDS Support Group to Meet

The AIDS resource, information, and support group will meet tonight in the Community Room of the James V. Brown Library, 19 E. 4th St., Williamsport. The meeting will be at 7 p.m.

For additional information, please call 327-3442. All inquiries will be held in the strictest confidence.


Hallmark
Derr's Stationary
21 E. Main Street, Lock Haven
748-5812

Temporary Help Wanted

Light office and phone work. Flexible day and evening hours. Phone 726-4953. Located at Bald Eagle Township Building--only a short drive away!

Wanted: Secretary for Lock Haven law firm.
Summer employment from May through August 1988. Starting date flexible. Shorthand transcription required. Typing required. Word Processing ability desirable. Please send resume to Snowiss, Steinberg, & Faulkner, C/O Lewis Steinberg, PO Box 5, Lock Haven, PA 17745.

The SCC Social Committee proudly presents:
Pink Floyd: The Wall
February 18 & 18 at 8 pm in the Lower Level the PUB.
Validated I.D. REQUIRED!

PICK YOUR OWN PRICE
Jerry's since 1947
ON ALL WINTER CLOTHING
OPEN Thursday & Friday until 9 pm
Corner of Church & Grove Sts. 748-3491

After the LHU matmen SOAR over the Penn State Nittany Lions on Feb., 20, at 8 pm, in Thomas Fieldhouse, come to the SCC "Late Skate." Sat., Feb. 20, from 11 pm to 2 am, at Magic River Skateland, 501 E. Walnut Street (3 blocks down from Kmart). Free admission with validated I.D., skate rental 75¢. D.J. Sterling "Chilly" White.

