

LOCK HAVEN EAGLE

Persons Union Building
Lock Haven University
Lock Haven University
17745



UNIVERSITY EYE

VOLUME 32 □ NO. 3 □ 6 PAGES
FRIDAY, FEBRUARY 13, 1985

Black History Month features variety of campus events

Food, fashion, music, dance highlight month



Mr. Robert D. Lynch, Affirmative Action Officer and Assistant to the Vice President for Administration, is looking forward to a successful Black History Month.

photo by Tim Sporcic

A variety of events are being scheduled on the Lock Haven University campus in celebration of February being Black History Month.

On Saturday, February 16, a Greek "Step Show" will be held in Rogers Gym beginning at 3:30 p.m. A "Step Show", according to Mr. Robert D. Lynch, Affirmative Action Officer and Assistant to the Vice President for Administration, is a dance contest of sorts between black fraternities and sororities on other college campuses. Lock Haven University's one black fraternity, Kappa Alpha Psi, has invited Greek Organizations from Penn State, Cheyney, Indiana University of Pennsylvania, East Stroudsburg, Trenton State and the University of Pittsburgh to come and perform.

On Thursday, February 21st, the students of LHU will enjoy a "Soul Meal" during regular dinner hours in Bentley Dining Hall. The meal will feature a variety of "soul foods" and will be free to all students holding a valid meal ticket. Community members who wish to come and sample the cuisine will be charged \$2.35 for all they can eat.

On Saturday, February 23rd, a Fashion Show will be held beginning at 4:00 p.m. in Bentley Hall. Last year, a similar show was enjoyed by a modest number of students and faculty, who watched several thousand dollars' worth of clothes modeled.

There is no charge for the Fashion Show,

but the Human Relations Dinner which will directly follow may be attended by reservation only. Reservations and information may be obtained from Mr. Robert Lynch at (717) 893-2322.

The featured speaker at the Human Relations Dinner will be Nikki Giovanni, who has been called the "Princess of Black Poetry." Ms. Giovanni brings to her poetry and her lectures some of the collected experiences of being Black, being a woman, a mother, an individual. She has been critically acclaimed for her books and albums, as well as for a syndicated column, "One Woman's Voice."

Mr. Lynch is quick to remind that the dinner, as well as all of the events he is overseeing this month, "is not a black program. It's a community program." Additionally, he feels that such programs are helping LHU to "go in the right direction" in terms of black student enrollment and retention.

Capping off Black History Month at the Haven will be a concert entitled "Ragtime from Joplin to Jelly Roll," given by concert pianist Gary Boerckel, who is also the Chairman of the Music Department at Lycoming College. Thousands of Pennsylvania from Philadelphia to Lake Erie have delighted to Dr. Boerckel's jazz and ragtime repertoire. The date for this concert is tentatively set for February 28th in Sloan Auditorium.

Court upholds fraternity appeal

By Kim Wilkinson

After close to a year of hearings and court deliberations, the Alpha Chi Rho fraternity has been informed that the appeal against their purchase of a South Fairview home for a fraternity house has been upheld, according to Alpha Chi Rho founder Kevin Campbell.

Despite the decision by the court, Campbell explained that the Brothers are still optimistic about receiving approval to buy the home. He said the fraternity is prepared to continue to battle in another manner.

The fraternity had received Zoning Board approval to buy the house on South Fairview Street last spring. Shortly after the decision was made, neighbors filed the appeal.

The AXP brothers received word Monday that the neighbors won their appeal.

Robert L. Mullen, a professor at Lock Haven University, was a member of the group who filed the appeal.

He said the appeal was based on the fact that the area is not zoned for fraternity houses, therefore the decision goes against the law.

Mullen said, "My only concern is that the laws be abided by."

He also added that after consulting three different attorneys, he learned that the pro-

perty value of the area could decrease a minimum of 20%.

According to Campbell, the decision took longer to make because the local judge removed himself from the case and the case was sent to Bloomsburg.

There are several routes of action that the fraternity could take, according to Campbell, but as of yet they are not ready to reveal what that action will be.

One would be to go to the Zoning Board to get a variance. Campbell said the decision would most likely not be the same as last year because the composition of the board has changed.

AXP is the only fraternity on campus that doesn't have a house.

Campbell said, "It hasn't hurt us yet; we're easily as strong as the other fraternities on campus."

"The biggest assets of getting a house is unity and a central location for the brothers," he said.

"We're under the impression that the neighbors are waiting for our enthusiasm to dissipate, but it won't," Campbell said.

He added, "We've come this far and we're going to go to whatever extent it takes."

Barrett is Cadet of the Week

By Laura Smith

A sophomore, Gary Barrett Jr. from McEntire Hall was chosen as last week's R.O.T.C. Cadet-of-the-week. Barrett was chosen as Cadet-of-the-week for his proficiency in Marching and Proper Military dress. Barrett is a sociology major who is unsure of his future plans in the military. He is also involved in the Rangers club.

Another sophomore, Alan Stathan, an off campus student was chosen as this week's

Cadet-of-the-week. Stathan a management science major is a member of the Ranger club, the ROTC color guard, and activities fund committee. He is also a Lambda Chi Alpha brother and a member of the track team. Stathan was chosen as Cadet-of-the-week because of his active participation and interest in this week's General Military Skill Lab. He is now in the process of applying for an ROTC scholarship.

Inside

National Honor inductees, pg. 3.
A Bouquet of a play, pg. 5.
Sports Spotlight, pg. 6.
Wrestlers ready for Lions, pg. 7.



Intro. classes worthy

Every student at Lock Haven University has had to deal with the term "general education" at one time or another in their college career. The purpose of the general education courses never seemed to clear to me as an undergraduate. To some, I suppose, they never will.

I can recall the freshman and sophomore years when it was so important to ask older friends which courses were the easiest. Which professor, we would ask, was the least difficult? The purpose was never to attain knowledge, but to fight the seemingly impossible task of just getting by.

Those years of undergraduate study are quickly coming to an end and, like many seniors, I have saved the introductory classes for last. My intention was to save these courses for the final semester so that my schedule would not be difficult. I am thankful now that I saved those classes, for, as an older student, I am finally appreciating the rewards of expanding my knowledge into areas of which I know very little.

There seems to be a great risk involved with taking a course in which we know nothing. Rare, however, is the college student who knows music so well that he can recognize the sections of an orchestra. With little natural ability in the art field, students are too inhibited to allow themselves the chance to learn.

My point is that these courses are not geared for the student who already possesses the knowledge in that area of study. These courses are designed to allow average students the opportunity to gain knowledge in an area of which we know very little. By asking others which courses or professors are the easiest, we are cutting our education short.

I would not condone holding off on these introductory courses until the final semester of study. For some, however, the true content of these courses may not be appreciated until late in the collegiate experience.

For the underclassmen who have not yet taken these courses, do yourself a favor and take advantage of these introductory courses. It may be the last opportunity you have to expand your knowledge into these worlds.

Kevin

LETTER TO THE EDITOR

Dear Editor,

The LHU Women's Soccer Club has been in existence for four years. It's time that this program be promoted to varsity status. The addition of another women's sport would be attractive to female athletes not participating in a fall sport, and would enhance the already prestigious athletic program here at LHU.

As a result of its club status, the program has a hard time acquiring highly skilled athletes. The Pennsylvania Interscholastic Athletic Association (PIAA) now holds women's soccer championships. With varsity status, our program would be more alluring to talented athletes playing high-school soccer.

Quite a few graduating high-school seniors have expressed interest in LHU and its soccer program, but they are tentative about attending because the program does not possess varsity recognition. These athletes could also be valuable assets to the spring sports programs as well.

The sport would in no way be a threat to other fall women's sports. It would be ludicrous for a field hockey recruit, who played four years of high-school varsity and was selected to all-star status, to play college soccer in lieu of field hockey.

It is obvious that this program could be beneficial to the Athletic Department as a varsity sport. The Administration should evaluate this program for its importance to

the athletic program and the community of LHU as a varsity sport. In addition, this program needs the support of the student body. You can help by signing the petitions that are going around to promote this sport to varsity status, and/or sending your opinions to Dr. Craig Willis. I would also like your thoughts on women's soccer. You can call me at 893-3244, or write me-Box 41 Woolridge Hall. Your input is greatly appreciated.

Scott Wagner

(Editor's Note: The letter to the Editor is a privilege granted to the general public to comment on issues or respond to statements published in the newspaper. A response made toward an individual or organization will include the author's name and phone number. This policy has been enacted to protect the individuals or organizations from anonymous accusations. Please include your name and phone number when submitting a Letter to the Editor and be aware that deadlines for the Tuesday edition is Monday at noon, and the deadline for the Friday edition is Wednesday at noon.)

Announcements

Diplomacy fans and fantasy role-playing gamers, I am interested in getting a group together. Call Tim at 3186.

Applications for hall counselors has been extended from the 18th to Feb. 25th. Applicants are still needed.

Learn to ace an essay exam! Mrs. Carolyn Perry, director of the Writing Center will give tips to help you write a more effective essay. Tuesday, 6 p.m. in the Gross Hall Recreation Room.

Come play VOLLEYBALL! Every Friday night at 8:00 p.m. in Zimmerli Gymnasium. Sponsored by New Life Christian Fellowship.

Attention all Rushes!!! Rush Orientation -Tuesday February 19, 1985, 7:00 p.m. held at the Eagles Nest in bottom of the PUB. Please attend - it will be fun!

Applications are now being taken for the Summer Upward Bound Tutor Counselor positions. Applications must have completed their Sophomore year and preferably have had experience working with adolescents. Program for counselors will run from Wednesday, June 26th to Saturday, August 3rd. Applications forms are available in Akeley Bldg., Room 112.

Inquiries for Commission Agent for Travel Agency in New York City. If interested, call collect, person to person 1(212) 662-2400.

ATTENTION: THOSE GOING ON RETREAT TO FR. TAMALIS' CABIN FEB. 22-23: Meet Fri., 22, at 5 p.m. in parking area between Bentley and Sullivan. Bring sleeping bag or pillow and blankets, towel, swim suit for jacuzzi. Please give \$10 deposit to Sr. Maureen by Mon, Feb. 18.

STATE NEWMAN SPRING CONFERENCE (PNP) When: April 12-14 (register by Feb. 20 at Newman Center, 748-8592) where: Temple University, Philadelphia, theme: living in a Global Village, excellent speakers and activities. Transportation provided. More details at Newman Center, 445 W. Main.

FACULTY AND MARRIED STUDENTS: Come to a marriage enrichment program on developing family strengths at St. Agnes Parish Center on Sun., Feb. 24, from 1:30-4 p.m. Register by Feb. 17 by calling St. Agnes (748-4594) or Newman Center (748-8592).

VOLLEYBALL! Friday, February 15, 8:00 -9:30 p.m. Zimmerli Gym 2. All Welcome, sponsored by Woolridge Hall.

ATTENTION: FACULTY AND MARRIED STUDENTS--A marriage enrichment program on developing family strengths will be held at St. Agnes Parish Center (3 E. Walnut St.) on Sun., Feb. 24, from 1:30-4 p.m. Register by Feb. 17 by calling St. Agnes rectory (748-4594) or Newman Center (748-8592).

THE FREDERICK COUNTY BOARD OF EDUCATION, Frederick, MD, will be conducting on-campus interviews for May graduates Thursday, February 14, 1985. Positions are available in the following: Elementary, Special Ed., and Secondary Education. Please sign up in the Career Planning and Placement Office, Smith Hall.

ALL STUDENTS, FACULTY & STAFF: The American Camping Association, New England Section, operates a FREE referral service for over 100 accredited resident camps. Applications may be secured in the Career Planning and Placement Office, Smith Hall, Ground Floor.

Eagle Eye Staff Meeting Tuesday 1 p.m.

Any student interested in working for the Eagle Eye is urged to come to this meeting. We will welcome any writing or artistic interest. The Eagle Eye is located in room 3 at the bottom of the PUB. Be a part of our staff.

EAGLE



EYE

The Eagle Eye is a student produced bi-weekly newspaper published in the Parsons Union Building Lock Haven University Lock Haven, Pennsylvania 17745 Telephone (717) 893-2334

Letters and comments are encouraged. All letters submitted for publication must be signed and accompanied with the writer's telephone number. The Eagle Eye reserves the right to edit letters for length and libelous material.

The opinions expressed on the editorial page are not necessarily those of the administration, faculty, or student body.

- Editors-In-Chief----- Dave Prusak
- Kevin Campbell
- News Editor----- Kim Wilkinson
- Assistant News Editor-- Kirsten T. Jorgensen
- Sports Editor----- Dave Walter
- Entertainment Editor--- Andy Ashenfelter
- Features Editor----- Jay Zech
- Photography Editor----- Tim Sporic
- Staff Artist----- Tina Rhoades
- Business Manager----- Sandy Houser
- Advertising Director---- Tannya Baskovich
- Advertising Sales----- Connie Smith
- Typesetters----- Karolee Stahl
- Connie Sisko
- Jill Van DeVort
- Colleen Stanford
- Adviser----- Dr. Douglas Campbell



Those initiated into the national honor fraternity, Delta Psi Kappa, include first row (l. to r.): Lisa Kulsar and Tina Gabert; second row (l. to r.): Douglas Kiss, Brad Bemserfer, and Fatina Rhoades.

Eight students are initiated in national honor fraternity

During an initiation banquet held recently in Lock Haven, eight people were initiated into Delta Psi Kappa. A national honor fraternity, Delta Psi Kappa membership is open to those students and professionals in the areas of health, physical education, and recreation who have attained high standards in scholarship and service.

Advisors for Lock Haven University Chapter are Dr. Dora Van Dine, and Dr. Lucienne DeWette of the College of Health

Physical Education, Recreation and Athletics.

Those persons initiated include the following students: juniors, Brad Bemserfer, Tina Gabert, Douglas Kiss, Lisa Kulsar, Fatina Rhoades; seniors, Roxanne Murgia, and Rick Philbin.

Also initiated was Cindy Wolford, a 1975 graduate of Lock Haven University, and a doctoral student at the Pennsylvania State University.

Five area high school jazz bands will perform in competition

By Mike Bender

Five area high school jazz bands will compete in the First Annual "Sound of Jazz" competition at the Sloan Fine Arts Center, on March 9.

The festival includes bands from Lock Haven, Bellefonte, State College, Bald Eagle Area, and Altoona high schools, and will feature a performance by the LHU Jazz/Rock Ensemble.

The event, sponsored by the local chapter of Kappa Kappa Psi, national honorary band fraternity, will be judged through an adjudication process with each band being rated as good, excellent, or outstanding, according to Paul Davis, festival chairman.

Each band will receive a participation trophy, along with a trophy going to the outstanding soloist from each musical section.

"The idea of the whole festival is to promote musicianship not only on campus, but also throughout the community," said Davis.

"With the high quality of musicianship we have coming into this initial festival, it should be a great success," he continued.

Davis said three qualified judges, Jim Chapman, Lou Feist, and Dr. Steven

Wallace, will judge the competition.

Chapman, a saxophonist, is a graduate of the Little Creek School of Music of the United States Navy. He currently is the soprano saxophonist with the nationally known dixie-land band, The Tarnished Six, which works out of the State College/Bellefonte area.

Wallace, the director of bands at Bloomsburg University, taught instrumental music at the high school level before joining the Bloomsburg music staff. He is the director of both the concert and studio bands there, and has earned his doctor of education from the Pennsylvania State University.

Feist, a jazz drummer in the area for the past thirty-five years, works with a number of high school bands on drumming techniques. He was the drummer for the award winning Johnny Nicolosi Big Bands of the late 1950's and 1960's, and performs professionally on weekends.

Each of the three judges will be a featured soloist with the LHU jazz group.

The competition will begin at 6:30 p.m. Tickets will be available at the door for \$1.50.

Stage being set for Spring play

The stage is being set for *The Last Bouquet*, this Spring's mainstage production at Lock Haven University. The drama will be presented March 21st through the 23rd in Sloan Theatre on the LHU campus.

The Last Bouquet, by Dennis Holt, is a solemn tale set in a Hungarian prison during the Revolution of the late 1950's. Josef Marko's, played by senior Journalism major Andrew Ashenfelter, is a freedom fighter serving his last day in prison. Through a series of flashbacks, the audience views the courage and sincerity of the rebels, as well as the ruthless and persistent tactics of the Hungarian regime is squelching the revolution.

This production represents somewhat of a departure for the LHU stage for many reasons. The most dramatic of these is the set design, which will focus on three main areas of stage action, with the audience interwoven through the action. There will be audience seating in the auditorium, in the orchestra pit, and even on stage with the actors.

Additionally, the paucity of scenery and the unique use of lighting and music to represent seasonal changes are likely to make *The Last Bouquet* a landmark production.

The play will be directed by faculty member Dr. Deny's J. Gary, who has directed such mainstage productions in the recent past as *Dr. Knock, Blithe Spirit*, and *I Never Sang For My Father*.

Produced by the Department of Speech Communication/Theatre and the University Players, *The Last Bouquet* will begin at 8:00 p.m. each night. Admission for the

general public will be \$2.50. Students with some form of ID pay only \$1.00, and Lock Haven University students with validated ID's are admitted free of charge.

The students who make up the cast of *The Last Bouquet* are as follows:

Andrew Ashenfelter, a senior Journalism major from Chalfont, PA, who has written, directed and acted in many University Players productions.

Kevin Lafferty, a senior Special Education major now residing in Lock Haven, has acted in productions for three years on the LHU stage.

William Grieb, a Business Computer Science major from Mill Hall is a sophomore acting in his second mainstage play.

Randy Smith is a junior Speech Communications major from Centre Hall.

Lori Miller, a freshman from Warren, is also appearing for the second time in a major University Players production.

Wayne Harvey, a junior English major from Cogan Station, has appeared in many productions.

Sara Patterson is a freshman from Bloomsburg, whose major is undeclared.

Thomas Yost is a freshman Theatre major from Lock Haven.

Cheryl Wisecup is a freshman majoring in Health, Physical Education and Recreation.

The innovative set design is by John B. Gordon, Chairman of the Department of Speech Communication/Theatre, who has designed sets for all of the LHU productions for the past fifteen years, as well as directed community theatre in Lock Haven.

University is named regional center for teaching mathematics program

Lock Haven University has been named a regional center for a program sponsored by the Department of Education entitled "Diagnostic and Prescriptive Mathematics." The program was established to disseminate materials and strategies for teaching mathematics through in-service programs for area public school teachers and through university courses.

Dr. Gerald Cierpilowski, a professor in the department of professional studies in the College of Education, is the regional representative for this Central Pennsylvania area, and the "tie" to Harrisburg for the project.

"At the present time," Cierpilowski explained, "I'm working mainly with elementary and resource room teachers. We are focusing on helping kids of all ages who are having problems in mathematics—mainly arithmetic."

The long range goal of the program is to enable school district personnel to become instructors and disseminate the information on diagnostic and prescriptive mathematics.

During the past summer, Cierpilowski

conducted two clinics for teachers and has presented a workshop for teachers employed by BLAST (Intermediate Unit 17). A workshop consisting of two one-day sessions is scheduled in the future for teachers and administrators in all the school districts in I.U. 10.

The Diagnostic and Prescriptive Mathematics Center ties in directly with the newly implemented state-wide TELLS Program. Children can be identified in the TELLS Program as needing remedial help, and remedial activities and materials can be cross-referenced. "I help teachers and administrators find out why a student is having problems and then what to do to begin to alleviate the problem," said Cierpilowski. "Usually, we find a student has missed something along the way. Once the void is found, students make rapid progress."

Parents and teachers have been very supportive of the program.

Cierpilowski has been a faculty member at LHU since 1970.

Hair Concepts
wishes to cater to college students

Special Offer On Tuesdays And
Wednesdays \$5.00 For A Haircut

Open Tuesday until 8:00 and Wednesday until 5:00.

A name you know and can trust in Lock Haven

We carry Nexxus products

202 E. Main St.
748-3747



Tutorial service is for benefit of all students

By Jill A. Krueger

You have been studying for hours but something is not right. You understand most of the material but you just cannot grasp the total idea.

Students at Lock Haven University have several options to choose from when deciding where to get that extra help with a subject that does not come easy.

First, a student could go to the instructor. This would be a viable option if you were the only student and the instructor had nothing to do but spend "free nights" with you.

Second, a student could go to the library. This would also be an acceptable solution. However, if you don't know what to do with the textbook, how would you ever cope with stacks of other resources?

After a student checks these and, no doubt, countless other "options", reality sets in - you know you need help and help can be found. It can be found in the basement of Smith Hall...Smith G-11 to be exact.

The Tutorial Service is free to all University students. From 8 a.m. to 4 p.m. a student may fill out a request for a qualified tutor in one or more subject areas.

"Some students are not even aware of this service," said Don Pearman, Director of the Tutorial Center. "We welcome anyone who feels a need for tutoring as well as those who would like to become a tutor."

The Tutorial Service is funded in part by the state educational system and also by the Student Co-operative Council. It was started in 1975 when the Educational Opportunity Program - Act 101 was instated.

During the Fall 1984 semester, there were 22 tutors.

Qualifications for a tutor include at least 3.0 grade point average in the tutored subject and positive recommendations from instructors in the subject area.

"I enjoy being a tutor and it helps me by reinforcing basic material that I need to know," said Robert Shipman Jr., a tutor and physics major.

Last semester, 192 students were tutored and most were happy with the results though one negative response is that they can only be tutored one hour each week due to lack of funding according to Pearman.

"I'm hoping to petition more funding from the SCC for this semester for this semester," Pearman said. "Tutors have been conducting small group tutoring sessions to give students more time."

Students can get tutored in most subjects offered at Lock Haven University, including all levels of Physics, Earth Science, State and Local Government, Music, and languages.

"I strongly recommend the service," said Dale Cooper, Physics Professor. "It's obvious that the service works. I support it 100 percent."



Don Pearman, Director of Tutorial Services, explains that tutor services are available to Lock Haven students needing help in studies.

Placement Office aids in search of jobs

By Jill A. Krueger

Resumes are an important part of the job search and most graduating students should be researching resources and beginning to write their resumes.

There are four basic types of resumes, according to Herbert Larson, Director of the Placement Office at Lock Haven University. These types include chronological, functional, analytical and informal.

"A combination of chronological and functional resumes works best for the person graduating from college," Larson said.

A chronological resume is most common and is easy to prepare. The chronological format is best suited to the college graduate and the candidate with limited experience, because the most valuable asset is the college degree, said Larson. Current experience should appear next on the chronological format. Headings should appear listing the career objective, education, work experience, awards and achievements.

The functional resume stresses the candidate's abilities and other related job experience. A functional format is used by a candidate with experience, namely several different related jobs with increasing responsibilities.

An analytical resume stresses skills, abilities and achievements. It is more directly related to a specific job being sought.

The informal resume is the least used and may be imaginative and creative. This format may be appropriate when the position being sought is one in which creative skills are an integral part of the job.

"Most resumes for the recent graduate should only be one page long, but two pages are acceptable when the student has relevant work experience," Larson said.

Resumes should be concise and accurate. The Placement Office is open from 8

a.m. to 4 p.m. and Larson is available to help students prepare for the job search.

"Most students should start preparing resumes four months before graduation,"

Larson said. "I look forward to helping prospective graduates prepare for the careers that they've been working hard to attain."

Benefits of off-campus housing show relief to the purse for students

By Cindi Gillmor

More and more Lock Haven students are moving off campus every year. What is the big trend? Could it be that living off campus really is cheaper and more beneficial to all students?

It has been estimated that living off campus is \$200 cheaper than living in a dorm. Also, the price of living in a dorm went up \$60 this semester, according to housing.

In actuality, by living off campus, students really are living on their own and being independent, except maybe for a phone call to mom asking her for a few bucks now and then.

It is a great experience to live off campus because of the responsibilities students will gain, which will be essential in later life.

Some of the responsibilities will include: cooking, cleaning, grocery shopping, budgeting money, and one of the biggest

responsibilities will be learning how to pay the bills.

Living off campus also gives students some privacy and a feeling of living in a home instead of being cramped up in a single room. Also, it is nice to have home cooked meals instead of having to eat in Bentley night after night.

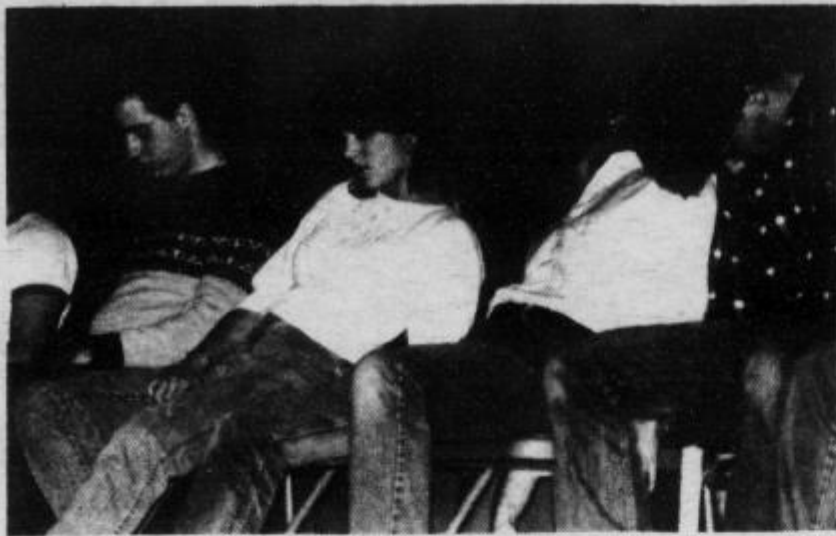
Rules do not exist when living off campus. There is no curfew when living in a house. Students will never have any problems getting into their house- unless, of course, they lose their key.

Also, no quiet hours exist while living off campus. If students want to be noisy at nine o'clock at night they can be.

Many students may have a few doubts about moving off campus, everyone does. Hopefully, after reading this article, students will realize that being off campus offers many advantages, financially and socially.

NOW
WHAT?





Are these students sleeping through another class? LHU students are still talking about the hypnotizing performance of Gil Eagles.

photo by Tim Sporic

Heavy Metal not for Disney fans

By Matt Conner

An R-rated animated feature film, *Heavy Metal* is definitely not for Disney enthusiasts, but with elements like sex, violence, acid rock, and dope humor, it will probably appeal to a lot of college students.

Directed by Ivan (Mentballs, Stripes, Ghostbusters) Reitman, this "erotic sci-fi-horror-cartoon" features the music of Black Sabbath and Blue Oyster Cult and employs the visual styles of Heavy Metal artists Richard Corben, Angus McKie, and Berni Wright.

Fans of Heavy Metal music (and subscribers to the nationally syndicated magazine on which the film was based) will no doubt appreciate the film's plot - an episodic series of stories concerning the influence of Evil (played throughout the film by a glowing green orb) on various

creatures of the past and future.

Some of the more interesting of these "episodes" involve a pair of zonked-out Cheech and Chong-type aliens, and an earthling who wonders if her robot-lover is circumcized.

Written by Dan Goldberg and Len Blum, the film is packed full of decapitations, and "gives prominent play to voluptuous female nudes."

Released in the summer of 1981, *Heavy Metal* got a variety of mixed reviews that ranged from "the bumper version of *Star Wars*" to "a comparatively painless piece of entertainment...not without wit or sophistication..." It grossed \$16 million at the box-office.

Sponsored by the SCC, *Heavy Metal* will be shown in Price Auditorium this Saturday and Sunday at 8 p.m.

A STEP BEYOND SCIENCE FICTION.

FEATURING SONGS BY
BLACK SABBATH
BLUE OYSTER CULT
CHEAP TRICK
DEVO
DONALD FAGER
DON FELDER
GRAND FUNK
RAILROAD
SABRETT WAGNER
JOURNEY
HAZARETH
STEVE NICKS
RIGGS
TRUST

COLUMBIA PICTURES PRESENTS
AN IVAN REITMAN - LEONARD ROGEL PRODUCTION
HEAVY METAL

MICHAEL GROSS ELNER BERNSTEIN JESS LEONARD ROGEL
DAN GOLDBERG & LEN BLUM GUY CLARK RICHARD CORBEN, ANGUS MCKIE,
DAN O'BANNON, THOMAS WURKENTEN, BERNI WRIGHTSON
GERALD POTTERTON IVAN REITMAN

RESTRICTED
COLUMBIA PICTURES
The trademark "Heavy Metal" is owned by Production Line, Inc.

"Comic, terrifying and erotic."
— TIME MAGAZINE

Saturday
Sunday
Price
8:00

Alcohol awareness is urged

By Karl Boltz

As a child, I remember waking late at night, shivering beneath my covers. I listened as my mother pleaded with my stepfather to leave us alone and go away before she would call the police. I remember climbing to my bedroom window and watching as the police arrived to talk to them. I remember this happening several times.

I was young. I didn't understand my stepfather's unpredictable and inconsistent behavior. He seemed so good to me at times, taking me to ball games and teaching me tricks. At other times I remember broken promises. I remember seeing hope in my mother's eyes as she tried to help him, as she accepted and believed in him.

I can remember seeing and feeling his sickness whenever he came near; deep down I loved him but it was locked beneath my fear of him.

I felt confused and upset. I didn't understand alcoholism. I didn't know how its destructive grip was going to lead toward tragedy. Day after day I prayed for an end to his drinking. I knew it wasn't easy for him, but somehow it all seemed so preventable.

Several years have passed now, but I will always be reminded of this experience. My mother was killed by this man, as an alcoholic.

For a child living with an alcoholic, life may appear unpredictable, inconsistent, arbitrary and chaotic. It can be a frightening and physically dangerous experience. The effects on the child can last forever and can destroy any chance of a normal life.

Children of alcoholics are also at considerably high risk for becoming alcoholics themselves, often times without ever connecting their suffering as child and their familial alcoholism.

We still need to learn a lot more about biological factors and longitudinal studies to find ways to help prevent alcoholism and ways to detect individuals at exceptionally high risk of becoming alcoholics.

We need to be aware of the impact alcoholism can have on our children and learn to avoid it.

C.A.M.P.S. will be beginning a Children of Alcoholics Support Group. Further information on this will be provided in the near future, or contact C.A.M.P.S. at 2379.



Festival Travel Agency
2797 Broadway
New York, NY 10025

Phone: (212) 662-2400
Call Person To Person Collect

Ask for Sam, a former LHU student
We help LHU students plan for
Spring/Summer International
Education

We are a full-service
Travel Agency

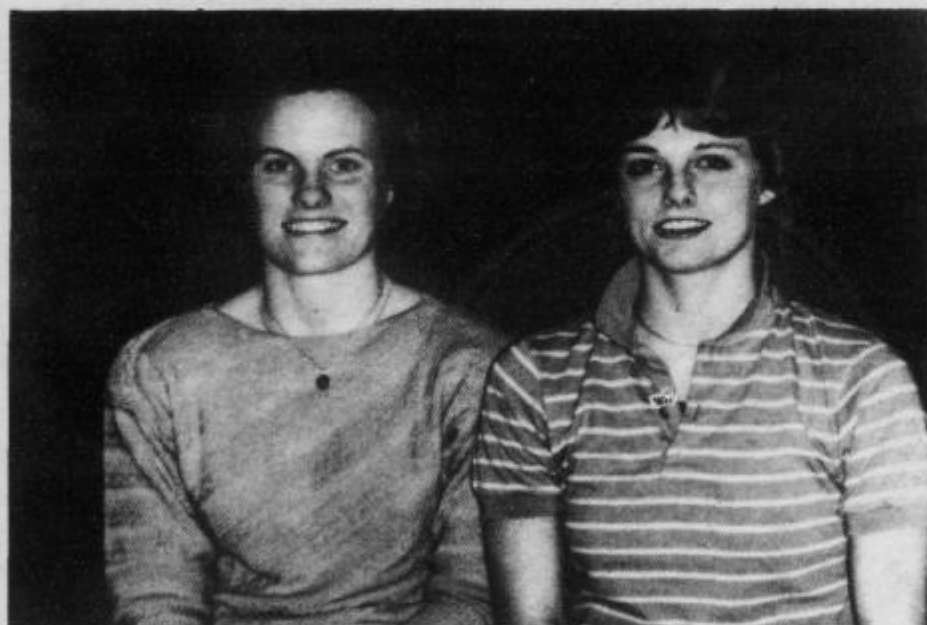
Sports Spotlight



Kevin Charney

Charney, a sophomore, paced the Bald Eagles basketball team with 22 points in a 87-82 lose to Edinboro last Saturday. Charney has been melting the nets in the past few weeks for hard-luck team.

photo by Tim Sporcic



Jan Pechart and Jackie Thomas

Pechart and Thomas, juniors for the 4-5-1 swim team, were triple winners in a 72-59 victory over Edinboro last Saturday. Pechart took firsts in the 200-yard butterfly and 100-yard butterfly in addition to swimming a leg on the winning relay team. Thomas won the 200-yard backstroke in addition to swimming a leg on the winning relay team.

Sports Schedule

Gymnastics

at Wilson Saturday 1 p.m.
vs. Pitt-Johnstown Monday 7 p.m.

Wrestling

at Penn State Saturday 2 p.m.

Women's Basketball

vs. Indiana Saturday 6 p.m.

Men's Basketball

vs Indiana Saturday 8 p.m.

Women's Swimming

PSAC Championships at Indiana February 21-23

Hockey team splits pair to up record to 3-1



Leading scorer Lenny Brockman had a goal in the hockey team's 6-5 win this weekend.

By Dave Walters

The Lock Haven University men's ice hockey club split their games this weekend to up their record to 3-1 at the Penn State Arena.

Leading scorer Lenny Brockman and the Bald Eagle stickmen will take to the ice this Sunday to face the Wizards for their fifth game of their Nittany Hockey League season.

This past Sunday, the Eagles captured a 6-5 victory over the Raiders.

Sophomore defenseman John Gridley lit up the scoreboard first for LHU. Gridley also had an assist for the winning cause.

The second goal came when a blistering shot by sophomore Lenny Brockman, who leads the team with six scores on the year, was saved by the opposing goalie, but forward Doug Rutter was there to pounce on the rebound and net the goal.

Brockman popped in the third goal after

getting an assist from Matt Stash near the midway point.

Chad Pesorchik and player president Doug Kiss came up with the fourth and fifth scores of the game. Their assists came from Gridley and Jim Gorse. The winning goal was scored by freshman Bob McGettigan. McGettigan took the puck from his own defensive zone after Brockman won the faceoff.

Freshman goalie Andy Heffron stopped 23 shots in all, four of which were bread aways.

The Eagles lost a close one to the Geohabs last Saturday, 3-2.

Brockman and Gridley did all of the teams scoring in the losing effort.

Brockman and his fellow teammates are looking for a student following for their games and anyone interested on going should contact Dan Lawson at 893-3420.

photo by Tim Sporcic

WLHC will be sponsoring a fan bus to the showdown between the Bald Eagle wrestlers and Penn State. The price is 3.00 per seat. Call 893-2212 to reserve your seat. The bus will leave from the front of the fieldhouse at 12:30.

THE ORIGINAL



Main St.

748-8027

Pizza-subs...

Delivery time

Monday 6:30 9:30
through 7:30 10:30
Saturday 8:30
plus 11:30 p.m.
Sunday 6:30, 7:30, 8:30
9:30 - Last delivery
closed at 10:00 p.m.

Lady Eagles shock Rock; move into first

By Karen Merlie

On Wednesday night, the Lady Eagles of Lock Haven were hot! They pulled off a big shocker over Slippery Rock, 71-59. They moved into first place, with a 14-8 overall record, and 6-2 in the Western Division of the PSAC. The Rock beat Lock Haven, 62-45, on January 23rd.

The Lady Eagles led by a score of 16-10 at the ten minute mark, and upped the lead to 30-16 at the half.

Tina Martin led the way with 11 first half points. Martin, who was voted PSAC player of the week, led all scores with 23 points. Martin went 7-14 from the field for a 50% showing in field goals.

Rounding out double-figures for the Lady Eagles were Donna Sergi and Helen Woltman with 17 and 10, respectively.

Woltman, Sergi, and Kuhn led the way with eight rebounds each.

For the losing team from Slippery Rock Diane Walker and Laurel Hielman led their team with 19 and 16 points. Walker was high in rebounds, also.

Coach, Fred Riley's team played like division leaders and were very pleased with their play.

Riley's team led from the very beginning and never slowed down the momentum.

The Eagles have won seven straight including Wednesday night's victory.

Sophomore guard, Lori Young, was dressed for the game, but didn't see any playing time.

The Lock Haven players said "Tonight we didn't need Young's assistance, but we will down the stretch."

Tina Martin needs 60 points to pass Doug LeGette's all-time scoring mark. Martin's stated in a past interview, I want to assist our team in any way."

On Monday night Lock Haven defeated Edinboro, for the second time in two days, this time by the score of 58-51.

Martin led all scores with 20 points, followed by Woltman's 13.

In a sloppy game for both teams, Lock Haven led by 12 at the half.

Edinboro refused to let down.

The closet they came was trailing by six points in the second half.

The Lady Eagles are home for the third straight time this week, playing host to the second place, team, Indiana of Pennsylvania on Saturday night at 6 p.m.



The Lady Eagles worked the Slippery Rock Rockettes for a shocking 71-59 win. The win moved the Lady Eagles into first place in the PSAC's Western Division.

The showdown: LH at PSU

By Dave Walters

The David and Goliath version of collegiate wrestling will take place tomorrow as the Bald Eagle wrestlers go up against the Nittany Lions of Penn State at Rec Hall at 2 p.m.

Penn State and LHU first met in 1942 and started meeting on a yearly basis in 1976 when the Eastern Wrestling League started.

Last year head coach Neil Turner's squad lost in front of a full house here at Lock Haven.

The Bald Eagles need a win against Penn State to have a chance at the EWL dual meet title. The Nittany Lions are ranked number one and LHU is number two in the east. PSU has an undefeated record in the league and the Bald Eagles have just one loss, that coming from West Virginia. Penn State defeated WVU 24-20 last Sunday.

"We usually have a large following, and in the past we've had a nice turnout at Rec Hall. Everyone can be assured to get a good seat because they can seat 8,000," said Turner. "All our guys are smart enough, they know what Penn State's guys have done, and they know what weights we have to do well in."

Coach Turner has his lineup set while Penn State's is still tentative. Here are the match-ups:

At 118, aggressive sophomore Dicky Howell (30-9) will face Nittany Lion Ken Chertow (22-12). Howell will have the responsibility of getting momentum moving in the direction of the Bald Eagles.

Freshman Jeff Husick (18-17-1) will take on PSU's 126 grappler Tim Flynn (27-4-1).

Willy Metzger (22-17) will battle against either John Manotti (27-11) or Scott Webster (15-9) at 134. The LHU matman will use his stragic ability to handle his Nittany Lion opponent.

Senior Tom Kreamer (24-10) will go up against Gary Kaschak (12-9) at 142. Kreamer has come through with many fine performances and a win at this weight will be valuable.

At 150, freshman Brad Lloyd (21-11-1) will duke it out with either Chris Bevilacqua (18-3) or backup Glenn Koser (2-4). Despite being a freshman, Lloyd has come through

in the clutch before, and hopes to do it again.

At 158, senior Bryon Benner will be matched up against either Bevilacqua or Penn State standout Chris Elinski (20-4). Benner will be put to the test at this weight.

Sophomore Jody Karam (31-7-1) will try to defend his impressive record against either Elinski or Mark Sidorak (13-15) at 167.

Junior Greg Wykoff (23-7-1) will face freshman Andy Voit (15-14) at 177. Wykoff's experience will give him the upper hand against the young wrestler.

At 190, senior Ty Hall (22-10-2) will clash with Mike Seckler (13-12). A win at this weight could be a deciding factor in the outcome of the match.

Number one ranked heavyweight Rick Peterson (33-3) will face number nine ranked Steve Sefter (12-7). Sefter and Petersen have been battling for years and this match could also decide who will be the victor.

If you want to see wrestling at its best, take a trip to Rec Hall tomorrow. Both the team and the coaches will appreciate student support.

Eagle boxers fight in Williamsport

Seven Bald-Eagle boxers participated in exhibition bouts before an appreciative audience at the Bethune-Douglas Community Center in Williamsport last evening. Four of Lock Haven's open division boxers, Tim Frymyer, 112; Martine Brewer, 139; John Morrin, 165; and Renny Dowdell, 190, all looked impressive in their bouts. Three novice boxers, Marcello Cancelli, 132; Barrett Lebin, 147; and George Fronjka, 182, also had their first taste of competition outside of the confines of the "Haven" boxing room.

The boxers competed against novice boxers from WACC and Lycoming College. "Taking everything into consideration, the boxers showed improvement since the Penn State competition, and are starting to round into competitive condition", commented Dr. Ken Cox.

The four open division boxers, Frymyer, Morrin, Brewer, and Dowdell are scheduled to compete in the Ram Invitational at West Chester University on Feb. 21st. Frymyer is a two-time All-American and currently the nation's (NCBA) top ranked 112 pounder, while rapidly improving Morrin is currently ranked number two among the 165 pounders.

Eagles drop another; winless in conference

By Scott Crispell

Slippery Rock visited Thomas Fieldhouse, Wednesday, and handed the Bald Eagles a 90-71 setback. Kevin Charney, who led the Lock Haven offense all season, continued to bewilder opposing defenses, as he poured in 20 points. Junior Price added 16 and Jeff Jackman chipped with 11. In the rebounding department, Harold Wells had 7 while Charney and Eric Hearn hauled in 5.

Two nights earlier, the Bald Eagles hosted Edinboro, but again away empty, as the "Fighting Scots" won, 87-82.

Cory Hand had the hot hand with 17 points. Charney and Price controlled the boards with 6 rebounds each.

With the two losses, Lock Haven is now 5-18 overall, and 0-8 in conference play.

The Bald Eagles final home game is tomorrow night at 8 p.m. against IUP. Lock Haven wraps up the season, Wednesday at California.

SPRINGBREAK

 AXP Florida Extravaganza
 Price Of Ticket \$1.50 Give Away!!!
 Winner Will Receive -- Hotel Accomodations
 and Plane Fare From Philadelphia
 Spring Break
 March 30 to April 6
 Trip for Two

ANNOUNCEMENTS (Cont. from pg 2)

 Students: x-country skis are available for your use. They can be rented for any length of time with a (\$10) refundable fee.

Skis can be rented in the lower level of the P.U.B. M-W-F 11-1p.m. or call 2461

 Students who have or would like a locker in the P.U.B. "must" register with the P.U.B. Administrator immediately. Contact 2461.

STUDENT RETREAT: Get away from campus to a beautiful spot in the woods. Get some perspective on your life.

TIME: Feb. 22-23

WITH: LHU and Lycoming students

LEADERS: Father Tamalis and Sister Maureen

COST: Donation (transportation provided)

Register by FEB 15; call Newman Center (748-8592).

ATTENTION: FACULTY AND MARRIED STUDENTS A marriage enrichment program on developing family strengths will be held at St. Agnes Parish Center (3 E. Walnut St.) on Sun., Feb. 24, from 1:30-4 p.m. Register by Feb. 17 by calling St. Agnes rectory (748-4594) or Newman Center (748-8592).

Ash Wednesday Service, Feb. 20, Ulmer Planetarium, 8:30 p.m., sponsored by Newman Community.

Applications are now available at the PUB Business Office for the position of student representative on the LHU Board of Trustees. The student Trustee is very important because the position allows for student input on crucial administrative decisions. The position of Trustee, appointed by the Governor of PA, would prove invaluable for future endeavors, and deserves consideration of all students who are genuinely concerned about the well being of Lock Haven University. Deadline for applications is February 15 at 4:00 pm. Return applications to the PUB Business Office. If you have any questions regarding the responsibility please call Matt Huber at 3180.

College Student Retreat

When: Feb. 22 (5 p.m.) -- Feb. 23 (return to L.H. by 3 p.m.)

Where: Fr. John Tamalis' cabin

Whom: L.H.U. and Lycoming students

Cost: Donation

Transportation and food provided.

Theme: The Christian Journey through life

Leaders: Fr. Tamalis and Sr. Maureen

Register by Feb. 15 at Newman Center (748-8592).

Ten dollars will secure your place at the retreat.

This will be returned (with interest) at the end of the retreat but forfeited if student does not show up for the retreat.

ROLLERSKATING -- sponsored by Newman

Center Sat., Feb. 16; details later.

NEWMAN ASH WEDNESDAY SERVICE: Wed., Feb. 20, Ulmer Planetarium, 8:30 p.m.

Tutors wanted in: Computer Science, Accounting, Physiology, Kinesiology, Economics, Geosciences, Philosophy. Require: 3.0 or above in subject area; Prefer work study, if not, campus employment. Inquire: G-11 Smith Mr. Donald Pearman 893-2457.

ATTENTION: The 2nd Annual WLHC-FM Airband contest will be coming Tuesday, Feb. 26th, 1985 at 7:30 pm. Top prize: \$75!! Listen for details on WLHC-FM 90.3 beginning Feb. 11th!!

Senate petitions are available in the S.C.C. Business office from 8-4. Petitions must be completed and submitted to Toddy Baney, S.C.C. vice-president, by 4:00 p.m., February 19.

Men's volley-ball organizing --Contact Mike Vargo at 3791.

Any journalism major interested in writing and broadcasting news for WLHC-Fm radio, please contact Marie at 748-4982.

Students wishing to help with advertising for WLHC, please contact Tony Leberto (748-5654).

FOUND: New text book in 211 Raub. Call 2331.

Business Week's Guide to Careers magazine, October & December 1984 issues, \$2.95 values, may be secured FREE in the Career Planning & Placement Center, Smith Hall, Ground Floor.

HAMILTON STORES: During the summer months, Hamilton Stores, Yellowstone National Park, has approximately 700 jobs available and try to fill these positions as soon after the first of the year as possible. Qualified applicants are considered on a first-come, first-served basis. Those interested should contact Hamilton Stores direct, by mail, for application materials. Write to Lori Dahl, Personnel Director, 226 E. Canon Perdido, P.O. Box 2700, Santa Barbara, CA 93120, phone 805-963-0701.

Faculty, Staff, Students: An Open Meeting with Dr. Craig Dean Willis will be held February 19 at 1:30 p.m. in Sloan Auditorium. You are invited to participate in a discussion of common interests and concerns about Lock Haven University.

Is There A Little "Boozer" In You? Mike Green, drug and alcohol education specialist at West Chester University provides insights and answers to this question in a presentation on February 20, 1985, 8 p.m. in Sloan Theatre. Mike is a product of the Pennsylvania State College System, where he was a star athlete and fraternity member. Come listen to Mike tell his story of alcohol and the college student.-sponsored by CAMPS

\$25 OFF
 ON JOSTENS GOLD COLLEGE RINGS.



See your Jostens representative.

2/25 &
 Date: 2/26 Time: 10 a.m. to 3 p.m.
 Place: Bookstore Deposit: \$12.00




©1984 Jostens, Inc. Payment plans available.

PRESIDENTS' DAYS SALE



Jenny's since 1947

"We Know They're Honest Prices -- Because You Pick Them Yourself!"

ALL WINTER MERCHANDISE
 You Name Your Price!!
 (No Reasonable Offer Refused)

Mens -- Womens

Knit Shirts -- Dress Shirts
 Sport Shirts Blouses
 Sweaters Sport Coats
 Ties Gloves Scarves
 Womens Cordoroy
 Wool Slax By Farah


YOU PICK THE PRICE!

Extra Special Woolrich Mens \$13.99 Chamois Shirts Womens \$12.99	Tuxedos 15% off We custom screen print
Extra Special Winter Coats Mens 60 - 75% off Womens	"more than a jean store" COR. CHURCH & GROVE STS OPEN Thurs. & Fri. Til 9 PM Mon., Tues., Wed., & Sat. Til 5 PM 748-4391 Free Parking