

# Eagles lay goose egg on Nittany Lions, 1-0

By Rocco Pallotto

The Bald Eagle soccer team, like all fine wines, continues to get better with age.

The LHU booters of head coach Michael Parker must have aged years in their big 1-0 victory Friday night over Division I powerhouse Penn State.

Senior co-captain Dave Lam picked up the game's only score as he tallied an unassisted goal off a corner kick just 6:15 into the game.

"A super all-around team performance," said Parker. "It looked like we just wanted to win a little more than Penn State did."

Assistant coach Mike Corney pointed out that Lam played a great second half. He also called attention to the fact that Sophomore Terry Flynn made an exceptional play in stopping a sure Nittany Lion goal in the waning minutes of the game, despite playing with a fractured toe.

"Bruce Cocker was unbelievable in the goal," continued Corney. Cocker registered 12 saves in the contest.

PSU head coach Walter Bahr remarked, "Lock Haven played a very good game. They came out ready to play. They went out there and really kept their composure."

"We tried to play too fast," said Bahr. "We weren't ready to play. You have to give credit to Lock Haven for taking the game away from us."

He also pointed out that the Bald Eagles forced his squad into too many mistakes, something Parker said that LHU would have to do to win earlier in the week. "We knew we were going to have our hands full and we certainly did," said Bahr.

The Eagles will be guarding against a let-down tonight as they travel to Cortland State for a 7:00 contest. LHU has never defeated Cortland State, on their home turf.

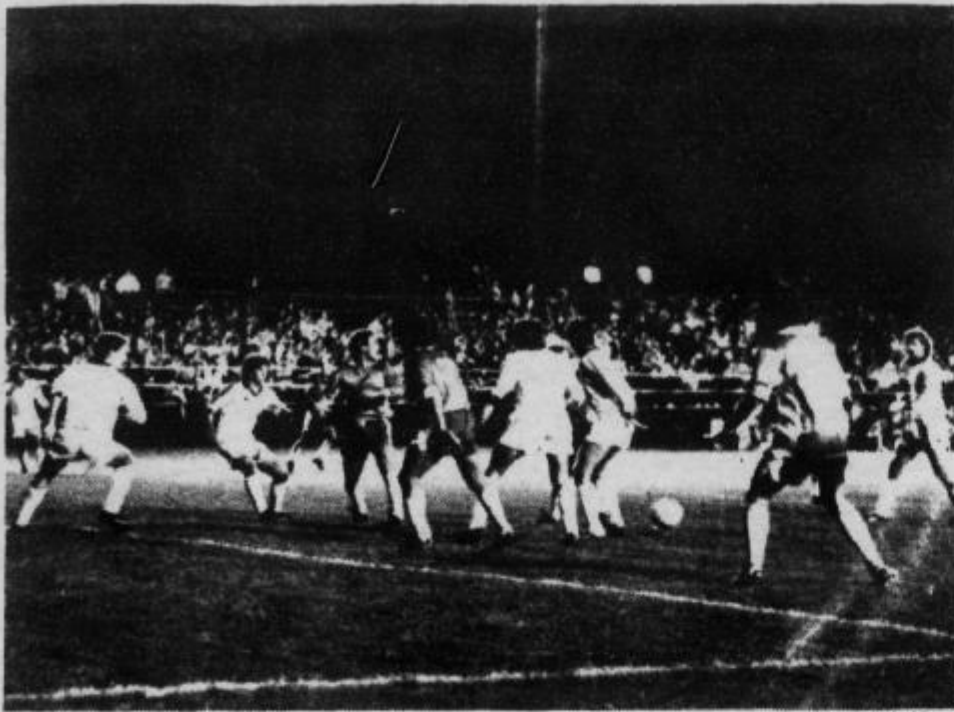


photo by Rick Hunt

The Bald Eagles of Lock Haven U. and the Nittany Lions of Penn State scramble for the ball in Friday night's showdown. Lock Haven came away with a 1-0 victory. The Bald Eagles have beaten Penn State twice in the last three years.

Archives & Records Centre  
J. I. S. C.  
Date \_\_\_\_\_  
Source: \_\_\_\_\_ (initial) \_\_\_\_\_

The Lock Haven University

# Eagle



# Eye

Lock Haven University  
Lock Haven, Pennsylvania  
17745

Volume 29 ★ No. 9 ★ 4 pages  
Tuesday, October 11, 1983

## Infirmary services student health needs

By Shawn Bingman

The Lock Haven University (LHU) infirmary offers many health services to students.

According to Elvera Crissman, nursing supervisor, some of the services offered by the physician and nurses at Glennon Infirmary are outpatient medical/injury treatment, notification of student's family if admitted to the hospital, allergy injections, apparatus such as crutches, ice packs, elastic bandages, venereal disease treatment and counseling. Appointments are also made by nurses for X-rays and lab work, and other referral and appointments made for surgeons, gynecologists, dentists, and allergy specialists are available.

Crissman said that the staff is able to fill prescriptions at the infirmary if the medication is available.

Crissman said that there is no charge to students for infirmary services, except for tuberculin tests for which there is a charge of 25 cents. The money collected is sent to the university Revenue Office.

According to Dean of Students, Dr. George Rhodes, approximately nine out of the 14 universities in the system do not have an infirmary fee. Rhodes does not foresee a fee in the future. "As long as we can maintain the service we're giving and the budget remains the same, I don't foresee the next year to be a fee," said Rhodes.

According to Mr. George Marshall, vice-president for the administration, the infirmary and staff are operating with approximately a \$100,000 budget with the state paying for the bulk of the sum.

Crissman said that more nurses are needed to help the 50-60 students that are seen a

day Monday through Friday. "We used to be open 112 hours a week, now they, (the 50-60 student) come in when we work 40 hours a week. It's very difficult for two nurses to handle that much traffic," said Crissman.

Rhodes said that the infirmary hours could not be increased. "With the staff that we have, and no chance to increase the budget, we couldn't increase the hours unless we were to go to a fee. It seems to be working quite satisfactory with our proximity with the hospital," said Rhodes.

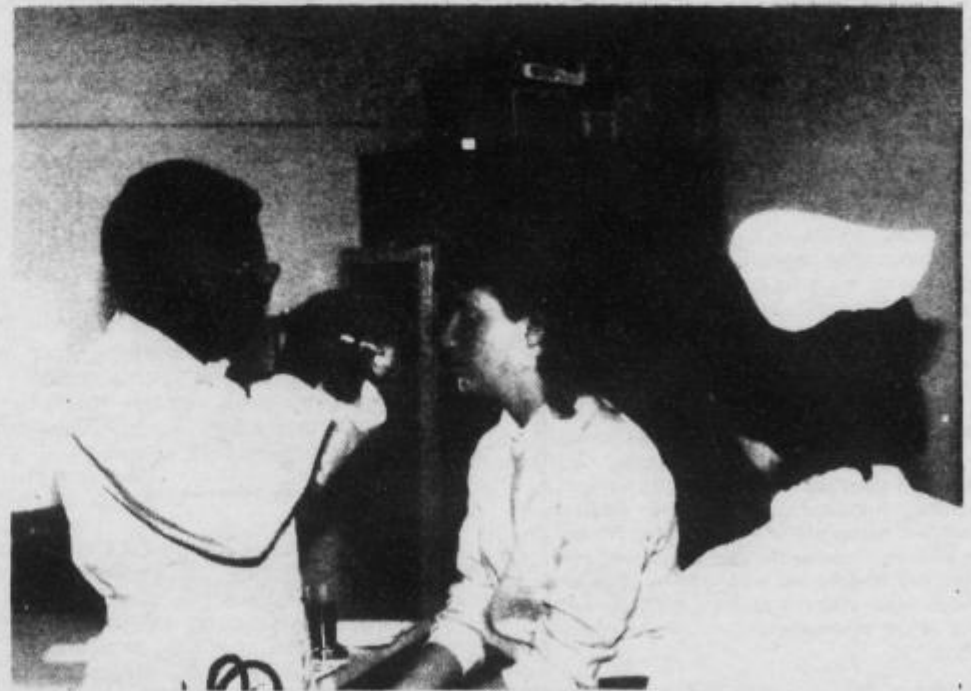
Crissman said that the students are very friendly and easy to deal with.

Crissman said that there have not been any problems so far. She said that there was an epidemic in the 1968-1969 school year with 800 students ill. Specimens were sent to a lab, but technologists were unable to determine what was causing the illnesses. Crissman said that in the event of an epidemic, the nurses work 16 hours a day.

Crissman said that the medical director for the infirmary is Dr. John Crisanti. Dr. Clayton Crowder and Dr. Rani Kumar, from Lock Haven Hospital Emergency Room, alternate in treating students at the infirmary. The physicians are available from 9 a.m. to noon, Monday through Friday.

If anyone is seriously ill, they can be hospitalized or they can go to their family physician. Also if there is a serious injury, they can be treated at the infirmary.

Crissman said that one misconception students have is that the infirmary only treats on campus students. In reality, the infirmary also services off-campus and commuter students.



Glennon Infirmary offers a wide range of health services to on and off-campus students as well as commuter students.

Valid ID. Required.

## VOTE

### SCC Senate Elections

PUB Lobby for Off Campus: 11 a.m. to 1 p.m.

In the Lobby of:

McEntire-Russell 6:00-6:30 p.m.	High-Woolridge 5:30-6:00 p.m. North-Smith 5:00-5:30 p.m.
---------------------------------	---

# Editorial

## Turn on the PUB to 90.3 FM

Throughout the semester and the better part of last year, the Eagle Eye has published numerous editorials on student apathy. In fact, while walking through the Parson Union Building (PUB) the other day I came face to face with a sign that basically, asked students to get involved with student government or, as the sign stated, remained apathetic.

I'm sorry to say ladies and gentlemen of the student cooperative council that you have also exhibited your own form of apathy or perhaps all out of neglect of student run operation...nay, numerous student run operations. But to focus on one.

To be blunt, don't you think that it is a shame that the student cooperative council, an organization formed to serve the student body, would fail to allow the broadcasts of the campus radio station (WLHC-FM) in the student union building.

C'mon, you can't say that every effort is being made to provide the students with this service. How often have I seen employees or even members of the SCC change stations on the radio in the lower level of the PUB and tune in WPBZ—the local radio station—or at times I've heard the broadcasts of other college radio stations come through the speaker system.

I am not trying to debate the case of whether or not the campus radio station is worth listening to or not but, a student government should support a student organization in a student owned union building instead of allowing employees or other students to interfere.

C'mon SCC, if you don't want to earn the apathetic label you'll put that radio dial in the PUB on 90.3 FM.

Afterall, if you don't get involved...who will?

## Announcements

The English, Journalism, and Philosophy Department will sponsor a bus trip to New York City on Saturday, October 22. Cost is \$18.00 roundtrip - open to all. Paid reservations are now being accepted. See Ann Peter in Raub 302 (893-2174).

The Lock Haven University women's cross-country invites all Alumnae and Friends to run in the 5K (3.1 mile) race on October 15 at 2:00. The race will end at Jack Memorial Stadium and finish during the homecoming football game. Any local runners who want to compete should call Coach Straley at 893-2102 for additional information.

The Eagle Eye is a student-produced bi-weekly newspaper published in the lower level of the Parsons Union Building, Lock Haven University, Lock Haven PA. 17745. Telephone (717) 893-2334. Letters and comments are encouraged. All letters submitted for publication must be signed, but names will be withheld upon request. The Eagle Eye reserves the right to edit letters for length and libelous material. The opinions expressed on the editorial page are not necessarily those of the administration, faculty or student body.

Editors-in-Chief	Martin Pflieger Chris Brooks
News Editors	Holly Williams Kim Wilkinson Kevin Campbell
Sports Editor	Dave Prusak
Ass't Sports Editor	Steve Coffman
Features Editor	Gerard Snyder
Opinion Page Editor	Maryanne Sarik
Graphics Editor	Sandy Houser
Business Manager	Aimee Kalnoskas
Advertising Manager	Gayle Sidelnick
Entertainment Editor	Andy Ashenfelter
Advisor	Dr. Douglas Campbell

Attention December Graduates! We are currently petitioning for a Graduation ceremony to be held in December 83. Please look for sign up sheets in various buildings on campus. Please sign these petitions, it's about time we get some credit for attending school.

To the person who picked up a lavender jacket at Lambda Chi Alpha on Thursday night, September 29, please at least return what was attached to the top pocket. Much sentimental value. Please return to 413 McEntire. Phone 3697.

The Music Department is sponsoring a Student Music Recital today at 12:30 p.m. in Sloan 336. Participants include Mark Smith, Pianist and Brian Arndt, Tenor Soloist. Everyone is invited to attend.

Students interested in joining Psi Chi the National Honor Society for Psychology, may submit their applications to any of the professors of the psychology department.

To be eligible you must have completed at least 15 credit hours in Psychology and have an overall grade point average of at least 3.0 and pay a 25 dollar initiation fee.

To apply, submit a list of courses, grades and credit hours completed in Psychology and list the Psych. courses in which you are currently enrolled.

**HELP WANTED:** Student(s) to tutor pre-calculus mathematics and do office work for the Mathematics Service Division. Contact Carol Rehn, Akeley 104.



## LETTERS

### SCC remarks clarified

Dear Editors:

Your article about President Willis' "open meeting" held on October 6 includes a summary of my remarks which does not accurately reflect the major concern that I thought I presented. Perhaps the misunderstanding arose because my comments lacked clarity. Whatever the reason, I wish to note that I did *not* address the issue of SCC autonomy *in general*, but focused instead on just one feature of that autonomy—management of the Parsons Union Building.

The undeniably useful lessons learned by students as they shoulder full responsibility for operating the PUB are no longer, in my opinion, worth the "costs" incurred. SCC officials could and should devote the hundreds (thousands?) of management hours involved annually to educational endeavors more advantageously suited to their needs and skills. A professional director, supervised by the University's Vice President for Administration and acting in consultation with a student advisory board, could provide a much needed consistency and continuity in policies which would, hopefully, avoid many past errors and could do wonders for the battered morale of PUB employees. I don't see how a director possessing the requisite experience and ability can perform to his own or anyone

else's satisfaction under the existing arrangements. Every year he must take orders, not just recommendations and requests, from a new slate of officers. Those officers, with few exceptions, have never managed anything in the business world, yet must take a sudden quantum leap into the supervision of everything related to a sizeable and complicated enterprise. Such procedures too often seem to result in confrontation and confusion among the participants rather than in an enlightening managerial experience.

In no way do I intend to imply any criticism of the many SCC officials who, over the years, have done their damndest to discharge effectively an onerous and perhaps unwisely delegated responsibility. My objections are to the PUB's administrative structure.

I offer my comments in the hope of generating some productive discussion about a concept and a practice which, I am convinced, have exhibited in recent years too many unacceptable deficiencies. The consideration of other aspects of SCC autonomy I leave gladly to other interested parties.

Sincerely,  
Donald Day  
Professor of History

### Criticize, but learn how to

Dear Editor,

Kurt Gallagher's "If Bugs Bunny Could Paint" in the Guest Column of the *Eagle Eye*, October 7, 1983 emits the unmistakable odor of burning books. Those of us who are studying the arts might do well to either answer Mr. Gallagher's charges or be very cautious about *what* we paint or write or say. I choose to do the former.

Mr. Gallagher seems bent on destroying, not criticizing; this must be the reason for his use of the Guest Column rather than writing as an art critic. Obviously, he does not understand that painting has to do with color, shape, and composition; it has almost nothing to do with the telling of a story which is the province of the writer and the illustrator.

A course in art history (which also teaches one how to look at a painting)

might be very useful to Mr. Gallagher. If he must criticize, he should learn how to do so properly.

As for Dr. Wisniewski's sabbatical, he earned it; that time was his to do with as he chose in the field of art. You will notice that I have used his correct title of doctor. If Mr. Gallagher is ever in the position to obtain his P.H.D., he will understand the kind of effort needed to gain the right to be called doctor.

Dr. Wisniewski is teaching "ART" at this institution because he was hired to do so by persons who know far more about the subject than Mr. Gallagher.

Please do not "criticize" any of my paintings. I am new at my art, and someone like Mr. Gallagher could destroy any creativity which I might possess.

Sincerely,  
Thomasine Meyer

### 'Cartoons' are fine art too

Dear Editor,

Kurt Gallagher's petty attack on Dr. Stan Wisniewski and his current exhibit of watercolors ("Eagle Eye," Oct. 7) is sophomoric in the purest meaning of the word.

Had Mr. Gallagher the sophistication which he pretends, he would easily have recognized that the paintings by Dr. Wisniewski now on display in the Sloan Gallery are as fine a collection of watercolors as you will see exhibited on any college campus, but unfortunately Mr. Gallagher only "has eyes but cannot see." He also has "a mouth which does not speak but only spouts garbage."

Apparently Mr. Gallagher has some kind of repressed sexual hangup which causes him to sputter incoherently whenever he encounters nudity; he apparently became so aroused by the small number of excellent nude studies that he failed to notice the large collection of very fine landscapes in the same exhibit. Perhaps Mr. Gallagher should go talk to someone in the

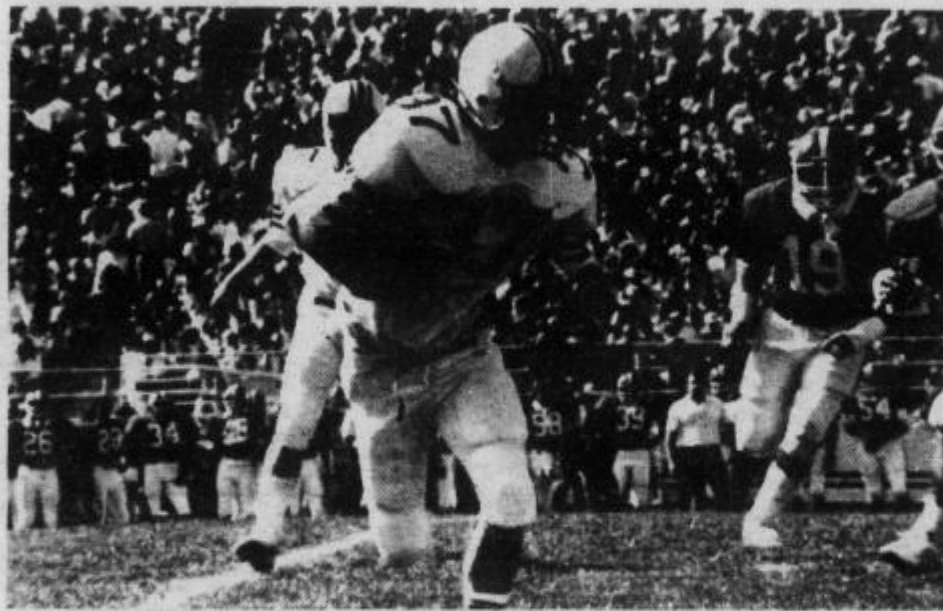
Psychology Department about his problem rather than take out his ignorant spite by writing a "critical" review on a subject about which he obviously knows nothing.

As hundreds of LHU students will testify, Dr. Wisniewski not only has masterly control of pencil and brush himself, but he also has the unique ability to teach others what they never thought possible—how to draw a reasonable and pleasing likeness of what they see. His teaching methods are so successful that even Mr. Gallagher might learn the impossible by taking the course.

Even though Dr. Wisniewski's drawing class would not improve Mr. Gallagher's writing deficiencies, it might encourage him to stop watching so many Saturday morning cartoons on TV and, at the very least, teach him the difference between art and prurience, something about which he is now obviously very confused.

Sincerely,  
Robert Coltrane

# Sports



Lock Haven Sophomore Jay Zech runs around right end on a sweep during Saturday's game at Shippensburg.

photo by Rick Hunt

## Eagle gridgers drop ball and game to Ship, 17-15

By Mark Mahoney

Shippensburg University quarterback Mark Beans threw two touchdown passes and the Red Raiders held on to defeat Lock Haven University by a score of 17-15 at Shippensburg on Saturday.

The Bald Eagles twice cut ten-point deficits to pull within range of winning, but could never take the lead in the ballgame.

Shippensburg scored first on a 22 yard field goal by Jeff Auker in the second quarter. Later in the same period, Beans hit Jeff Zubia with a 33 yard TD pass to make the score 10-0 with 6:46 remaining in the first half.

The opposing kickers, Auker and Lock Haven's Wayne Quinn, traded missed field goal attempts before the end of the half, so the score remained 10-0 at halftime.

The Bald Eagles began the second half by marching 77 yards on seven plays for a touchdown. Tailback Mike Kresovich, who had another spectacular rushing day, scored the touchdown on a four yard run. The score was set up by a 16 yard pass play from quarterback Doug Williams to tightend Pat Schell. This brought the Bald Eagles to within three points at 10-7.

Shippensburg scored again just minutes later, driving 83 yards on six plays. The Red Raiders tallied the six points on a TD pass

from Beans to Vince Hall. The score was 17-7.

Late in the third period, following a Ben Pavalko interception, the Bald Eagles scored on a 17 yard run by Rich Zalonis. Kresovich then ran for the two-point conversion to make it 17-15.

Neither team could manage to score in the final period, and the game ended 17-15.

Lock Haven fumbled the ball six times during the game, losing four of them. These turnovers resulted in 10 Shippensburg points.

Kresovich rushed for 180 yards on 20 carries (9 yards per carry) to raise his season total to 599 yards on 91 carries.

Williams was 9 for 20 for 78 yards through the air, and also carried the ball 15 times for 87 yards.

Sophomore cornerback Jere Warner intercepted a pass and recovered a fumble.

The Bald Eagles chalked up 396 yards in total offense compared to 349 for Shippensburg. It was the turnovers that spoiled opportunities for Lock Haven, though.

Lock Haven's record drops to 2-3 (0-2 in the conference), while Shippensburg is now 3-2.

Next Saturday is Homecoming at the Haven, with California University paying a visit to Jack Stadium for a 2 p.m. start.

## Derr keeps up hockey domination

By Dave Prusak

The Division II number one ranked Lock Haven University (LHU) women's field hockey team ran their unblemished record to 10-0 with a clean sweep of three Division I squads in Harrisonburg, Virginia this past weekend.

The universities of James Madison, Ohio State, and Richmond all fell to the Lady Eagles in a twenty-six hour time period.

On Friday, Sherry Derr scored a goal with forty seconds left in the first overtime period to give LHU a hard earned 2-1 victory over host James Madison University (JMU).

Darlene Birney gave the Lady Eagles a 1-0 halftime lead when she scored her first goal of the year, unassisted, at the 27:30 mark. JMU forced the overtime on a Joyce Metcalf goal with only 2:20 remaining in regulation time.

On Saturday, the University of Richmond and LHU engaged in a hard fought duel at high noon.

Once again it was Derr who emerged as the heroine. Just when it looked like LHU would have to go to overtime again, Derr scored with one minute remaining in regulation to give the Lady Eagles a 1-0 win.

The Lady Eagles made it a three game sweep in Virginia by dumping Ohio State University by a 2-0 score later Saturday afternoon.

Tracy Coates scored off a scramble in front of the cage at the 28:40 mark to give LHU a 1-0 halftime lead. The goal was

number four for Coates this year.

Derr then concluded a fine weekend for the team, as well as herself, by scoring off a Ginny Neiss feed at the 32:21 mark of the second half. The goal was number fourteen for Derr this year.

Following the three close games, LHU's Coates said, "Our opponents this weekend were good, but I felt Bloomsburg was stronger. I've never played two games in one day before."

"This weekend was great because it helped pull our team together. Now we're looking forward to playing Millersville on Wednesday at home," she added.

LHU coach Sharon Taylor said, "I thought my players adjusted well to the astroturf surface. Five of my players never played on astroturf before, and the rest had only slight experience in our 1981 championship win."

Taylor said, "I thought we played better on the astroturf than the other teams. Ohio State and James Madison were having problems handling the ball on the fast surface, and they play most of their games on it."

Taylor added, "Joan Laird had a super tournament. Patti Gillespie played well also. These three games are great to have behind us."

Tomorrow the Lady Eagles will host Millersville University at 3 p.m.

Coach Taylor said, "Millersville always gave us a good game in the past no matter how good we were. I expect more of the same tomorrow."

## Cope, Eagles run to victory; ladies suffer loss

By Christa Landas

The Lock Haven mens and womens cross-country teams were in action Saturday as both took on Binghamton State.

The men whitewashed BSU 19-36, while the women suffered a close 21-34 loss.

The LHU men's team captured four of the first five spots with John Cope running sixteen seconds faster than last week to take the meet in a time of 26:25. Only 49 seconds separated Lock Haven's top five finishers as Bud Murphy finished second, Frank Passaniti, 4th; Ken Toner, 5th; Dave Perry, 7th; Craig Yakscoe, 11th and Mike Eiden-

shink, 14th.

Coach Dolan singled out Cope and Toner for running a great race. "Both Eagles gutted it out and ran like they had to for the victory," said Dolan. "The whole team came through against a fine Binghamton squad. I was very happy about the victory."

The Bald Eagles have now completed their dual meet season at 5-1 and the regional conference race is next.

Before the conference meet, however, the ninth annual Alumni cross-country run will be held October 15. This race will decide

which Bald Eagles will go on to regionals. The top seven LHU finishers in the Alumni meet will precede to the conference championships.

The Bald Eagle women did not fare as well as the men against Binghamton. Alice Willis of Binghamton won the 3.1 mile race in a time of 18:31. Dawn Eid of LHU followed close behind to grab second place, but then came two more BSU women, which allowed BSU to place five of their runners before Lock Haven.

Other Bald Eagle finishers were; Sue Haseltine, 8th; Kathy Staib, 9th; Lynne

in the way of a perfect conference record.

Winners for the Lady Eagle netters in the Clarion victory were Lebert (6-0, 6-2), Murgia (4-6, 6-4, 6-0), Overdorf (6-0, 6-0), Starzan (6-4, 6-2), and Kelly Sherbine (6-3, 6-1). All three Lock Haven doubles teams were victorious. Lebert and Overdorf won by a 6-2, 6-0 count, while Roth and Murgia won by default. Starzan and Sherbine sealed the win by notching a 6-3, 6-1 triumph.

The team will travel to Millersville Wednesday and will host IUP Saturday in the last match of the conference schedule. Only one match, a tough non-conference showdown with powerful Bucknell, will be left on the schedule. Coach Miller does not anticipate any trouble with the two conference games, but is fearful of Bucknell.

"These first two meets will not be like Clarion, but we should win," the coach commented. "It would be nice to win them both, so we can go for broke against Bucknell."

Holly Reitzel, Lock Haven's number one singles player, is questionable for this week's action with a bad back. Edna Roth suffered a sprained ankle earlier, but is expected to play Wednesday.

Dintiman, 10th; Jo Kent, 11th and Alice Urban, 17th. Senior Louise Bashore was unable to compete for LHU, but Coach Straley observed that even if Bashore had been able to run it would not have made much difference, since Binghamton State just had too much up front for his Lady Eagles to overcome.

One high point for the women was the fact that they turned in better times than any other LHU squad that has negotiated the Bald Eagle's home course. The first five runners, Saturday, broke the old course record of 19:56 set in 1978.

**Alumni to Return for Homecoming**

Saturday, October 15th should be an enjoyable day for Alumni who plan to return to campus for Homecoming '83. Plans now become reality and the traditional parade, sporting events and renewing of old friendships should certainly make for an exciting time for everyone. The day officially begins at 9:00 a.m. with registration in the Alumni Room in Bentley Hall. Since one of the real pleasures for returning alumni is having the opportunity

to visit with emeritus faculty and staff, a special invitation has been sent this year to each one of our emeriti to join us on this special occasion. Following the parade, lunch and the day's sporting events, an alumni reception has been planned at Jack Stadium. A renewal of the traditional "cider pour" has been planned where alumni and guests will have the opportunity to socialize and reminisce to provide a fitting end to a grand day.

*Homecoming Queen and King*

Vote for your three favorite couples!

✪ ✪ ✪ Bentley Lounge - Before 5:00p.m.



Don't forget validated I.D.

*Vote Wednesday, October 12th*

**\* A Week of Specials \***

- Wed.- Veal Parmigiana and Tomato Sauce on roll. \$1.50
- Thurs.-Salisbury Steak on roll. \$1.50
- Fri.-Fried Fish Hoagie. \$1.35
- Mon.- Tomato Soup and Grilled Cheese. \$1.25
- Tues- Hot Roast Beef Sandwich Whipped Potatoes & Gravy. \$1.75

Like to gamble? see if you can pick the lucky number for a free meal!

**Breakfast Special of the Week**

2-5 inch Pancakes & Syrup and Small Coffee. 95¢

**Inquire About Baker's Dozen Card!**

Hours:  
M-F 7:30 a.m.- 11 p.m.  
S-S 11 a.m.- 12 p.m.

**ARE YOU SEXUALLY ACTIVE?**

Prevent **Untimely Pregnancies!** (There Are No Good Answers For Unwanted Pregnancies)

**BirthControl And Reproductive Health Care** 748-7716  
C.A.P.S. Family Planning Clinic 955 Bellfonte Ave. Lock Haven, Pa.

From the pages of **PENTHOUSE, HUSTLER, and OUI comes...**  
**Daddy's Little Girls**

ANNA VENTURA  
CHELSEA MANCHESTER

PRESENTED BY IN COLOR X CORPORATION

*Roxy*

**Last Three Nights**

\$3.00 Admission for this engagement  
\$3.00

**One Evening Show At 8:00p.m.**

• Absolutely no one Under 18 Will be Admitted

Starts Friday ••••• "Superman III"



Betty Irvin's

**Country Hair Stop**

221 1/2 E. Main St. Lock Haven Mon.-Fri. 9:30-12:00

200 N. Fairview St. Lock Haven Mon.-Fri. 3-8 p.m.

15% off all perms & haircuts with coupon 748-5224

Attention students, faculty, administration, and staff: All are welcome at the Wellness Programs.

**Spiritual Health** or why put make-up on a corpse? Wednesday, October 12, 7:30 p.m. Gross Hall rec room.

**Drug Awareness-** Thursday, October 13, 7:30 p.m. Raub 223. sponsored by Student Life Dept.

**Paper Back Junction**



**WE TRADE:**

Hardbacks Paperbacks  
Magazines Sheet Music

Store Coupons

Hours: Mon. - Thurs. 9-7  
Friday 9-9  
Saturday 9-Noon

343 E. Main ST.

*Clyde's Sporting Goods*

110 E. Main Street Lock Haven, Pa. 17745 748-3344

Printed Jerseys - Athletic Apparel - Plus shoes

**10% discount** on all regular price merchandise excludes sewing program with this coupon.

*Grand Re-Opening Continues*

*Jerry's Since 1947*

Jerry and Dave's  
"I Can Do Better Specials"

Tuesday only  
Mens Heavyweight-Prewash  
**Lee Jeans \$14.99**  
Straight Leg or Boot Cut

Wednesday only  
Womens Crewneck and V-neck Acrylic  
**Sweaters \$15.99**  
Reg. \$18.00

Thursday only  
Mens and Womens  
**Woolrich Chamois Shirts \$15.99**  
Values to \$27.00

Friday only  
Mens and Womens  
Woolrich Crewneck Shetland Wool  
**Sweaters \$9.99**

Saturday only  
Mens Heavyweight Prewash  
**Levi's Jeans \$14.99**

Register to WIN  
1 Years Supply of BLUE JEANS

"more than a jean store"  
COR. CHURCH & GROVE STS.  
Open Thurs. & Fri. till 9 p.m.  
M,T,W, & Sat. till 5 p.m.  
748-4391  
free parking