

FLOOD OF SUSQUEHANNA RIVER & FISHING CREEK

BLOOMSBURG AREA

MARCH 12-28-1936

FRONT





AERIAL OVER SUNKEN HEIGHTS SHOWING SO. BLOOMSBURG

R. P. D. Sheet Protector No. 1000  
R. P. D. Sheet Protector No. 1000  
R. P. D. Sheet Protector No. 1000  
R. P. D. Sheet Protector No. 1000

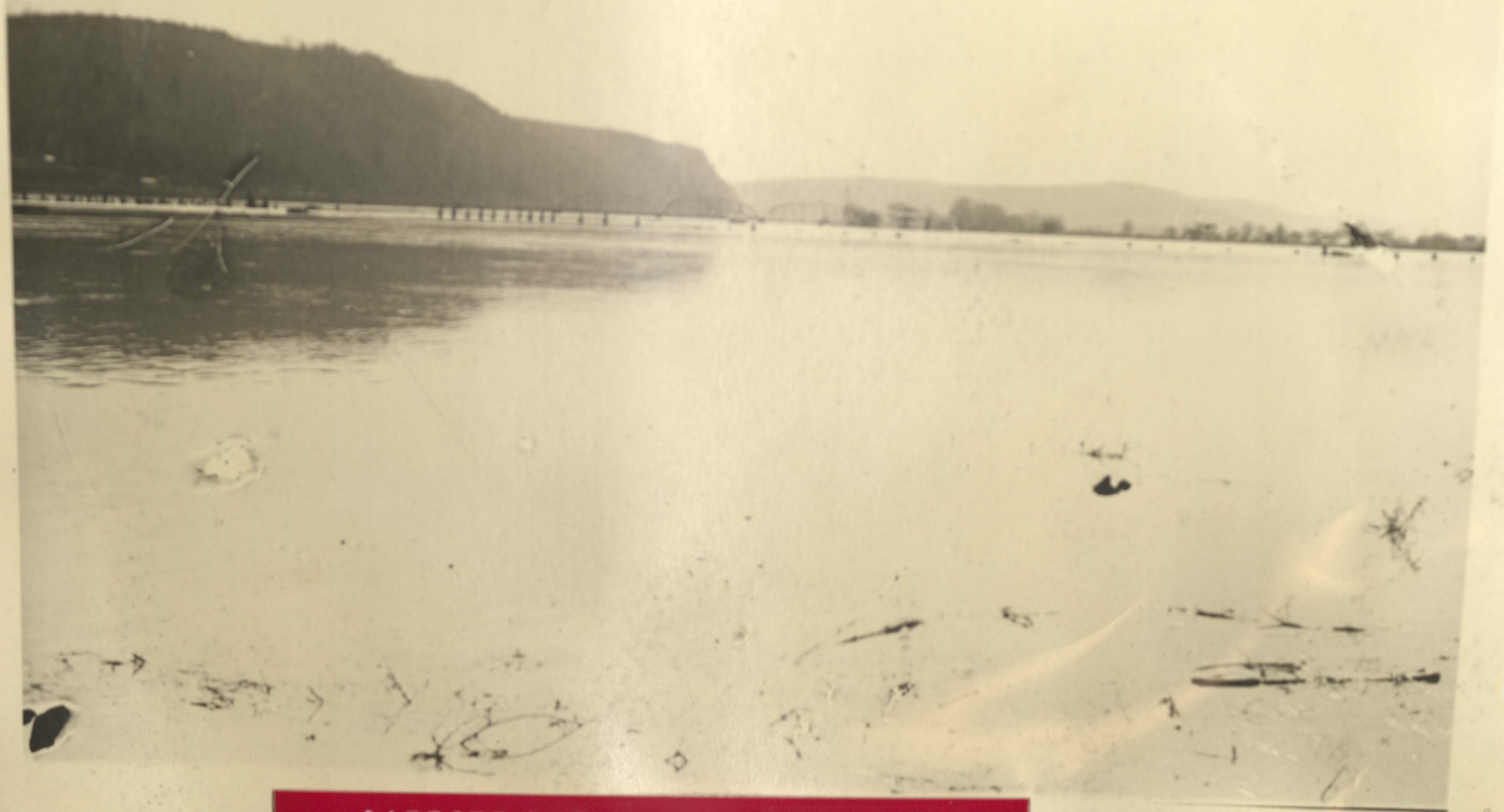




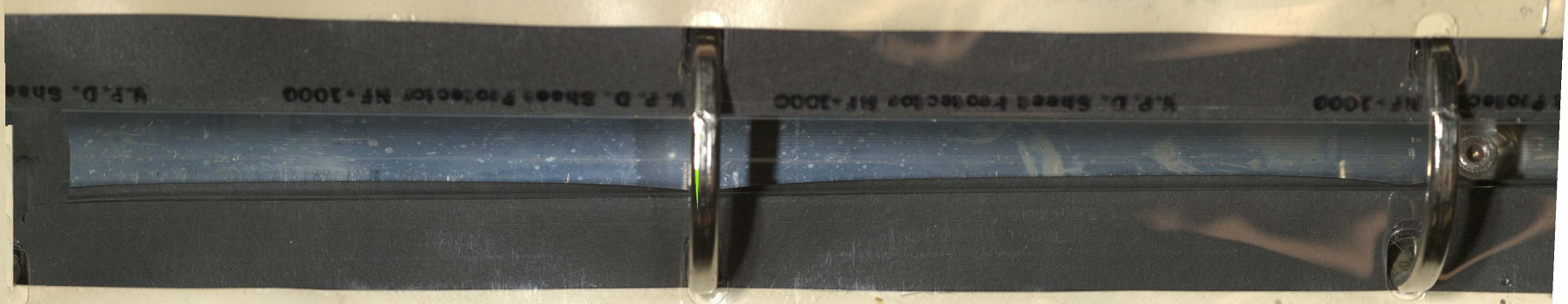
MOST OF SO. BLOOM SUBMERGED







AIRPORT AND R I V E R BECOME ONE



EAST HANGAR IN DISTANCE





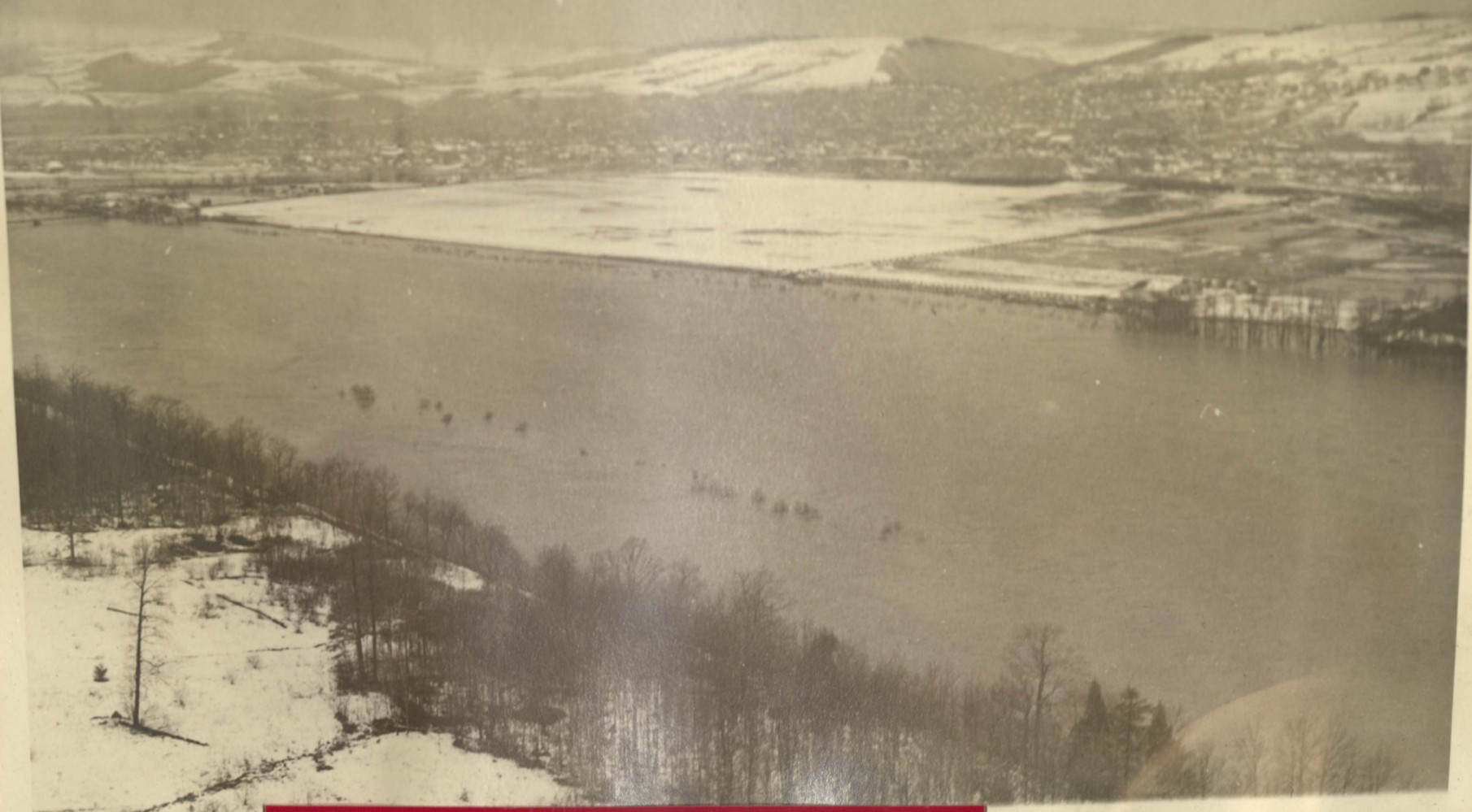
SCOUT BOAT APPROACHES MAIN HANGAR



AERIAL OVER RUPERT SHOWING EXTENT OF FLOODING

IN ASSISTANCE





RIVER CROSSING AIRPORT RD.



AIRPORT BEFORE RAINS CAME





RIVER AND CREEK ALMOST MEET

U. S. D. Shees Protector NF-1000  
U. S. D. Shees Protector NF-1000  
U. S. D. Shees Protector NF-1000







BOATHOUSE AT AIRPORT



SHOP AT AIRPORT



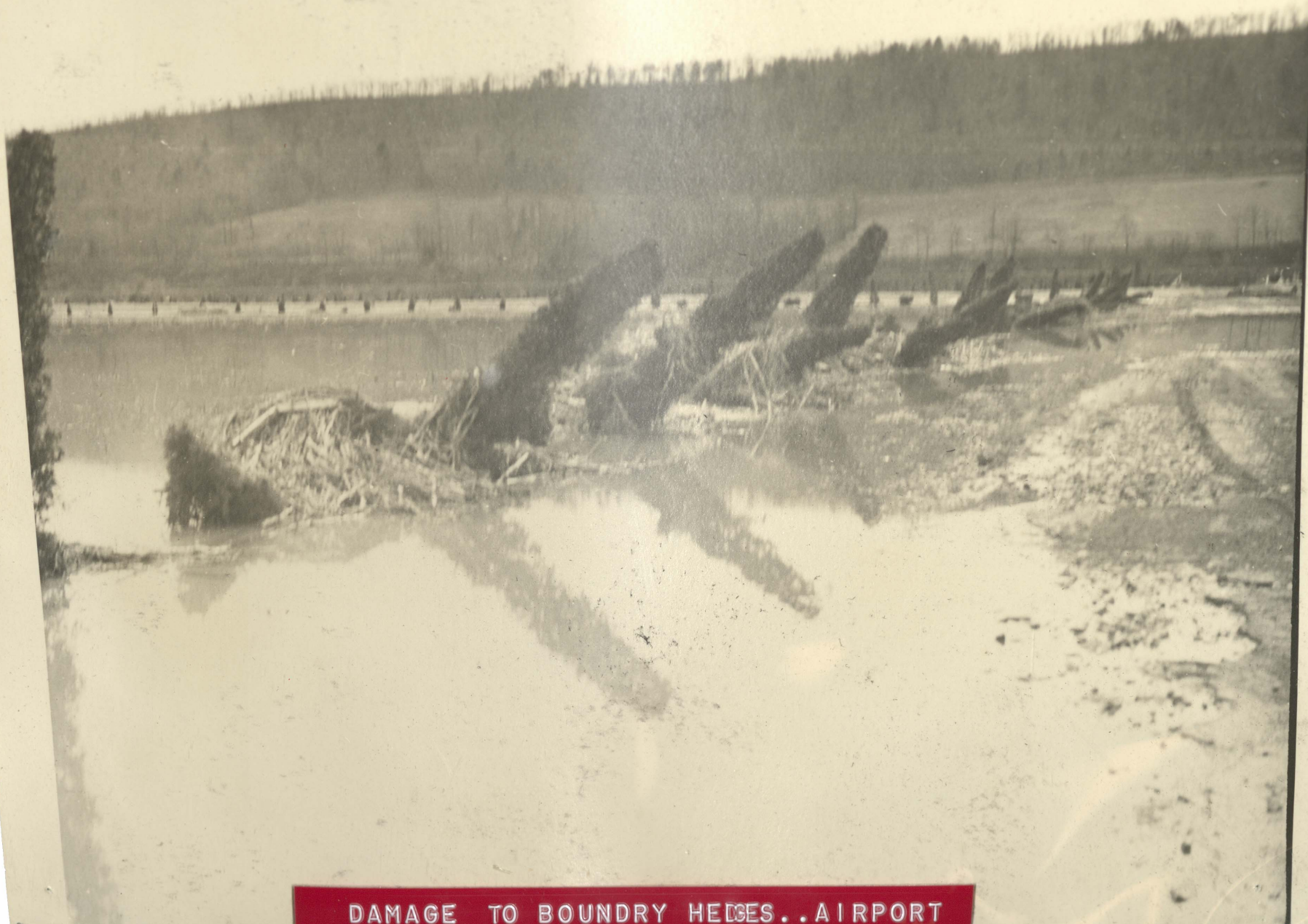


RIVER AT TOP..CREEK ATBOTTOM..CLOSING IN ON MAGEE RESIDENCE

FAIRGROUND/MAGEE PROPERTY







DAMAGE TO BOUNDRY HEDGES..AIRPORT



EAST HANGER IN BACKGROUND





BOAT HOUSE AT FLOOD HEIGHT



RIVER RECEDING..CLEAN-UP





RIVER FINALLY RECEDES