



**Alumni Are Urged To Return Early on Alumni Day, Saturday, April 26  
To Attend the Special Dedication Ceremonies**

- 9:00 a.m. - 2:00 p.m. — REGISTRATION FOR ALUMNI — Waller Hall.
- 9:00 a.m. - 10:30 a.m. — INFORMAL GET-TOGETHER FOR ALL ALUMNI AND FACULTY — Refreshments — Waller Hall Lobby.
- 10:30 a.m. - 10:50 a.m. — BAND CONCERT — Haas Auditorium.
- 10:50 a.m. - 11:00 a.m. — FACULTY PROCESSION — Begins at Andruss Library.
- 11:00 a.m. - 12:00 Noon — DEDICATION CONVOCATION — Haas Auditorium.
- 12:30 p.m. — LUNCHEON — College Commons — \$1.75 per person or Alumni Membership Card. (Tickets will be available near registration counter or in College Commons Lobby.)
- 1:30 p.m. — ANNUAL MEETING OF ALUMNI ASSOCIATION — College Commons
- \*3:00 p.m. — CLASS REUNIONS
- 3:30 p.m. - 5:00 p.m. — OPEN HOUSE IN RESIDENCE HALLS
- \*\*5:00 p.m. — SOCIAL HOUR AND DINNERS as scheduled by Reunion Classes.
- 8:15 p.m. — HAAS AUDITORIUM — THE BLOOMSBURG PLAYERS will present "My Sister Eileen," a three-act comedy by Joseph Fields and Jerome Chodorov. This is part of the Spring Arts Festival. Admission is \$1.00 per person or Alumni membership card.

**\* All Classes to 1908 inclusive — Meet in Husky Lounge Annex outside of College Store in Waller Hall.**

- |  |   |
|--|---|
| 1909 — Husky Lounge Annex outside of College Store in Waller Hall. | 1939 — Room 64, Hartline Science Center |
| 1914 — Husky Lounge Annex outside of College Store in Waller Hall. | 1944 — Room 65, Hartline Science Center |
| 1919 — Lobby of College Commons                                    | 1949 — Room 66, Hartline Science Center |
| 1924 — Ben Franklin Bldg., Room 7                                  | 1954 — Room 67, Hartline Science Center |
| 1929 — Faculty Lounge, Waller Hall                                 | 1959 — Room 69, Hartline Science Center |
| 1934 — Room 63, Hartline Science Center                            | 1964 — Room 72, Hartline Science Center |
|  | 1965 to Present — Alumni Room           |

FRIDAY EVENING, April 25, **Class of 1919** (Miss Catherine A. Reimard, 335 Jefferson St., Bloomsburg, Chm.)  
**50th Reunion** — Guests of Alumni Association at a dinner in College Commons, 7:00 p.m. Informal meeting in Husky Lounge Annex after dinner in Commons.

**\*\* Other Classes have made the following plans for Saturday, April 26:**

- 1909 — (Fred W. Diehl, 627 Bloom St., Danville, Pa. 18721, Chm.) Friday night at 7:00 p.m. College Commons—Attend 50 year Reunion Dinner.
- 1914 — (J. Howard Deily, 518 W. 3rd St., Bloomsburg, Chm.) No special plans.
- 1919 — Breakfast, Saturday, April 26 at 9:00 a.m., Magee Hotel.
- 1924 — (Edward F. Schuyler, 236 West Ridge Ave., Bloomsburg, Pa. 17815, Chm.) Friday, 7:00 p.m., Smorgasbord at Hotel Magee. Saturday, 8:00 a.m., Breakfast at Hotel Magee.
- 1929 — (Mrs. Nelson Stauffer, 88 John St., Kingston, Pa. 18704 and Mrs. Walter Covert, 20 Parrish St., Dallas, Pa. 18612, Co-chm.) No special plans.
- 1934 — (Mrs. Joseph McFadden, 154 East Fifth St., Bloomsburg, Pa. 17815, Chm.) Dinner at 5:30 p.m. at Keystone Room, Briar Heights Lodge.
- 1939 — (Willard A. Christian, Box 260, Bloomsburg State College, Chm.) Get-together from 4:00 p.m. at home of Mrs. Ruth Dugan Smeal, 740 South Market St., Bloomsburg. Dinner at 6:30 p.m. at Rainbow Room, Elks Club, Bloomsburg.
- 1944 — (Mrs. Carl Demitrikopoulos, Friar and Robin Lanes, Sherwood Village, Bloomsburg, Chm.) No special plans.
- 1949 — (Richard E. Grimes, 1723 Fulton St., Harrisburg, Pa. 17102, Chm.) Dinner at 6:30 p.m., American Legion, Old Berwick Road, Bloomsburg.
- 1954 — (William J. Jacobs, Tremont Annex Apts., 2 West Main St., Lansdale, Pa. 19446, Chm.) Get-together 6:00-7:00 p.m. (7:00—Dinner) at Bloomsburg Moose Club, W. Main St., Bloomsburg.
- 1959 — (William F. Swisher, Box 245, Cincinnatus, N.Y. 13040, Chm.) No special plans.
- 1964 — (Ernest R. Shuba, 1 Gaston Avenue, Raritan, N.J. 08869, Chm.) Get-together at 5:30 p.m. at Elks Club. Dinner and dance at 6:30 p.m., Main Ballroom, Elks Club.

CUT HERE

**LUNCHEON RESERVATION**

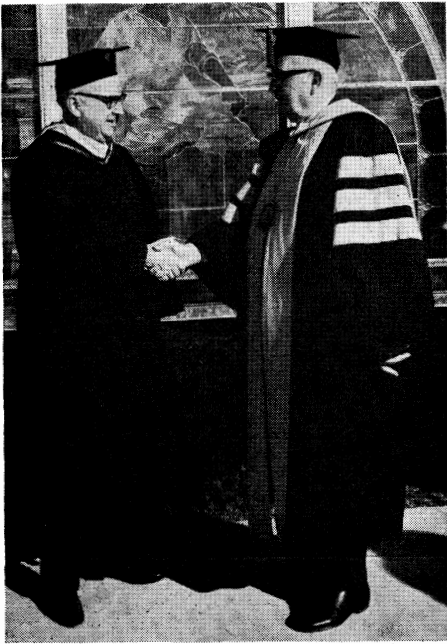
CUT HERE

IN ORDER TO PLAN for the preparation of food and the necessary table reservations, it is imperative that the Alumni Committee has an idea as to the number of Alumni who will be having lunch in the College Commons at 12:30 on Alumni Day.

Therefore, will you kindly clip this portion of the page and return it to MR. HOWARD FENSTEMAKER, President, Alumni Association, Bloomsburg State College by April 21, 1969.

PLEASE MAKE \_\_\_\_\_ RESERVATIONS FOR ME FOR SATURDAY'S LUNCHEON.

Name \_\_\_\_\_ Class \_\_\_\_\_



William A. Lank, (left) President of the Board of Trustees, is shown congratulating Dr. Harvey A. Andruss on his present and past accomplishments following the mid-January commencement exercises when Dr. Andruss announced his coming retirement after serving 30 years as President of Bloomsburg State College.

## From The President . . .

### YOUR OPPORTUNITY TO GIVE TO THE LOYALTY FUND

The goal of the Loyalty Fund seems to be stymied at the ten thousand dollar level.

It seems to me that with approximately thirteen thousand living Alumni that the amount should be greatly increased. No doubt, you read in Howard Fenstemaker's letter, the things that are being done by the Alumni Association of the College such as helping to sponsor an FM Radio Station, Radio Broadcasts for athletic contests, scholarships, and the like. However, we still have needs which the state is unwilling to subsidize.

Let us make an effort to exceed the goal of fifteen thousand dollars — so that we can say that we have increased Alumni support to go with a developing college, but most of all, come back to Bloomsburg for the Alumni weekend.

Sincerely yours,

HARVEY A. ANDRUSS, *President*

## CONSTRUCTION PROJECTS TOTAL \$27,000,000

By BOYD F. BUCKINGHAM, *Director of Development and Public Relations*

Increases in enrollment and in the number of faculty and the expansion of curriculum offerings have been accompanied by the planning and construction of new buildings and utilities on campus. Since 1966, we have completed a new library, a dormitory for 300 men, an auditorium, an extension of underground utilities, the Hartline Science Center, and a dormitory for 680 men.

Currently under construction are a dining hall-kitchen, a parking area for 215 cars, a dormitory for 400 women, a classroom building, a maintenance building, a gymnasium-fieldhouse, and an extension of utilities.

Bids are expected to be opened during the late summer or early fall for the construction of an athletic field and most of the underground utilities which will serve new buildings on the Upper Campus (formerly the Bloomsburg golf course).

Architects are currently working with college personnel to design a student center, an administration building, a multi-level parking area and roads, and recreation and additional parking areas.

In the fall of 1968, the Director of Development met for the first time with architects to begin pre-planning for the design of two men's dormitories, two women's dormitories, a dining-hall-kitchen, a classroom building, and a maintenance building. All but two of these will be located on the Upper Campus.

The total construction cost of these twenty-six projects is approximately \$27,000,000. In order to finish other projects planned for the upper campus, an additional amount of \$9,000,000 will be needed.

The cost of constructing dormitories is paid over a thirty year period by a special fee collected from each student for each week he lives in a dormitory. At the present time, when a student center is built on a state college campus, the students at that college must begin paying an additional fee of \$20 per year until the construction bonds are retired.

A committee of faculty and alumni has been appointed at Bloomsburg State College to suggest where trees, shrubs, and flowers should be located as various building projects are completed. It is hoped that their plans will help to restore the natural beauty of the campus.



Boyd F. Buckingham

## FOND MEMORIES

A recent news release, stating that Dr. Harvey A. Andruss, President of Bloomsburg State College, will retire during the latter part of this year, brought pleasant memories to Dr. Oliver S. Willham, retired president of Oklahoma State University, according to a recent article in the *Sunday Oklahoman*.

Dr. Willham and Dr. Andruss were graduated from high school together at Randlett, Cotton County, in the class of 1918. "There were four students in that class," the former OSU administrator recalls. Then, he added jokingly: "Fifty percent of the class became presidents of colleges." Three of the 1918 graduates were boys. The girl, Vera Elmore, died shortly after that in an automobile accident. The third boy was Edison Spanagel, now a Texas farmer.

A resident of Oklahoma since shortly before statehood, Dr. Willham is a native of Clearwater, Kansas, where he was born June 26, 1901. He moved with his parents to the "Big Pasture" country in February, 1907.

Dr. Andruss, a native of Texas, moved to Oklahoma Territory with his parents in 1903. He has been President of Bloomsburg State College for the past 30 years — one of the nation's longest tenures.

Do the three surviving members of that Randlett High School class of 51 years ago ever see each other? "Pretty regularly — at school reunions," says Dr. Willham. "We met last year at Randlett, after meeting for several years in Oklahoma City. Dr. Andruss and I have remained close friends throughout the many intervening years."

**RESERVATIONS** for overnight accommodations should be made directly with the **Magee Hotel**, Bloomsburg, Pa.; **Hummel's Motel**, Route 11, Bloomsburg, Pa.; **Riverview Motel**, R.D. 1, Berwick, Pa.; **Stone Castle Motel and Restaurant**, R.D. 2, Bloomsburg, Pa.; **Keller's Motel**, R.D. 4, Danville, Pa.; **Pine Barn Inn & Motel**, Danville, Pa.; **Reichard's Motel**, R.D. 4, Danville, Pa.; **Red Maple Motel**, R.D. 2, Berwick, Pa.; **Hotel Berwick**, Berwick, Pa.; **Tennytown Motel**, Berwick Highway, Bloomsburg, Pa.; **Briar Heights Motor Lodge**, Berwick-Bloomsburg Highway.



# . . . News Briefs . . .

For the third consecutive year, all three winter sports teams recorded a winning season. Wrestling posted a 11-3-1 record; basketball, 12-10; and swimming, 9-2-1.

Wrestling finished third in the Pennsylvania Conference and seventh in N.A.I.A. competition. Ron Russo at 137 lbs., Arnie Thompson at 152 lbs., and Jim McCue at hwt. were Pennsylvania State College champions and Russo won the N.A.I.A. title.

The swimming team finished third in the Pennsylvania Conference with Ralph Moerschbacher capturing a first place in both the 300 yard and 500 yard freestyle events.

The basketball team finished in a fourth place tie with Kutztown in the eastern division of the Pennsylvania Conference.

The four spring sports teams have been working out in preparation for the opening of the season in the early part of April. Baseball is coached by Roderick Clark Boler; track by Ronald Puhl; golf by Jerry Thomas; tennis by Burton Reese. Boler and Reese are new coaches this year.

Over 75 biologists from approximately 40 colleges and universities attended the Second East Central Pennsylvania College Biology Teachers Conference at Bloomsburg State College on Friday and Saturday, March 7 and 8. The theme of this year's meeting was "Biological Education: Its Relevance and Social Implications." Dr. Donald D. Rabb, chairman, Department of Biology at B.S.C., served as conference chairman.

The Maroon and Gold Concert Band participated in the Spring Arts Festival when it presented varied programs of symphonic band music on Thursday, March 13 in Haas Auditorium.

A series of four Spanish scholarly conferences are being conducted at Bloomsburg State College over a six week period. Noted Spanish professors representing the Pennsylvania State University, University of Cordoba, Scranton University, and Wilkes College are participating on the dates of March 8, 13, 19, and April 16.

Robert Goralski, NBC News Correspondent, was a guest speaker at a dinner given by President and Mrs. Harvey A. Andruss for faculty members, their wives and husbands, and Board of Trustees members and their wives in the College Commons on Saturday evening, March 15. Mr. Goralski spoke on the topic, "The Changing World and the Challenge to U.S. Leadership."

Miss Mary A. Tolan, a member of the faculty at Bloomsburg State College for the past year and a half, is Acting Dean of Women at the college while Miss Ellamae Jackson, Dean of Women, is on sabbatical leave during the second semester of the 1968-1969 college year.

The Association, one of the nation's top singing groups, appeared at Bloomsburg State College on March 12 under the auspices of the Big Name Entertainment Committee of the Community Government Association.

Two outstanding speakers, Dr. Paul Witty, Professor Emeritus, Northwestern University, and Dr. Russell Stauffer, Professor of Psychology and Director of the Reading Clinic, University of Delaware, delivered the addresses at the Fifth Annual Reading Conference held at Bloomsburg State College, Friday and Saturday, March 28 and 29. Dr. Margaret Sponseller served as conference chairman.

Clarence Gourley, Jr., a native of western Pennsylvania, joined the Bloomsburg State College faculty at the start of the second semester of the 1968-1969 college year as Assistant Director of Admissions.

Four hundred ninety-six (496) pints of blood were donated at the annual American Red Cross Bloodmobile on the campus of Bloomsburg State College on Thursday, March 13. This amount, donated chiefly by members of the college community, resulted in Bloomsburg remaining in Priority I status. George G. Stradtman has acted as faculty coordinator for a number of years.

Two official accreditation teams—the Middle States Association of Secondary Schools and Colleges visitation team and the National Commission for Accreditation Teacher Education visitation team—visited the Bloomsburg State College campus March 10-12 to reaffirm the accreditation for the undergraduate program in teacher education and to place initial accreditation on the graduate program in teacher education.

A news release was issued in January stating that due to limited housing facilities and increases in enrollment, Bloomsburg State College is requesting that new students, applying for admission for the first semester of the 1969-70 college year, commute from their own home if they live within a reasonable commuting distance of the college. (The college has established a 30 mile distance as a guideline for this request).

Two study abroad programs, the seventh annual European Culture Tour (June 30 to August 11), and the third annual summer study program, Bloomsburg in Spain (June 28 to September 4), will be conducted this year by the college.

The operation of the college and expenditures by students, faculty, and visitors will bring more than \$5,850,000 to Bloomsburg and the surrounding area during the present college year. This figure reflects an annual college payroll of approximately \$4,607,945 paid to faculty, non-instructional personnel, part-time students, college store and snack bar employees, Community Activities Office personnel, and the A.R.A. Slater School and College personnel. The remaining \$1,246,000 will be expended by students attending classes for the 48 week period, including the 12 weeks summer session.

Robert Van Waes of the national office of the American Association of University Professors, spoke on "Rights and Freedoms of Students" on January 29 in the College Commons at a joint meeting of the local chapter of the AAUP and the Bloomsburg State College Faculty Association.

## Seventeenth Letter To Alumni And Friends of Bloomsburg



Spring 1969

Published by  
THE OFFICE OF PUBLIC RELATIONS  
AND DEVELOPMENT  
BOYD F. BUCKINGHAM, Director  
BRUCE C. DIETTERICK, Information Specialist

NON-PROFIT ORG.  
U.S. POSTAGE  
PAID  
BLOOMSBURG, PA.  
PERMIT NO. 10