



Alumni Are Urged To Return Early On Alumni Day, Saturday, April 27

- 9:00 A.M. - 2:00 P.M. — Registration for all Alumni — Waller Hall.
 9:00 A.M. - 11:00 A.M. — Informal get-together for all Alumni and Faculty; Refreshments—Waller Hall Lobby.
 11:00 A.M. - 12:00 NOON— Informal Campus Tours.
 12:15 P.M. — Luncheon — College Commons — \$1.75 per person or Alumni Dues receipt. (Tickets will be available at registration desk or in Lobby or College Commons.)
 1:30 P.M. — Annual Meeting of Alumni Association — College Commons.
 *3:00 P.M. — Class Reunions.
 4:00 P.M. - 5:00 P.M. — Open House in Residence Halls.
 **5:00 P.M. — Social Hour and Dinners as scheduled by reunion classes.
 8:15 P.M. — Haas Auditorium — The Bloomsburg Players and the College Concert Choir will present a musical-dramatic performance of two operas, "The Devil and Daniel Webster" by Douglas Moore and "Trouble in Tahiti" by Leonard Bernstein. This is part of the Spring Arts Festival with no admission charge.

* All Classes to 1912 (incl.)— meet Saturday in Waller Hall Lobby

1913 — Friday—Faculty Lounge	1943 — Room 20, Science Hall
Saturday—East Hall Lounge	1948 — Room 4, Ben Franklin Bldg.
1918 — Commons Lobby	1953 — Room 25, Navy Hall
1923 — North Hall Lobby	1958 — Room 17, Ben Franklin Bldg.
1928 — South Hall Lobby	1963 — Room 2, Centennial Gymnasium
1933 — Room 7, Ben Franklin Bldg.	1964 to Present — Husky Lounge
1938 — West Hall Lounge	

FRIDAY EVENING, April 26, Class of 1918 (J. Claire Patterson, 315 West St., Bloomsburg, Chm.), 50th Reunion—guests of Alumni Assn. at a dinner in College Commons, 7:00 p.m.

Class of 1913 (Dr. Kimber C. Kuster, 140 W. 11th St., Bloomsburg, Chm.) will attend 50-Year Class (1918) dinner in College Commons, 7:00 p.m.

**Other Classes Have Made the Following Plans for Saturday, April 27:

- 1923 — (Mrs. Raymond P. Kashner, 125 Forest Rd., Sherwood Village, Bloomsburg, Chm.) Dinner, 6:00 p.m., Hotel Magee; Get-together, 8:00 p.m., home of Mrs. Kathryn Brace Laidecker, Corner Center & Fifth Sts., Bloomsburg.
 1928 — (Mrs. Ralph Dendler, 1132 Market St., Berwick, Chm.) Get-together, 5:00 p.m.; dinner at 6:00 p.m., New Ent's Restaurant, 117 W. Main St., Bloomsburg.
 1933 — (Miss Lois Lawson, 644 E. 3rd St., Bloomsburg, Chm.) Dinner, 6:00 p.m., Elks Club.
 1938 — (Paul G. Martin, 710 E. 3rd St., Bloomsburg, Chm.) Get-together and dinner, 6:00 p.m., Hotel Magee.
 1943 — (Edwin M. Vastine, R.D. 2, Bloomsburg, Chm.) Get-together, 6:00 p.m.; dinner, 7:00 p.m., Briar Heights Lodge.
 1948 — (Harry G. John, Jr., 425 Iron St., Bloomsburg, Chm.)
 1953 — (John S. Scrimgeour, 411 E. 3rd St., Bloomsburg, Chm.) Social Hour - Dinner at 5:00 p.m., Bloomsburg American Legion.
 1958 — (Raymond Hargreaves, 37 Dell Rd., Stanhope, N.J. 07874, Chm.) Dinner at 6:00 p.m., followed by dance, Briar Heights Lodge.
 1963 — (Mrs. Ronald Cranford, 248 N. Front St., Sunbury 17801, Chm.) Dinner at 6:30 p.m., followed by dance, Holiday Inn, Rts. 11 and 15, Shamokin Dam.

CUT HERE

CUT HERE

LUNCHEON RESERVATION

In order to plan for the preparation of food and the necessary table reservations, it is imperative that the Alumni Committee has an idea as to the number of alumni who will be having lunch in the College Commons at 12:15 p.m. on Alumni Day.

Therefore, will you kindly clip this portion of the page and return it to Mr. Howard Fenstermaker, President, Alumni Association, Bloomsburg State College by April 22, 1968.

PLEASE MAKE _____ RESERVATIONS FOR ME FOR SATURDAY'S LUNCHEON.

Name _____ Class _____

From the President's desk

Reduced State Appropriations and Increased Student Fees



DR. HARVEY A. ANDRUSS

Alumni should be interested in appropriations for their Alma Mater even though they are no longer students. The future expansion of a college and its development of new offerings depend upon appropriations made by the state and fees paid by the students.

Just now, the Trustees are expected to increase the basic fee paid by students by \$100.00 a year. This means that in September there will be a \$350.00 basic fee and a \$50.00 Community Activities fee, the total of which is the highest in the nation. Thus, the basic fee is being increased by 40%. Even with this increase it will be necessary to restrict the enrollment to a figure lower than 3,700 full-time students, the budget figure for September, 1968.

It is hoped that student aid in the forms of loans, scholarships, and employment on the campus or in the Town of Bloomsburg will be sufficient to enable students and their parents to bear this increased cost.

Sincerely yours,

HARVEY A. ANDRUSS, *President*

Dr. Andruss Presents Testimony To The Senate Appropriations Committee

Unless the appropriations provided in the Governor's General Fund Budget are increased or unless so-called tuition charges for students of State Colleges are increased, or both, the projected increases in enrollment of approximately 4,800 students for the thirteen State Colleges and Indiana University of Penna., for the 1968-1969 college year will not be possible, according to testimony presented February 28 to the Senate Appropriations Committee by Dr. Harvey A. Andruss, President of Bloomsburg State College. Dr. Andruss is chairman of the Committee on Legislation of the Board of Presidents of the Pennsylvania State Colleges.

Dr. Andruss noted that even though the law provides that the tuition of all students in State Colleges who are residents of Pennsylvania shall be paid by the Commonwealth in the form of appropriations, student fees have steadily increased over a period of years. Now, a recommendation has been made to raise the fees by \$100.00, a forty per cent increase, to meet the gap created by insufficient appropriations. The law currently provides that the Board of Trustees, with the approval of the Superintendent of Public Instruction, may levy and increase fees which, in addition, are necessary for the proper operation of the college. However, it becomes evident that the increase in fees from \$250 to \$350 can hardly be justified on the basis of this provision in the law.

Tuition is generally recognized as a payment made toward the cost of instruction.

The overall recommendation that the State-related universities and the State Colleges increase their tuition by \$100 does not recognize the fact that there is a legal requirement in the law for the State-owned colleges.

A survey of the presidents of the various colleges indicates the great majority of them are of the opinion that, if their appropriations have been reduced fifty per cent over the amount requested, it will be necessary to accept a smaller number of students in September, 1968 than was planned. Otherwise, classes will have to be larger and professors will have to teach more hours per week with the result that the quality of education will be affected.

President Andruss presented for consideration the following specific requests:

1. The proposed \$1,800,000 for the increase in salaries for faculties of State Colleges should be preceded by an upward revision of the salary schedule by at least two steps.
2. An additional appropriation of \$2,500,000 should be made to cover the cost of Social Security payments by the State for employees of State Colleges. This is the first year the colleges have had to take this amount from their budgets as it was previously paid through the budgets of the Department of Labor and Industry. In effect, this is not an increase in appropriations; it is merely a transfer from one department to another.
3. The "Reserve for Emergencies" of

\$500,000 should be continued as in the previous year inasmuch as it amounts to only one-half of the one percent of the total budget, which may reach \$100,000,000.

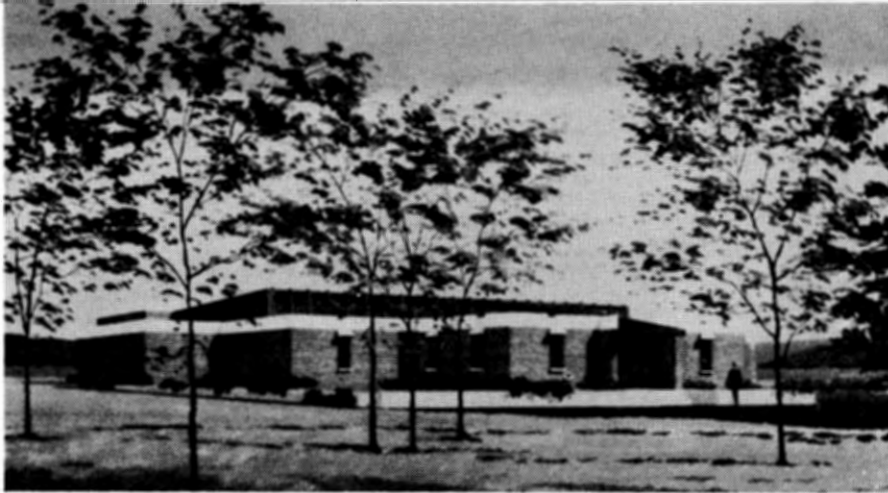
4. Immediate authorization should be given to hire faculty for the next year since students have already been admitted in large numbers on the basis that appropriations requested would be forthcoming.

While an increase of \$100 a year in so-called tuition would produce over \$5,000,000, based on a projected full-time undergraduate enrollment of 52,750 students, it was pointed out that Pennsylvania has one of the highest tuition rates in the nation for students in State Colleges. To the extent that fees are raised, some worthy students will not be able to bear the increased cost of attending college.

Dr. Andruss also called attention to the Governor's recommended complement for the 1968-1969 college year. He noted that a review of the requested complement positions and those recommended by the Governor indicates that the *instructional* requests of the institutions were reduced by 398 positions and the *non-instructional* requests were reduced by 420—a total requested complement reduction of 818. Approximately 25 per cent of this reduction was recommended in the Department of Public Instruction. In essence, this reduction included sufficient personnel to staff an additional State College.

RESERVATIONS for overnight accommodations should be made directly with the **Magee Hotel**, Bloomsburg, Pa.; **Hummel's Motel**, Route 11, Bloomsburg, Pa.; **Riverview Motel**, R.D. 1, Berwick, Pa.; **Stone Castle Motel and Restaurant**, R.D. 2, Bloomsburg, Pa.; **Keller's Motel**, R.D. 4, Danville, Pa.; **Pine Barn Inn & Motel**, Danville, Pa.; **Reichard's Motel**, R.D. 4, Danville, Pa.; **Red Maple Motel**, R.D. 2, Berwick, Pa.; **Hotel Berwick**, Berwick, Pa.; **Tennytown Motel**, Berwick Highway, Bloomsburg, Pa.; **Briar Heights Motor Lodge**, Berwick-Bloomsburg Highway.

\$14.5 Million in New Facilities in Progress at BSC



New Maintenance Building-Garage which is expected to be completed in 1969, at a cost of \$252,000.

by BOYD F. BUCKINGHAM, Director of Development

The completion of several new facilities during the past year has made possible the restoration of some of the natural beauty of the Lower Campus.

The unsightly trenches of the past year have disappeared, underground utilities for existing and future buildings have been installed, and grass, shrubbery and trees are now being planted. Since the underground utilities are complete, future buildings can be constructed without any appreciable damage to green areas.

Eleven projects are currently in either design or construction stages. Construction costs are estimated at \$14,500,000. These are part of the facilities Bloomsburg will need to accommodate an enrollment of 6,000 students by 1975.

A dormitory for 672 men (across Second Street from Waller Hall) and a science-classroom building (adjacent to Sutliff Hall) are scheduled for completion and occupancy during 1968 at a cost of \$4,540,570.

Architects have completed design work for a dining hall and kitchen, a parking area, a nine story residence hall for 400 women, a classroom building, a gymnasium-

fieldhouse, and a maintenance building-garage. Bids are expected to be received for these six projects during the spring and summer of 1968. Construction costs are estimated at \$7,122,000. It is hoped that all will be completed by September, 1969 or shortly thereafter.

Progress is being made in the design of the athletic field and an extension of utilities for the Upper Campus. Architects are ready to resume the planning and design of the student center. These projects, totalling \$3,045,000 complete the \$14.5 million in some stage of design or construction.

Funds for three additional projects are expected to become available when the General Assembly of Pennsylvania approves Senate Bill 1213. The latter bill provides \$2,550,000 for the design and construction of an administration-supply building, land purchases, and the construction of parking areas, roads, recreation areas, and utilities.

Long range planning indicates the need for another sixteen buildings totalling \$20,400,000 between 1969 and 1975, to complete campus planning for an anticipated enrollment of 6,000.

Heads BSC Football



JERRY DENSTORFF

Jerry Denstorff, assistant football coach at Morehead (Kentucky) State University, was named head football coach at Bloomsburg State College by Dr. Harvey A. Andruss, president, early this year.

Denstorff assumed his duties at the start of the second semester, January 29. He succeeds Russ Houk, football coach for the past four years, who had asked to be replaced because of his duties as wrestling coach and director of athletics. Houk, in his four years, posted 16 victories against 16 losses, and one tie. The new football coach will conduct spring football practice for approximately one month in order to evaluate the material for next year's football campaign.

A native of Danville, Illinois, Denstorff matriculated at Louisiana State University and completed his Bachelor's degree with a major in physical education at Evansville University. His Master's degree was earned at Indiana University and he has taken additional graduate study at Morehead.

From 1960 to 1963 he served as head football coach at Mitchell High School, Mitchell, Ind., and for the past four years has been a member of the faculty and assistant football coach at Morehead.

Following an outstanding career of high school football, Denstorff was awarded a football scholarship to Louisiana State University where he played for three years. Transferring to Evansville University for his senior year, he was team captain and was selected to the All-Indiana Collegiate football team as a guard. In his third year of coaching at Mitchell High School, his team lost only one game and the following year was undefeated and unscored upon in conference competition. As a result of his fine accomplishments, he was voted Southern Indiana Coach of the Year by the Louisville Courier Journal.

Coach Denstorff is a member of the American Football Coaches Association. He is married to the former Joan Moss, Fort Worth, Texas, and has two sons, Russ, five and Rick, four.



Mr. Elton Hunsinger, Dean of Men at BSC, represented the Senate Education Committee in the capacity of senate education advisor at the public hearings recently held in seven areas. Hunsinger works with Senator Preston B. Davis who is Chairman of the Senate Education Committee.



Shown above is a scene at the height of the activity at the Mock Republican National Convention held in Centennial Gymnasium, Saturday, March 16. In addition to B.S.C., eleven other northeastern Pennsylvania colleges and universities were represented by delegates. The Honorable Gerald R. Ford, minority leader of the House of Representatives, was the featured speaker. The so-called "Dream Ticket" of Rockefeller-Reagan won the nomination.

... NEWS BRIEFS ...

Bloomsburg State College will again offer three sessions during the summer of 1968 according to Robert L. Bunge, Registrar. In addition to courses offered during the day a limited number of evening courses are scheduled.

The pre-session will begin on Monday, June 10 and extend through Friday, June 28. Class periods during the day will be held from 8:00-9:30 a.m. and from 10:30-12 noon. Evening classes for the pre-session will be conducted from 7:00-8:30 p.m. and from 9:00-10:30 p.m.

The main session from Monday, July 1, to Friday, August 9 will have three class periods from 8:00-9:30 a.m., 9:40-11:10 a.m., and from 11:20 a.m. to 12:50 p.m. Evening classes for the main session will be from 7:00-8:30 p.m., from 8:00-9:30 p.m., and from 9:00-10:30 p.m.

The post-session will be held from Monday, August 12 and continue through Friday, August 30 and will have the same class periods as those of the pre-session.

The majority of the above courses will be three credit hours. A selected number of workshops, seminars, study tours, and special programs will be featured in the undergraduate course offerings; the majority of these will be for six credit hours. The complete summer sessions bulletin should be available in the Registrar's office after April 2.

◆ ◆ ◆

The 1967-1968 academic year has seen the establishment of three new Master of Education degree programs. Foreign language study with a major in French, German, or Spanish was started in September. The Speech faculty will be offering a Master of Education degree in either general speech or theatre. Those interested in Reading programs will be pleased to know of a new degree program of study in that field. The new certification requirements just issued by the Department of Public Instruction will also be satisfied by this degree program.

Previously established degree programs are still operating with an ever increasing enrollment. They are: biology, business education, elementary education, English, history, social studies with an emphasis in geography, political science, or history, and special education.

For information about any of these programs, contact Dr. Charles Carlson, Acting Director of Graduate Studies, Bloomsburg State College.

◆ ◆ ◆

In summarizing new admissions expected for September, 1968, John L. Walker, Director of Admissions, stated that to date 6,800 applications have been distributed with 2,900 application procedures initiated. From this number, a freshman class of approximately 800 students will be selected. This is the maximum number of new students that can be accepted due to classroom space, dormitory space, and dining facilities. As a result of these campus restrictions, applications for prospective resident women were not sent out after February 5, 1968. A total undergraduate enrollment of approximately 3400 students is expected for the first semester of the 1968-69 college year.

◆ ◆ ◆

The appointment of John J. Trathen, a recent graduate of Bloomsburg State College, as Assistant Comptroller of Community Activities was recently announced by Dr. Harvey A. Andruss. A native of Hazleton, Trathen received his Bachelor of Science degree in business education with a major in accounting in January, 1968; he was graduated cum laude. In his new capacity, Trathen will work under the direction of W. Horace Williams, Comptroller of Community Activities.

◆ ◆ ◆

The United States Office of Education has awarded the Division of Special Education at Bloomsburg State College two grants totaling \$44,800. Of this total, \$34,200 will provide two graduate fellowships and 12 undergraduate traineeships for the preparation of teachers for the mentally retarded. The balance of \$10,600 will provide two graduate fellowships for the preparation of teachers for speech correction. Additional information on these grants and graduate assistantships can be obtained from Dr. William L. Jones, Director of the Division of Special Education, Bloomsburg State College.

◆ ◆ ◆

The annual education meeting sponsored by the Pennsylvania Business Association was held at Bloomsburg State College on Satur-

day, April 6. The theme of the conference was "Business Education in the Technological Age." The featured speaker at the luncheon on Saturday was Dr. W. Deming Lewis, President of Lehigh University.

◆ ◆ ◆

Two outstanding speakers, Dr. Roy A. Kress, Professor of Psychology and Director of the Reading Clinic, Temple University, and Dr. Murray C. Austin, Professor of Education, Western Reserve University, will deliver the featured addresses at the Fourth Annual Reading Conference to be held on the BSC campus Friday and Saturday, April 19-20. Dr. Margaret Sponseller, Professor of Education, is serving as conference coordinator.

◆ ◆ ◆

The wrestling, basketball, and swimming teams have all just completed winning seasons.

Russ Houk's Grapplers posted 8 victories against four losses and one tie. They tied for sixth place in the Wilkes Open Wrestling Tournament, finished third in the Pennsylvania State College Tournament, and fifth in the NAIA competition. Houk's overall record stands at 108 victories, 18 losses, and three ties.

The best swimming team, since the sport was inaugurated at BSC in 1959 finished with a 9-2 record, winning the last eight dual meets. Coach Eli McLaughlin's tankmen came within a whisker of winning the Pennsylvania State College swimming and diving championships held at East Stroudsburg S. C. The Rams edged Bloomsburg out in the final event winning the championship with 90½ points to Bloomsburg's 86 points.

The basketball team's 13-7 record was a game better than a year ago. Coach Earl Voss, in his second year, had a well balanced team, but the Huskies failed to win one out of the last two games which would have earned BSC a playoff berth in District 19 NAIA competition.

All three of the above sports will have the majority of the members of the squads returning next year. This factor plus a number of outstanding freshmen athletes, results in a bright future for the BSC winter sporting program during the 1968-69 college year.

Fifteenth Letter To Alumni And Friends of Bloomsburg



Spring 1968

Published by
THE OFFICE OF PUBLIC RELATIONS
AND DEVELOPMENT
BOYD F. BUCKINGHAM, Director
BRUCE C. DIETTERICK, Information Specialist

NON-PROFIT ORG.
U.S. POSTAGE
PAID
BLOOMSBURG, PA.
PERMIT NO. 10