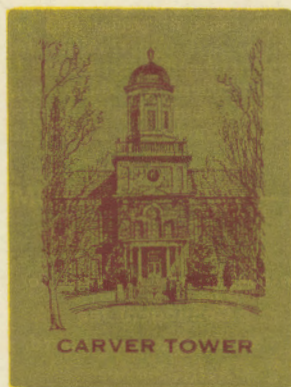
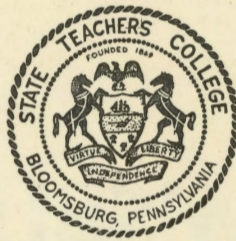


THE BLOOMSBURG STORY

. . IN PICTURES



**STATE TEACHERS COLLEGE
BLOOMSBURG, PENNSYLVANIA**



Administrative Personnel

Harvey A. Andruss	President
Mrs. Anna M. Knight	Secretary to President
Thomas P. North	Dean of Instruction
Marguerite W. Kehr	Dean of Women
Ethel A. Ranson	Assistant Dean of Women
Mary E. Macdonald	Assistant Dean of Women
John A. Hoch	Dean of Men
Robert B. Redman	Assistant Dean of Men
Ralph S. Herre	Assistant Dean of Men
Edna J. Hazen	Director of Elementary Education
Richard G. Hallisy	Director of Business Education
M. Beatrice Mettler	Graduate Nurse
Mrs. Rebekah Hufcut	Dietitian
Paul G. Martin	Business Manager
Edward Sharretts	Superintendent of Grounds and Buildings

The Board of Trustees

Reg. S. Hemingway	President	Bloomsburg
Fred W. Diehl	Vice President	Danville
Mrs. Elsie Yorks Jones	Secretary	Bloomsburg
Earl V. Wise		Berwick
George L. Weer		Kingston
Howard S. Fernsler		Pottsville
Charles D. Steiner		Shamokin
C. Wm. Kreisher		Catawissa
Victor Diehm		Hazleton
Harvey A. Andruss	President of the College	
Francis B. Haas, <i>ex-officio</i>	Superintendent of Public Instruction	





Waller Hall—Administrative Offices and Women's Dormitory

North Hall—Men's Dormitory





Class Memorial—1912



Front Campus

Benjamin Franklin Laboratory School

Centennial Gym





Individual Instruction



Chem Lab

Speech Clinic





Zoology Laboratory

Student Publications

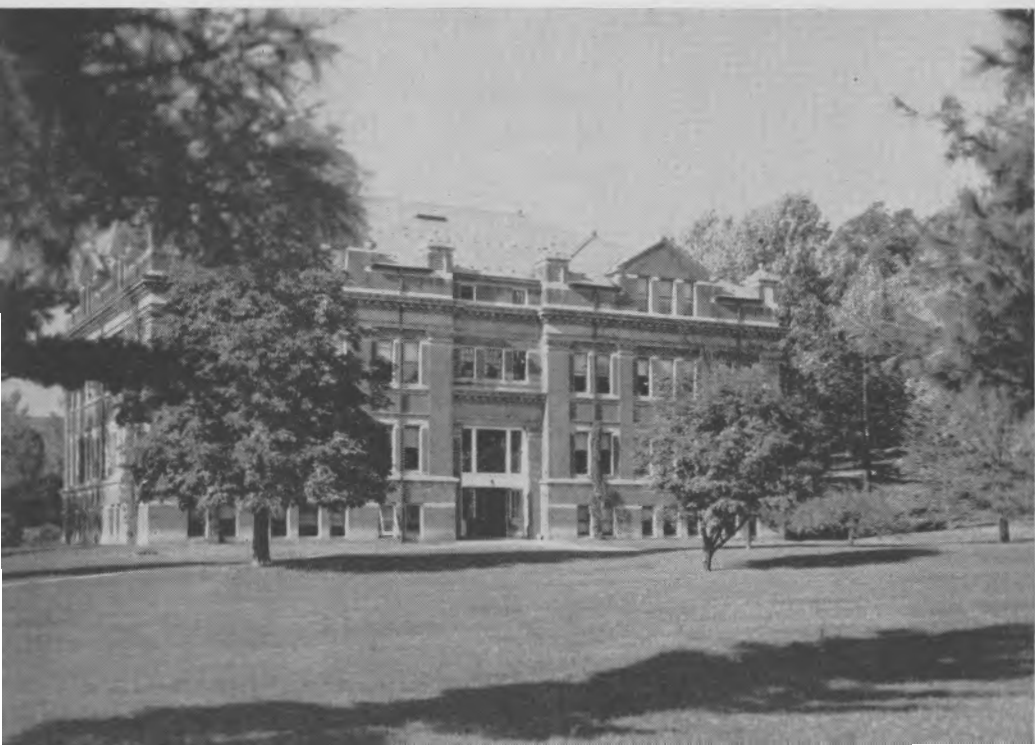




Library Reading Room

Science Hall

"School Days" →





BLOOMSBURG and YOU

Thousands of young people graduating from high school this year are faced with the problem, "What shall I choose as my life's work."

What of teaching?

If you like boys and girls, have a pleasing personality, and are interested in a life of service, it is probable that with training you can become a successful teacher.

America needs teachers. The crisis is particularly acute in the elementary field where record enrollments are anticipated during the next decade. A study recently completed by the National Commission on Teacher Education reveals that more than one million new elementary school teachers and nearly 250,000 new secondary teachers will be needed before 1960.

Here is opportunity. Here is job security. *Here is a profession.*

While it is the hope of Bloomsburg State Teachers College that you attend some institution somewhere for your own sake and for the sake of the future welfare of the nation, we feel that Bloomsburg has many advantages which cannot be found in all colleges.

People who are well-dressed select their clothes with care — clothes that fit well and bring out their personality; clothes that accentuate their best features and enhance their personality. In the same manner and with the same care you should select your college.

Bloomsburg makes an effort to tailor the education to the needs of the individual. At Bloomsburg, teachers are more interested in teaching students than in

research; have time to talk with and counsel students, correct study habits, prevent failure—if possible—before it is too late; place emphasis upon the areas in which the student is weakest rather than in cutting the cloth by a standard pattern which may or may not fit the individual. It is this fact, plus the College's emphasis on the living aspects of education, that is responsible for Bloomsburg's outstanding record as measured by the success of its graduates.

Bloomsburg State Teachers College is owned and operated by the Commonwealth of Pennsylvania, but it is not entirely supported by taxpayers. Over a period of years, the state has assumed one-half the burden of the costs of maintenance, operation, and instruction, while the students bear the remainder. In effect, this means that every student attending a teachers college receives a scholarship from the state. This "gift" amounts to about \$300 a year for each student. Over a four-year period, the state is contributing \$1200 to the education of each state teachers college graduate.

Bloomsburg is a community organized for living and learning. It provides a beautiful campus, comfortable dormitories, a pleasant dining room, and excellent recreational facilities. Bloomsburg also provides a well-rounded program of health instruction and physical activities; a modern gymnasium with a beautiful swimming pool; tennis courts and playing fields. More important than all these advantages is the friendly, personal atmosphere that pervades the campus — a feeling that is impossible to find in colleges of more than a thousand students.

Bloomsburg, known throughout the Central Pennsylvania area as the "Friendly College," has long been noted for the congenial atmosphere on its campus where the "Hello" spirit among both students and faculty is traditional.

Bloomsburg, like other teachers colleges in Pennsylvania, offers curriculums for teaching elementary and secondary academic subjects, such as English, Science, Mathematics, Languages, etc. In addition, Bloomsburg offers educational opportunities for prospective teachers of business and retail selling. It also trains teachers in the fields of special education, speech correction, and kindergarten.

The first two years at Bloomsburg are devoted to *general* or *liberal* education in that only one course bears any direct relation to teaching as a career. Beginning in the second year, a tentative choice of the field of concentration must be made so that electives or choices may be followed in order that, in addition to general knowledge of many things, a specific preparation may be made for the fields in which *you* intend to teach.

In the Senior year, student teaching, either in our own laboratory school or in the schools of towns located near the college, provides an ample opportunity for the student to observe, aid, and participate in the actual teaching process.

The social life at Bloomsburg is well organized, and while some activities originate in various fraternity or dormitory groups, there are all-college dances and many other special events open to all members of the student body. The finest concert and dramatic artists are brought to students, either on the college campus, or in connection with the Bloomsburg Civic Music Association. Record concerts, forums, discussions, field trips, professional meetings, outstanding speakers, all serve to supplement the more serious work of the classroom.

Bloomsburg is one of the pioneers in student participation in college government. The Community Government Association is composed of all students and faculty members of the college; and the governing board, the College Council,

initiates policies under which all campus organizations and extracurricular activities are organized and conducted.

But any young person who is thinking about going into teaching has a right to know something of the placement record of the college which he expects to attend in preparing for that profession. Bloomsburg offers its graduates intelligent, personalized placement service which attempts to find the right position for each individual. The placement office keeps its candidates informed on matters of supply and demand. It also works diligently to secure for them the best position and highest salary their qualifications merit.

Through a series of surveys made at regular intervals during the last twenty years, it was found that more than 85 percent of Bloomsburg graduates have taught in regular teaching positions and over 12 percent are gainfully employed in other occupations. This record speaks for itself.

Bloomsburg meets the highest standards as a college. It is on the approved list of the Middle States Association of Colleges and Secondary Schools and the American Association of Colleges for Teacher Education. Its department of Business Education is accredited by the National Association of Business Teacher Training Institutions.

The question of the right college for you cannot be answered specifically. Certainly, Bloomsburg is not the *only* place where you can get a good education. It may not even be the *best* place for any one particular student. The chief factor in successful formal education is the *student himself*. Some students will do better work in one environment than in another; others will not do as well.

Bloomsburg is interested in selecting for admission those students who can best take advantage of the many opportunities Bloomsburg has to offer. If you have a sound mental and moral background, possess emotional stability, and the kind of personality that can develop in a friendly college atmosphere, Bloomsburg is the college for you!



Reading Can Be Fun

Special Education for Mentally Retarded





Field Trip to the Dairy

Rhythmic Activities





Retail Selling

Office Machines Practice





Fashion Show—1890 Model

Typewriting Class

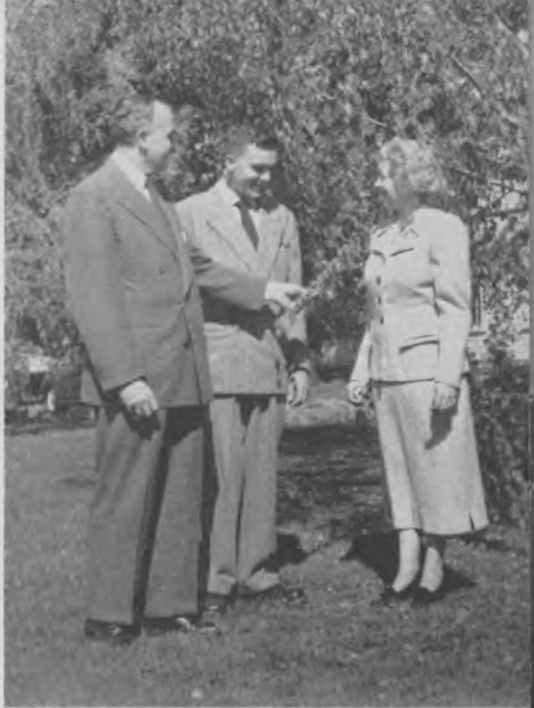


Office Machines Show





Men's Glee Club



Presidential Candid

Attractive Living Quarters

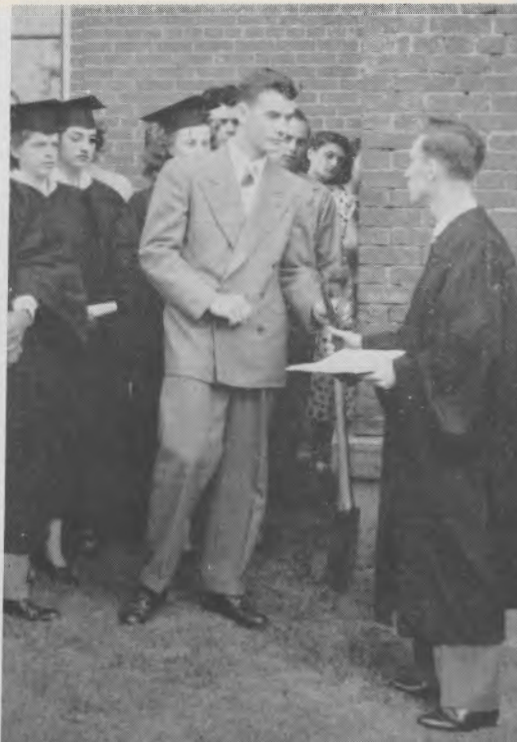


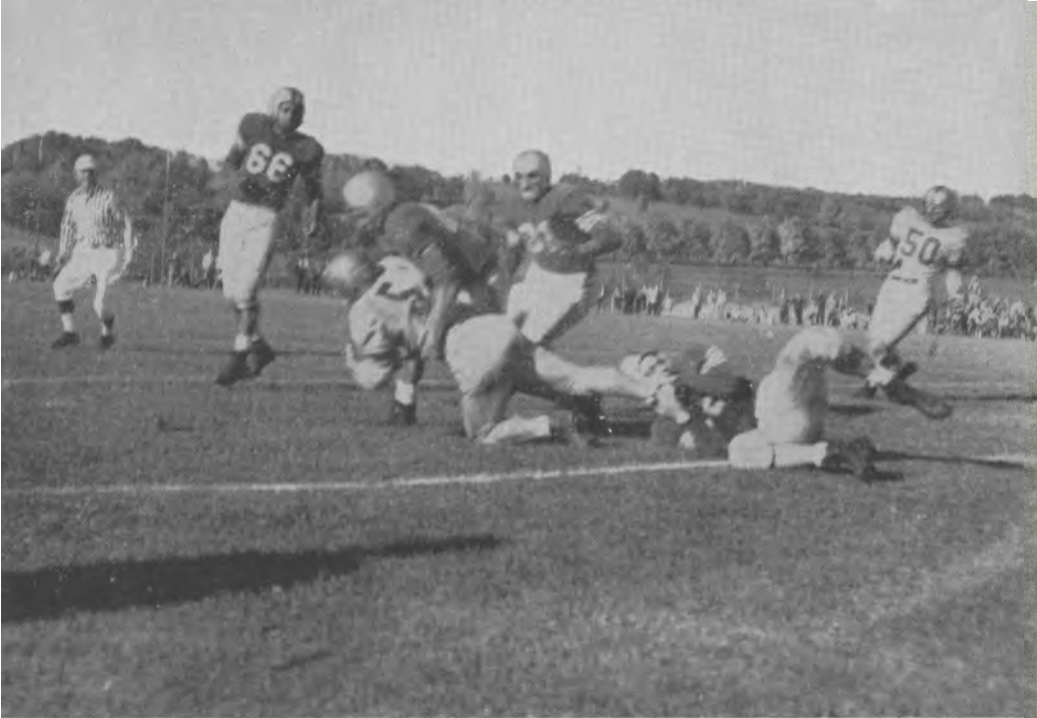


A Friendly Game

Modern Swimming Pool

Senior Ivy Day

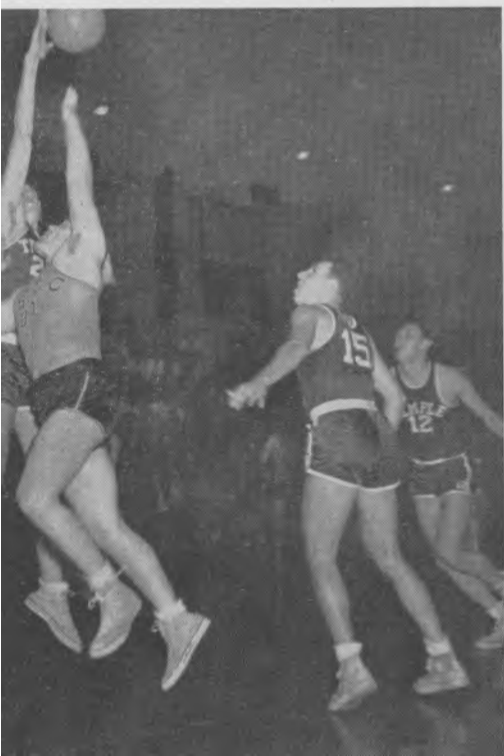


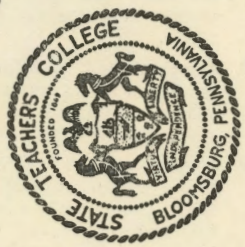
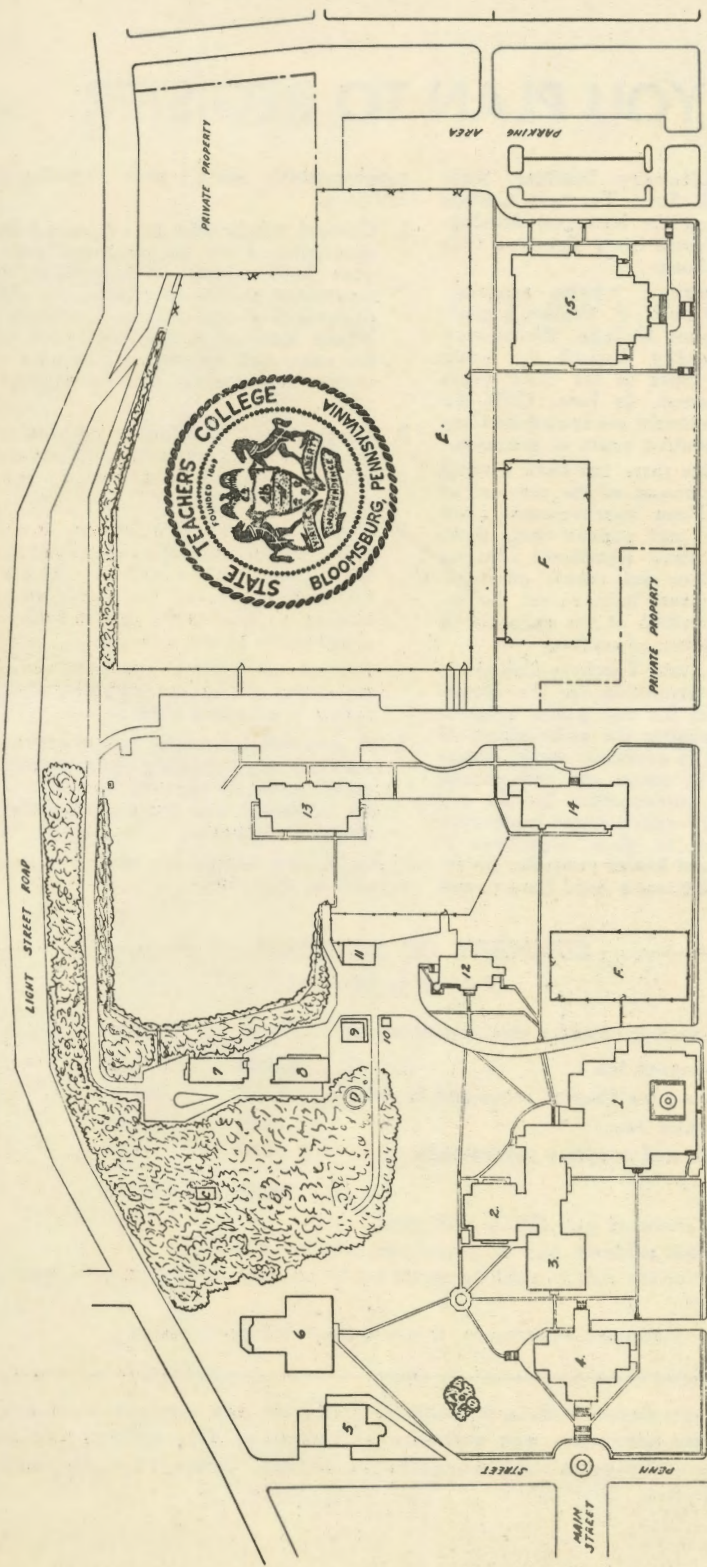


State Teachers College Champions—1951

Varsity Basketball

Batter-up!





- | | | | | | |
|---|---|--|--|---|--|
| <p>PRIVATE PROPERTY</p> <p>WINNANTON AVE</p> <p>PARKING</p> <p>WOOD STREET</p> <p>PARKING</p> <p>SPRUCE STREET</p> <p>EAST STREET</p> | <p>PRIVATE PROPERTY</p> <p>1. WALLER HALL
2. RECREATION CENTER
3. MEETING HALL
4. CARVER HALL</p> | <p>PRIVATE PROPERTY</p> <p>5. HEATING PLANT
6. SCIENCE HALL
7. LAUNDRY
8. SHOP & STORAGE</p> | <p>PRIVATE PROPERTY</p> <p>9. COLLEGE RESIDENCE
10. GREEN HOUSE
11. STORAGE
12. NORTH HALL</p> | <p>PRIVATE PROPERTY</p> <p>13. NAVY HALL
14. BENJAMIN FRANKLIN LABORATORY SCHOOL
15. CENTENNIAL GYMNASIUM</p> | <p>PRIVATE PROPERTY</p> <p>A. FLAG POLE
B. GROVE
C. PERGOLA
D. LAGOON
E. ATHLETIC FIELD
F. TENNIS COURTS</p> |
|---|---|--|--|---|--|

LIGHT STREET ROAD

EAST SECOND STREET

MAIN STREET

PENN STREET

CHESTNUT STREET

IF YOU PLAN TO REGISTER

Academy, Literary Institute, State Normal School, State Teachers College—such has been the historical development of the present State Teachers College at Bloomsburg.

Beginning with a private academy, opened in 1839 by C. P. Waller, a graduate of Williams College, Bloomsburg has grown steadily through the years despite trying times in the early years of its development. In June, 1939, the College very fittingly celebrated its Centennial—one hundred years of progress.

Since that time there has been a rapid growth and extension of the services of the College. Plant improvements have been extensive, and parallel with these changes have come significant changes in the curriculum and course offerings. These developments have raised the institution to a position of pre-eminence in the field of teacher education.

Bloomsburg State Teachers College is a professional institution for the education of teachers for our public schools. The College requires the maintenance of high standards in academic work, balanced programs of social and recreational activities, and opportunities for the development of self-direction and leadership. The attainment of these objectives is aided by a sound health program, favorable study conditions, a good library, and

supplementary social and recreational activities.

1. General scholarship as evidenced by graduation from an approved four-year high school or institution of equivalent rank and ranking in the upper-half of the class at graduation. Those students in the lower-half of the class will be required to pass a written entrance examination satisfactorily.
2. Integrity and appropriate personality as shown by an estimate of secondary school officials of the candidate's personal qualifications.
3. Health, physical vigor, emotional stability, and absence of physical defects that would interfere with the successful performance of the duties of a teacher as determined by a medical examination at the college.
4. Normal intelligence and satisfactory command of English as evidenced by rating in standard tests.
5. A personal interview with particular attention to personality, speech habits, social presence, expressed interests of the applicant, and promise of professional development.

Application blanks are available upon request to the college.

SUMMARY OF EXPENSES

(Subject to Change)

The cost of one semester for students living at	Home	College
Contingent fee	\$45.00	\$ 45.00
Housing fee (board, room and laundry)	none	180.00*
Activities fee	15.00	15.00
Books and supplies (estimated)	30.00	30.00
	<hr/>	<hr/>
	\$90.00	\$270.00

Business students pay \$12.00 additional.

Out-of-State students pay \$7.50 per semester hour credit.

A deposit of ten dollars shall be made by all students who wish to register at the college.

* Will probably be increased proportionately if cost of living continues to increase.

A general information bulletin is available giving the new curriculum patterns, requirements for admission, and summary of expenses. This bulletin will be mailed to interested persons upon request to the College. Catalogs are also available for distribution.